

CALENDAR 1955
Eighteenth Issue



With Greetings from

Stevenson's Dairy Farms, Cumnock

**PRODUCERS AND DISTRIBUTORS
OF GOOD MILK**



alendar 1955

In presenting the Eighteenth Issue of our Calendar, may we again express our thanks for your continued custom. Milk is probably the most important item in the family diet and, as your suppliers, we do appreciate the trust you place in us. Our constant endeavour to be worthy of that trust is shared by a loyal and enthusiastic Staff and we readily acknowledge their co-operation in our efforts to provide you with a first-class service. Once more we join with them in wishing you and your family Good Health, Happiness and Prosperity in the coming year.

J. J. & W. Stevenson



A JANWAR DAY—MAUCHLINE.

*Thou was a noble fittie-lan',
 As e'er in tug or tow was drawn!
 Aft thee an' I, in aught hours' gaun,
 On guid March-weather,
 Hae turn'd sax rood beside oor han',
 For days thegither.*

ROBERT BURNS.

JANUARY, 1955

Full Moon 8th
 New Moon 24th

<i>Sunday</i>	-	2	9	16	23	30
<i>Monday</i>	-	3	10	17	24	31
<i>Tuesday</i>	-	4	11	18	25	.
<i>Wednesday</i>		5	12	19	26	.
<i>Thursday</i>	-	6	13	20	27	.
<i>Friday</i>	-	7	14	21	28	.
<i>Saturday</i>	1	8	15	22	29	.

Stevenson's
 Dairy Farms
 Cumnock.

Telephone: 3255-6



WHAT NEXT?—A.J.M.S.

*Sweet babe, in thy face
Soft desires I can trace
Secret joys and secret smiles,
Little pretty infant wiles.*

WILLIAM BLAKE.

*Stevenson's Dairy Farms
Cumnock.*

Telephone: 3255-6

FEBRUARY, 1955

Full Moon 7th
New Moon 22nd

<i>Sunday</i>	- .	6	13	20	27
<i>Monday</i>	- .	7	14	21	28
<i>Tuesday</i>	- 1	8	15	22	.
<i>Wednesday</i>	2	9	16	23	.
<i>Thursday</i>	- 3	10	17	24	.
<i>Friday</i>	- 4	11	18	25	.
<i>Saturday</i>	- 5	12	19	26	.



OLD CHURCH
AND
MERCAT CROSS,
CUMNOCK.

*O sweeter than the marriage feast,
'Tis sweeter far to me,
To walk together to the kirk
With a goodly company!*

S. T. COLERIDGE.

*Stevenson's Dairy Farms
Cumnock.*

Telephone: 3255-6

MARCH, 1955

Full Moon 8th
New Moon 24th

<i>Sunday</i>	- .	6	13	20	27
<i>Monday</i>	- .	7	14	21	28
<i>Tuesday</i>	- 1	8	15	22	29
<i>Wednesday</i>	2	9	16	23	30
<i>Thursday</i>	- 3	10	17	24	31
<i>Friday</i>	- 4	11	18	25	.
<i>Saturday</i>	- 5	12	19	26	.



SPRINGTIME, NEWFIELD.

Abroad in the meadows to see the young lambs
 Run sporting about by the side of their dams
 With fleeces so clean and so white.

ISAAC WATTS.

Stevenson's Dairy Farms
 Cumnock.

Telephone: 3255-6

		APRIL, 1955				Full Moon 7th	New Moon 22nd
<i>Sunday</i>	- .	3	10	17	24		
<i>Monday</i>	- .	4	11	18	25		
<i>Tuesday</i>	- .	5	12	19	26		
<i>Wednesday</i>	. 1	6	13	20	27		
<i>Thursday</i>	- .	7	14	21	28		
<i>Friday</i>	- 1	8	15	22	29		
<i>Saturday</i>	- 2	9	16	23	30		



AT NEW CUMNOCK SHOW.

Animals are such agreeable friends—they ask no questions, they pass no criticisms.

GEORGE ELIOT.

Stevenson's Dairy Farms
Cumnock.

Telephone: 3255-6

MAY, 1955

Full Moon 6th
New Moon 21st

<i>Sunday</i>	-	1	8	15	22	29
<i>Monday</i>	-	2	9	16	23	30
<i>Tuesday</i>	-	3	10	17	24	31
<i>Wednesday</i>		4	11	18	25	.
<i>Thursday</i>	-	5	12	19	26	.
<i>Friday</i>	-	6	13	20	27	.
<i>Saturday</i>	-	7	14	21	28	.



OCHILTREE MILL.

*He gives the creaking wheel a spin,
The circling millstones faster flee,
The shuddering timbers groan within
And down the shoot the meal runs free.*

ROBERT BRIDGES.

JUNE, 1955

Full Moon 5th
New Moon 20th

<i>Sunday</i>	- .	5	12	19	26
<i>Monday</i>	- .	6	13	20	27
<i>Tuesday</i>	- .	7	14	21	28
<i>Wednesday</i>	1	8	15	22	29
<i>Thursday</i>	- 2	9	16	23	30
<i>Friday</i>	- 3	10	17	24	.
<i>Saturday</i>	- 4	11	18	25	.

Stevenson's Dairy Farms
Cumnock.

Telephone: 3255-6



CLIPPING AT PRIESTHILL, MUIRKIRK.

*I never needit tar nor keel
 To mark her upo' hip or heel;
 Her crookit hornie did as weel
 To ken her by amang them a'.*

JOHN SKINNER.

Stevenson's Dairy Farms
 Cumnock.

Telephone: 3255-6

JULY, 1955

Full Moon 5th
 New Moon 19th

<i>Sunday</i>	-	3	10	17	24	31
<i>Monday</i>	-	4	11	18	25	.
<i>Tuesday</i>	-	5	12	19	26	.
<i>Wednesday</i>		6	13	20	27	.
<i>Thursday</i>	-	7	14	21	28	.
<i>Friday</i>	1	8	15	22	29	.
<i>Saturday</i>	2	9	16	23	30	.



HAIRST TIME AT "MAINS," OCHILTREE.

*Peace to the husbandman and a' his tribe
Whase care fills a' our wants frae year to year.
Lang may his sock and couter turn the glebe
And bank o' corn bend down wi' laded ear.*

ROBT. FERGUSSON.

Stevenson's Dairy Farms
Cumnock.

Telephone: 3255-6

AUGUST, 1955

Full Moon 3rd
New Moon 17th

<i>Sunday</i>	-	7	14	21	28	
<i>Monday</i>	-	1	8	15	22	29
<i>Tuesday</i>	-	2	9	16	23	30
<i>Wednesday</i>		3	10	17	24	31
<i>Thursday</i>	-	4	11	18	25	.
<i>Friday</i>	-	5	12	19	26	.
<i>Saturday</i>	-	6	13	20	27	.



PART OF THE CHANGUE HERD.

*The friendly cow all red and white,
I love with all my heart;
She gives me cream with all her might
To eat with apple-tart.*

R. L. STEVENSON.

*Stevenson's Dairy Farms
Cumnoek.*

Telephone: 3255-6

SEPTEMBER, 1955 Full Moon 2nd
New Moon 16th

<i>Sunday</i>	- .	4	11	18	25
<i>Monday</i>	- .	5	12	19	26
<i>Tuesday</i>	- .	6	13	20	27
<i>Wednesday</i>	. .	7	14	21	28
<i>Thursday</i>	- 1	8	15	22	29
<i>Friday</i>	- 2	9	16	23	30
<i>Saturday</i>	- 3	10	17	24	.



KNOCKBURNIE, NEW CUMNOCK.

*What would become of the rivers royal
If the little streams went dry?*

HILTON BROWN.

*Stevenson's Dairy Farms
Cumnock.*

Telephone: 3255-6

OCTOBER, 1955

Full Moon 1st
New Moon 15th
Full Moon 31st

<i>Sunday</i>	-	2	9	16	23	30
<i>Monday</i>	-	3	10	17	24	31
<i>Tuesday</i>	-	4	11	18	25	.
<i>Wednesday</i>		5	12	19	26	.
<i>Thursday</i>	-	6	13	20	27	.
<i>Friday</i>	-	7	14	21	28	.
<i>Saturday</i>	1	8	15	22	29	.



HUNTER MURRAY WITH BET, BEN AND REX.

*In summer's heat, and winter's cold,
He fed his flock and penn'd the fold.*
JOHN GAY.

Stevenson's Dairy Farms
Cumnock.

Telephone: 3255-6

NOVEMBER, 1955 New Moon 14th
Full Moon 29th

<i>Sunday</i>	- .	6	13	20	27
<i>Monday</i>	- .	7	14	21	28
<i>Tuesday</i>	- 1	8	15	22	29
<i>Wednesday</i>	2	9	16	23	30
<i>Thursday</i>	- 3	10	17	24	.
<i>Friday</i>	- 4	11	18	25	.
<i>Saturday</i>	- 5	12	19	26	.



ON THE AYR ROAD, EAST TARELGIN.

*"Earths gone to bed and yet we know
Life sleeps that it may stronger grow
Beneath the blanket of the snow."*

*Stevenson's Dairy Farms
Cumnock.*

Telephone: 3255-6

DECEMBER, 1955 New Moon 14th
Full Moon 29th

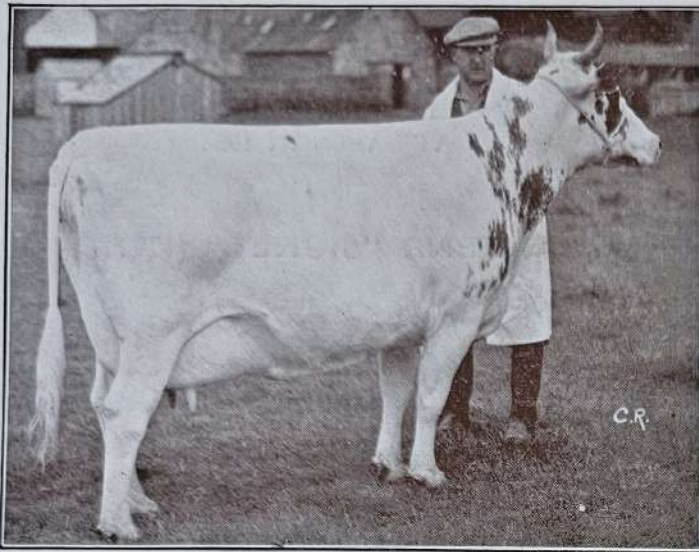
<i>Sunday</i>	- .	4	11	18	25
<i>Monday</i>	- .	5	12	19	26
<i>Tuesday</i>	- .	6	13	20	27
<i>Wednesday</i>	.	7	14	21	28
<i>Thursday</i>	- 1	8	15	22	29
<i>Friday</i>	- 2	9	16	23	30
<i>Saturday</i>	- 3	10	17	24	31

CHANGUE AND BANKEND

PEDIGREE AYRSHIRE HERDS

(Established at
Change. 1867)

One of the Oldest "Ayrshire" Stocks



THREE FIVE-YEAR-OLD COWS DAMS OF BULLS PROMINENT AT THE 1954 SALES

BANKEND "WHITE ROSE 3rd" (207275)

(Born—31st March, 1950.)

DAM—Linnhead "White Rose 7th" (56152)
by Hunter House "Elate" (44001)

SIRE—Bankend "Masterstroke" (86407)
by Bankend "Kitchener" (69145)

MILK RECORD—

Average for 2 lactations—11,195l bs. @ 4.75% b.f.
Calving Interval—395 days.

CHANGUE "MIST 3rd" (207282)

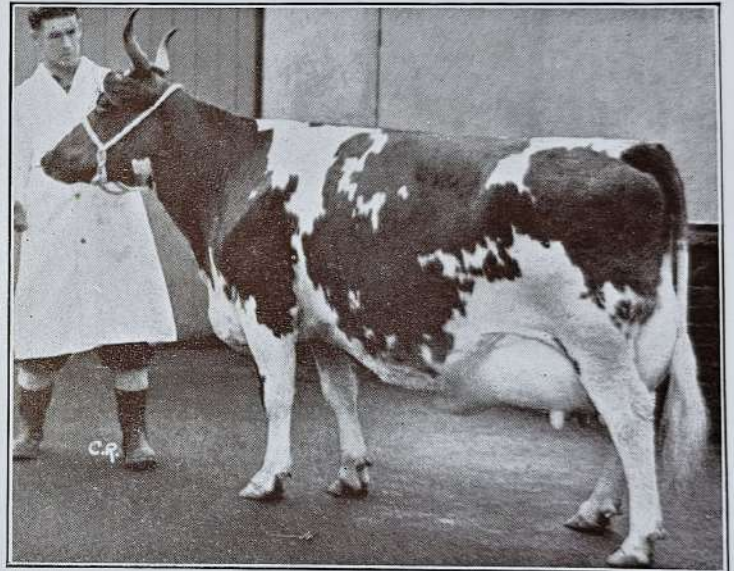
(Born—17th February, 1950)

DAM—Changue "Mist" (63627)
by Lessnessock "San Mario" (45248)

SIRE—Changue "Liberator" (74531)
by Low Milton "Wanderer" (55348) App.

MILK RECORD—

Average for 2 lactations—9302 lbs. @ 4.51% b.f.
Calving Interval—403 days.



CHANGUE "CLOVER 6th" (207279)

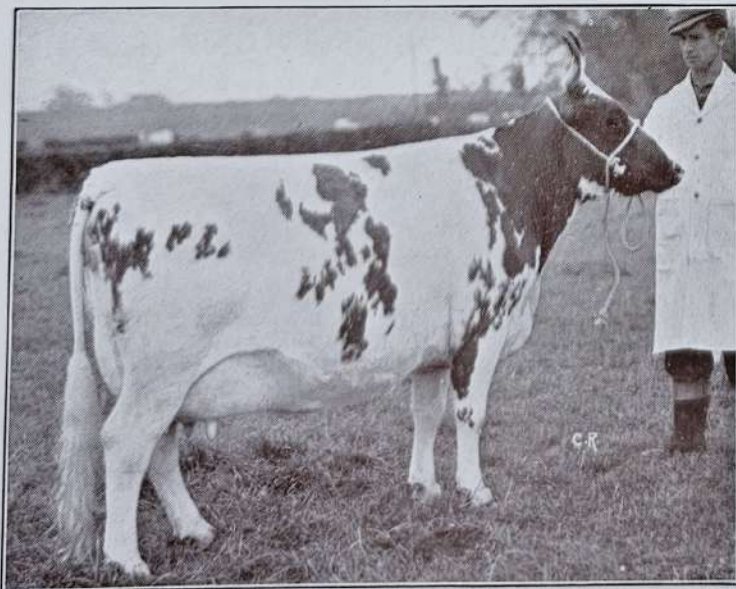
(Born—20th February, 1950)

DAM—Changue "Clover 3rd" (32461)
by Low Milton "Wanderer" (55348) App.

SIRE—Sypland "Target" (50654) App.
by Auchenbrain "Makbar" (46292)

MILK RECORD—

Average for 2 lactations—11,837 lbs. @ 3.83% b.f.
Calving Interval—399 days.



YOUNG BULLS FROM THESE DAMS ARE ILLUSTRATED
OVERLEAF.

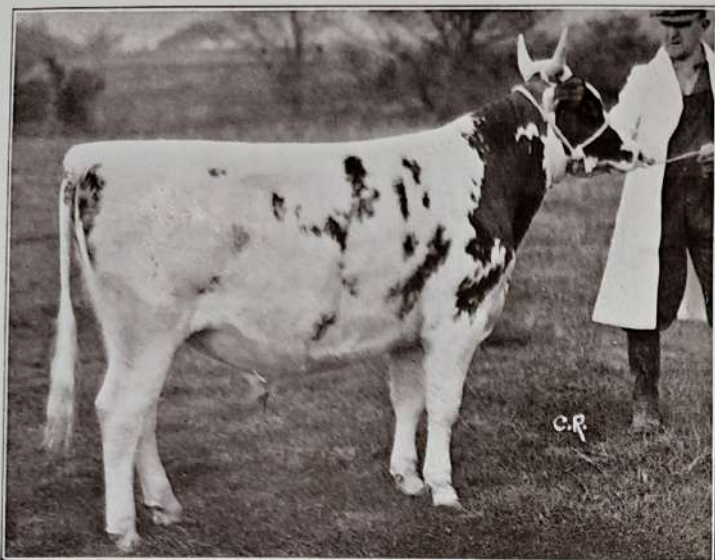
Bred for Conformation and Performance

CHANGUE AND BANKEND

PEDIGREE AYRSHIRE HERDS

(Established at
Change. 1867)

One of the Oldest "Ayrshire" Stocks



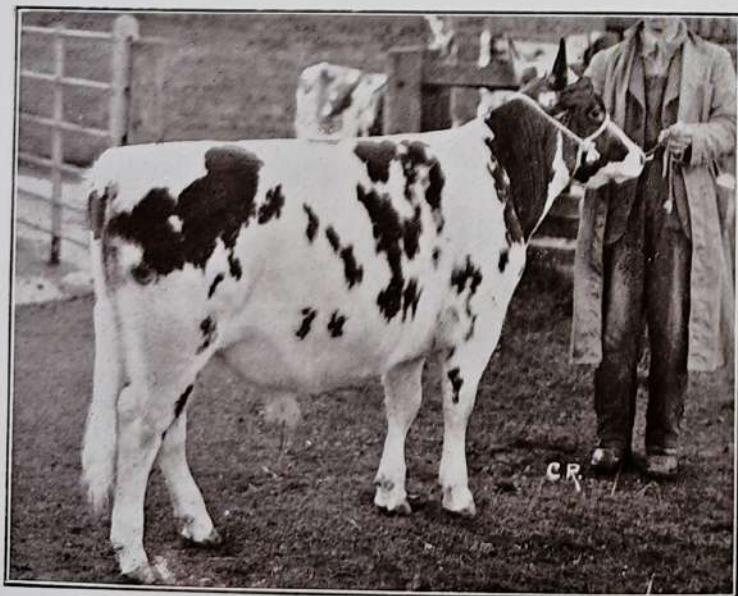
CHANGUE "STATESMAN" (123772)

DAM—Change "Clover 6th" (207279)
by Sypland "Target" (50654) App.

SIRE—Lessnessock "Pendragon" (92322)
by Low Milton "Touchstone" (47541)

Purchased at Ayr Show and Sale, November, 1954 by Jas. A. Scott, Esq., Garbity, Morayshire, at 340 guineas.

BANKEND "SIGNET" was the TOP PRICE BULL at Ayr and the consignment of six from the two Herds made the HIGHEST AVERAGE of the Sale—repeats of last years achievements.



CHANGUE "SCOTSMAN" (123768)

DAM—Change "Mist 3rd" (207282)
by Change "Liberator" (74531)

SIRE—Change "Majestic" (86415)
by Sypland "True Delight" (66734)

SECOND PRIZE JUNIOR BULL—Lanark Show and Sale,
November, 1954. Purchased by Arthur Gilmour, Esq.,
Crosshill, East Kilbride, at 410 guineas.

THE DAMS OF THESE BULLS ARE ILLUSTRATED
OVERLEAF.

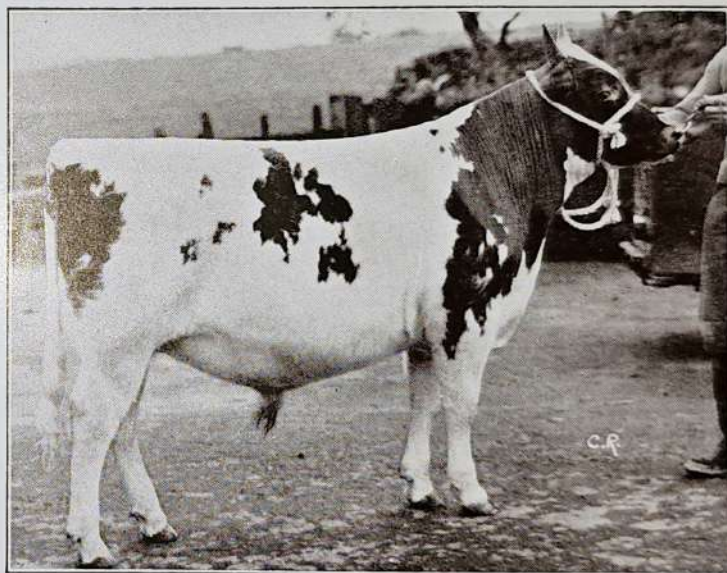
HERD SUCCESSES AT SALES IN 1954

BANKEND "SIGNET" (122716)

DAM—Bankend "White Rose 3rd" (207275)
by Bankend "Masterstroke" (86407)

SIRE—Bankend "Parade" (100289)
by Lessnessock "Pendragon" (92322)

FIRST PRIZE SENIOR BULL—Ayr Show and Sale,
November, 1954. Purchased by the Caledonian Milling Co.,
Aberdeen, at 500 guineas.



Three Young Bulls from our 1954 Crop



Features of Our Service



Under this heading in former years we have illustrated and described the various stages in the chain of distribution—Milk Reception, Cooling, Pasteurising, Bottle Washing and Sterilising, Filling, Capping and Storing.

Delivery

Delivering to our Customers is the final link in the chain and in a scattered rural district such as ours, this presents quite a problem. Our rounds vehicles cover 500 miles daily, calling on some 5,000 homes. Each Roundsman distributes approximately 100 gallons, which includes the Schools and Hospitals in his particular district. To ensure the regularity of our service it is of prime importance to maintain our fleet of 15 vehicles in first-class condition. Immediate attention in the event of a breakdown is necessary. All repairs,

including major overhauls, painting and lettering, are carried out in a fully equipped workshop by our own mechanics. There is no more exacting delivery service than that expected of the "milkman." He is on the job every morning in fair weather or foul and is called on to assist his customers in many ways, carefully recording their varying requirements, keeping them right with the National Milk Scheme and so on. His responsibilities are considerable and no one without a keen sense of duty could tackle the job successfully.

Packaging

We are often complimented by visitors on the appearance of our bottles and we sometimes wonder whether our customers are similarly impressed. Having produced a good article we consider it is worthy of being attractively presented and to this end we have always used a two-colour design. There are very few Dairymen in the country doing this, perhaps because of the extra cost involved, but we still feel we are justified in resisting the temptation to economise in this particular direction.



"Life is an opportunity for service; not as little as we dare, but as much as we can"

—B. F. WESTCOTT.

The Best



Costs no More

You'll feel a lot better if you drink more



Milk has Everything

It is the perfectly balanced food, complete with all the important vitamins. It contains some of every single element you need for health—protein, fat, carbo-hydrate and minerals. Milk gives energy; builds stamina; helps growth; protects you from fatigue and infection. No other soft drink—indeed no solid food—does so much for you at such tiny cost. It doesn't matter how you take milk, hot or cold, in soup, custards or puddings—EVERY DROP OF IT DOES YOU GOOD.

Stevenson's Milk is Safe and Sound

We take every precaution to maintain the high standard of our Milk supply.

Samples are voluntarily submitted at regular intervals to the Milk Utilisation Department of The West of Scotland Agricultural College.

During the past five years 3,210 such samples have been examined for cleanliness, butter fat content and keeping quality.

Empty bottles taken at random from the Bottle Washing Machine are also submitted for sterility tests as a check on the efficiency of the plant.

All this is in addition to the frequent routine tests made by the Local Authority under their statutory powers.

Do's and Dont's

- DO take in your Milk first thing in the morning—
- DON'T leave it lying on the doorstep.
- DO keep the Milk in a cool airy part of the house—
- DON'T keep it in a stuffy, heated atmosphere.
- DO keep the Cap on the bottle when the Milk is not in use—
- DON'T leave the bottle sitting about with the Milk exposed.
- DO place the bottle in water or on a cold stone floor in very warm weather—
- DON'T leave it where the sun can beat down upon it.
- DO try to keep these points in mind—
- DON'T neglect them—then blame the milk.

Milk has so Many Uses

The enclosed set of MILK RECIPES, compiled by *The Good Housekeeping Institute*, is being presented by us in booklet form for your convenience. We are sure you will find in it a few new ideas for making the most of Nature's finest food.

The 7-Day Milk Diet

Reprinted by courtesy of the Scottish Milk Publicity Council.

Breakfast

(every morning during the 7 days)
 1 glass milk
 1 egg, boiled or poached
 1 cup tea or coffee (no sugar)

Nightcap

(every night during the 7 days)
 1 glass milk, hot or cold

A healthy loss of weight in one week

HERE is the 7-day milk diet—specially planned, medically approved and prepared by a Doctor. In just one week you can lose that surplus half stone that makes all the difference between that listless feeling and sprightly good health. Follow the diet faithfully and soon you'll look better, step better, wear your clothes better, work better, feel better.

SUNDAY

Mid-day Meal

Lean meat, grilled or braised
 1 green vegetable
 Apple, pear or orange

Evening Meal

Green salad with grated cheese
 1 glass milk
 1 slice wholemeal bread, thinly buttered

MONDAY

Meat or fish (not fried)
 1 green vegetable
 Stewed apple

Green salad with cold meat
 1 slice melon or ½ grapefruit
 1 glass milk

TUESDAY

Grilled fish
 2 tomatoes
 Lemon jelly

Vegetable broth
 2 biscuits and cheese (1½-in. cube)
 1 glass milk

WEDNESDAY

Grilled liver
 Spinach
 Apple, orange or pear

Cheese and tomato sandwiches
 (2 rounds wholemeal bread)
 1 packet seedless raisins
 1 glass milk

THURSDAY

Clear soup
 Baked fish
 Watercress
 1 Peach

Cauliflower with cheese
 1 glass milk
 1 slice wholemeal bread, thinly buttered

FRIDAY

Tomato juice
 Braised rabbit
 1 green vegetable
 Fresh fruit

½ grapefruit
 Bacon and tomatoes (grilled)
 1 glass milk

SATURDAY

Roast beef or lamb
 1 green vegetable
 Prune whip

Cold ham and salad
 1 apple
 1 glass milk

Take Stevenson's Milk for Goodness Sake!



Stevensons' Dairy Farms

Cumnock

CALENDAR 1955.

JANUARY.		FEBRUARY.		MARCH.		APRIL.		MAY.		JUNE.	
Su.	- 2 9 16 23 30	Su.	- - 6 13 20 27	Su.	- - 6 13 20 27	Su.	- - 3 10 17 24	Su.	- 1 8 15 22 29	Su.	- - 5 12 19 26
Mn.	- 3 10 17 24 31	Mn.	- - 7 14 21 28	Mn.	- - 7 14 21 28	Mn.	- - 4 11 18 25	Mn.	- 2 9 16 23 30	Mn.	- - 6 13 20 27
Tu.	- 4 11 18 25 -	Tu.	- 1 8 15 22 -	Tu.	- 1 8 15 22 29	Tu.	- 5 12 19 26	Tu.	- 3 10 17 24 31	Tu.	- - 7 14 21 28
Wd.	- 5 12 19 26 -	Wd.	- 2 9 16 23 -	Wd.	- 2 9 16 23 30	Wd.	- 6 13 20 27	Wd.	- 4 11 18 25 -	Wd.	- 1 8 15 22 29
Th.	- 6 13 20 27 -	Th.	- 3 10 17 24 -	Th.	- 3 10 17 24 31	Th.	- 7 14 21 28	Th.	- 5 12 19 26 -	Th.	- 2 9 16 23 30
Fr.	- 7 14 21 28 -	Fr.	- 4 11 18 25 -	Fr.	- 4 11 18 25 -	Fr.	- 1 8 15 22 29	Fr.	- 6 13 20 27 -	Fr.	- 3 10 17 24 -
Sa.	- 1 8 15 22 29 -	Sa.	- 5 12 19 26 -	Sa.	- 5 12 19 26 -	Sa.	- 2 9 16 23 30	Sa.	- 7 14 21 28 -	Sa.	- 4 11 18 25 -

CALENDAR 1956.

JANUARY.		FEBRUARY.		MARCH.		APRIL.		MAY.		JUNE.	
Su.	- 1 8 15 22 29	Su.	- - 5 12 19 26	Su.	- - 4 11 18 25	Su.	- 1 8 15 22 29	Su.	- - 6 13 20 27	Su.	- - 3 10 17 24
Mn.	- 2 9 16 23 30	Mn.	- - 6 13 20 27	Mn.	- - 5 12 19 26	Mn.	- 2 9 16 23 30	Mn.	- - 7 14 21 28	Mn.	- - 4 11 18 25
Tu.	- 3 10 17 24 31	Tu.	- - 7 14 21 28	Tu.	- - 6 13 20 27	Tu.	- 3 10 17 24 -	Tu.	- 1 8 15 22 29	Tu.	- - 5 12 19 26
Wd.	- 4 11 18 25 -	Wd.	- 1 8 15 22 29	Wd.	- - 7 14 21 28	Wd.	- 4 11 18 25 -	Wd.	- 2 9 16 23 30	Wd.	- - 6 13 20 27
Th.	- 5 12 19 26 -	Th.	- 2 9 16 23 -	Th.	- 1 8 15 22 29	Th.	- 5 12 19 26 -	Th.	- 3 10 17 24 31	Th.	- - 7 14 21 28
Fr.	- 6 13 20 27 -	Fr.	- 3 10 17 24 -	Fr.	- 2 9 16 23 30	Fr.	- 6 13 20 27 -	Fr.	- 4 11 18 25 -	Fr.	- 1 8 15 22 29
Sa.	- 7 14 21 28 -	Sa.	- 4 11 18 25 -	Sa.	- 3 10 17 24 31	Sa.	- 7 14 21 28 -	Sa.	- 5 12 19 26 -	Sa.	- 2 9 16 23 30

LETTER POSTAGE.

Not exceeding 2 oz. 2½d.
The next 2 oz. 1d.
Each additional 2 oz. or fraction of 2 oz. 1d.
No letter to be above 2 feet in length or 18 ins. in width or depth.

POST CARD RATE.

For every post card. 2d.
" reply post card 4d.

PARCEL POST.

Not exceeding 2 lbs. 1/1
" 3 lbs. 1/3
" 4 lbs. 1/6
" 5 lbs. 1/8
" 6 lbs. 1/10
" 7 lbs. 2/-
" 8 lbs. 2/1
" 11 lbs. 2/3
" 15 lbs. 2/4

Greatest length, 3 feet 6 inches.

Greatest length and girth combined, 6 feet.

REGISTERED PACKETS

(PARCELS INCLUDED).

A fee of 6d. (in addition to the postage) insures to the amount of £5; 7d., £20; 8d., £40; 9d., £60; 10d., £80; 2/2, £400. Each packet must be marked with the word "Registered," and with the amount of the fee.

REGISTERED NEWS. RATE.

Not exceeding 4 oz. (per copy).... 1½d.
For every additional 4 oz. (per copy) ½d.
Maximum Weight 2 lbs.

PRINTED PAPER RATE.

Not exceeding 4 oz. 1½d.
For each additional 2 oz. or fraction of 2 oz. up to 2 lb. ½d.

BLIND LITERATURE RATE.

Not exceeding 2 lbs. ½d.
" 5 " 1d.
" 8 " 1½d.
" 11 " 2d.
" 15 " (Max.) 2½d.

MONEY ORDERS.

INLAND.—Sums not exceeding
up to £20, 10d. | £40, 1/2
£10, 8d. | £30, 1/- | £50, 1/4
No single order can be issued for a sum exceeding £50.

No order may contain a fraction or part of a penny.

POSTAL ORDERS.

s. d. Charge	s. d. Charge
For 0 6.....1½d.	For 10 0.....3d.
" 1 0.....1½d.	" 11 0.....3d.
" 1 6.....2d.	" 12 0.....3d.
" 2 0.....2d.	" 13 0.....3d.
" 2 6.....2d.	" 14 0.....3d.
" 3 0.....2d.	" 15 0.....3d.
" 3 6.....2d.	" 16 0.....3d.
" 4 0.....2d.	" 17 0.....3d.
" 4 6.....2d.	" 18 0.....3d.
" 5 0.....2d.	" 19 0.....3d.
" 6 0.....3d.	" 20 0.....3d.
" 7 0.....3d.	" 21 0.....3d.
" 8 0.....3d.	" 40 0.....6d.
" 9 0.....3d.	

Orders must be cashed within six months of last day of month in which issued. Sender must fill in name of person to whom Order is sent, and he can also fill in the name of any particular Money Order Office, and Order will be cashed at that Office only.

INLAND TELEGRAMS.

12 words 3/-; and every additional word, 3d. Eire, 12 words for 3/6.

BILLS AND PROMISSORY NOTES.

BILL OF EXCHANGE payable on demand, or at sight, or on presentation..... 2d

BILL OF EXCHANGE of any other kind whatsoever (except a bank note) and PROMISSORY NOTE of any kind whatsoever (except a bank note)—drawn, or expressed to be payable, or actually paid, or endorsed, or in any way negotiated in the United Kingdom, where the amount or value of the money for which the bill or note is drawn or made

	s. d.
Does not exceed..... £10.....	0 2
Exceeds £10 and does not exceed 25.....	0 3
" 25 " 50.....	0 6
" 50 " 75.....	0 9
" 75 " 100.....	1 0

And 1s. for every additional £100 or fractional part of £100.

QUARTERLY TERMS.

IN SCOTLAND.		IN ENGLAND.	
Candlemas.....	Feby. 2	Lady Day.....	Mar. 25
Whitsunday.....	May 15	Midsummer.....	June 24
Lammas.....	Aug. 1	Michaelmas.....	Sept. 29
Martinmas.....	Nov. 11	Christmas.....	Dec. 25

BANK HOLIDAYS.

New Year's Day, Good Friday, First Monday in May
First Monday in August, and Christmas.

This Calendar is specially compiled and produced by Stevensons' Dairy Farms. Copyright of all pictures reserved.