

**1966**

# **Calendar**

**1966**

**Twenty-Ninth Issue**



*GOOD COWS . . . GOOD PASTURES . . . GOOD HEALTH*

*Part of the Bankend Herd*

*With the compliments of*

# **J. & J. M. Stevenson**

*. . . your dairy people*



RUSTLER?  
 ... AT CHANGUE?  
 D.W.S.

**Stevensons' Dairy Farms**  
 CUMNOCK ————— Tel. 3255/6

*"Ah! Happy years! once more who would not be a boy?"*  
 BYRON

**JANUARY**

1966

**FEBRUARY**

SUN	2	9	16	23	30
MON	3	10	17	24	31
TUES	4	11	18	25	-
WED	5	12	19	26	-
THUR	6	13	20	27	-
FRI	7	14	21	28	-
SAT	1	8	15	22	29

SUN	-	6	13	20	27
MON	-	7	14	21	28
TUES	1	8	15	22	-
WED	2	9	16	23	-
THUR	3	10	17	24	-
FRI	4	11	18	25	-
SAT	5	12	19	26	-

From our Bakery—Top Quality Confectionery, produced in ideal modern conditions by a fully qualified staff



**THE BLACK LOCH,  
NEW CUMNOCK**

*Photographed by  
Mr. W. G. Porter  
of Cumnock Camera Club;  
the winning entry in our  
Calendar Picture  
Competition.*

**Stevensons' Dairy Farms**

CUMNOCK ————— Tel. 3255/6

*The moon low sailing where the waters fill  
The lozenge lake, beside the banks of balm,  
Gleams like a chevron on the river's arm.*

BRET HARTE.

**MARCH**

**1966**

**APRIL**

SUN	-	6	13	20	27
MON	-	7	14	21	28
TUES	1	8	15	22	29
WED	2	9	16	23	30
THUR	3	10	17	24	31
FRI	4	11	18	25	-
SAT	5	12	19	26	-

SUN	-	3	10	17	24
MON	-	4	11	18	25
TUES	-	5	12	19	26
WED	-	6	13	20	27
THUR	-	7	14	21	28
FRI	1	8	15	22	29
SAT	2	9	16	23	30



CRAIGENCALLY GLEN  
OCHILTREE

## Stevensons' Dairy Farms

CUMNOCK ————— Tel. 3255/6

*When June is come, then all the day  
I'll sit with my love in the scented hay,  
And watch the sunshot palaces high  
That the white clouds build in the breezy sky.*

ROBERT BRIDGES.

### MAY

SUN	1	8	15	22	29
MON	2	9	16	23	30
TUES	3	10	17	24	31
WED	4	11	18	25	-
THUR	5	12	19	26	-
FRI	6	13	20	27	-
SAT	7	14	21	28	-

### 1966

### JUNE

SUN	-	5	12	19	26
MON	-	6	13	20	27
TUES	-	7	14	21	28
WED	1	8	15	22	29
THUR	2	9	16	23	30
FRI	3	10	17	24	-
SAT	4	11	18	25	-

REAL DAIRY CREAM — Place an order with your Roundsman — REAL DAIRY CREAM



AN AYRSHIRE LANDSCAPE  
Near Carbieston Byres, Joppa, Coyllon

## Stevensons' Dairy Farms

CUMNOCK ————— Tel. 3255/6

*Bring back the singing; and the scent  
Of meadowlands at dewy prime; -  
Oh, bring again my heart's content  
Thou Spirit of the Summertime!*

WILLIAM ALLINGHAM.

### JULY

1966

### AUGUST

SUN	3	10	17	24	31
MON	4	11	18	25	-
TUES	5	12	19	26	-
WED	6	13	20	27	-
THUR	7	14	21	28	-
FRI	1	8	15	22	29
SAT	2	9	16	23	30

SUN	-	7	14	21	28
MON	1	8	15	22	29
TUES	2	9	16	23	30
WED	3	10	17	24	31
THUR	4	11	18	25	-
FRI	5	12	19	26	-
SAT	6	13	20	27	-

WELL BRED, HEALTHY STOCK, ENSURE THE HIGH QUALITY OF OUR MILK SUPPLY



*THE WAR MEMORIAL  
AUCHINLECK  
In the grounds of Barony Church*

**Stevenson's Dairy Farms**

CUMNOCK ————— Tel. 3255/6

*On the right of our picture stands the Bell Tower of Auchinleck's Old Kirk, disused since 1838 but soon to be restored as a Kirk Session and Choir Room. Here, James Boswell worshipped, his father was an Elder and his tutor was Minister.*

**SEPTEMBER**

1966

**OCTOBER**

SUN	-	4	11	18	25
MON	-	5	12	19	26
TUES	-	6	13	20	27
WED	-	7	14	21	28
THUR	1	8	15	22	29
FRI	2	9	16	23	30
SAT	3	10	17	24	-

SUN	2	9	16	23	30
MON	3	10	17	24	31
TUES	4	11	18	25	-
WED	5	12	19	26	-
THUR	6	13	20	27	-
FRI	7	14	21	28	-
SAT	1	8	15	22	29

THE ROYAL HOTEL FOR WEDDING RECEPTIONS, PARTIES AND FUNCTIONS OF ALL KINDS



AYR HARBOUR

*My soul is full of longing  
For the secret of the sea.*

LONGFELLOW

## Stevensons' Dairy Farms

CUMNOCK ————— Tel. 3255/6

### NOVEMBER

SUN	-	6	13	20	27
MON	-	7	14	21	28
TUES	1	8	15	22	29
WED	2	9	16	23	30
THUR	3	10	17	24	-
FRI	4	11	18	25	-
SAT	5	12	19	26	-

1966

### DECEMBER

SUN	-	4	11	18	25
MON	-	5	12	19	26
TUES	-	6	13	20	27
WED	-	7	14	21	28
THUR	1	8	15	22	29
FRI	2	9	16	23	30
SAT	3	10	17	24	31

BOTTLES! BOTTLES! BOTTLES! ————— PLEASE RETURN THEM DAILY

# By the way

## STAFF SOCIAL CLUB—FLOWER SHOW

The second Annual Flower, Vegetable and Home Craft Competition and Exhibition was one of the highlights of Social Club activities in 1965. The Judges were Mrs. M. McKnight and Mr. G. Brown of New Cumnock and they commented most favourably on the standard of entries in all Classes. A large number of Staff and friends gathered to view the exhibits and to enjoy the Social Evening at which the Prizes were presented.



*Mr. John Ferguson, Mr. John Hughes and Mrs. Davidson receiving their awards for most points in, respectively, the Flower, Home-Craft and Vegetable sections, from the Judges, Mrs. McKnight and Mr. Brown.*



*Interested and expert spectators at the Vegetable Section during the Exhibition.*

## FEATURING THE STAFF

This year we introduce a new feature to the Calendar, the pictorial presentation of one section of the Staff, and on Pages 6 and 8, to start the series, we take a look at the Roundsmen. It is our intention to deal similarly with other Departments in future issues.

## STAFF PENSION SCHEME

Many years ago a Pension Scheme was considered for long serving employees, but it was contributory in nature and failed to attract sufficient support. In 1965 a non-contributory Pension and Life Assurance Scheme was introduced and was very well received by all concerned. Staff are eligible upon attaining ten years of service and the Scheme provides immediate Life Cover with, on retirement, an appreciable 'Golden Handshake' which may be taken as a lump sum or in the form of a Pension.

## KEEPING ABREAST OF THE TIMES

From time to time in our Calendars we take the opportunity to keep our Customers informed of technical developments and schemes of re-equipment in the various enterprises. In 1965 we discussed and illustrated Bulk Reception of Milk. This year (on Page 2) we feature our new Bottle Washing Machine and the Refrigerated Farm Tank at Change.

We keep constantly in mind our responsibilities to you, our customers, and it will remain our policy to take advantage of all modern developments in dairy technique and the design of dairy equipment.

## BANKEND BULL FOR NEW ZEALAND

In 1966 Mrs. Morton of Ingleside Ayrshire Stud, New Zealand, will take delivery of her fourth Stock Bull from the Change and Bankend Herds. This is Bankend 'Jingo', purchased on her behalf at the November Sale at Ayr.

## BRUCellosIS (Brucella Abortus)

Disease eradication is the constant pre-occupation of the agricultural industry, and following the success of Tuberculin Testing, attention has been turned to Brucellosis.

Only a minority of dairy herds are affected and the risk of injury to public health is small—the greatest effect is on the economics of milk production—but a few progressive farmers have already taken steps to ensure the safety of their milk supply. Our herds at Change, Bankend and Crofthead are completely free from Brucellosis and are regularly subjected to veterinary tests and examination.

## MILK (SPECIAL DESIGNATIONS) ORDER (SCOTLAND) 1965

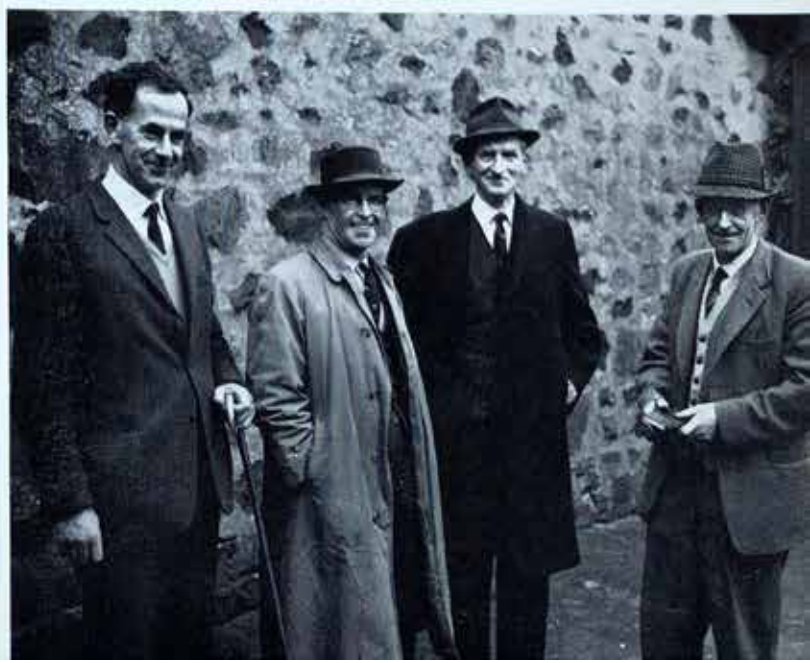
This Order became operative on 18th April, 1965: it heralded the introduction of two new grades of untreated milk and the withdrawal of those with which almost all consumers must have been familiar. From 1st January, 1966, PREMIUM replaces CERTIFIED and STANDARD replaces TUBERCULIN TESTED (UNTREATED) and thus the names which have grown in familiarity and stature over 40 years, pass into disuse.

Not only do we now have new names but the standards, too, are new and improved. PREMIUM MILK is the top quality untreated grade: the compositional requirements of not less than 3.5% butter fat and 8.5% other solids are above the minima specified for all other grades, and the hygienic requirements impose bacteriological and temperature controls which call for the most careful attention to production and distribution methods. PREMIUM MILK is produced and (in its most familiar form) bottled on the farm. STANDARD MILK is the alternative untreated grade. The legal minima of compositional quality are applied and the hygienic requirements here, again, demand much care from those concerned in production and distribution.

A large part of our business is in these top quality, untreated, Grades of Milk, PREMIUM and STANDARD. We welcome the higher standards now imposed and indeed were much involved in the process of consultation which brought about the changes.

## JUNIOR STOCK BULL

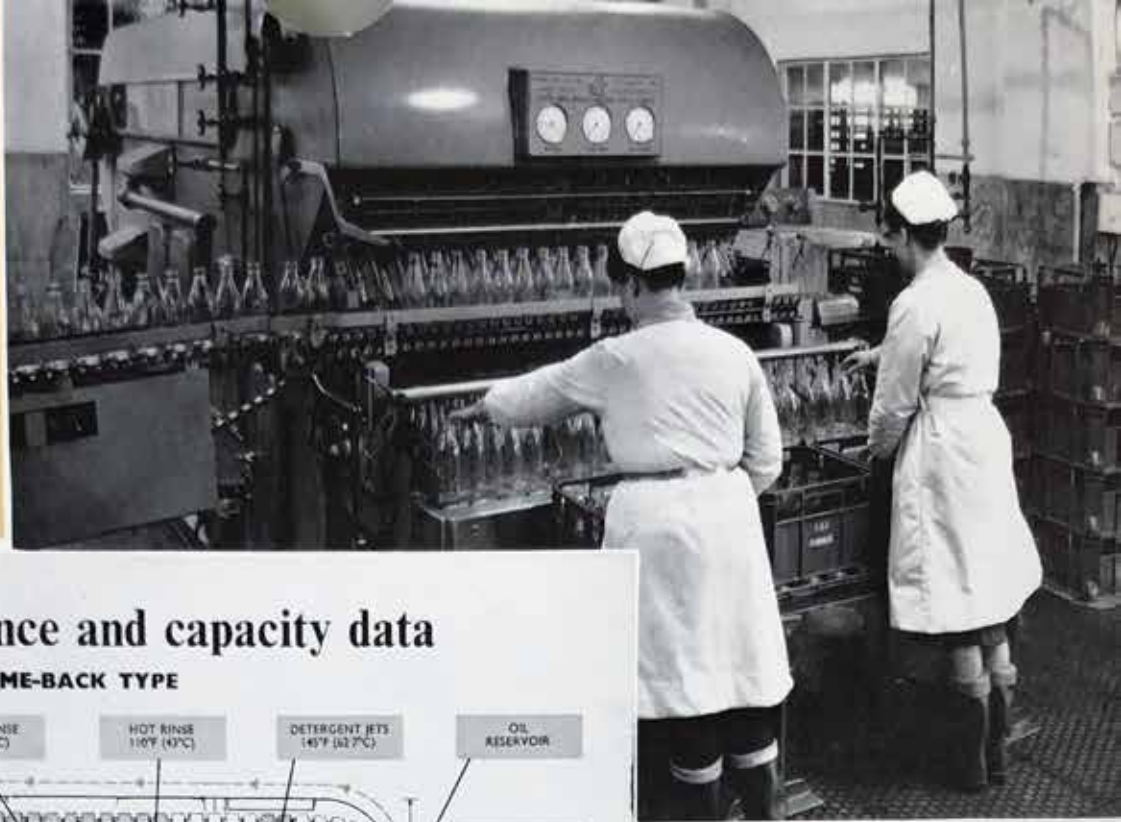
At Lessnessock in November, 1965, Mr. James Stevenson purchased the top price bull of the Sale. He is pictured below after the Sale with the three Montgomerie brothers. (See page 4).





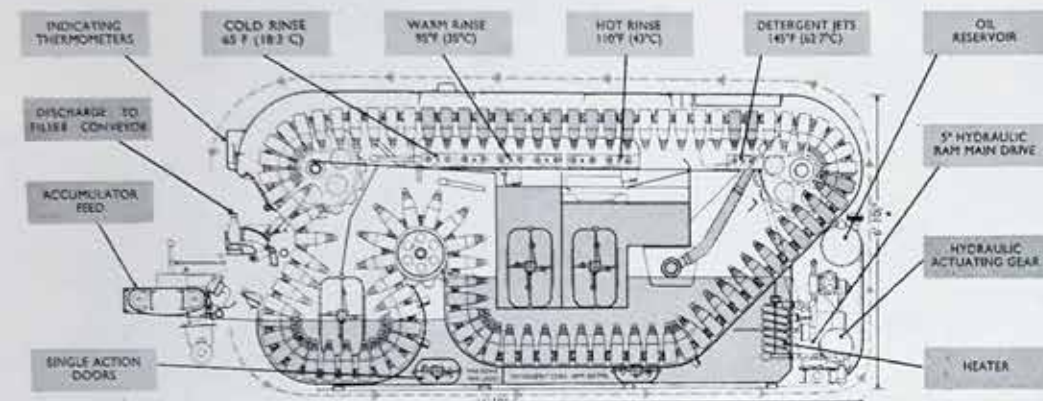
**New Equipment** must be rugged and strong to withstand the strain of continuous use, day after day. Further, the effects of steam, lime deposit, strong detergent and sterilising agents are not conducive to long life in plant of this kind. Our previous bottle washing machine, illustrated in the 1952 Calendar, gave exceptional service, but there came the time when to maintain efficiency, replacement of this, the largest and most costly item of equipment in the Dairy, had to be faced.

**THE NEW BOTTLE WASHER** (right) installed in June 1965, incorporates many new technical features. The operator places the bottles on the stainless steel accumulator feed and from this point, until the sterile bottles, cool, clean and sparkling, reach the filler conveyor, the whole



## Washing sequence and capacity data

COME-BACK TYPE



### Graham-Enock JM Mk. III Fluid Drive Bottle Washer

process is automatic. The bottles, lodged in individual holding baskets, pass through various washing and sterilising processes, viz., pre-soak; detergent soak; detergent jets; hot rinse jets; warm rinse jets; cold rinse jets (see diagram). Compared with the old machine, the new washer increases through-put by 40% and at the same time is much more efficient in the use of power, steam, water, detergent and sterilising materials. **Capacity Data:**—Bottle through-put—10,000 per hour; Time, from feed to discharge—15 mins.; Number of cleaning processes—16; Water Capacity—1,200 galls.; Water Consumption—900 galls. per hour; Working Weight—12 tons. **ON THE OPERATIONAL SIDE**, the experience of a life-time in milk production is supplemented by a trained staff, thoroughly skilled in the use of all the technical equipment of a modern dairy, and trained to observe the essential principles of dairy hygiene.

## NEW PLANT ... To Keep Abreast of the Times

### REFRIGERATED BULK MILK TANK

The farm tank is a comparatively recent development, designed principally to eliminate the labour involved in the use of milk cans and to make possible the transport of milk in bulk by road tankers. Its other main function is to facilitate refrigeration, but no less important is the increase in efficiency which can be achieved when, as with us, the milk is bottled on the farm where it is produced. We illustrate the 250 gallon capacity Desco Refrigerated Farm Tank brought into use in December 1965, for our Changue produced supply of Premium Grade Milk.

An Alfa Laval Milk Lift installation conveys the milk by pipe-line from the Dairy Byre to the glass balancing jar. The milk is then transferred to the Tank where it is chilled and held at 38 F. until bottled. The milk pipe-lines are of Pyrex glass and the remainder of the equipment, including the interior of the tank, of stainless steel. The complete system permits considerable economies to be effected and is, in fact, the ideal arrangement for the production and distribution of milk of the highest quality.

With this, modern, automated set-up at Changue, we are able to transfer milk direct from the Dairy Byre to the bottle without exposure to any possible outside source of contamination.



# CHANGUE and BANKEND

## Ayrshire Herds

ONE OF THE OLDEST 'AYRSHIRE' STOCKS

ESTABLISHED  
AT CHANGUE 1867  
BRUCELLOSIS TESTED

MILK RECORDED  
SINCE 1910  
TUBERCULIN TESTED

### For Sale at Ayr, March, 1966

A 'WHITE ROSE 3rd' BULL

BANKEND 'WHITE ROSE 3rd' (207275)

AN APPROVED DAM and a MEMBER OF THE 150,000 lbs.  
CLUB; NOW IN HER 12th LACTATION.

The 'White Rose 3rd' bull to be sold at Ayr in March is Bankend  
'Keystone' (162587) Q.R., by Lessnessock 'Racing Driver' (156726).



BANKEND 'WHITE ROSE 3rd'

### Sold at Lanark in November

BANKEND 'JURIST' (161642) Q.R.

Dam—Bankend 'Myrtle' (412000)

Sire—Lessnessock 'Racing Driver' (156726)

Third Prize Junior Bull purchased by Messrs. J. T. & J. Lang,  
Cortachy Home Farm, Kirriemuir, Angus, at the second Top Price  
(Equal) of the Sale.



BANKEND 'JURIST'

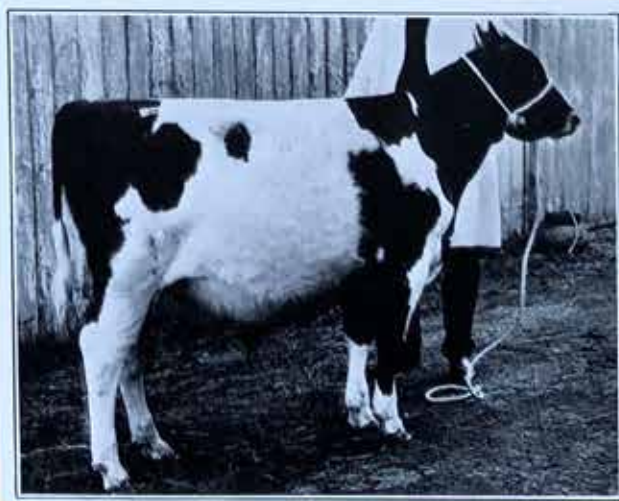
### New Junior Stock Sire

LESSNESSOCK 'CABLE' (162290) Q.R.

Dam—Lessnessock 'Clover 22nd' (683853)

Sire—Lessnessock 'Cream Supreme' (157596)

Purchased at Lessnessock, November, 1965, at the Top Price of  
the Sale. (See inside front cover).



LESSNESSOCK 'CABLE'

**J. & M. STEVENSON**  
**CUMNOCK**

**AYRSHIRE**

CHANGUE  
CROFTHEAD  
BANKEND  
GARRALLAN  
NEWFIELD

CUMNOCK  
"  
"  
"

3255-6  
2241  
3101  
2378  
2458



**ANDREW McCARTNEY**

Rounds Supervisor—has been with the firm since the start of the retail side of the business, almost 30 years ago; claims to be a soccer enthusiast, and supports Ayr United!



**HARVEY HISLOP**

Cumnock, Barrhill Area—with the firm for 18 years; as a hobby, has recently taken up angling.



**ALEX. STEWART**

Cumnock, Glaisnock Area—has 7 years service; in his spare time operates a car-hire business (telephone, Cumnock 2017).



**JOHN FERGUSON**

Lugar, Logan and Craigens—24 years service; well known locally as an angler with a weakness for Loch Leven and any salmon river; Treasurer of the local Angling Association.

## About Your Roundsman

Our Delivery Staff consists of a Rounds Supervisor, 18 District Roundsmen and 2 Relief Roundsmen; of these, 4 have over 20 years service, 8 over 10 years and a few over 5 years. Others have joined the staff more recently to help with the extension of business in Ayr and Alloway and the introduction of a shorter working week. The Roundsmen do more than deliver your milk; they provide the essential service link between our Dairy at Changue and your home. In this way the combined efforts of the whole staff are directed towards providing you, where and when you want it, with a really high grade milk, true in flavour, rich in fat, and of good keeping quality.

You will doubtless know your own Roundsman fairly well, but in this special feature of our Calendar you may learn a little more about him. How long has he been with the firm? In his spare time, does he . . . dig his garden . . . fish . . . breed budgies . . . or what?

Somewhere on this page or on page 8 is

## Your very good friend . . . The Milk Man



**ANDREW SCOTT**

Auchinleck, East—11 years service; an Elder of Lugar Parish Church, his hobby is bowling, both indoor and outdoor.



**WILLIE STEELE**

Auchinleck, West—a comparative new-comer, though not without experience of van sales and delivery; a promising recruit to New Cumnock Bowling Club.



**DAN RAE**

Netherthird and Skerrington—a recent recruit, formerly a Miner; in his spare time operates mini-bus service (telephone, New Cumnock 371).



**DAVIE STEVENSON**

New Cumnock, Pathhead to Alton—7 years service; in his spare time in winter keeps himself warm sawing and selling fire-wood; in summer, a keen trout angler.



**JOHN ARMOUR**

New Cumnock, Dallegles to Couplaford—10 years service; left coal-mining after the Knockshinnoch Pit Disaster (during which he served in the Rescue Brigade) and has been with the firm since; motoring is his hobby.



**TOM STEELE**

New Cumnock, Cairnhill and Glenafon—14 years service; a staunch supporter of New Cumnock Working Men's Club; handy about a house with paper and paint.



**BILL BLACK**

Wholesale Roundsman—24 years service; collects our farm supplies; serves a number of Schools as well as Sub-Purchasers in Muirkirk and Patna; his hobbies are football spectating and motoring; at present running in a new car.



**ALF NAINBY**

Ochiltree, Coyton and Stair—24 years service; in his spare time fills in as Cocktail Barman in a local hotel; no hobbies, he says—other than his family.



**BERT SHANKLAND**

Drongan—14 years service; in his spare time assists in another of the firm's enterprises, The Royal Hotel, Cumnock; his family occupies the remainder of his spare time.



**TOM O'KEEFE**

Drongan and Rankinston—10 years service; one of a well-known group of New Cumnock anglers; bowls, in the summer.

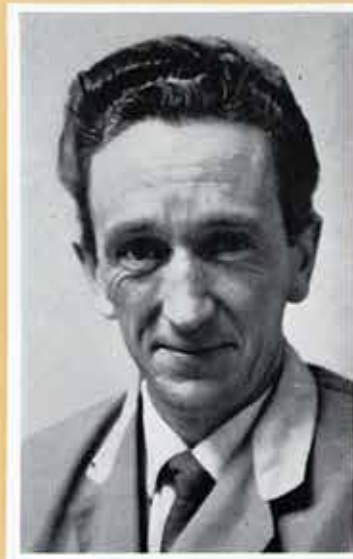
## About Your Roundsman

*(Continued from page six)*



**JIM WARDROP**

Ayr, Alloway and Doonfoot—3 years service; another well-known angler (an expert on the Clyde) and Secretary of the Local Angling Association; winner for the past two years of our Staff Angling Club Trophy.



**JIM MURCHISON**

Ayr, Castlehill to Midton—12 years service; assists in The Royal Hotel as relief Cocktail Barman; likes a good book, especially one on Travel.



**BILL ALLARDYCE**

Ayr, Newton, Fort and Central—6 years service; recently rejoined Staff after a spell in the Merchant Navy; when off duty, gives Driving Lessons for a local School.



**BERT HALL**

Manchline, Ballochmyle Hospital and Soers—10 years service; another keen angler, expert with the dry fly; also runs a well-known local Dance Band.



**TOM O'REILLY**

Catrine District—a Catrine man, now living in Cumnock; a Miner until he joined the firm, recently; yet another keen angler.



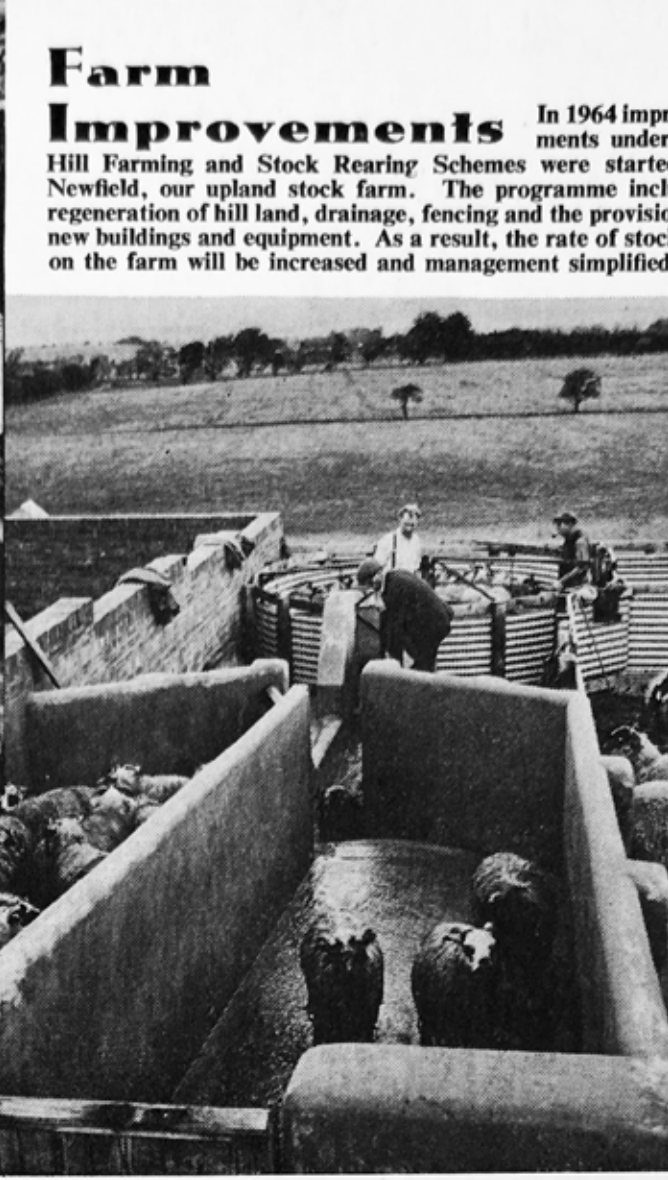
**JIM FINDLAY**

Relief Roundsman for area West of Cumnock—recently rejoined staff; Sergeant in 4th/5th Bn. R.S.F. (T.A.); other spare time interest is Old-Time and Sequence Dancing.



**JOHN WITHERS**

Relief Roundsman for area North of Cumnock—a recent recruit; a keen gardener and successful breeder and exhibitor of Budgerigars.



# Farm Improvements

In 1964 improvements under

Hill Farming and Stock Rearing Schemes were started at Newfield, our upland stock farm. The programme includes regeneration of hill land, drainage, fencing and the provision of new buildings and equipment. As a result, the rate of stock on the farm will be increased and management simplified.

Our pictures show dipping of the sheep stock in progress. For those not familiar with the procedure, the sheep first enter the circular pen where two revolving gates simplify the task of gripping and passing them singly into the dipper. In the dipper they are completely submerged in a liquid dip solution before reaching a ramp which takes them to one or other of two dripping pens, where surplus dip drains off and returns to the dipper. When the second dripping pen is full, the first is emptied by passing the sheep to a further holding area, or allowing them to return to the hill. Dipping is carried out twice yearly; apart from helping to waterproof the fleece, it is an essential measure in the prevention of disease and the maintenance of a healthy sheep stock.

(Photos: Cumnock Chronicle)

## CALENDAR 1966

JANUARY		FEBRUARY		MARCH		APRIL		MAY		JUNE	
Su.	- 2 9 16 23 30	Su.	- - 6 13 20 27	Su.	- - 6 13 20 27	Su.	- - 3 10 17 24	Su.	- 1 8 15 22 29	Su.	- - 5 12 19
Mn.	- 3 10 17 24 31	Mn.	- - 7 14 21 28	Mn.	- - 7 14 21 28	Mn.	- - 4 11 18 25	Mn.	- 2 9 16 23 30	Mn.	- - 6 13 20
Tu.	- 4 11 18 25 -	Tu.	- 1 8 15 22 -	Tu.	- 1 8 15 22 29	Tu.	- 5 12 19 26	Tu.	- 3 10 17 24 31	Tu.	- - 7 14 21
Wd.	- 5 12 19 26 -	Wd.	- 2 9 16 23 -	Wd.	- 2 9 16 23 30	Wd.	- 6 13 20 27	Wd.	- 4 11 18 25 -	Wd.	- 1 8 15 22
Th.	- 6 13 20 27 -	Th.	- 3 10 17 24 -	Th.	- 3 10 17 24 31	Th.	- 7 14 21 28	Th.	- 5 12 19 26 -	Th.	- 2 9 16 23
Fr.	- 7 14 21 28 -	Fr.	- 4 11 18 25 -	Fr.	- 4 11 18 25 -	Fr.	- 1 8 15 22 29	Fr.	- 6 13 20 27 -	Fr.	- 3 10 17 24
Sa.	1 8 15 22 29 -	Sa.	- 5 12 19 26 -	Sa.	- 5 12 19 26 -	Sa.	- 2 9 16 23 30	Sa.	- 7 14 21 28 -	Sa.	- 4 11 18 25
JULY		AUGUST		SEPTEMBER		OCTOBER		NOVEMBER		DECEMBER	
Su.	- 3 10 17 24 31	Su.	- 7 14 21 28	Su.	- - 4 11 18 25	Su.	- 2 9 16 23 30	Su.	- - 6 13 20 27	Su.	- - 4 11 18
Mn.	- 4 11 18 25 -	Mn.	- 1 8 15 22 29	Mn.	- - 5 12 19 26	Mn.	- 3 10 17 24 31	Mn.	- - 7 14 21 28	Mn.	- - 5 12 19
Tu.	- 5 12 19 26 -	Tu.	- 2 9 16 23 30	Tu.	- - 6 13 20 27	Tu.	- 4 11 18 25 -	Tu.	- 1 8 15 22 29	Tu.	- - 6 13 20
Wd.	- 6 13 20 27 -	Wd.	- 3 10 17 24 31	Wd.	- - 7 14 21 28	Wd.	- 5 12 19 26 -	Wd.	- 2 9 16 23 30	Wd.	- - 7 14 21
Th.	- 7 14 21 28 -	Th.	- 4 11 18 25 -	Th.	- 1 8 15 22 29	Th.	- 6 13 20 27 -	Th.	- 3 10 17 24 -	Th.	- 1 8 15 22
Fr.	1 8 15 22 29 -	Fr.	- 5 12 19 26 -	Fr.	- 2 9 16 23 30	Fr.	- 7 14 21 28 -	Fr.	- 4 11 18 25 -	Fr.	- 2 9 16 23
Sa.	2 9 16 23 30 -	Sa.	- 6 13 20 27 -	Sa.	- 3 10 17 24 -	Sa.	1 8 15 22 29 -	Sa.	- 5 12 19 26 -	Sa.	- 3 10 17 24

## CALENDAR 1967

JANUARY		FEBRUARY		MARCH		APRIL		MAY		JUNE	
Su.	- 1 8 15 22 29	Su.	- - 5 12 19 26	Su.	- - 5 12 19 26	Su.	- 2 9 16 23 30	Su.	- 7 14 21 28	Su.	- - 4 11 18
Mn.	- 2 9 16 23 30	Mn.	- - 6 13 20 27	Mn.	- - 6 13 20 27	Mn.	- 3 10 17 24 -	Mn.	- 1 8 15 22 29	Mn.	- - 5 12 19
Tu.	- 3 10 17 24 31	Tu.	- - 7 14 21 28	Tu.	- - 7 14 21 28	Tu.	- 4 11 18 25 -	Tu.	- 2 9 16 23 30	Tu.	- - 6 13 20
Wd.	- 4 11 18 25 -	Wd.	- 1 8 15 22 -	Wd.	- 1 8 15 22 29	Wd.	- 5 12 19 26 -	Wd.	- 3 10 17 24 31	Wd.	- - 7 14 21
Th.	- 5 12 19 26 -	Th.	- 2 9 16 23 -	Th.	- 2 9 16 23 30	Th.	- 6 13 20 27 -	Th.	- 4 11 18 25 -	Th.	- 1 8 15 22
Fr.	- 6 13 20 27 -	Fr.	- 3 10 17 24 -	Fr.	- 3 10 17 24 31	Fr.	- 7 14 21 28 -	Fr.	- 5 12 19 26 -	Fr.	- 2 9 16 23
Sa.	- 7 14 21 28 -	Sa.	- 4 11 18 25 -	Sa.	- 4 11 18 25 -	Sa.	1 8 15 22 29 -	Sa.	- 6 13 20 27 -	Sa.	- 3 10 17 24

# J. & J. M. STEVENSON

PARTNERS: JOHN STEVENSON M.B.E., JAMES M. STEVENSON

Registered Office: 42 AYR ROAD, CUMNOCK (Tel. 3255/6), AYRSHIRE

DAIRY FARMS: CHANGUE (Tel. 3027) BANKEND (Tel. 3101) CROFTHEAD (Tel. 2241) STOCK FARM: NEWFIELD (Tel. 2458)