

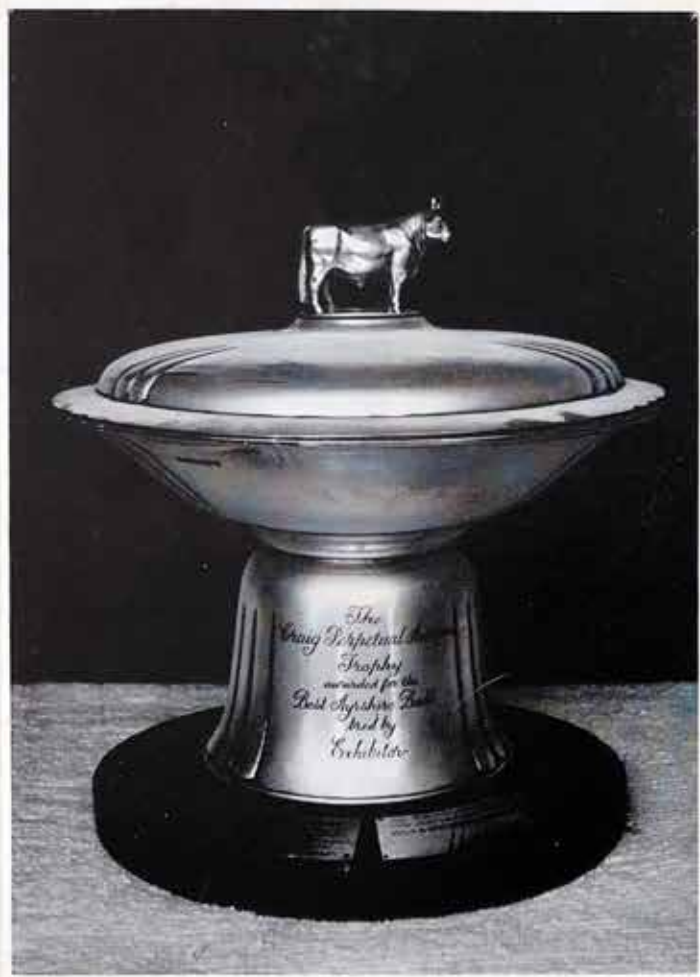
1965

Calendar

1965

TWENTY-EIGHTH ISSUE

*Championship  
Double . . .*



*Ayr and  
Lanark 1964*

*With the Compliments of . . .*

J. & J. M. STEVENSON

*. . . your dairy people*



OUR NEW SHOP  
No. 3 Glaisnock Street.

*Stevenson's Dairy Farms*  
CUMNOCK ————— Tel. 3255/6

*"Life is an opportunity for service; not as little as we dare, but as much as we can."*  
B. F. WESTCOTT.

**JANUARY**

SUN	3	10	17	24	31
MON	4	11	18	25	-
TUES	5	12	19	26	-
WED	6	13	20	27	-
THUR	7	14	21	28	-
FRI	1	8	15	22	29
SAT	2	9	16	23	30

**1965**

**FEBRUARY**

SUN	-	7	14	21	28
MON	1	8	15	22	-
TUES	2	9	16	23	-
WED	3	10	17	24	-
THUR	4	11	18	25	-
FRI	5	12	19	26	-
SAT	6	13	20	27	-

From our Bakery—Top Quality Confectionery, produced in ideal modern conditions by a fully qualified staff





NEWFIELD, CUMNOCK  
our stock rearing farm.

TWIN LAMBS ON THE IN-BYE FIELDS

*Stevensons' Dairy Farms*  
CUMNOCK ————— Tel. 3255/6

*Sooth't were a pleasant life to lead,  
With nothing in the world to do  
But just to blow a shepherd's reed,  
The silent season thro'.*

**MARCH**

**1965**

**APRIL**

SUN	-	7	14	21	28
MON	1	8	15	22	29
TUES	2	9	16	23	30
WED	3	10	17	24	31
THUR	4	11	18	25	-
FRI	5	12	19	26	-
SAT	6	13	20	27	-

SUN	-	4	11	18	25
MON	-	5	12	19	26
TUES	-	6	13	20	27
WED	-	7	14	21	28
THUR	1	8	15	22	29
FRI	2	9	16	23	30
SAT	3	10	17	24	-

AYE READY—YOU MAY VISIT OUR DAIRY AT CHANGUE AT ANY TIME





Picture by J. G. Ingham,  
 Cumnock Camera Club;  
 winning entry in our Calendar  
 Picture Competition.

*"On thy fairy bosom, silver lake,  
 The wild swan spreads his snowy sail  
 And round his breast the ripples break  
 As down he bears before the gale."*  
 J. G. PERCIVAL.

**Stevenson's Dairy Farms**  
 CUMNOCK ————— Tel. 3255/6

**MAY**

1965

**JUNE**

SUN	2	9	16	23	30
MON	3	10	17	24	31
TUES	4	11	18	25	-
WED	5	12	19	26	-
THUR	6	13	20	27	-
FRI	7	14	21	28	-
SAT	1	8	15	22	29

SUN	-	6	13	20	27
MON	-	7	14	21	28
TUES	1	8	15	22	29
WED	2	9	16	23	30
THUR	3	10	17	24	-
FRI	4	11	18	25	-
SAT	5	12	19	26	-

REAL DAIRY CREAM — Place an order with your Roundsman — REAL DAIRY CREAM





*GOOD COMPANIONS*  
 "HAPPY" with her friends,  
 Doi, Robert, Jenny and Allan.

*"God made all the creatures and gave them  
 our love and our fear,  
 To give sign we and they are His children,  
 one family here."*

ROBERT BROWNING.

## Stevenson's Dairy Farms

CUMNOCK

Tel. 3255/6

### JULY

1965

### AUGUST

SUN	-	4	11	18	25
MON	-	5	12	19	26
TUES	-	6	13	20	27
WED	-	7	14	21	28
THUR	1	8	15	22	29
FRI	2	9	16	23	30
SAT	3	10	17	24	31

SUN	1	8	15	22	29
MON	2	9	16	23	30
TUES	3	10	17	24	31
WED	4	11	18	25	-
THUR	5	12	19	26	-
FRI	6	13	20	27	-
SAT	7	14	21	28	-

WELL BRED, HEALTHY STOCK, ENSURE THE HIGH QUALITY OF OUR MILK SUPPLY





THE EGLINTON HUNT  
AT BALLOCHMYLE.

*Stevensons' Dairy Farms*

CUMNOCK

Tel. 3255/6

*"Twas the sound of his horn called me  
from my bed,  
And the cry of his hounds has me oft-times led;  
For Peel's view — hollo would waken the dead,  
Or a fox from his lair in the morning."*  
J. G. GRAVES.

**SEPTEMBER**

SUN	-	5	12	19	26
MON	-	6	13	20	27
TUES	-	7	14	21	28
WED	1	8	15	22	29
THUR	2	9	16	23	30
FRI	3	10	17	24	-
SAT	4	11	18	25	-

**1965**

**OCTOBER**

SUN	3	10	17	24	31
MON	4	11	18	25	-
TUES	5	12	19	26	-
WED	6	13	20	27	-
THUR	7	14	21	28	-
FRI	1	8	15	22	29
SAT	2	9	16	23	30

THE ROYAL HOTEL FOR WEDDING RECEPTIONS, PARTIES AND FUNCTIONS OF ALL KINDS





LOCHHILL, NEW CUMNOCK.

## Stevenson's Dairy Farms

CUMNOCK

Tel. 3255/6

### SEEKING SHELTER

*"An' tent them duly, e'en an' morn,  
Wi' teats o' hay, an' rippis o' corn."*

ROBERT BURNS.

### NOVEMBER

SUN	-	7	14	21	28
MON	1	8	15	22	29
TUES	2	9	16	23	30
WED	3	10	17	24	-
THUR	4	11	18	25	-
FRI	5	12	19	26	-
SAT	6	13	20	27	-

1965

### DECEMBER

SUN	-	5	12	19	26
MON	-	6	13	20	27
TUES	-	7	14	21	28
WED	1	8	15	22	29
THUR	2	9	16	23	30
FRI	3	10	17	24	31
SAT	4	11	18	25	-

BOTTLES! BOTTLES! BOTTLES! ————— PLEASE RETURN THEM DAILY





# Noteworthy

## N.F.U. IN AYRSHIRE

On the evening before the Annual General Meeting of the National Farmers' Union of Scotland, held this year at Turnberry Hotel, the Ayr Executive of the Union entertained office-bearers and officials at Changue. (Mr. John Stevenson, a Council Member for Ayrshire, is Convener of the Union's Milk Committee). In this photograph taken in the dairy byre, are a few of the guests who took the opportunity to have a look at the stock. Left to right; David Sillars (Ayr), Area President; David Goodfellow (Angus), a Past-President of the Union; R. H. U. Stevenson (Ayr), a Past-President, Ayr Area; and Robert Pate (Lanark), Convener of the Union Potato Committee; with Mr. James Stevenson. (Photo: N.F.U.)

## ICELANDIC FARMERS

In June we had a visit from a party of Icelandic farmers who were making a tour of Scottish farms, arranged for them by the N.F.U. The group, taken at Changue, includes Gunnar

Gudbjartsson, Chairman of the Icelandic Farmers' Union and Olafur Stefansson, Director of the Agricultural Society of Iceland; Mr. David Sillars and Mr. Alex. Meikle, President and Vice-President of the Ayr Executive of the Scottish N.F.U.; Mr. John Friend, local group Secretary and Mr. James Stevenson. (Photo: Cumnock Chronicle)

## FROM THE VISITORS' BOOK

In addition to those illustrated we had several other interesting groups of visitors from home and abroad; the Soroptimist Club from Motherwell and Wishaw; a group of Councillors from Sarawak, under the auspices of the British Council; a party of Students from India; and the Men's Guild from the Old Church, Cumnock and Castlehill Church, Ayr. We also had visits from Mr. Shibuya of the Japanese Ministry of Agriculture; Doctors Endrejat and Federmann of the Veterinary Department, West Germany, and Dr. Kelly of the Department of Agriculture, Prince Edward Island.



## AYRSHIRE CATTLE BREEDERS

Dumfries and District Ayrshire Breeders' Club visited our Farms and Dairy Premises in July. This was the first visit we had had from one of these newly-formed Breeders' Clubs and it was a pleasure to entertain such an interested and knowledgeable party. The group of young bulls seen here being inspected by the party includes Changue 'Hercules,' Champion at Lanark in November. Altogether, fourteen bulls were sold in the Autumn, either privately or by auction, and a further ten will be offered for sale in the Spring. (Photo: Cumnock Chronicle)

NOTEWORTHY—Continued on page eleven.





# A Trio of Champions in 1964

## At Ayr in November

FIRST PRIZE JUNIOR BULL and WINNER of the CRAIG PERPETUAL CHAMPIONSHIP TROPHY.

### BANKEND 'HIGH GRADE' (159865)

Dam—Bankend 'Annabel 4th' (694379)  
Sire—Lessnessock 'Stop Now' (139699)

Purchased by Messrs. R. J. & J. W. Liggett, Tullyhue House, Tanderagee, Co. Armagh, Northern Ireland.



BANKEND 'HIGH GRADE'

## At Lanark in November

FIRST PRIZE JUNIOR BULL and WINNER of the LAWRIE and SYMINGTON CHALLENGE CUP.

### CHANGUE 'HERCULES' (159929)

Dam—Bankend 'Doreen 8th' (713077)  
Sire—Lessnessock 'Stop Now' (139699)

Purchased by Mr. Leith, Drystone, Kintore, Aberdeenshire.



CHANGUE 'HERCULES'

## At Ayr in March

FIRST PRIZE JUNIOR BULL and RESERVE CHAMPION

### BANKEND 'HUNTSMAN' (158540)

Dam—Bankend 'Myrtle 3rd' (659083)  
Sire—Bankend 'Welcome' (139028)

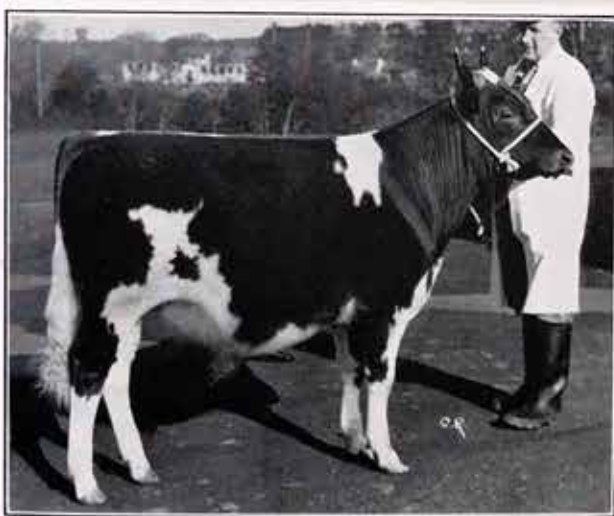
Purchased by Messrs. C. & H. Papworth, Hall Farm, Conington, Elsworth, Cambridge. Messrs. Papworth had an impressive run of Show successes with 'Huntsman' in the 1964 Season. The bull was unbeaten in eight outings to local, County and National Shows, his principal awards being:—

First Prize and Reserve Champion at the Royal.

First Prize and Champion at Essex.

First Prize and Reserve Champion (All Breeds) at Bedford.

As Mr. Papworth, himself, says, "Not too bad, for a young man!"



BANKEND 'HUNTSMAN'

## 1946 — HONOURS LIST — 1964

The Changue and Bankend Herds have been leading Prize Winners at both Ayr and Lanark Bull Sales for many years.

1946	Lanark	First Prize Senior	RESERVE CHAMPION	1961	Ayr	(March Sale)—
	Ayr	First Prize Junior	First Prize Junior			6th Prize (Joint Top Price)
1947	Ayr	RESERVE CHAMPION	First Prize Senior		Ayr	(November Sale)—
		Second Prize Junior	First Prize Senior			6th Prize (Top Price)
	Lanark	First and Third Prize Junior	Second Prize Junior	1963	Ayr	(March Sale)—
1948	Ayr	CHAMPION	CHAMPION			CHAMPION
		First Prize Junior	First Prize Senior			(with a Changue bred bull
	Lanark	First Prize Junior	Third Prize Junior			entered from Auchenflower)
1949	Lanark	First Prize Junior	First Prize	1964	Ayr	(March Sale)—
		Second Prize Junior	First and Second Prizes			RESERVE CHAMPION
1950	Ayr	RESERVE CHAMPION	First Prize	1964	Ayr	(November Sale)—
		First and Second Prize Senior	Third Prize Junior			CHAMPION
		Third Prize Junior	First Prize Senior			First Prize Junior
	Lanark	Second Prize Junior	CHAMPION			Third Prize Junior
1951	Ayr	Second and Third Prize Junior	First Prize Junior			(November Sale)—
1952	Lanark	First Prize Group of Three	Second Prize Senior		Lanark	CHAMPION
		Second Prize Junior	First Prize Junior			First Prize Junior
1953	Ayr	CHAMPION	5th Prize (Top Price)	1960	Ayr	



# CHANGUE and BANKEND Ayrshire Herds

ESTABLISHED  
AT CHANGUE 1867

ONE OF THE OLDEST 'AYRSHIRE' STOCKS

MILK RECORDED  
SINCE 1910

## Six Generations of the Clover Family

To have six generations of one cow family in a Herd with five of the animals in production is a rare occurrence; for three of them to have qualified for the 100,000 lbs. Club and two of these for the 150,000 lbs. Club must be unique.



G.G.G.G.-DAM    G.G.G.-DAM    G.G.-DAM    G.-DAM    DAM    CHANGUE "CORNFLOWER 2nd"

The following are the yields of the five cows; reading from left to right:—

- CHANGUE 'CLOVER 3rd,' (born 26th March, 1946) 149,545 lbs. milk at 4.10% b.f. in 14 lactations (still milking).
- CHANGUE 'CLOVER 6th,' (born 20th February, 1950) 154,393 lbs. milk at 3.73% b.f. in 11 lactations (still milking).
- CHANGUE 'COLUMBINE,' (born 10th September, 1952) 99,919 lbs. milk at 4.30% b.f. in 9 lactations (still milking).
- CHANGUE 'CELANDINE,' (born 26th March, 1955) 82,670 lbs. milk at 4.28% b.f. in 7 lactations (still milking).
- CHANGUE 'CROCUS 3rd,' (born 17th March, 1960) 25,887 lbs. milk at 4.52% b.f. in 2 lactations.

AVERAGE FOR 43 LACTATIONS (4 UNFINISHED) 12,000 LBS. MILK AT 4.08% B.F.

'Clover 3rd' was First Prize Calving Heifer and Champion of the Yeld Section at Maybole Show, October, 1948. Her dam, Changue 'Choice 5th' won the Veteran's Trophy at Ayr Show in April, 1948, and was First Prize Cow-in-Milk at Catrine Show in 1947.

Changue 'Columbine' is the Dam of Changue 'Valiant' one of our Senior Stock Bulls and the sire of the Changue group of ten cows placed Second in the 1963 National Progeny Competition.

Changue 'Celandine' is the Dam of Changue 'Hallmark,' exported in 1964 to Mrs. Zeala Morton, Ingleside Ayrshire Stud, New Zealand.

NOTE—To illustrate the characteristics of hardiness and longevity as well as the productive capacity of the Ayrshire Cow, an enlarged print of this photograph was displayed on the Ayrshire Cattle Society's stand at the London Dairy Show (November, 1964).

**S. J. & M. STEVENSON**    **CUMNOCK**    **AYRSHIRE**

CHANGUE CROFTHEAD  
BANKEND  
GARRALLAN  
NEWFIELD

CUMNOCK	3255-6
"	2241
"	3101
"	2378
"	2458



# The March of Progress— In the Bakery

AFTER ALMOST 30 YEARS IN THE SQUARE, IN THE SHOP KNOWN TO MANY AS THE MILK BAR, WE ARE PLEASED TO BE ABLE TO OFFER OUR CUSTOMERS AN IMPROVED SERVICE FROM OUR NEW PREMISES AT 3 GLAISNOCK STREET. These combine many new features in Bakery Shop design and decor, including a modern display counter made to our own specification, with a refrigerated centre portion for cream and other perishable goods and additional cold storage accommodation for milk and dairy produce. The walls of the shop are panelled in Burmese teak to a height of eight feet and the floor covering is light coloured Vinyl Corlon. The frontage is in Roso-Levanto marble and the entrance is laid with marble sections set in terrazzo. All working surfaces are of impervious materials and there are the necessary facilities to enable a high standard of hygiene to be maintained. The shop is spacious, well ventilated and attractively lit; THE COMBINED EFFECT IS OF FRESHNESS AND CLEANLINESS AND OF CONSIDERATION FOR THE COMFORT AND REQUIREMENTS OF THE CUSTOMER.

RIGHT—Brian Mills, apprentice, at the oven.



With Mr. David Cowan, a fully qualified baker and confectioner in charge of the Bakery, we have been able to widen the range of goods, particularly in fresh cream confectionery, now a special feature of our business.

RIGHT—George Lyon, David Cowan, Terry Hessett and Tom Irving at work in the new Bakery (note tiled surfaces and good lighting).



ABOVE—Mr. David Cowan.

Already it is evident that our efforts to provide a service in keeping with the best city standards have been well received.

The opening of the Shop is the final stage in the re-organisation of this section of our business (which provides employment for a staff of nine) and some indication of the new set-up is provided by the photographs on this and on the January/February pages of the Calendar.

The old shop and restaurant in the Square will now be incorporated in the Royal Hotel (from which it was separated in 1936 when our retail business in Cumnock was established). Permission has already been granted by the Licensing Court for the conversion of these premises to a spacious Cocktail Bar.

LEFT—Joan Kerr, Mary McHoull and Mrs. Young, at your service.







ABOVE—The New Primary School at Logan (Head-Master Mr. Alex. Rowan).

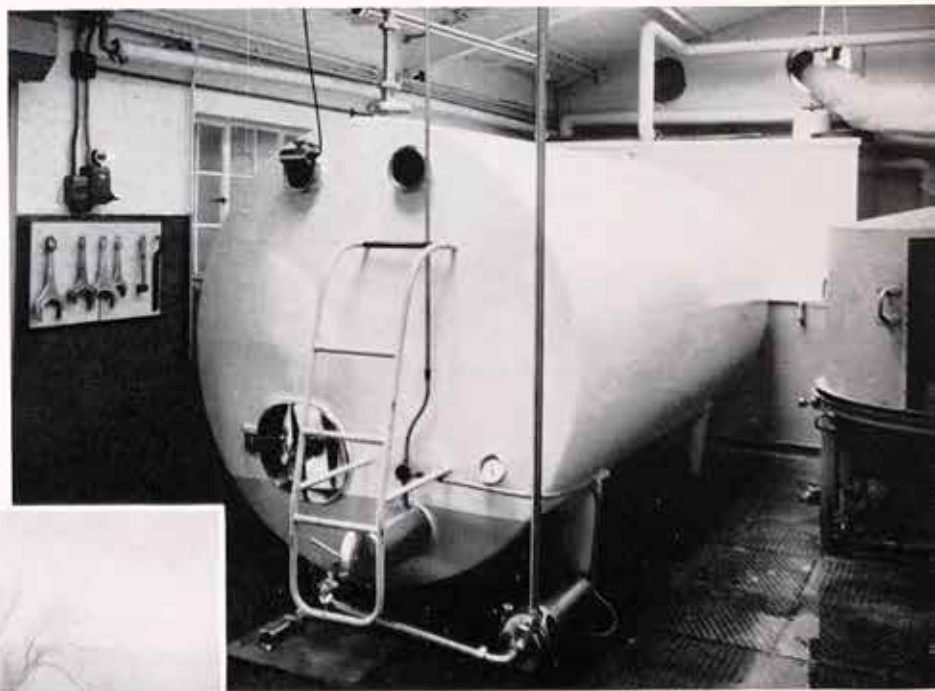
## ***The March of Progress— In the Dairy***

BELOW—The Bulk Reception Tank installed at Changue, October, 1964.

This modern school was built to replace the old school at Logan following the movement of housing development to Logan. We have been entrusted with the supply of Milk to Schools in the central part of Ayrshire for over 25 years and are at present under contract with the County Council for 30 schools catering for almost 10,000 girls and boys every school day. We are well aware of our responsibilities in this connection and our policy has always been to take advantage of modern trends, both in the design of equipment and of development in dairy techniques. In October last year, for instance, we installed a 2,000-gallon bulk reception tank to enable us to accept the major portion of our supplies by road tanker.

The use of the 10-gallon can for the transport of milk from farm to creamery will soon be a thing of the past. Refrigerated stainless steel Farm Tanks, in which the milk is cooled and maintained at a low temperature until collected by road tanker, are now installed on many farms. This development makes possible a higher standard of hygiene and an overall improvement in milk quality. It also eliminates the drudgery involved in the use of cans by producers, hauliers and distributors alike. We illustrate the Tanker unloading at our Dairy at Changue and the Bulk Reception Tank to which the milk is transferred.

It is a requirement of Ayr County Council, as it is of Hospital Boards and other public institutions, that the milk which we supply to Schools and Hospitals should be Pasteurised. With this new installation, our supplies are now automatically conveyed from the Bulk Reception Tank to the up-to-date Pasteurising Plant (illustrated in our 1961



Calendar) and then to the Filling Machine. There is complete, push-button control from start to finish and the milk is totally enclosed during the whole process.

We, of course, maintain separate reception, chilling, bottling and cartoning facilities for milk of our own production for distribution (untreated) by retail.

Just as a good Education depends on modern buildings and dedicated Teachers, an efficient Milk Service is based on up-to-date equipment, the use of modern techniques and a fully trained staff.

LEFT—The Road Tanker of Messrs. Houston Bros. delivering its load at Changue.





**Y.F.C. STOCK JUDGING AT CHANGUE**

Andrew Dunlop and Robert Callander of the Stewartry Club putting the finishing touches to their heifer at the South West Area Stock Dressing Elimination Contest for the 1964 Glasgow Dairy Show. Twenty teams took part in the Competition, eight of which were selected to go forward to the finals at Glasgow.

Ayr and DISTRICT CLUB held their Annual Stock Judging Competition at Bankend in July.

**EXPORTS**

Once again we have to record the success of Bankend bred bulls in New Zealand.

At the Annual Draft Sale of the Ardgowan Herd of Messrs. J. G. Donald & Son, at Featherstone, a son of BANKEND 'DE LUXE' (exported 1960) fetched £525, the highest price for an Ayrshire in New Zealand for many years; other two young bulls by the same sire each made £300.

At the 14th Annual Sale of the Ingleside Stud of Mrs. Zeala Morton, Seaward Downs the progeny of BANKEND 'DIADEM' (exported 1960) and BANKEND 'TRUE LINE' (exported 1955) were in keen demand and sold to a top of £270.

During the year Mrs. Morton took delivery of a third purchase, CHANGUE 'HALLMARK' and two Bankend heifers were exported, one to Czechoslovakia and one to Canada.

**STAFF SOCIAL CLUB**

Several new activities were introduced this year to cater for the special interests of members.

A Flower, Vegetable and Home Crafts Competition and Exhibition attracted a considerable entry and will now be an annual event. The fishers in the Club organised three successful outings, on the Rivers Clyde, Ayr and Lugar. A carpet bowling section has been formed and this, too, has proved very popular.

**EXTENSION OF BUSINESS**

The growth of our business in Ayr has been such that recently we had to introduce a third Round. Naturally, we welcome this indication that there is a growing demand for milk of high compositional and hygienic quality. The production of Certified Milk from our farms is being extended to meet this demand.



Cattle Dressing

**SHORTER WORKING WEEK**

There is no other so demanding as the day delivery schedule of the Milkman. To provide this kind of service and at the time allow for 'days-off' and holidays is not at all easy and sometimes it is inevitable that Roundsmen have long periods of constant duty.

This major problem in the industry, which is still under Government control, is being acknowledged and provision is being made for a shorter working week in common with other industries. In England the six-day week has been made effective by rotation of rest periods or by curtailment of deliveries. When it is introduced in Scotland, some time in 1965, it will be our aim to maintain the daily delivery service, but, whatever happens, we are sure our Roundsmen will have the co-operation of their customers in giving effect to this most desirable improvement in their working conditions.

**FINALLY . . .** Partners and Staff jointly take this opportunity to express their appreciation to all Customers for their support throughout the year and to assure them that it is their constant aim to provide a first-class service in every way.

**CALENDAR 1965**

JANUARY		FEBRUARY		MARCH		APRIL		MAY		JUNE	
Su.	3 10 17 24 31	Su.	7 14 21 28	Su.	7 14 21 28	Su.	4 11 18 25	Su.	2 9 16 23 30	Su.	6 13 20 27
Mn.	4 11 18 25	Mn.	1 8 15 22	Mn.	1 8 15 22 29	Mn.	5 12 19 26	Mn.	3 10 17 24 31	Mn.	7 14 21 28
Tu.	5 12 19 26	Tu.	2 9 16 23	Tu.	2 9 16 23 30	Tu.	6 13 20 27	Tu.	4 11 18 25	Tu.	1 8 15 22
Wd.	6 13 20 27	Wd.	3 10 17 24	Wd.	3 10 17 24 31	Wd.	7 14 21 28	Wd.	5 12 19 26	Wd.	2 9 16 23
Th.	7 14 21 28	Th.	4 11 18 25	Th.	4 11 18 25	Th.	1 8 15 22 29	Th.	6 13 20 27	Th.	3 10 17 24
Fr.	1 8 15 22 29	Fr.	5 12 19 26	Fr.	5 12 19 26	Fr.	2 9 16 23 30	Fr.	7 14 21 28	Fr.	4 11 18 25
Sa.	2 9 16 23 30	Sa.	6 13 20 27	Sa.	6 13 20 27	Sa.	3 10 17 24	Sa.	1 8 15 22 29	Sa.	5 12 19 26
JULY		AUGUST		SEPTEMBER		OCTOBER		NOVEMBER		DECEMBER	
Su.	4 11 18 25	Su.	1 8 15 22 29	Su.	5 12 19 26	Su.	3 10 17 24 31	Su.	7 14 21 28	Su.	5 12 19
Mn.	5 12 19 26	Mn.	2 9 16 23 30	Mn.	6 13 20 27	Mn.	4 11 18 25	Mn.	1 8 15 22 29	Mn.	6 13 20
Tu.	6 13 20 27	Tu.	3 10 17 24 31	Tu.	7 14 21 28	Tu.	5 12 19 26	Tu.	2 9 16 23 30	Tu.	7 14 21
Wd.	7 14 21 28	Wd.	4 11 18 25	Wd.	1 8 15 22 29	Wd.	6 13 20 27	Wd.	3 10 17 24	Wd.	1 8 15 22
Th.	1 8 15 22 29	Th.	5 12 19 26	Th.	2 9 16 23 30	Th.	7 14 21 28	Th.	4 11 18 25	Th.	2 9 16 23
Fr.	2 9 16 23 30	Fr.	6 13 20 27	Fr.	3 10 17 24	Fr.	1 8 15 22 29	Fr.	5 12 19 26	Fr.	3 10 17 24
Sa.	3 10 17 24 31	Sa.	7 14 21 28	Sa.	4 11 18 25	Sa.	2 9 16 23 30	Sa.	6 13 20 27	Sa.	4 11 18 25

**CALENDAR 1966**

JANUARY		FEBRUARY		MARCH		APRIL		MAY		JUNE	
Su.	2 9 16 23 30	Su.	6 13 20 27	Su.	6 13 20 27	Su.	3 10 17 24	Su.	1 8 15 22 29	Su.	5 12 19
Mn.	3 10 17 24 31	Mn.	7 14 21 28	Mn.	7 14 21 28	Mn.	4 11 18 25	Mn.	2 9 16 23 30	Mn.	6 13 20
Tu.	4 11 18 25	Tu.	1 8 15 22	Tu.	1 8 15 22 29	Tu.	5 12 19 26	Tu.	3 10 17 24 31	Tu.	7 14 21
Wd.	5 12 19 26	Wd.	2 9 16 23	Wd.	2 9 16 23 30	Wd.	6 13 20 27	Wd.	4 11 18 25	Wd.	1 8 15 22
Th.	6 13 20 27	Th.	3 10 17 24	Th.	3 10 17 24 31	Th.	7 14 21 28	Th.	5 12 19 26	Th.	2 9 16 23
Fr.	7 14 21 28	Fr.	4 11 18 25	Fr.	4 11 18 25	Fr.	1 8 15 22 29	Fr.	6 13 20 27	Fr.	3 10 17 24
Sa.	1 8 15 22 29	Sa.	5 12 19 26	Sa.	5 12 19 26	Sa.	2 9 16 23 30	Sa.	7 14 21 28	Sa.	4 11 18 25

**J. & J. M. STEVENSON**

PARTNERS: JOHN STEVENSON, M.B.E., JAMES M. STEVENSON

Registered Office: 42 AYR ROAD, CUMNOCK (Tel. 3255/6), Ayrshire

DAIRY FARMS: CHANGUE (Tel. 3027) BANKEND (Tel. 3101) CROPTHREAD (Tel. 2241) STOCK FARM: NEWFIELD (Tel. 2458)  
SHOP, BAKERY AND RESTAURANT AT THE SQUARE. UNDER THE SAME MANAGEMENT, THE ROYAL HOTEL (Tel. 2122 AND 3024)