

1964

Calendar

1964

TWENTY-SEVENTH ISSUE



PUPPY LOVE

R.M.S.

With the Compliments of

F. & F. M. Stevenson

. . . your dairy people



EARLY MORNING IN ALLOWAY

A familiar scene from the heart of the Burns' Country.

Stevenson's Dairy Farms
 CUMNOCK ————— Tel. 3255/6

JANUARY

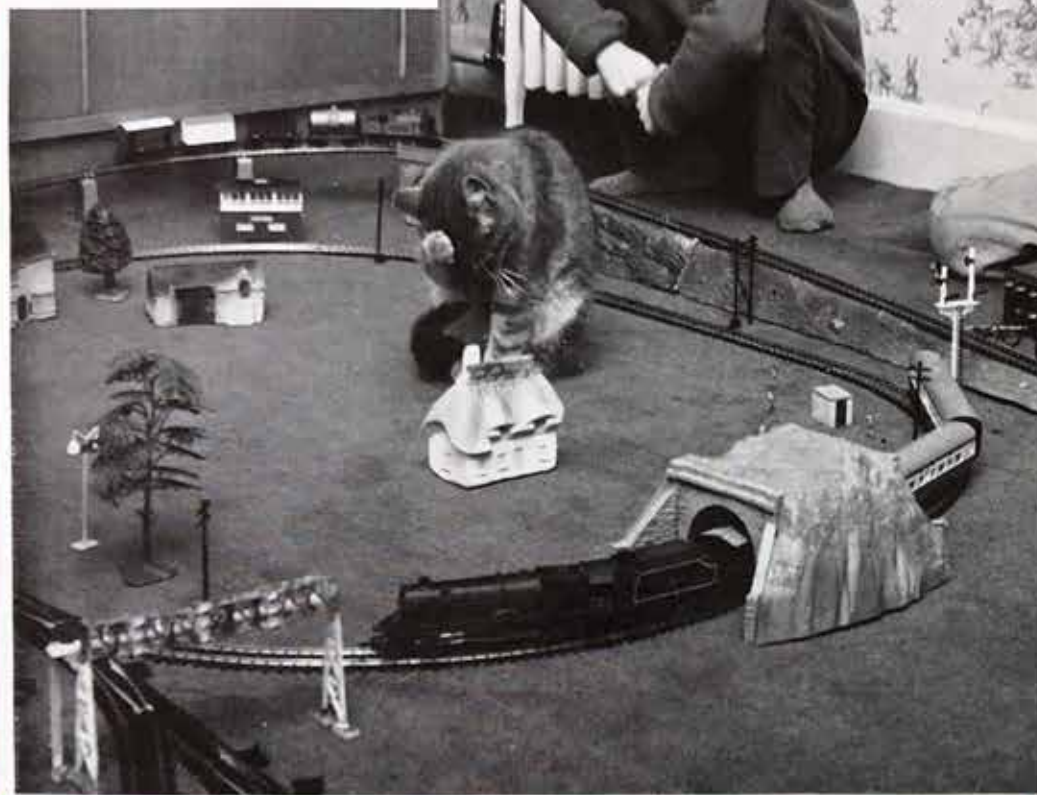
1964

FEBRUARY

SUN	-	5	12	19	26
MON	-	6	13	20	27
TUES	-	7	14	21	28
WED	1	8	15	22	29
THUR	2	9	16	23	30
FRI	3	10	17	24	31
SAT	4	11	18	25	-

SUN	-	2	9	16	23
MON	-	3	10	17	24
TUES	-	4	11	18	25
WED	-	5	12	19	26
THUR	-	6	13	20	27
FRI	-	7	14	21	28
SAT	1	8	15	22	29

WELL BRED, HEALTHY STOCK, ENSURE THE HIGH QUALITY OF OUR MILK SUPPLY



TWINKIE JOINS IN THE FUN

*Oh, had I but Aladdin's lamp,
Tho' only for a day,
I'd try to find a link to bind
The joys that pass away.*

CHARLES SWAIN.

Stevensons' Dairy Farms

CUMNOCK

Tel. 3255/6

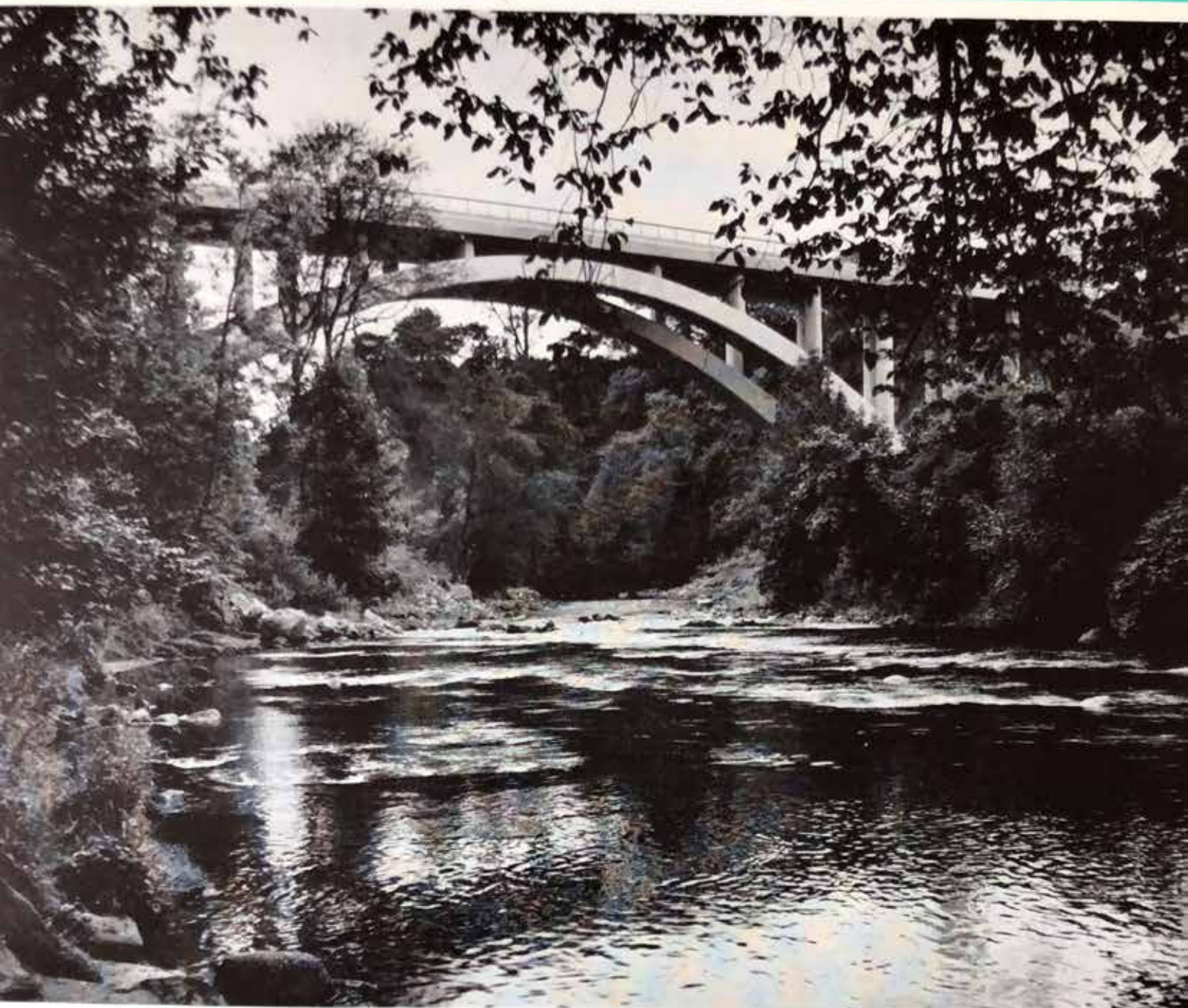
MARCH

SUN	1	8	15	22	29
MON	2	9	16	23	30
TUES	3	10	17	24	31
WED	4	11	18	25	-
THUR	5	12	19	26	-
FRI	6	13	20	27	-
SAT	7	14	21	28	-

1964

APRIL

SUN	-	5	12	19	26
MON	-	6	13	20	27
TUES	-	7	14	21	28
WED	1	8	15	22	29
THUR	2	9	16	23	30
FRI	3	10	17	24	-
SAT	4	11	18	25	-



*The New Howford Road Bridge at
Ballochmyle, Mauchline, taking the
A.76 over the River Ayr.*

*Ayr, gurgling, kiss'd her pebbled shore,
O'erhung with wild woods thickening green!
The fragrant birch and hawthorn hoar
Twin'd amorous round the captiv'd scene.*
ROBERT BURNS.

Stevenson's Dairy Farms

CUMNOCK

Tel. 3255/6

MAY

SUN	3	10	17	24	31
MON	4	11	18	25	-
TUES	5	12	19	26	-
WED	6	13	20	27	-
THUR	7	14	21	28	-
FRI	1	8	15	22	29
SAT	2	9	16	23	30

1964

JUNE

SUN	-	7	14	21	28
MON	1	8	15	22	29
TUES	2	9	16	23	30
WED	3	10	17	24	-
THUR	4	11	18	25	-
FRI	5	12	19	26	-
SAT	6	13	20	27	-



NEW CUMNOCK GALA DAY—
Miss Williamina McMillan,
Community Queen, 1963.

(Photo: Cumnock Chronicle)

To-day, whatever may annoy,
The word for me is Joy, just simple Joy.
J. K. BANGS.

Stevenson's Dairy Farms

CUMNOCK

Tel. 3255/6

JULY

SUN	-	5	12	19	26
MON	-	6	13	20	27
TUES	-	7	14	21	28
WED	1	8	15	22	29
THUR	2	9	16	23	30
FRI	3	10	17	24	31
SAT	4	11	18	25	-

1964

AUGUST

SUN	2	9	16	23	30
MON	3	10	17	24	31
TUES	4	11	18	25	-
WED	5	12	19	26	-
THUR	6	13	20	27	-
FRI	7	14	21	28	-
SAT	1	8	15	22	29

From our Bakery—Top Quality Confectionery, produced in ideal modern conditions by a fully qualified staff



HARVESTING AT BANKEND.

Stevenson's Dairy Farms
 CUMNOCK ————— Tel. 3255/6

*The husky, rusty rassel of the tassels of the corn,
 And the raspin' of the tangled leaves
 as golden as the morn:
 The stubble in the furrows—kindo' lonesome like,
 but still
 A preachin' sermons to us of the barns they
 grewed to fill.*
 JAMES WHITCOMB RILEY.

SEPTEMBER

1964

OCTOBER

SUN	-	6	13	20	27
MON	-	7	14	21	28
TUES	1	8	15	22	29
WED	2	9	16	23	30
THUR	3	10	17	24	-
FRI	4	11	18	25	-
SAT	5	12	19	26	-

SUN	-	4	11	18	25
MON	-	5	12	19	26
TUES	-	6	13	20	27
WED	-	7	14	21	28
THUR	1	8	15	22	29
FRI	2	9	16	23	30
SAT	3	10	17	24	31



WINTER IN WOODROAD PARK,
CUMNOCK.

Stevenson's Dairy Farms

CUMNOCK ————— Tel. 3255/6

*When winter stalks across the land,
And trees stand stark and bare,
The snow comes down on silken wings,
And gives them ermine cloaks to wear.*
HARRIET M. GILL.

NOVEMBER

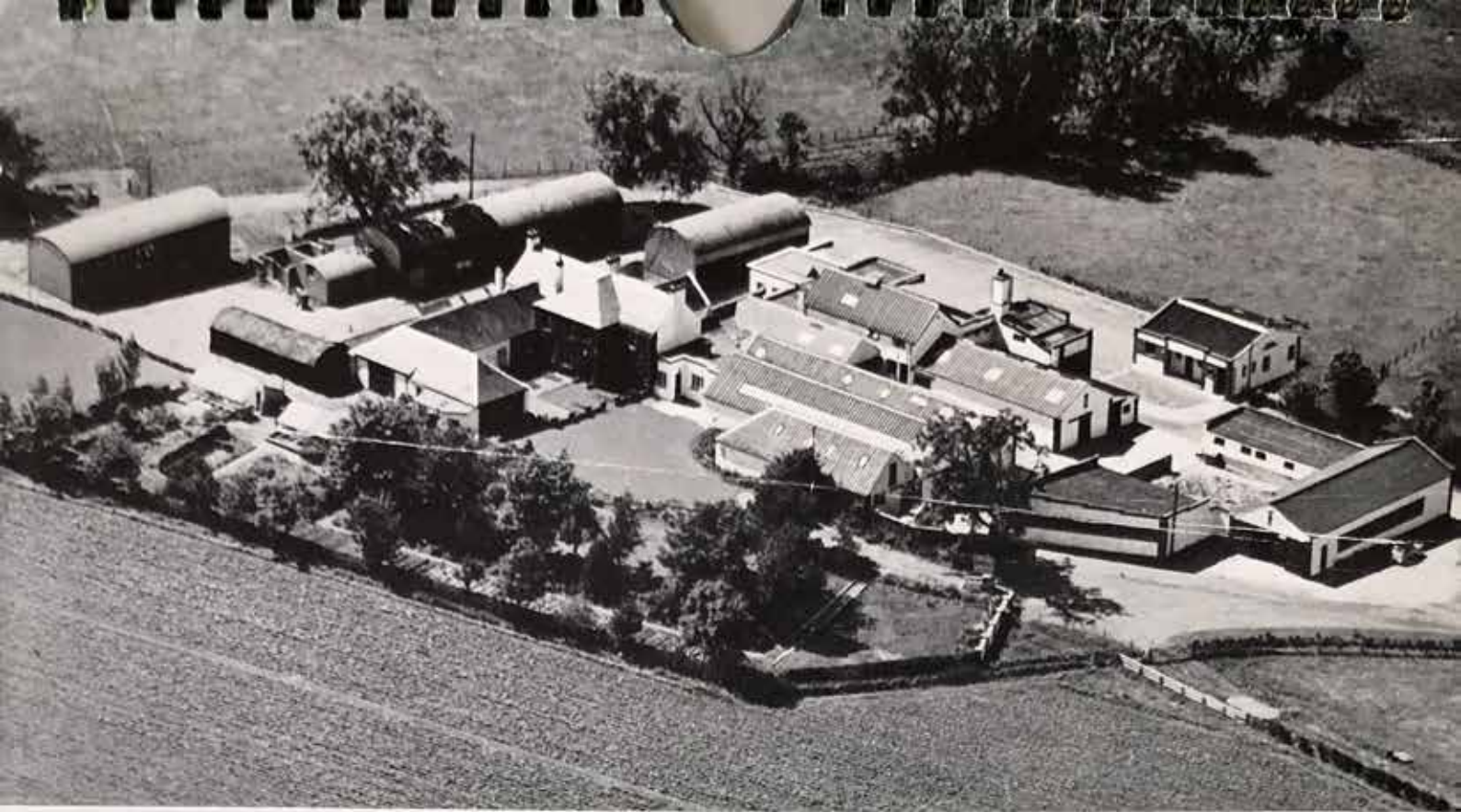
SUN	1	8	15	22	29
MON	2	9	16	23	30
TUES	3	10	17	24	-
WED	4	11	18	25	-
THUR	5	12	19	26	-
FRI	6	13	20	27	-
SAT	7	14	21	28	-

1964

DECEMBER

SUN	-	6	13	20	27
MON	-	7	14	21	28
TUES	1	8	15	22	29
WED	2	9	16	23	30
THUR	3	10	17	24	31
FRI	4	11	18	25	-
SAT	5	12	19	26	-

BOTTLES! BOTTLES! BOTTLES! ————— PLEASE RETURN THEM DAILY



Noteworthy

and bull boxes. A feature of the steading is the way in which all the stock, and the services required for feeding, milking, etc., are conveniently grouped. The corn, hay and tractor sheds are on the extreme left, providing shelter from the prevailing winds. Rearrangement and enlargement of the steading has been in progress since 1948 when a comprehensive plan was prepared with the aim of reducing the labour requirements of the holding and of facilitating development of the retail side of the business. To complete the plan, the mechanic's workshop and stores to the front and left of the house will, in due course, be re-sited.

CRAIG CHAMPIONSHIP TROPHY

Change 'Gold Label,' a yearling bull consigned by Mr. William Stevenson, Auchenflower, Ballantrae to Ayr Show and Sale, March 1963, won First Prize and the overall Championship (See Page Four). Our picture shows Mr. Stevenson accepting the Trophy from Mr. J. R. Madge, Secretary of the Ayrshire Cattle Society.

DANISH STUDENTS

The Royal Hotel served as headquarters for a party of Danish Agricultural Students on a visit to Scottish farms and educational centres. This six-day tour was arranged by the National Farmers' Union and our photograph was taken at a fare-well dinner given in the Hotel by the Ayr Executive of the Union of Students and

This aerial photograph of the house and steading at Change gives a good impression of the lay-out of the various buildings. In the centre foreground are the dairy byres, with grain and feed stores and calving boxes adjoining; to the right, the turnip shed, dungstead and loose-boxes; the garage for Rounds vehicles is on the extreme right; beyond the dairy byres is the young stock accommodation, including calf pens



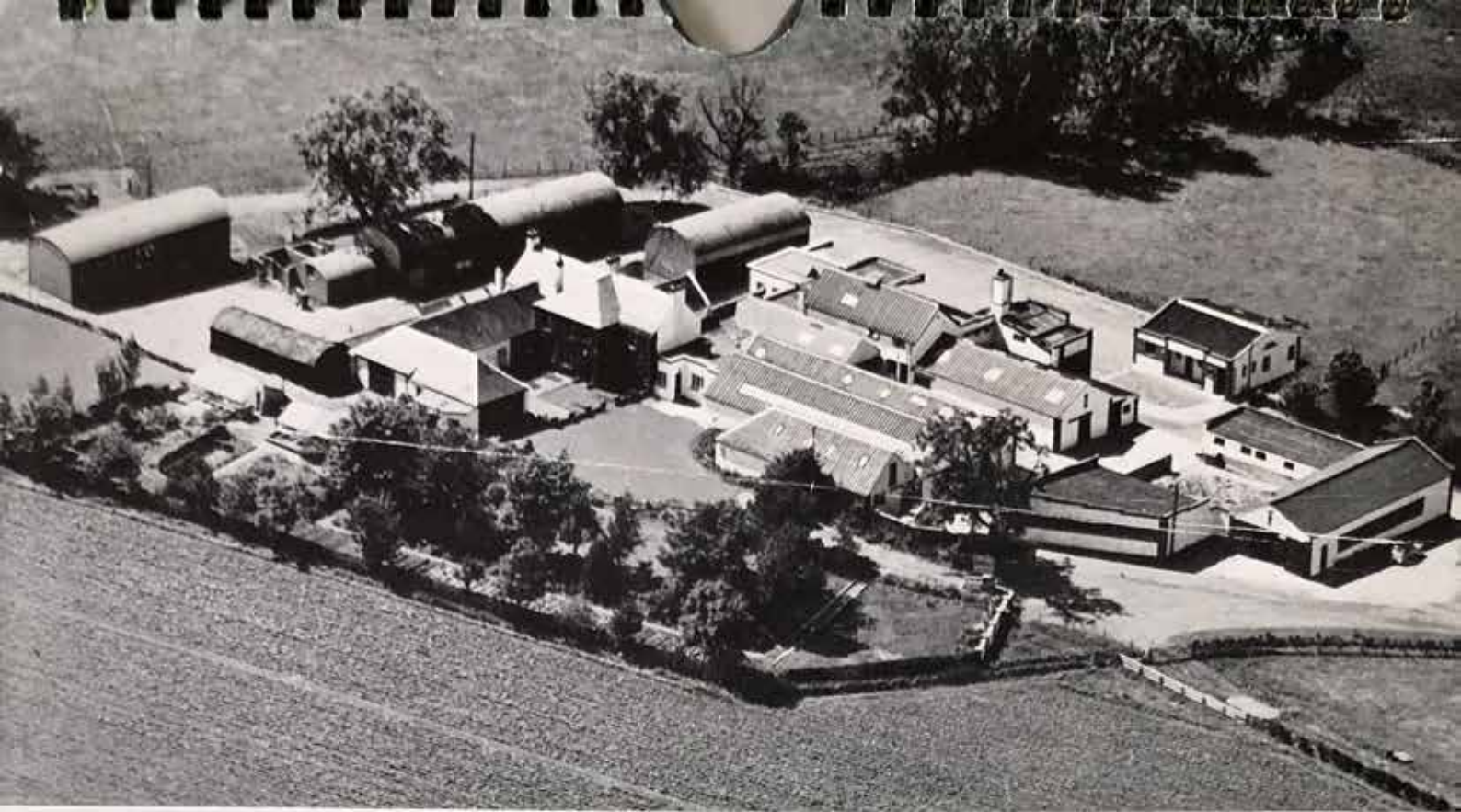
Danish Students—continued

for those who had been their hosts at the various outings. The group includes Dr. Petersen-Dalum, Vice-Principal of Naesgaard Agricultural College, the leader of the party, and Mr. David Sillars, President of Ayr Executive. A visit to Change was included in the tour.

NEW SHAFT AT BARONY

In last year's Calendar reference was made to the closure of Barony Colliery and the effect of this on the employment position in our district. After some

(Continued on Page Eleven)



Noteworthy

and bull boxes. A feature of the steading is the way in which all the stock, and the services required for feeding, milking, etc., are conveniently grouped. The corn, hay and tractor sheds are on the extreme left, providing shelter from the prevailing winds. Rearrangement and enlargement of the steading has been in progress since 1948 when a comprehensive plan was prepared with the aim of reducing the labour requirements of the holding and of facilitating development of the retail side of the business. To complete the plan, the mechanic's workshop and stores to the front and left of the house will, in due course, be re-sited.

CRAIG CHAMPIONSHIP TROPHY

Change 'Gold Label,' a yearling bull consigned by Mr. William Stevenson, Auchenflower, Ballantrae to Ayr Show and Sale, March 1963, won First Prize and the overall Championship (See Page Four). Our picture shows Mr. Stevenson accepting the Trophy from Mr. J. R. Madge, Secretary of the Ayrshire Cattle Society.

DANISH STUDENTS

The Royal Hotel served as headquarters for a party of Danish Agricultural Students on a visit to Scottish farms and educational centres. This six-day tour was arranged by the National Farmers' Union and our photograph was taken at a fare-well dinner given in the Hotel by the Ayr Executive of the Union of Students and

This aerial photograph of the house and steading at Change gives a good impression of the lay-out of the various buildings. In the centre foreground are the dairy byres, with grain and feed stores and calving boxes adjoining; to the right, the turnip shed, dungstead and loose-boxes; the garage for Rounds vehicles is on the extreme right; beyond the dairy byres is the young stock accommodation, including calf pens



Danish Students—continued

for those who had been their hosts at the various outings. The group includes Dr. Petersen-Dalum, Vice-Principal of Naesgaard Agricultural College, the leader of the party, and Mr. David Sillars, President of Ayr Executive. A visit to Change was included in the tour.

NEW SHAFT AT BARONY

In last year's Calendar reference was made to the closure of Barony Colliery and the effect of this on the employment position in our district. After some

(Continued on Page Eleven)

Show and Sale Successes - 1963

The Royal Highland, Ingliston First Prize, Veteran Class

(Cow having given 60,000 lbs. Milk)

BANKEND 'MYRTLE' (412000)

Dam—Bankend 'Missie 2nd' (158117)

Sire—Bankend 'Parade' (100892) 'App.'

Milk Records of 'Myrtle'—

10/3/57,	8739 lbs.	@ 4.27%	b.f. in	329 days
10/4/58,	9115 ..	@ 4.50%	309 ..
10/4/59,	9838 ..	@ 4.36%	323 ..
8/5/60,	10434 ..	@ 4.25%	290 ..
13/5/61,	11730 ..	@ 4.52%	283 ..
6/5/62,	11020 ..	@ 4.20%	323 ..

Calved again, 1/8/63

Note.—Bankend 'Myrtle' was First Prize Uncalved Cow at Ayr Show in 1960 and won the Championship in the Young Farmers' Classes at Ayr the following year. She is the Dam of Bankend 'Handsome,' for sale in the Spring, 1964. This young bull is by our senior stock bull, the Approved Sire, Changue 'Valiant.'



BANKEND 'MYRTLE'

Ayr Show and Sale, March 1963

The Craig Champ. Trophy

CHANGUE 'GOLD LABEL' (156030)

Dam—Changue 'Cinderella 4th' (554651)

Sire—Barweys 'Open Cast' (150820)

Milk Records of Dam—

10/9/59,	11008 lbs.	@ 4.26%	b.f. in	341 days
21/10/60,	14444 ..	@ 4.42%	384 ..
28/3/62,	11589 ..	@ 4.68%	314 ..
11/5/63,	8213 ..	@ 4.09%	200 ..

Still Milking

Note.—This bull was entered by Mr. William Stevenson from his newly established Herd at Auchenclocher, Ballantrae, Ayrshire, and was purchased by The Scottish Milk Marketing Board, Southbar Cattle Breeding Centre, Inchinnan.



CHANGUE 'GOLD LABEL'

Ayr Show and Sale, Nov., 1963

Highest Herd Average

THE BULL ILLUSTRATED (left) WAS ONE OF THE CONSIGNMENT OF EIGHT FROM OUR HERDS WHICH AVERAGED £365, THE HIGHEST OF THE SALE (FOR THE SECOND YEAR RUNNING).

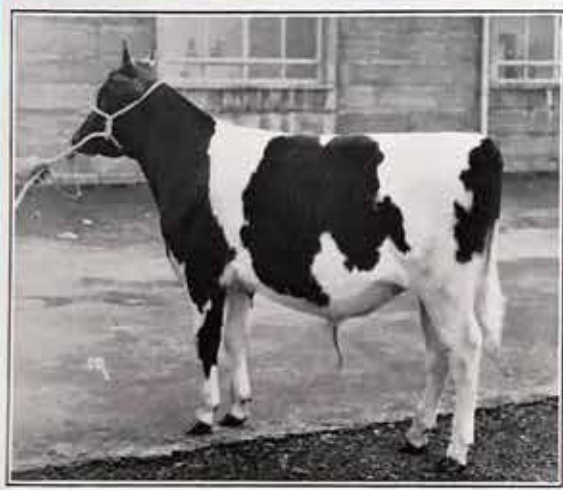
BANKEND 'GAY BOY' (157898)

Dam—Changue 'Cissie 8th' (288472)

Sire—Lessnessock 'Clan Emblem' (148999)

Note.—For details of the Dam, 'Cissie 8th' see Page Eight.

'Gay Boy' was purchased by Messrs. A. W. Montgomerie & Sons, Ltd., Lessnessock.



BANKEND 'GAY BOY'

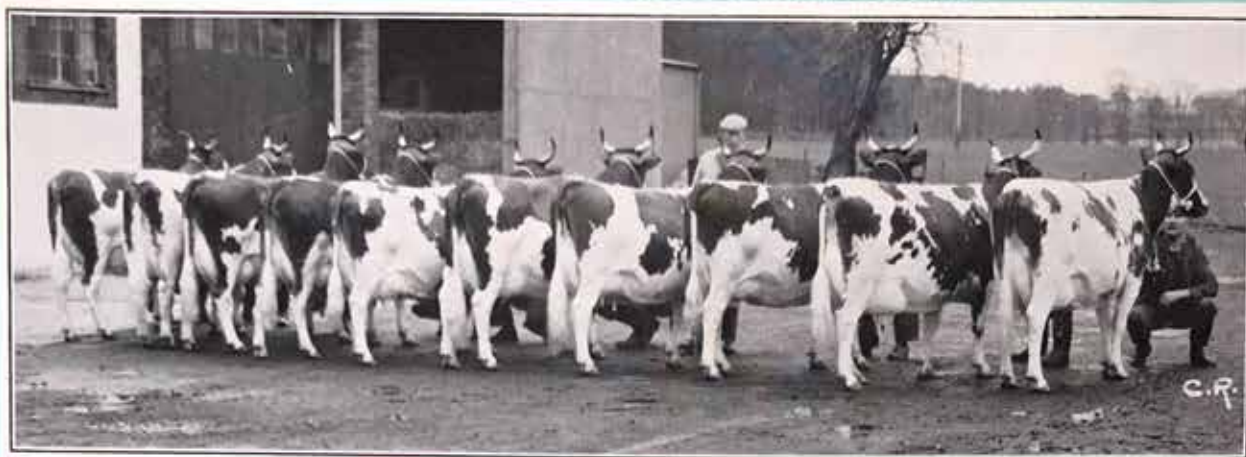
THE USUAL SELECTION OF YOUNG BULLS WILL BE OFFERED AT THE 1964 SALES

INSPECTION AND ENQUIRIES INVITED

Conformation - High Yields Compositional Quality

THE NATIONAL PROGENY COMPETITION FOR 1963

Sponsored by the Ayrshire Agricultural Association, in conjunction with Ayr Show
RESERVE TEAM FOR THE JACOB S. MURRAY TROPHY



TEN DAUGHTERS OF THE APPROVED SIRE, CHANGUE 'VALIANT' (135633)

Right to left—Changue 'Nita 9th' (640205), Cinderella 5th'' (652014), 'Sunrose' (663453), 'Alice 2nd' (640200), 'Nannette 2nd' (640206), 'Cream Pot 2nd' (621901), 'Petula 5th' (696187), 'Apple Blossom 8th' (685882), 'Profile 5th' (685887), 'Trim Lass 2nd' (652019).

THIS TEAM, AS HEIFERS, AVERAGED 10,640 LBS. MILK AT 4.40% B.F.

The Changue and Bankend Herds have a unique record of success in this exacting Competition. A Team of 10 Daughters of the Approved Sire, Bankend 'Parade' (100892), after having been Second in 1957 and Third in 1958, won First Place and the Jacob Murray Trophy in 1959. Members of a winning team are not eligible to compete again, but other 10 cows by the same Sire were placed Fourth in 1960, Sixth in 1961 and, again, Fourth in 1963, the same year in which the 'Valiant' Team was Second.

VALIANT IS BRED FROM THE 'CHOICE' FAMILY (See Page 8)

HIGH BUTTER FAT Plus GOOD SOLIDS Equals PREMIUM EARNING MILK

HERD AVERAGES FOR THE PAST FOURTEEN YEARS

Lactations (305 days) completed within the year

Year	Cows and Heifers	Average Yield Lbs.	Butter Fat %	Calving Index Days
1948	104	9840	4.11	386
1949	98	10185	4.14	411
1950	115	10760	4.13	416
1951	108	10869	4.19	429
1952	116	10592	4.14	420
1953	117	10909	4.17	406
1954	127	10762	4.14	402
1955	117	10623	4.07	409
1956	122	10779	4.05	409
1957	130	10433	4.15	413
1958	122	10060	4.18	416
1959	126	10554	4.16	411
1960	120	11361	4.18	406
1961	132	11369	4.20	417
1962	140	10923	4.15	401

Certified by Scottish Milk Records Association

Note.—Those yields are produced on high lying land ranging from 400 to 700 feet above sea level.

Over the years we have sought to establish in our Herds a potential for the production of milk of High Compositional Quality. The Milk Boards' Schemes for Payment on a Quality basis now add greater significance to this aspect of Breeding. The following table, which will be of interest to Breeders and Consumers alike, compares the results obtained in our Herds with the Averages for all Recorded Herds in Scotland.

1963 Month of Test	CHANGUE			CROFHEAD			BANKEND			SCOT. AV'AGE 1962-63		
	BF	SNF	Total Solids	BF	SNF	Total Solids	BF	SNF	Total Solids	BF	SNF	Total Solids
	%	%	%	%	%	%	%	%	%	%	%	%
JAN.	4.20	8.80	13.00	4.10	8.77	12.87	4.20	8.88	13.08	3.89	8.74	12.63
FEB.	4.20	8.73	12.93	4.10	8.87	12.97	4.10	8.77	12.87	3.87	8.73	12.60
MAR.	4.30	8.77	13.07	4.35	8.86	13.21	4.30	8.97	13.27	3.84	8.71	12.55
APRIL	4.30	8.67	12.97	4.50	8.94	13.44	4.50	9.04	13.54	3.81	8.68	12.49
MAY	4.50	8.69	13.19	5.00	8.90	13.90	4.30	8.82	13.12	3.77	8.75	12.52
MAY	4.20	8.83	13.03	4.20	8.93	13.13	4.30	9.05	13.35			
JUNE	3.90	8.91	12.81	4.10	8.87	12.97	4.00	8.95	12.95	3.71	8.77	12.48
JULY	4.20	8.70	12.90	4.00	8.73	12.73	4.30	8.67	12.97	3.82	8.72	12.54
AUG.	4.00	8.73	12.73	4.30	8.75	13.05	4.30	9.02	13.32	3.89	8.70	12.59
SEPT.	4.50	8.84	13.34	4.50	8.61	13.11	4.50	8.86	13.36	3.98	8.74	12.72
OCT.	4.45	8.85	13.30	4.40	8.77	13.17	4.55	8.97	13.52	4.04	8.76	12.80
OCT.	4.30	8.70	13.00	4.30	8.65	12.95	4.30	8.89	13.19			
NOV.	4.20	9.00	13.20	4.20	8.63	12.83	4.20	8.80	13.00	4.00	8.75	12.75
DEC.	4.20	8.82	13.02	4.20	8.78	12.98	4.25	8.85	13.10	3.92	8.73	12.65
Av'ges	4.24	8.79	13.03	4.30	8.79	13.09	4.29	8.89	13.18	3.88	8.73	12.61

The information on our own Herds is based on the Bulk Sample Tests taken by Official Recorders of the Scottish Milk Records Association. The Scottish Averages are provided by the Livestock Records Bureau.

All Bulls offered for sale from the Changue and Bankend Herds are out of Dams from Selected and Proven Cow Families

. . . The 'Choice' Family . . .

THE 'CHOICE' FAMILY, WHICH INCLUDES THE 'CLOVERS,' 'CISSIES,' 'CINDERELLAS' AND 'COLUMBINES,' HAS PROVED TO BE ONE OF THE MOST CONSISTENT COW FAMILIES IN THE HERDS. CHARACTERISTICS SUCH AS CONFORMATION, HIGH YIELDS, GOOD BUTTER FAT AND LONGEVITY HAVE PERSISTED DOWN THROUGH THE GENERATIONS.

CHANGUE 'CHOICE 7th' (63618)

This Approved Dam, whose first six daughters averaged 11789 lbs. Milk (M.E.) at 4.38% Butter Fat, was an outstanding representative of the Family. She was in the Changue Herd for 19 years, producing 15 calves in 16 years and yielding 147,861 lbs. Milk at 4.40% Butter Fat. Her daily yield rarely exceeded 60 lbs. and this feature — a substantial yield, spread evenly over the lactation — is a predominant characteristic of the 'Choice' Family, contributing to Regular Calving and a long Working Life.

Photographed in November, 1959: her 18th Year.



CHANGUE 'CHOICE 7th'

CHANGUE 'CISSIE 6th' (236684)

(Born 27th February, 1951)

MILK RECORDS—

22/11/53,	12472 lbs.	@	4.35%	b.f.	in	315 days
13/1/55,	11766	..	@	4.63%	..	280 ..
1/3/56,	10060	..	@	4.27%	..	252 ..
9/4/57,	12164	..	@	4.83%	..	262 ..
24/4/58,	10951	..	@	4.82%	..	278 ..
15/4/59,	11715	..	@	4.42%	..	282 ..
5/10/60,	14085	..	@	4.57%	..	371 ..
8/12/61,	12733	..	@	4.22%	..	289 ..
9/2/63,	12021	..	@	5.14%	..	251 ..

Still Milking — 5/10/63

'Cissie 6th' is in the Changue Herd.



CHANGUE 'CISSIE 6th'

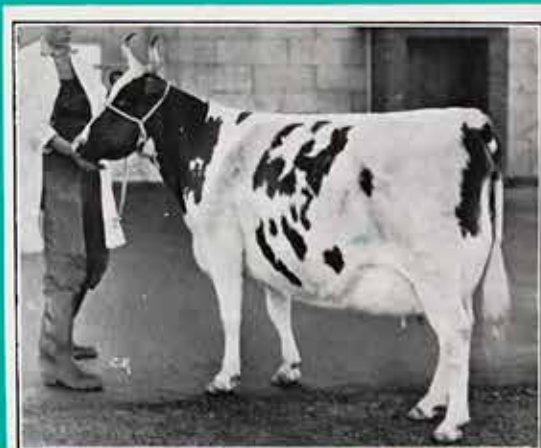
CHANGUE 'CISSIE 8th' (288472)

(Born 28th April, 1952)

MILK RECORDS—

8/9/54,	10365 lbs.	@	4.40%	b.f.	in	345 days
3/11/55,	11535	..	@	4.57%	..	336 ..
28/1/57,	12304	..	@	5.06%	..	331 ..
23/4/58,	10665	..	@	4.72%	..	339 ..
8/7/59,	10689	..	@	5.08%	..	311 ..
13/8/60,	10491	..	@	4.99%	..	322 ..
13/9/61,	12248	..	@	4.78%	..	348 ..
31/12/62,	11599	..	@	4.53%	..	315 ..

'Cissie 8th' is in the Bankend Herd



CHANGUE 'CISSIE 8th'

CHANGUE 'CISSIE 13th' (597424)

(Born 26th August, 1957)

MILK RECORDS—

11/6/60,	11797 lbs.	@	4.71%	b.f.	in	381 days
23/8/62,	13534	..	@	4.75%	..	343 ..
10/10/63,						Calved again

'Cissie 13th' is now in the Auchenflower Herd.

THREE FULL SISTERS

Illustrated above are three daughters of 'Choice 7th' by the Approved Sire, Lessnessnock 'Pendragon.'



CHANGUE 'CISSIE 13th'

THE CHANGUE and BANKEND HERDS for CONSISTENCY...TYPE...LONGEVITY

New Shaft at Barony—continued

months of uncertainty the news that Barony was to be re-opened was warmly welcomed throughout the community. Sinking of the new 1,600 feet shaft (diameter 18 feet), which will take eighteen months, has already started and our picture shows the stage reached at the end of November, 1963, after the contractors had been on the job only a few weeks.

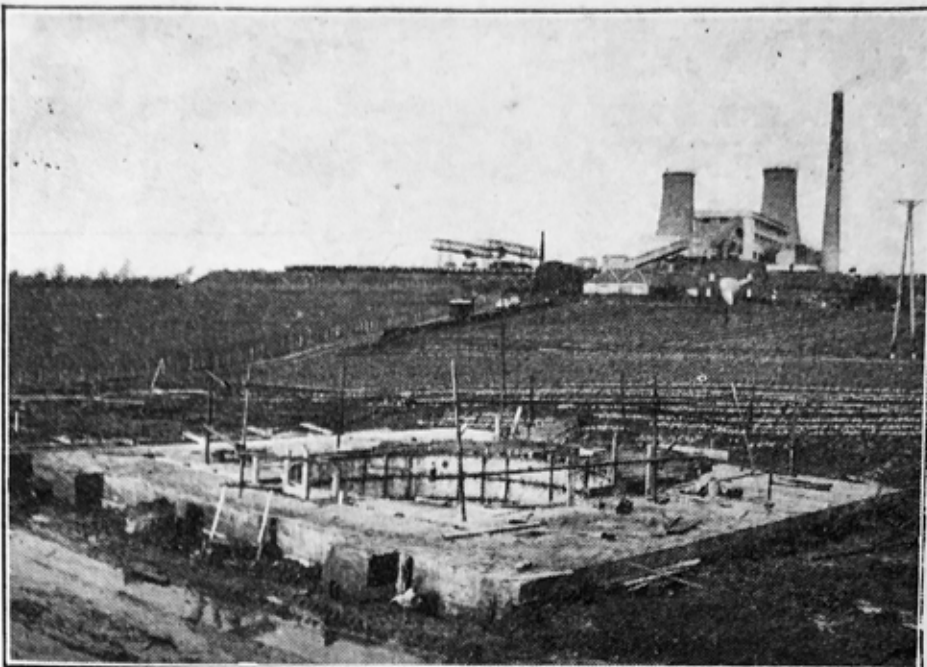
ANNUAL STAFF DINNER DANCE

This year we were honoured to have with us as guest speaker, Provost J. K. H. McTurk, J.P., of Cumnock, and Mrs. McTurk. The Provost took as his theme the work of the Council in developing and expanding the Burgh, not only, he said, with a view to providing attractive conditions for incoming industries, but also in support of the efforts of local traders. Mr. McTurk's survey of the development plans, and his expression of faith in the future of Cumnock, carried with it the assurance of increasing opportunities for trade and employment and was warmly welcomed by all present.

CONGRATULATIONS

Recently we learned with pleasure that the highest average price for Pedigree Stock in New Zealand in 1963 had been achieved by Mrs. Zeala Morton of Edendale, South Island, N.Z. Mrs. Morton has been using Bankend bred Sires in her Ingleside Herd of Pedigree Ayrshires since 1955, first with Bankend 'True Line,' then with Bankend 'Diadem' sent out in September, 1960. The progeny of both have gained a formidable record of successes at Local and National Shows and at the Sales held annually by Mrs. Morton. We have been asked to select yet another Bull for the Ingleside Herd.

It is with pleasure that we offer Mrs. Morton our congratulations and best wishes for her continued success.



THE PEDIGREE HERDS The Stock Pages of this Calendar confirm a continuing and increasing interest in the progeny of our Ayrshire Herds at annual Shows and Sales. The same trend is reflected in the enquiries received from home and overseas breeders and in private sales. May we wish all buyers success with their purchases.

VISITORS Space does not permit mention of all our visitors during the past year. **YOUNG FARMERS' CLUBS** - In all we had about 400 Young Farmers, including parties from the Kilmaurs, Atholl and Glaisnock Clubs. The Mauchline Club held their annual Stock Judging competition at Changue and the S.W. Area came to us in June for the International Dairy Cattle Stock Judging Elimination Contest and again in December for the Cattle Dressing Elimination Contest. **STUDENTS** - In May we had a Study Group of 50 Teachers, led by Professor Miller of Glasgow University and Dr. McQueen of the Scottish Milk Marketing Board, and in October, 26 Overseas Students, brought by the British Council.

FINALLY . . . In last year's Calendar we mentioned the extension of our business to Ayr and Alloway. Both here and elsewhere, the continuing growth of our retail service, with its emphasis on Quality Supplies, is a matter of encouragement to ourselves and our Staff and we take this opportunity to **THANK YOU FOR YOUR CUSTOM.**

CALENDAR 1964

JANUARY	FEBRUARY	MARCH	APRIL	MAY	JUNE
Su. - 5 12 19 26	Su. - 2 9 16 23 -	Su. - 1 8 15 22 29	Su. - 5 12 19 26	Su. - 3 10 17 24 31	Su. - 7 14 21 28
Mn. - 6 13 20 27	Mn. - 3 10 17 24 -	Mn. - 2 9 16 23 30	Mn. - 6 13 20 27	Mn. - 4 11 18 25 -	Mn. - 1 8 15 22 29
Tu. - 7 14 21 28	Tu. - 4 11 18 25 -	Tu. - 3 10 17 24 31	Tu. - 7 14 21 28	Tu. - 5 12 19 26 -	Tu. - 2 9 16 23 30
Wd. - 1 8 15 22 29	Wd. - 5 12 19 26 -	Wd. - 4 11 18 25 -	Wd. - 1 8 15 22 29	Wd. - 6 13 20 27 -	Wd. - 3 10 17 24 -
Th. - 2 9 16 23 30	Th. - 6 13 20 27 -	Th. - 5 12 19 26 -	Th. - 2 9 16 23 30	Th. - 7 14 21 28 -	Th. - 4 11 18 25 -
Fr. - 3 10 17 24 31	Fr. - 7 14 21 28 -	Fr. - 6 13 20 27 -	Fr. - 3 10 17 24 -	Fr. - 1 8 15 22 29 -	Fr. - 5 12 19 26 -
Sa. - 4 11 18 25 -	Sa. - 1 8 15 22 29 -	Sa. - 7 14 21 28 -	Sa. - 4 11 18 25 -	Sa. - 2 9 16 23 30 -	Sa. - 6 13 20 27 -

JULY	AUGUST	SEPTEMBER	OCTOBER	NOVEMBER	DECEMBER
Su. - 5 12 19 26	Su. - 2 9 16 23 30	Su. - 6 13 20 27	Su. - 4 11 18 25	Su. - 1 8 15 22 29	Su. - 6 13 20 27
Mn. - 6 13 20 27	Mn. - 3 10 17 24 31	Mn. - 7 14 21 28	Mn. - 5 12 19 26	Mn. - 2 9 16 23 30	Mn. - 7 14 21 28
Tu. - 7 14 21 28	Tu. - 4 11 18 25 -	Tu. - 1 8 15 22 29	Tu. - 6 13 20 27	Tu. - 3 10 17 24 -	Tu. - 1 8 15 22 29
Wd. - 1 8 15 22 29	Wd. - 5 12 19 26 -	Wd. - 2 9 16 23 30	Wd. - 7 14 21 28	Wd. - 4 11 18 25 -	Wd. - 2 9 16 23 30
Th. - 2 9 16 23 30	Th. - 6 13 20 27 -	Th. - 3 10 17 24 -	Th. - 1 8 15 22 29	Th. - 5 12 19 26 -	Th. - 3 10 17 24 31
Fr. - 3 10 17 24 31	Fr. - 7 14 21 28 -	Fr. - 4 11 18 25 -	Fr. - 2 9 16 23 30	Fr. - 6 13 20 27 -	Fr. - 4 11 18 25 -
Sa. - 4 11 18 25 -	Sa. - 1 8 15 22 29 -	Sa. - 5 12 19 26 -	Sa. - 3 10 17 24 31	Sa. - 7 14 21 28 -	Sa. - 5 12 19 26 -

CALENDAR 1965

JANUARY	FEBRUARY	MARCH	APRIL	MAY	JUNE
Su. - 3 10 17 24 31	Su. - 7 14 21 28	Su. - 7 14 21 28	Su. - 4 11 18 25	Su. - 2 9 16 23 30	Su. - 6 13 20 27
Mn. - 4 11 18 25 -	Mn. - 1 8 15 22 -	Mn. - 1 8 15 22 29	Mn. - 5 12 19 26	Mn. - 3 10 17 24 31	Mn. - 7 14 21 28
Tu. - 5 12 19 26 -	Tu. - 2 9 16 23 -	Tu. - 2 9 16 23 30	Tu. - 6 13 20 27	Tu. - 4 11 18 25 -	Tu. - 1 8 15 22 29
Wd. - 6 13 20 27 -	Wd. - 3 10 17 24 -	Wd. - 3 10 17 24 31	Wd. - 7 14 21 28	Wd. - 5 12 19 26 -	Wd. - 2 9 16 23 30
Th. - 7 14 21 28 -	Th. - 4 11 18 25 -	Th. - 4 11 18 25 -	Th. - 1 8 15 22 29	Th. - 6 13 20 27 -	Th. - 3 10 17 24 -
Fr. - 1 8 15 22 29 -	Fr. - 5 12 19 26 -	Fr. - 5 12 19 26 -	Fr. - 2 9 16 23 30	Fr. - 7 14 21 28 -	Fr. - 4 11 18 25 -
Sa. - 2 9 16 23 30 -	Sa. - 6 13 20 27 -	Sa. - 6 13 20 27 -	Sa. - 3 10 17 24 -	Sa. - 1 8 15 22 29 -	Sa. - 5 12 19 26 -

J. & J. M. STEVENSON

PARTNERS: JOHN STEVENSON, M.B.E., JAMES M. STEVENSON

Registered Office: 42 AYR ROAD, CUMNOCK (Tel. 3255/6), Ayrshire

DAIRY FARMS: CHANGUE (Tel. 3027) BANKEND (Tel. 3101) CROFTHEAD (Tel. 2241) STOCK FARM: NEWFIELD (Tel. 2458)
SHOP, BAKERY AND RESTAURANT AT THE SQUARE. UNDER THE SAME MANAGEMENT, THE ROYAL HOTEL (Tel. 2122 and 3024)