

1962

Calendar

1962

TWENTY-FIFTH ISSUE

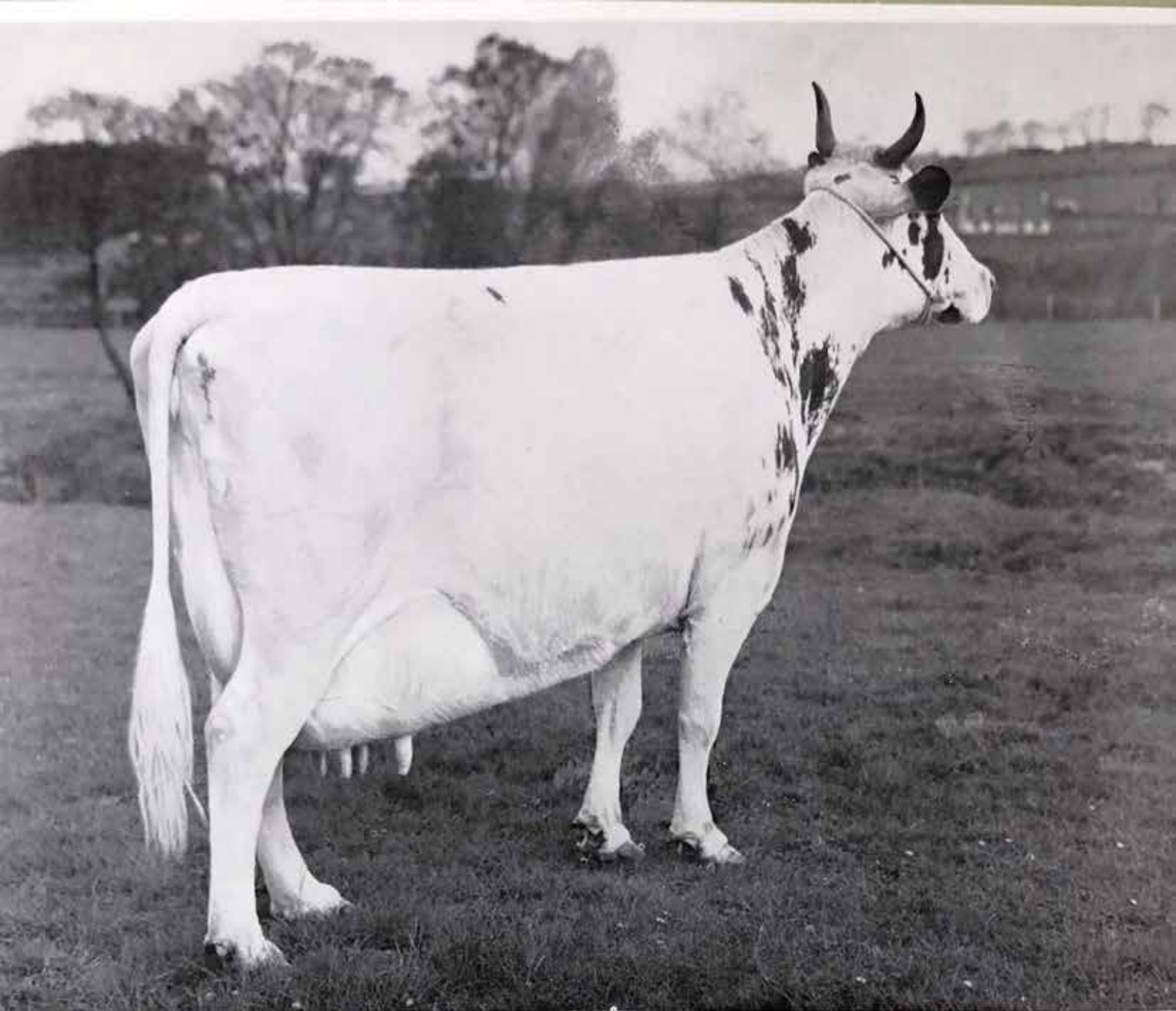


THE BIRTHDAY CAKE

With the Compliments of . . .

J., J. & W. Stevenson

. . . your dairy people



PRIDE OF THE HERD

BANKEND 'WHITE ROSE 3rd'
Bred and owned by J., J. & W. Stevenson.

Stevenson's Dairy Farms
CUMNOCK ————— Tel. 3255/6

JANUARY

1962

FEBRUARY

SUN	-	7	14	21	28
MON	1	8	15	22	29
TUES	2	9	16	23	30
WED	3	10	17	24	31
THUR	4	11	18	25	-
FRI	5	12	19	26	-
SAT	6	13	20	27	-

SUN	-	4	11	18	25
MON	-	5	12	19	26
TUES	-	6	13	20	27
WED	-	7	14	21	28
THUR	1	8	15	22	-
FRI	2	9	16	23	-
SAT	3	10	17	24	-

WELL BRED, HEALTHY STOCK, ENSURE THE HIGH QUALITY OF OUR MILK SUPPLY



CREOCH LOCH, NEW CUMNOCK
 (Photo: Cumnock Chronicle)

*"Where essential silence
 cheers and blesses"*
 R.L.S.

Stevenson's Dairy Farms
 CUMNOCK ————— Tel. 3255/6

MARCH

1962

APRIL

SUN	-	4	11	18	25
MON	-	5	12	19	26
TUES	-	6	13	20	27
WED	-	7	14	21	28
THUR	1	8	15	22	29
FRI	2	9	16	23	30
SAT	3	10	17	24	31

SUN	1	8	15	22	29
MON	2	9	16	23	30
TUES	3	10	17	24	-
WED	4	11	18	25	-
THUR	5	12	19	26	-
FRI	6	13	20	27	-
SAT	7	14	21	28	-

AYE READY—YOU MAY VISIT OUR DAIRY AT CHANGUE AT ANY TIME



PLAY TIME . . . D.W.S.

Stevensons' Dairy Farms
CUMNOCK — Tel. 3255/6

*"In books, or work, or healthful play,
Let my first years be past."
ISAAC WATTS.*

MAY

1962

JUNE

SUN	-	6	13	20	27
MON	-	7	14	21	28
TUES	1	8	15	22	29
WED	2	9	16	23	30
THUR	3	10	17	24	31
FRI	4	11	18	25	-
SAT	5	12	19	26	-

SUN	-	3	10	17	24
MON	-	4	11	18	25
TUES	-	5	12	19	26
WED	-	6	13	20	27
THUR	-	7	14	21	28
FRI	1	8	15	22	29
SAT	2	9	16	23	30

REAL DAIRY CREAM — Place an order with your Roundsman for — REAL DAIRY CREAM



GLENBUCK LOCH, MUIRKIRK

Stevenson's Dairy Farms

CUMNOCK

Tel. 3255/6

*"... And silent trees stoop down to trees.
And there I saw a white swan make
Another white swan in the lake;
And, breast to breast, both motionless,
They waited for the wind's caress
And all the water was at ease."
A. A. MILNE.*

JULY

1962

AUGUST

SUN	1	8	15	22	29
MON	2	9	16	23	30
TUES	3	10	17	24	31
WED	4	11	18	25	-
THUR	5	12	19	26	-
FRI	6	13	20	27	-
SAT	7	14	21	28	-

SUN	-	5	12	19	26
MON	-	6	13	20	27
TUES	-	7	14	21	28
WED	1	8	15	22	29
THUR	2	9	16	23	30
FRI	3	10	17	24	31
SAT	4	11	18	25	-

From our Bakery—Top Quality Confectionery, produced in ideal modern conditions by a fully qualified staff



HILLHEAD, COYLTON

Stevenson's Dairy Farms
CUMNOCK ————— Tel. 3255/6

*"Welcome to you, rich Autumn days,
Ere come the cold leaf-picking winds."*
W. H. DAVIES.

SEPTEMBER

1962

OCTOBER

SUN	2	9	16	23	30
MON	3	10	17	24	-
TUES	4	11	18	25	-
WED	5	12	19	26	-
THUR	6	13	20	27	-
FRI	7	14	21	28	-
SAT	1	8	15	22	29

SUN	-	7	14	21	28
MON	1	8	15	22	29
TUES	2	9	16	23	30
WED	3	10	17	24	31
THUR	4	11	18	25	-
FRI	5	12	19	26	-
SAT	6	13	20	27	-

THE ROYAL HOTEL FOR WEDDING RECEPTIONS, PARTIES AND FUNCTIONS OF ALL KINDS



THE EGLINTON HUNT
AT BALLOCHMYLE

*The dusky night rides down the sky
And ushers in the morn;
The hounds all join in glorious cry,
The huntsman winds his horn;*
HENRY FIELDING.

Stevenson's Dairy Farms
CUMNOCK ————— Tel. 3255/6

NOVEMBER

1962

DECEMBER

SUN	-	4	11	18	25
MON	-	5	12	19	26
TUES	-	6	13	20	27
WED	-	7	14	21	28
THUR	1	8	15	22	29
FRI	2	9	16	23	30
SAT	3	10	17	24	-

SUN	2	9	16	23	30
MON	3	10	17	24	31
TUES	4	11	18	25	-
WED	5	12	19	26	-
THUR	6	13	20	27	-
FRI	7	14	21	28	-
SAT	1	8	15	22	29

BOTTLES! BOTTLES! BOTTLES! ————— PLEASE RETURN THEM DAILY

Silver Jubilee Celebrations

Photos by Cannon & Chronicle



ABOVE—Miss Mary McHoull (21 years' service) cuts the Birthday Cake.



ABOVE—Mr. Alex. McCulloch (21 years' service) accepts his Gift Cheque from Mr. William Stevenson.

BELOW—A group of the Staff, with Mr. and Mrs. John Stevenson, Mr. and Mrs. William Stevenson, Mr. David Stevenson, Garrallan and Murray Stevenson, Bankend, representing his parents, Mr. and Mrs. James Stevenson, who were on a business trip to Canada (see Noteworthy) and who cabled their best wishes for a happy evening.

TO CELEBRATE THE 25th ANNIVERSARY of the Retail side of our business, members of staff were entertained to Dinner, followed by a Dance, in The Royal Hotel on Wednesday, 8th November, 1961.

After Dinner, the principal toast was proposed by Mr. McCulloch, Dairy Manager, and replied to, on behalf of the Partners, by Mr. John Stevenson, who in the course of his remarks paid tribute to all members of staff, past and present, who had contributed to the firm's progress during the preceding 25 years.

To mark the occasion the sum of £500 was disbursed amongst the staff on the basis of service and responsibility. Mr. William Stevenson, made the presentations, in the form of Gift Cheques.

The thanks and appreciation of the staff were expressed by Mr. Andrew McCartney, Rounds Foreman (23 years' service).



CHANGUE and BANKEND

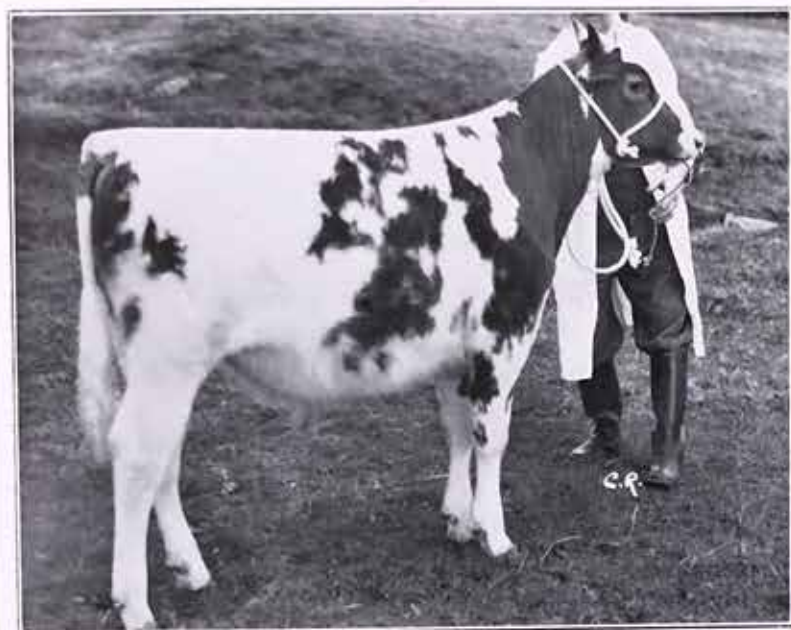
Ayrshire Herds

ESTABLISHED
AT CHANGUE 1870

ONE OF THE OLDEST 'AYRSHIRE' STOCKS

MILK RECORDED
SINCE 1910

AYR BULL SALE SUCCESSES IN 1961



BANKEND 'ECLIPSE'

TOP PRICE IN MARCH

BANKEND 'ECLIPSE' (150874)

Dam— Bankend 'White Rose 3rd' (207275) 'App.'

Sire—Bankend 'Welcome' (139028).

'White Rose 3rd' is a Member of the 100,000 lbs. Club and an Approved Dam (see Noteworthy).

AT AYR SALE, MARCH, 1961, 'ECLIPSE' WAS TOP PRICE BULL (EQUAL) AND WAS PURCHASED BY MESSRS. LAWRIE FARMS LTD., MILNATHORT, FIFE.

TOP PRICE IN NOVEMBER

BANKEND 'EMERALD' (152245)

Dam—Bankend 'Amy 4th' (492432)

Sire—Bankend 'Signet' (122716)

Milk Records of Dam—

Calved—

3/7/58, 10077 lbs. @ 3.96% b.f. in 293 days

14/7/59, 14711 ,, @ 4.35% b.f. ,, 388 ,,

20/11/60, 16184 ,, @ 4.36% b.f. ,, 361 ,,

AT AYR SALE, NOVEMBER, 1961, 'EMERALD' WAS TOP PRICE BULL AND WAS PURCHASED BY MR. DAVID ARGO, UDNY, ABERDEENSHIRE.

Note—This was the third consecutive occasion on which a Bankend bull had fetched the top price at the November Sales.



BANKEND 'EMERALD'

J. & W.
STEVENSON

CUMNOCK

AYRSHIRE

Telephones

CHANGUE
CROFTHEAD
BANKEND

Cumnock
" "

3255-6
2241
3101

CHANGUE and BANKEND

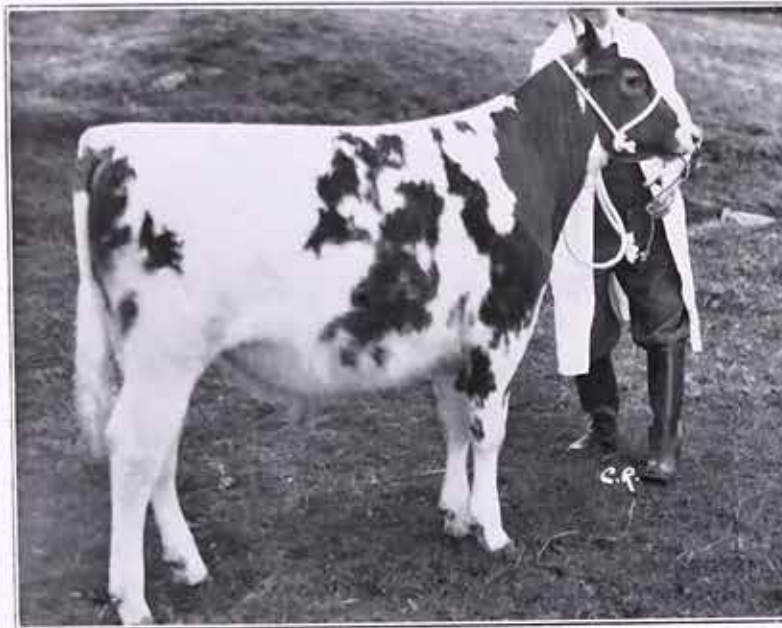
Ayrshire Herds

ESTABLISHED
AT CHANGUE 1870

ONE OF THE OLDEST 'AYRSHIRE' STOCKS

MILK RECORDED
SINCE 1910

AYR BULL SALE SUCCESSES IN 1961



BANKEND 'ECLIPSE'

TOP PRICE IN MARCH

BANKEND 'ECLIPSE' (150874)

Dam— Bankend 'White Rose 3rd' (207275) 'App.'

Sire—Bankend 'Welcome' (139028).

'White Rose 3rd' is a Member of the 100,000 lbs. Club and an Approved Dam (see Noteworthy).

AT AYR SALE, MARCH, 1961, 'ECLIPSE' WAS TOP PRICE BULL (EQUAL) AND WAS PURCHASED BY MESSRS. LAWRIE FARMS LTD., MILNATHORT, FIFE.

TOP PRICE IN NOVEMBER

BANKEND 'EMERALD' (152245)

Dam—Bankend 'Amy 4th' (492432)

Sire—Bankend 'Signet' (122716)

Milk Records of Dam—

Calved—

3/7/58, 10077 lbs. @ 3.96% b.f. in 293 days

14/7/59, 14711 ,, @ 4.35% b.f. ,, 388 ,,

20/11/60, 16184 ,, @ 4.36% b.f. ,, 361 ,,

AT AYR SALE, NOVEMBER, 1961, 'EMERALD' WAS TOP PRICE BULL AND WAS PURCHASED BY MR. DAVID ARGO, UDNY, ABERDEENSHIRE.

Note—This was the third consecutive occasion on which a Bankend bull had fetched the top price at the November Sales.



BANKEND 'EMERALD'

J. & W. STEVENSON
CUMNOCK
AYRSHIRE

Telephones

CHANGUE
CROFTHEAD
BANKEND

Cumnock	3255-6
"	2241
"	3101

By the way . . .

AYR SHOW, 1961

BANKEND 'MYRTLE' (412000)

Dam—Bankend 'Missie 2nd' (158117)

Sire—Bankend 'Parade' (100892) 'App.'

Milk Record of 'Myrtle'—

Calved—

10/3/57,	8739 lbs.	@ 4.27%	b.f. in 329 days
10/4/58,	9115 ..	@ 4.50%	b.f. ,, 309 ..
10/4/59,	9838 ..	@ 4.36%	b.f. ,, 323 ..
8/5/60,	10434 ..	@ 4.85%	b.f. ,, 290 ..
13/5/61,	10293 ..	@ 4.56%	b.f. ,, 220 .. (unfinished)



BANKEND 'MYRTLE'

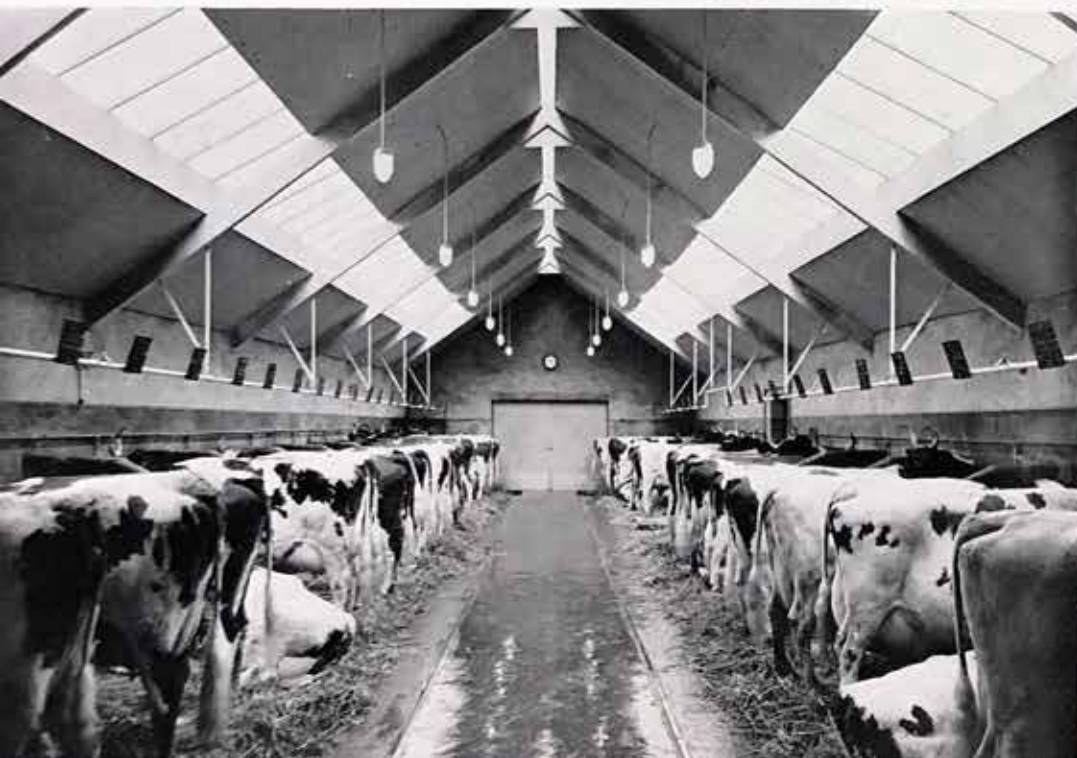
'MYRTLE' WAS BREED CHAMPION, YOUNG FARMERS' SECTION, AT AYR SHOW, 1961 (shown by Murray Stevenson, Bankend). SHE WAS ALSO FIRST PRIZE UNCALVED COW, OPEN CLASSES, AT THE 1960 SHOW.

Visitors from Canada

In October we had a pleasant visit from a party of thirty Canadians, touring Scotland under the friendly wing of Mr. A. M. Buchanan of 'The Scottish Farmer'. In our picture (right) Mr. Buchanan is seen pointing out the features of a typical Ayrshire Cow—his model, Bankend 'Gladys'.

Steading Improvements

During the summer and autumn we carried out an extensive building programme at Changue—the re-roofing and extension of the main dairy byre; the provision of additional accommodation for preparing and mixing feeding stuffs; and the conversion of a stable to loose-boxes, with direct access from the dairy byre.



Steading Improvements (continued)

The opportunity was taken to enlarge the farm dairy, allowing for the introduction of a system whereby milk will be automatically conveyed from the byre to a refrigerated bulk tank, ready for bottling.

These alterations represent the final phase of a comprehensive scheme drawn up in 1948, involving the rearrangement, over a period of years, of the entire stead. We intend to feature the improved lay-out, and discuss the benefits arising therefrom, in next year's Calendar.

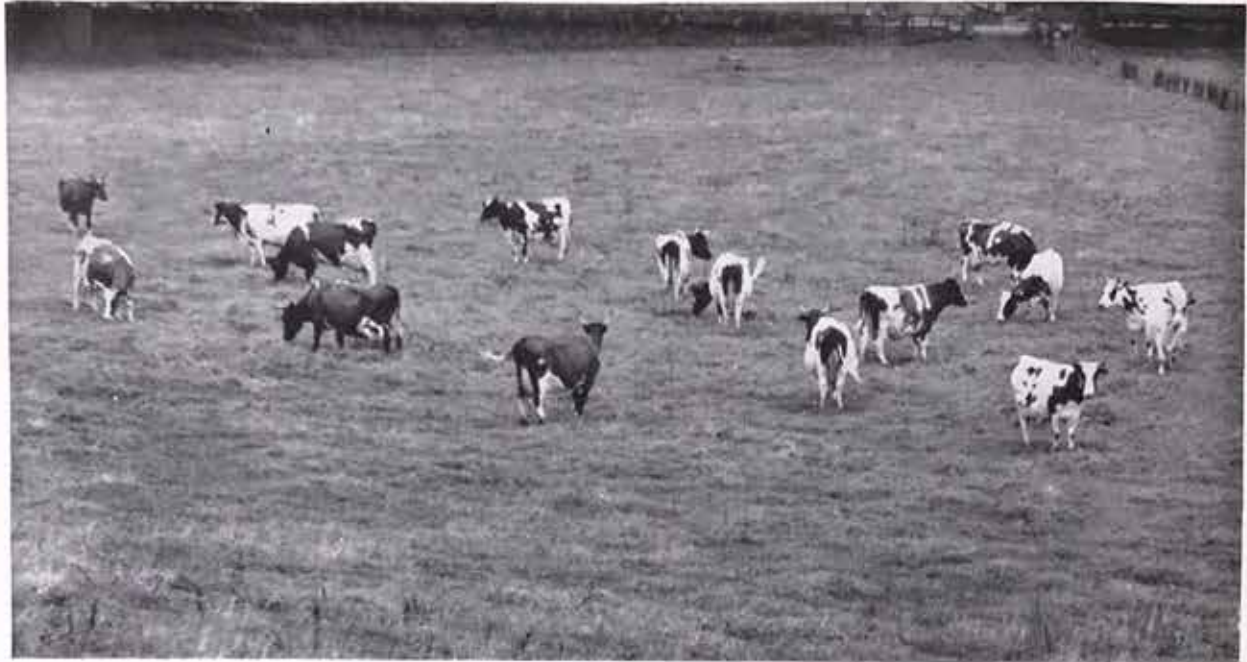
* *

Left—MAIN DAIRY BYRE

Features include—generous lighting (daylight and artificial); open ridge ventilation; lined roof, free from dust collecting surfaces; and wide doorway to permit of mechanised cleaning.

MILK AND BUTTER FAT—

—BY THE TON



An enlarged print of the above photograph was displayed by the Ayrshire Cattle Society on their Stand at the London Dairy Show, 1961. It shows a group of 16 cows from the Change and Bankend Herds which produced:—

957 TONS MILK & 39 TONS BUTTER FAT

The group have completed a total of 181 lactations averaging 11,841 lbs. at 4.04% b.f. ALL QUALIFY FOR THE SOCIETY'S 100,000 LBS. CLUB, AND 4 FOR THE 150,000 LBS. CLUB. The average age of the group, when photographed, was 14½ years.

Postscript to Silver Jubilee . . .

At a Staff Social Club function in the Royal Hotel on 6th December, the Partners were each presented with a silver cigarette box inscribed to mark the occasion of the firm's Silver Jubilee.

Needless to say, these beautiful gifts are greatly appreciated and will be treasured in years to come. Perhaps most of all we value the spirit which prompted them.

* * *

LEFT TO RIGHT—Mrs. Hughes, Mr. John Hughes (Chairman), Miss Mary McCrindle (over 30 years' service on farm staff), Mrs. John Stevenson, Mr. Stevenson, Mrs. McCartney, Mr. McCulloch, Mr. Andrew McCartney, Mrs. McCulloch, Mr. and Mrs. James Stevenson.



Photo by Cumnock Chronicle

Stevenson's Dairy Farms

PARTNERS: J. STEVENSON, M.B.E. J. M. STEVENSON W. S. STEVENSON

Producers and Distributors
of
Certified, Tuberculin Tested
and Pasteurised Milk

Suppliers of Milk to Schools
Hospitals and Canteens

REGISTERED OFFICE:

42 AYR ROAD
CUMNOCK

TELEPHONE 3255/6

Bakers · Confectioners
and Caterers

Dairy Farms:

CHANGUE (Tel. 3027)
BANKEND (Tel. 3101)
CROFHEAD (Tel. 2241)

Milk Price Ready Reckoner

FOR TUBERCULIN TESTED AND TUBERCULIN TESTED (PASTEURISED) MILK

AT 8½d. PER PINT

DAILY DELIVERY (PINTS)	CASH DUE FOR ONE WEEK				CASH DUE FOR TWO WEEKS			
	No Milk Tokens	1 Milk Token	2 Milk Tokens	3 Milk Tokens	No Milk Tokens	1 Milk Token	2 Milk Tokens	3 Milk Tokens
½	2/6	—	—	—	5/0	—	—	—
1	4/11½	2/7½	—	—	9/11	5/3	—	—
1½	7/5½	5/1½	—	—	14/11	10/3	—	—
2	9/11	7/7	5/3	—	19/10	15/2	10/6	—
2½	12/5	10/1	7/9	—	24/10	20/2	15/6	—
3	14/10½	12/6½	10/2½	7/10½	29/9	25/1	20/5	15/9
3½	17/4½	15/0½	12/8½	10/4½	34/9	30/1	25/5	20/9
4	19/10	17/6	15/2	12/10	39/8	35/0	30/4	25/8

NOTE—NATIONAL MILK SCHEME — MILK TOKENS

- (1) Milk Token Books should be handed to your Roundsman for safe-keeping in our Office.
- (2) The value of each Token (2/4d.) is credited to you weekly.

ACKNOWLEDGMENT:

May we express our thanks for the many helpful comments and letters of appreciation received each year from customers concerning the Calendar.

This Calendar is specially compiled and produced by Stevenson's Dairy Farms. Copyright of all pictures reserved.