

1961

Calendar

1961

25TH ANNIVERSARY NUMBER



ROSEMARY

WITH THE COMPLIMENTS OF . . .

F., J. & W. Stevenson

. . . YOUR DAIRY PEOPLE



SAND VOE
ST. CUTHBERT HOLM
CATRINE

Stevenson's Dairy Farms
CUMNOCK ————— Tel. 3255/6

*There's double beauty whenever a swan,
Swims in a lake, with her double thereon.
HOOD.*

JANUARY

1961

FEBRUARY

SUN	1	8	15	22	29
MON	2	9	16	23	30
TUES	3	10	17	24	31
WED	4	11	18	25	-
THUR	5	12	19	26	-
FRI	6	13	20	27	-
SAT	7	14	21	28	-

SUN	-	5	12	19	26
MON	-	6	13	20	27
TUES	-	7	14	21	28
WED	1	8	15	22	-
THUR	2	9	16	23	-
FRI	3	10	17	24	-
SAT	4	11	18	25	-

We value YOUR CUSTOM and do OUR BEST to SERVE YOU WELL



PETS' CORNER

Stevenson's Dairy Farms
CUMNOCK ————— Tel. 3255/6

*What is the worth of anything,
But for the happiness 'twill bring?
R. O. CAMBRIDGE.*

MARCH

1961

APRIL

SUN	-	5	12	19	26
MON	-	6	13	20	27
TUES	-	7	14	21	28
WED	1	8	15	22	29
THUR	2	9	16	23	30
FRI	3	10	17	24	31
SAT	4	11	18	25	-

SUN	2	9	16	23	30
MON	3	10	17	24	-
TUES	4	11	18	25	-
WED	5	12	19	26	-
THUR	6	13	20	27	-
FRI	7	14	21	28	-
SAT	1	8	15	22	29

We offer Customers the choice of three top quality grades of milk —

CERTIFIED — TUBERCULIN TESTED — TUBERCULIN TESTED (PASTEURISED)



"SENTINELS"
 Killoch Colliery seen from a new
 angle by Gilbert Ingham

A winning entry (1st equal) in our Calendar
 Picture Competition sponsored by Cumnock
 and District Camera Club.

Stevenson's Dairy Farms
 CUMNOCK ————— Tel. 3255/6

MAY

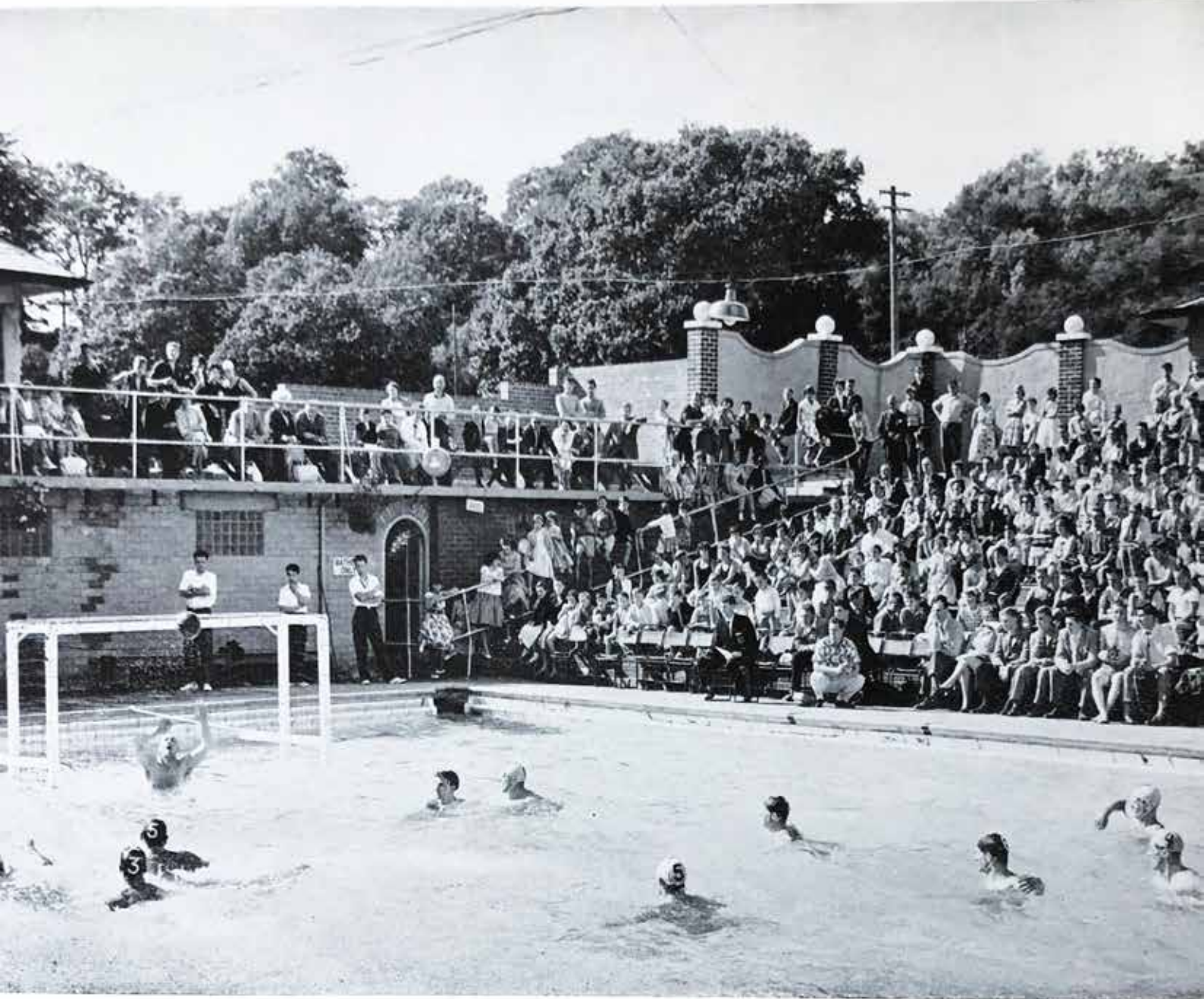
1961

JUNE

SUN	-	7	14	21	28
MON	1	8	15	22	29
TUES	2	9	16	23	30
WED	3	10	17	24	31
THUR	4	11	18	25	-
FRI	5	12	19	26	-
SAT	6	13	20	27	-

SUN	-	4	11	18	25
MON	-	5	12	19	26
TUES	-	6	13	20	27
WED	-	7	14	21	28
THUR	1	8	15	22	29
FRI	2	9	16	23	30
SAT	3	10	17	24	-

CREAM MAKES THE MEAL — AND ITS GOOD VALUE



THE SWIMMING POOL
WOODROAD PARK
CUMNOCK

Stevenson's Dairy Farms
CUMNOCK ————— Tel. 3255/6

Water Polo International 30th July, 1960.
Scotland 3 - England 6
PHOTO—Cumnock Chronicle.

JULY

1961

AUGUST

SUN	2	9	16	23	30
MON	3	10	17	24	31
TUES	4	11	18	25	-
WED	5	12	19	26	-
THUR	6	13	20	27	-
FRI	7	14	21	28	-
SAT	1	8	15	22	29

SUN	-	6	13	20	27
MON	-	7	14	21	28
TUES	1	8	15	22	29
WED	2	9	16	23	30
THUR	3	10	17	24	31
FRI	4	11	18	25	-
SAT	5	12	19	26	-

OUR DAIRY PREMISES AT CHANGUE MAY BE VISITED BY OUR CUSTOMERS AT ANY TIME



COUNTRY LIFE

Stevensons' Dairy Farms
CUMNOCK ————— Tel. 3255/6

*He who gives a child a treat,
Makes joy-bells ring in Heaven's Street.*
MASEFIELD.

SEPTEMBER

1961

OCTOBER

SUN	-	3	10	17	24
MON	-	4	11	18	25
TUES	-	5	12	19	26
WED	-	6	13	20	27
THUR	-	7	14	21	28
FRI	1	8	15	22	29
SAT	2	9	16	23	30

SUN	1	8	15	22	29
MON	2	9	16	23	30
TUES	3	10	17	24	31
WED	4	11	18	25	-
THUR	5	12	19	26	-
FRI	6	13	20	27	-
SAT	7	14	21	28	-

RICH PASTURES AND HEALTHY STOCK ENSURE THE HIGH QUALITY OF YOUR MILK SUPPLY



WINTER KEEP

Stevenson's Dairy Farms
CUMNOCK ————— Tel. 3255/6

*Now hairst-time is ower, and a fig for the laird,
My rent's now secure for the tollin' o't;
My fields a' are bare, and my crops in the yard,
And I'm nae mair in doubts o' the spoillin' o't.*
A. SCOTT.

NOVEMBER

1961

DECEMBER

SUN	-	5	12	19	26
MON	-	6	13	20	27
TUES	-	7	14	21	28
WED	1	8	15	22	29
THUR	2	9	16	23	30
FRI	3	10	17	24	-
SAT	4	11	18	25	-

SUN	3	10	17	24	31
MON	4	11	18	25	-
TUES	5	12	19	26	-
WED	6	13	20	27	-
THUR	7	14	21	28	-
FRI	1	8	15	22	29
SAT	2	9	16	23	30

MILK BOTTLES ARE PRECIOUS ————— PLEASE RETURN THEM DAILY

ALMOST 100 YEARS OF BREEDING



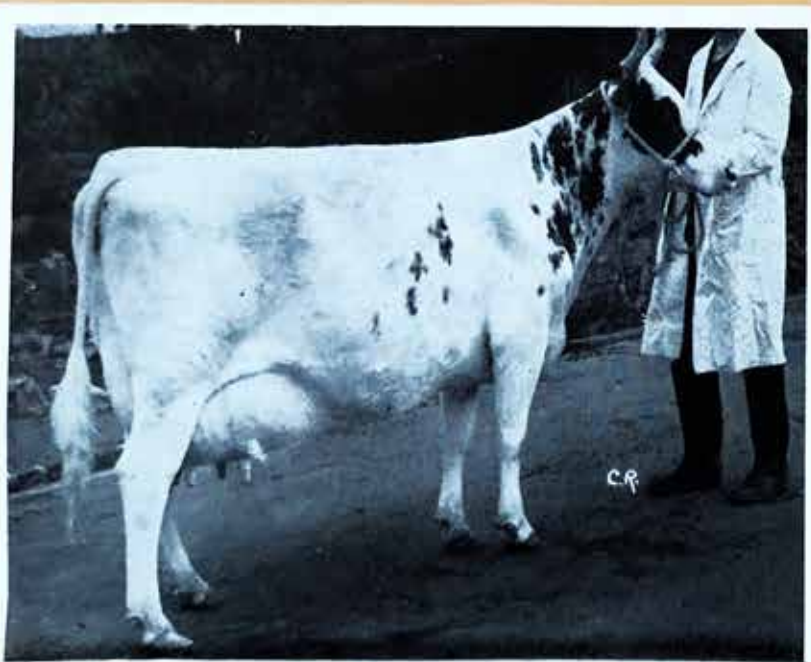
CHANGUE 'CISSIE 6th' (236684)

Dam—Changue 'Choice 7th' (63618) 'App.'
Sire—Lessnesock 'Pendragon' (92322) 'App.'

Milk Records of 'Cissie 6th'—

22/11/53,	12472 lbs.	@	4.35%	b.f. in	315 days
13/1/55,	11766 "	@	4.63%	" "	280 "
1/3/56,	10060 "	@	4.27%	" "	252 "
9/4/57,	12164 "	@	4.83%	" "	262 "
24/4/58,	10951 "	@	4.82%	" "	278 "
15/4/59,	11715 "	@	4.42%	" "	282 "

A member of the 'Choice' family—one of the oldest in the Herds.



CHANGUE 'MILKMAID 13th' (455676)

Dam—Changue 'Milkmaid 8th' (114299)
Sire—Bankend 'Masterstroke' (86407) 'App.'

Milk Records of 'Milkmaid 13th'—

8/5/58,	10500 lbs.	@	4.08%	b.f. in	314 days
9/6/59,	12558 "	@	4.36%	" "	305 days

'Milkmaid 13th' is the Dam of Changue 'Diagram' purchased by Messrs. C. & H. Papworth, Hall Farm, Cambridge.

The Origin of the Herd dates back to 1867 in which year John Stevenson, grandfather of the present occupiers, entered on the first lease of Changue, bringing his dairy stock with him from Hillhead, Sorn. The Ayrshire Cattle Society was not formed until 1877 and so details of the management of the herd in these early days are limited. The stock, however, appears to have been of a type acceptable to the Society and at the beginning of this century David Stevenson, father of the present owners, turned his attention to pedigree breeding. The first entries, 12 females and 3 bulls appear in the 1906 edition of the Society's Herd Book. Milk recording began in 1910, only a few years after the introduction of this valuable aid in the improvement of dairy stock.

There followed a period during which, dairy farming was not very prosperous; even so, the purchase of good bulls from leading herds continued and at Lanark Sales every year young home-bred bulls were sold, a practice which has gone on now for over 50 years. The present generation were introduced to the trade while still at school and interest in this and other aspects of pedigree breeding has grown over the years.

With the addition of the adjoining dairy farm of Crofthead and the stock-rearing farms of Muirdyke and Newfield in the early twenties, the cow stock was increased to 90, providing greater opportunity for improvement. About this time the words, "Passed the Tuberculin Test," began to appear in Sale Catalogues under the entries of stock from some of the leading herds and very soon progressive breeders turned their attention to establishing Tuberculin Tested herds. We, ourselves, started in 1932, adopting the segregation method in order to preserve the characteristics already established in the herd and to avoid the purchase of stock. By 1935, Tuberculin Tested herds had been established at the three farms, with the best families still intact.

The better price obtainable for Tuberculin Tested milk and stock, and a greater interest in pedigree breeding generally, combined to create a strong demand for animals from pedigree T.T. herds, and we embarked on an intensive breeding programme.

A lease of the neighbouring farm of Bankend was obtained in 1943 and a herd established there with foundation stock from Changue and one or two well-bred cows purchased at the Low Milton and Linnhead Dispersal Sales.

Our policy has always been to breed the type of cow which will calve regularly, produce upwards of 1,000 gallons of milk at over 4% b.f. in each lactation and live to a ripe old age, maintaining conformation and health throughout. Reference to a few of the more important achievements of the herds in recent years may indicate the extent to which this policy is succeeding.

In all, 1,200 cow and heifer lactations (305 days) have been recorded in the past 10 years, averaging 1,063 gallons at 4.14% b.f. with a calving interval of 413 days. It is noteworthy that the herds have produced four 2,000 gallons cows.

In the same period 4 cows have qualified for the Ayrshire Cattle Society's 150,000 lbs. Certificate and 30 for the 100,000 lbs. Certificate. A photograph of 16 of these animals all in the herd at the same time, appeared in our 1956 Calendar.

In the Scottish Milk Yield and Butter Fat Competition sponsored by British Oil and Cake Mills Ltd. in 1952, a team from Bankend was placed first in the Ayrshire Breed section with an average yield of 1,335 gallons at 4.25% butter fat.

Ten daughters by Bankend 'Parade' won the National Progeny Competition and the Jacob Murray Trophy in 1959. 'Parade' also sired the teams placed Second in 1958 and Third in 1957.

In the show ring representatives of the Herds have also been prominent, figuring in Prize Lists at Local, County and National Shows. At the Scottish Dairy Show, 1957, Bankend 'White Rose 3rd' won First Prize in the Milking Trials with a yield of 81.8 lbs. at 5.02% b.f. and Second Prize for Inspection in the class for Veteran Cows. She was also a member of the Team of six which won the Craig Trophy for the Ayrshire Breed.

At Ayr and Lanark Spring and Autumn Sales during the past 15 years the Herds have gained 18 First Prizes, 10 Seconds, 4 Championships and 4 Reserves and, on frequent occasions, the top price and the highest average.

The Ayrshire Herd now consists of 350 head, of which 160 are milk stock. There is a small Galloway Herd on the high-lying farms in addition to 20 score B.F. Ewes rearing Cross Lambs.

The entire holding extends to 1000 acres of which 642 are arable, 170 permanent grass and 182 rough grazing.

Continuing . . .

STOCK EXPORTED IN 1960

to **NEW ZEALAND**

BANKEND 'DE LUXE' (147344)

Dam—Changue 'Cissie 8th' (288472)

Sire—Bankend 'Parade' (100892) 'App.'

Milk Records of Dam—

Calved—

8/9/54,	10365 lbs.	@ 4.40%	b.f. in	345 days
3/11/55,	11535 ..	@ 4.57%	336 ..
28/1/57,	12304 ..	@ 5.06%	331 ..
23/4/58,	10665 ..	@ 4.72%	339 ..
8/7/59,	10689 ..	@ 5.08%	311 ..

Bankend 'De Luxe' was sold privately to Mr. J. G. Donald of Ardgowan, Featherston, New Zealand.



BANKEND 'DE LUXE'

to **NEW ZEALAND**

BANKEND 'DIADEM' (148299)

Dam—Bankend 'Wistful' (412003)

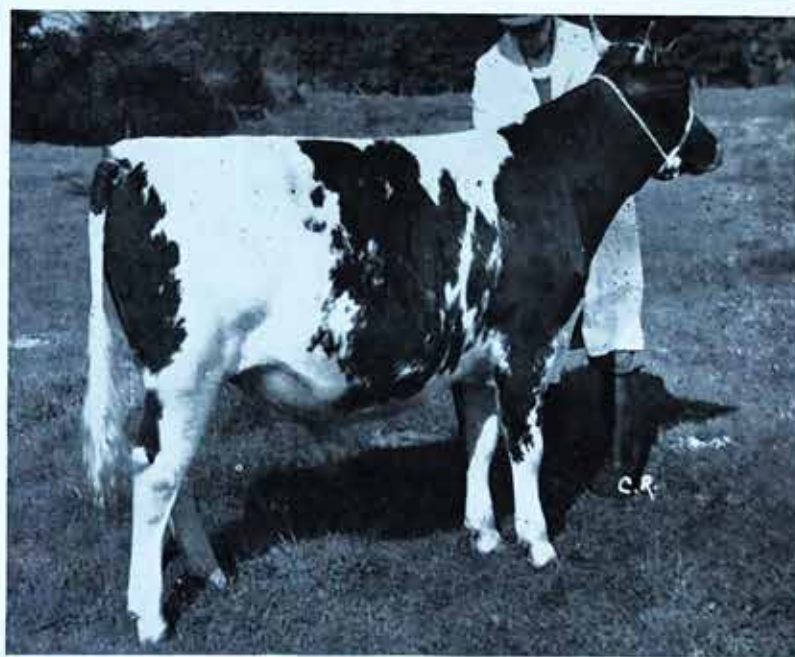
Sire—Cochrane's 'Stately Boy' (137233)

Milk Records of Dam—

Calved—

5/6/56,	10839 lbs.	@ 4.09%	b.f. in	351 days
19/8/57,	11964 ..	@ 4.38%	337 ..
7/9/58,	12137 ..	@ 4.25%	300 ..
15/9/59,	15958 ..	@ 4.40%	393 ..

Bankend 'Diadem' was sold privately to Mrs. Morton, Ingleside, Edendale, New Zealand.



BANKEND 'DIADEM'

The Ardgowan and Ingleside Ayrshires are two of the leading Herds in New Zealand and both are already using Bankend Sires. Mr. Donald purchased BANKEND 'UNION' in 1956 and Mrs. Morton, BANKEND 'TRUE LINE' in 1955. Both have reported successful Annual Sales featuring the progeny of these bulls.

to **COLOMBIA, SOUTH AMERICA**

In September, the yearling bull, CHANGUE 'DAIRY KING' was purchased by Dr. Tulio Perez of Bogota. At the same time two heifers, BANKEND 'QUAKER LILLY' and BANKEND 'MISS MAY 6TH' were shipped to the order of Senor Jorge Vargas, also of Bogota. These animals were part of a consignment of Ayrshires, the first ever to be shipped to Colombia.

**The main feature of 1960 has been
the export of these seven choicely bred animals**

CHANGUE and BANKEND

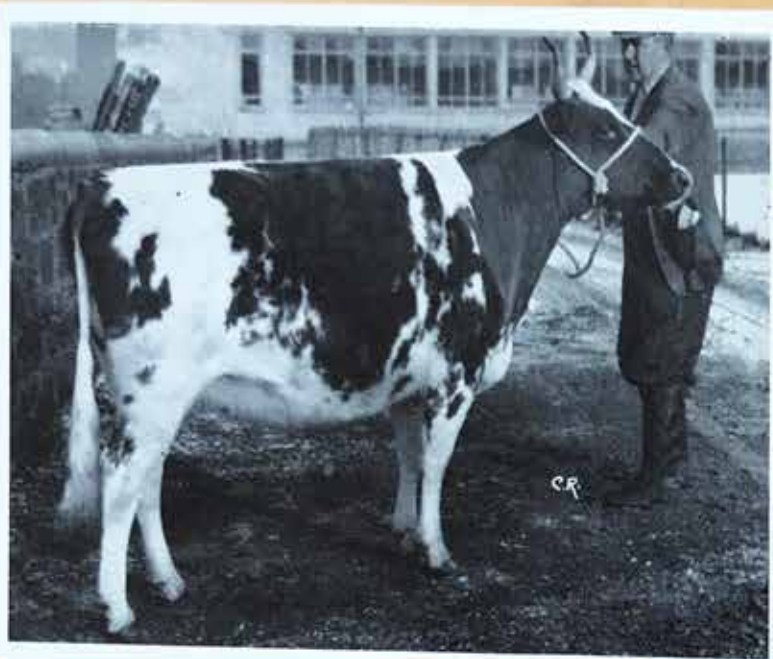
Ayrshire Herds

ESTABLISHED
AT CHANGUE 1870

ONE OF THE OLDEST 'AYRSHIRE' STOCKS

MILK RECORDED
SINCE 1910

STOCK EXPORTED IN 1960



BANKEND 'QUAKER SEEDLING'

to CANADA

BANKEND 'QUAKER SEEDLING' (579980)

Dam—Bankend 'Quaker Seed 2nd' (393189).

Sire—Bankend 'Rebate' (113683) 'App.'

This Calving Heifer was consigned to the National Sale held at Quebec on 23rd May, 1960, by the Ayrshire Breeders' Association of Canada. She made the top price for females, and was purchased by Mr. G. M. Brawley for his Herd at Ann Brae Farm, Ashburn, Ontario.

to CANADA

BANKEND 'EXPECTATION' (149424)

Dam—Bankend 'Sarah 5th' (262281)

Sire—Bankend 'Welcome' (139028)

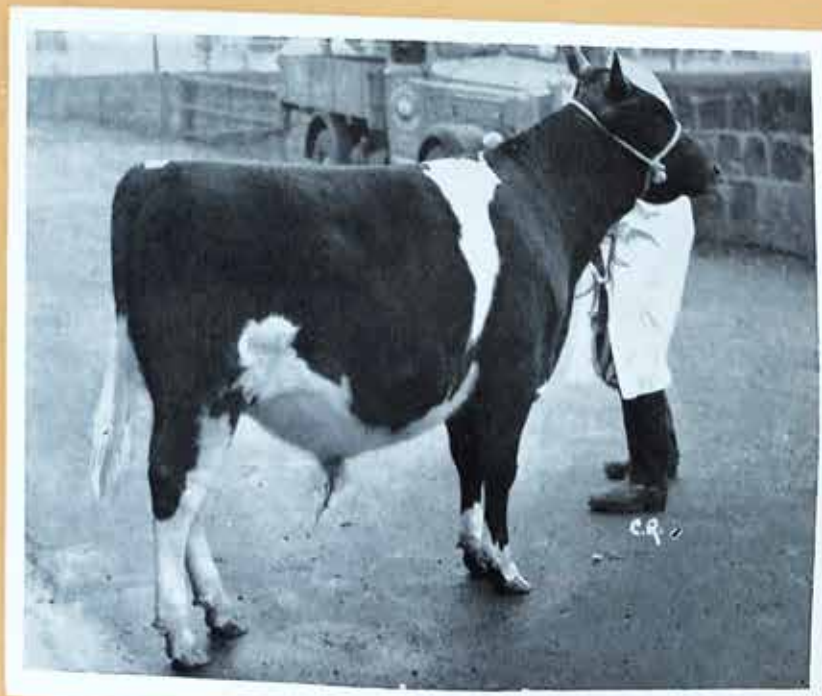
Milk Records of Dam—

Calved—

16/9/53,	11140 lbs.	@ 4.62%	b.f. in 292 days
6/10/54,	14218 ..	@ 4.61% 297 ..
29/10/55,	14955 ..	@ 4.37% 319 ..
24/11/56,	12476 ..	@ 4.31% 274 ..
18/11/57,	14592 ..	@ 4.31% 319 ..
3/12/58,	15717 ..	@ 4.34% 325 ..
6/1/60,	15363 ..	@ 4.69% 306 ..

Still milking, 25/10/60.

This Bull made the top price at the Ayr Show and Sale in November, 1960, and was purchased by Mr. Brawley, who had flown over specially for Ayrshire Week.



BANKEND 'EXPECTATION'

S. J. & W. STEVENSON
CUMNOCK
AYRSHIRE

Telephone

CHANGUE
CROFTHEAD
BANKEND

Cumnock
" "
" "

3255-8
2241
3101

Noteworthy . . .

The Pedigree Herds

Once again our entries were prominent at the Bull Sales, Bankend gaining both the highest price and the highest average at Ayr in November. The main feature of 1960 was, however, the sale of four young bulls and three heifers for export. Particulars of these animals, bred from some of the best families in the Herds, are given elsewhere in this Calendar.

It takes considerable courage on the part of an overseas breeder to purchase stock, in some cases unseen, and face the long and involved procedure which must be undertaken before the animals arrive home. We congratulate them on their enterprise. Our export list now includes the following countries—New Zealand, Canada, South America, Rhodesia, Kenya, South Africa, Hong Kong, Norway, Sweden and Finland.

The Dairy

In the provision of plant and equipment we have always set ourselves a standard well above that laid down in Dairy Bye-laws. The new Refrigeration and Pasteurising Plant, described on another page, represents a big step forward on the part of a rural distributor.

Extension of Service

In August we commenced the supply of farm bottled, Tuberculin Tested, Milk on a wholesale basis, to Messrs. M. Richmond and Son, Knockdon, Maybole, who have been distributing their own Certified supplies in Ayr for many years.

In October we arranged with Mr. Bryson of Whiteflat to take over his retail interest in Catrine. We continue to supply Whiteflat milk to the customers concerned and Mr. Boan, who was Mr. Bryson's roundsman, remains with us in that capacity.

We take this opportunity to welcome all new customers, not only in Ayr and Catrine, but throughout the whole area which we serve.

Aye Ready

It is a measure of the confidence we have in our service that we continue to extend an open invitation to customers to visit our plant and premises at any time. Each year many take advantage of this invitation. On three occasions, in 1939, 1953 and 1958 we arranged special 'At Home' days which were extremely well supported. To mark our 25th Anniversary we hope to repeat this popular event in the autumn of this year.



We were pleased to have a visit from Mr. Brawley (seen here [left] with Mr. James Stevenson) purchaser of two animals for Canada.

From the Visitors Book

Once again we had the pleasure of receiving many visitors from home and abroad to see over the dairy premises and inspect the Pedigree Herds. Amongst those from abroad were: Representatives of the Finnish Ayrshire Society, with their Vice-President, Mr. Holger von Knorring.

Mr. Douglas Ness of Howie, Quebec, who sponsored the shipment of cattle to the Canadian National Ayrshire Sale.

Mr. John Donald, son of Mr. James Donald, Ardgowan, Featherston, New Zealand, who purchased Bankend 'De Luxe.'

Mr. Clare Burt of the Canadian Broadcasting Company, who recorded a short programme.

Dr. Robert Blood, a breeder of Pedigree Ayrshires and formerly State Governor of New Hampshire, U.S.A.

We continue to take a special interest in the quarterly visits of the Student Nurses from Ballochmyle and the Nursing Class, Cumnock Academy.

The Calendar

As a frontispiece on this special occasion we chose to feature a child, representing that important age-group whose health and well-being is so much our concern and responsibility.

We regard the Calendar as a link with the homes of our customers and friends both in this country and overseas. It has been published every year since the business started—this is the 24th issue—and through its pages we have tried to keep customers fully informed of all our efforts—the provision of up-to-date equipment, reconstruction of buildings, and so on—to provide a first-class dairy service.

The Royal Hotel

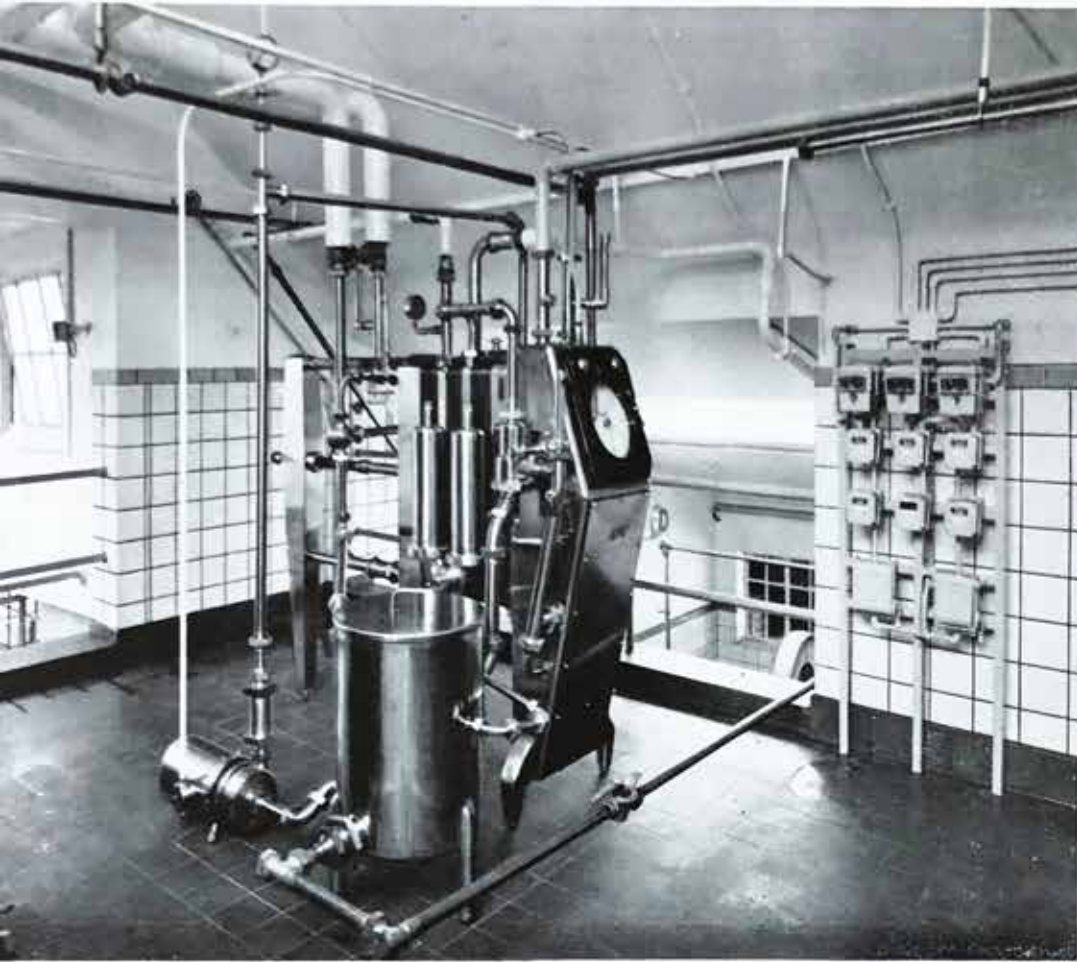
The new Function facilities have now been in use for twelve months. During that period Weddings, Dinners, Dances, Parties, Exhibitions, Conferences and a variety of other functions have been catered for. From the number of repeat and advance bookings it would seem that we have provided a service for which there was a need in Cumnock and district.

*

The new Hall, set for Dinner.



Keeping Abreast of the Times . . .



ABOVE—H.T.S.T. Pasteuriser, by A.P.V.

Automation in the Dairy

A FEATURE OF OUR BUSINESS is the high proportion of Certified and Tuberculin Tested Milk sold fresh from the farm, and despite recent changes in marketing arrangements in the main Scottish Board area, there is a continuing demand for these higher-priced Grades. Pasteurised Tuberculin Tested Milk, however, now forms a greater part of total sales, mainly because this Grade is specified by Local Authorities for Schools and Hospitals. These supplies form an important part of our business and we must provide the necessary facilities.

THE PASTEURISING PLANT (left) was installed in 1960. It replaces the original batch type pasteurisers and represents an important addition to our dairy equipment. The new plant, which is of stainless steel throughout, introduces a different technique incorporating, amongst other refinements, push-button control. We now have a continuous flow from start to finish during which the milk is totally enclosed. This has obvious operational and hygienic advantages.

College reports on samples of milk taken regularly from the plant since its installation have been exceptionally good and we are satisfied that this, the Rolls Royce of pasteurising equipment, puts us right on top.

A NEW CHILLED WATER SYSTEM has been installed to work in conjunction with the pasteuriser. Adequate refrigeration is indispensable in the modern dairy and we are now well placed to cope with the warmest weather. All grades of milk are cooled to just under 40° Fahrenheit and maintained at that temperature until leaving the dairy for distribution. Customers are, therefore, assured of getting their milk in first-class condition.

Laboratory Control

Samples of all three Grades, Certified, Tuberculin Tested and Pasteurised, are submitted regularly to the Dairy School, Auchincruive, for examination and report. The results of these Tests (which may be seen by our Customers at any time) confirm that each Grade is of a high standard from both the nutritional and bacteriological points of view. Empty bottles taken at random from the Bottle Washing Machine are also submitted for sterility tests, as a check on the efficiency of the plant. All this is in addition to frequent routine tests made by the Local Authority under statutory powers.

Transport

The high cost of a delivery service in a rural area, whatever the commodity, is quite a problem; for milk, involving a seven-day-week routine, the difficulty is obviously more acute. All our rounds are carefully zoned to reduce mileage to the minimum consistent with efficient service and we are constantly seeking other economies. Some years ago we started changing over to diesel fuel and now only 6 of the 18 vehicles are petrol driven. All maintenance and repair work is carried out in a fully equipped work-shop by our own Engineers.



"Life is an opportunity for service; not as little as we dare, but as much as we can"

B. F. WESTCOTT.

The Fleet in Port.

MILK BAR REPLACES *Public-House*

The first milk bar run by dairy farmers themselves in Scotland will be opened to-morrow at Old Cumnock in premises in the town square that formerly were occupied as a public-house.

Promoters of the enterprise are three brothers, Messrs J., J. M., and W. S. Stevenson, and the new establishment will provide an outlet for the dairy produce of their four farms in the district.

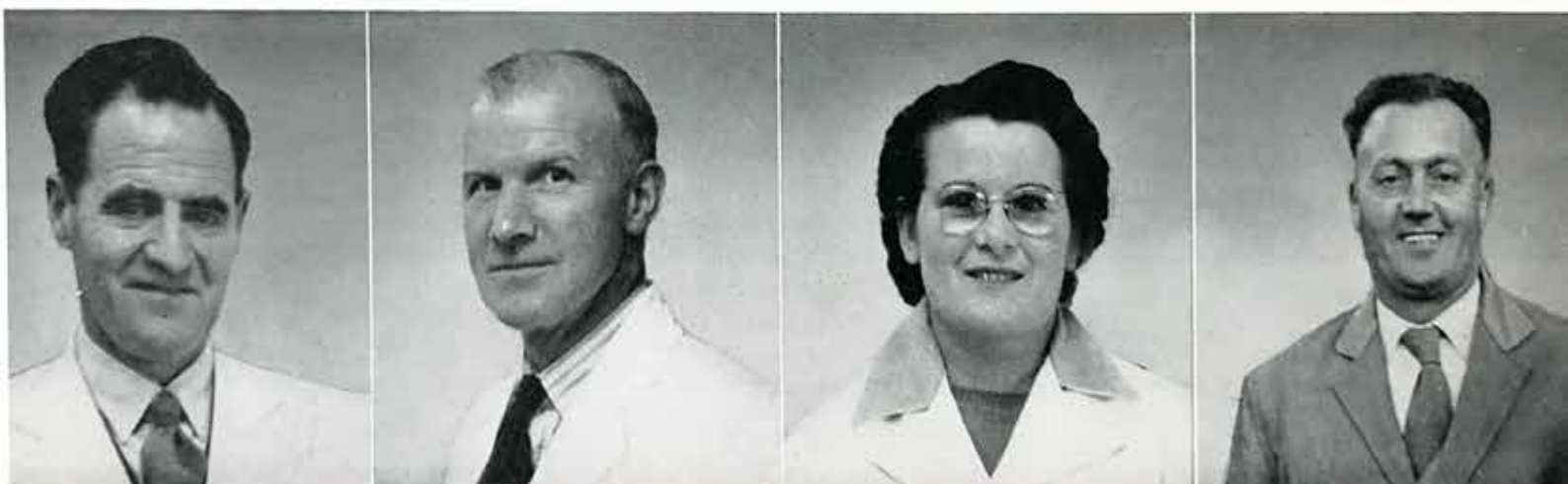
Mr T. G. Henderson, manager of the Scottish Milk Marketing Board, will perform the opening ceremony, and the Provost of Old Cumnock, Mrs Emrys Hughes—a daughter of Keir Hardie, the Labour pioneer—will preside.



ABOVE—A corner of the Shop, showing the Milk Bar unit, one of the first to be made. The Shop, Milk Bar and Tea Room were introduced initially to provide additional outlets for milk and dairy produce. Later, a small home bakery was added and the Tea Room extended to provide a full Restaurant service. Eventually the bakery was developed to embrace a full range of confectionery goods, and recently new premises were built and equipped with modern plant. The Restaurant has now been transferred to more commodious premises in the Hotel above and the Shop is in course of reconstruction and extension. Our retail and catering interests in Cumnock now form an important part of the business.

ABOVE—From the "Glasgow Bulletin," 4th November, 1936.

A Backward Glance



Long Service

ABOVE—Four members of staff who have completed over 20 years service, on the retail side of the business, l. to r.—Alex. McCulloch dairy manager (21 years), Charlie Marshall, dairy foreman (22 years), Mrs. Gilroy, head girl (20 years) and Andrew McCartney, rounds foreman (23 years, including period of war service). Three others have given over 15 years service, Miss McHoull, head girl in shop, and John Ferguson and Wm. Black, roundsmen; there are several with over 10 years service. Naturally, this is a matter of great satisfaction to us and we readily acknowledge such devoted service.

Sandwiches Galore

BELOW, LEFT—Supplementary rations were issued to workers in heavy industry during the period of food shortage, and we were asked to operate a packed meals service for colliery workers. Very soon the demand for this was more than the catering side of the business was able to handle and a new organisation—South Ayrshire Canteen Services—was formed, in conjunction with Mr. James Livingstone, to take over this specialised work. Premises were obtained and equipped and ultimately over 1,200 packed lunches were being supplied daily.

The Girls take over

BELOW, RIGHT—During the war years girls were in charge of most of the rounds. We recall with pleasure the excellent service they gave to customers and firm alike in spite of difficulties arising from scarcities, restrictions, and the black-out.



Twenty-Fifth Anniversary

5th NOVEMBER

1936 - 1961

A Brief Review

In the early thirties, when our entry into the retail side of the dairy industry was being considered, the country was just beginning to recover from a long period of economic depression. Unemployment was still fairly widespread and the demand for farm produce was anything but good. Marketing conditions were far from satisfactory, indeed it was only with considerable difficulty that many producers were able to find a market at all, let alone one at prices which would give a reasonable return.

In 1932, just before the advent of the S.M.M.B., we had set out to upgrade the herds and premises to Tuberculin Tested standard. This, our first objective, was accomplished in 1935 and we were therefore in a position to enter the market with Tuberculin Tested milk.

In the summer of 1936 we obtained suitable premises in Cumnock and converted them to suit our particular purpose. At the same time the necessary equipment for cooling and bottling milk, and producing cream, butter and cheese was installed at Changue. It was, we felt, essential to provide a complete dairy service.

On 5th November, 1936, after many months of preparation we opened the first Dairy Shop and Tea Room in Cumnock and, incidentally, the first Milk Bar in Scotland run by farmers. Mr. T. G. Henderson, C.B.E., then manager of the Scottish Milk Marketing Board, who had shown considerable interest in the venture, performed the opening ceremony.

At that time there were many Producer Retailers operating successfully in the district. To establish retail rounds under these circumstances was therefore a slow process but gradually we gained a foot hold. Contracts for School and Welfare milk were obtained and after two years we had



ABOVE—S.D.F. is a family business in which the three partners are personally concerned with the interests of customers and staff. Each section has its own charge-hand and the entire organisation provides employment for a staff of 100. This photograph, taken on the occasion of our "At Home" in September, 1958, includes Mr. John Stevenson, who is mainly concerned with administration and sales, Mr. James and Mr. William Stevenson, who are responsible for management of the farms and the Pedigree Herds.

secured an outlet for the production of all three farms. To limit our sales to what we could produce ourselves seemed a short-sighted policy and it was decided to purchase further supplies from neighbouring farms, and allow the business to develop.

The war years with their scarcities, controls and regulations were a particularly trying time for all concerned but somehow we managed to provide a reasonably efficient service. During this period dairy machinery was unobtainable and only minor alterations to premises were possible. By 1948, however, war-time restrictions were beginning to disappear and we were able to turn our attention once more to further development. Turnover now exceeded the capacity of both plant and premises and we embarked on quite an extensive building programme to accommodate several major items of equipment. The opportunity was taken to improve the lay-out of the farm buildings and the entire project took almost two years to complete. Since then, in a period in which expanding production has created new marketing conditions, progress has been steady rather than spectacular.



The past 25 years have been marked by great changes in the structure of the dairy industry as well as in the life of the Nation. In these circumstances building a business from scratch presented many problems but it has been an experience we would not wish to have missed.

* * *

In presenting this Special Edition of our Calendar, we express our thanks for your custom over the years. Milk is probably the most important item in the family diet and, as your suppliers, we do appreciate the trust you place in us. Our constant aim to be worthy of that trust is shared by a loyal and enthusiastic Staff and we readily acknowledge their co-operation in our efforts to provide you with a first-class service. We join with them in wishing you and your family Good Health, Happiness and Prosperity in the coming year.

J., J. & W. STEVENSON.

LEFT—The Dairy Buildings,

Stevensons' Dairy Farms

PARTNERS: J. STEVENSON, M.B.E. J. M. STEVENSON W. S. STEVENSON

Producers and Distributors
of
Certified, Tuberculin Tested
and Pasteurised Milk

Suppliers of Milk to Schools
Hospitals and Canteens

REGISTERED OFFICE:

42 AYR ROAD
CUMNOCK

TELEPHONE 3255/6

Bakers · Confectioners
and Caterers

Dairy Farms:
CHANGUE (Tel. 3027)
BANKEND (Tel. 3101)
CROFTHEAD (Tel. 2241)

CALENDAR 1961

JANUARY		FEBRUARY		MARCH		APRIL		MAY		JUNE	
Su.	- 1 8 15 22 29	Su.	- - 5 12 19 26	Su.	- - 5 12 19 26	Su.	- 2 9 16 23 30	Su.	- - 7 14 21 28	Su.	- - 4 11 18 25
Mn.	- 2 9 16 23 30	Mn.	- - 6 13 20 27	Mn.	- - 6 13 20 27	Mn.	- 3 10 17 24 -	Mn.	- 1 8 15 22 29	Mn.	- - 5 12 19 26
Tu.	- 3 10 17 24 31	Tu.	- - 7 14 21 28	Tu.	- - 7 14 21 28	Tu.	- 4 11 18 25 -	Tu.	- 2 9 16 23 30	Tu.	- - 6 13 20 27
Wd.	- 4 11 18 25 -	Wd.	- 1 8 15 22 -	Wd.	- 1 8 15 22 29	Wd.	- 5 12 19 26 -	Wd.	- 3 10 17 24 31	Wd.	- - 7 14 21 28
Th.	- 5 12 19 26 -	Th.	- 2 9 16 23 -	Th.	- 2 9 16 23 30	Th.	- 6 13 20 27 -	Th.	- 4 11 18 25 -	Th.	- 1 8 15 22 29
Fr.	- 6 13 20 27 -	Fr.	- 3 10 17 24 -	Fr.	- 3 10 17 24 31	Fr.	- 7 14 21 28 -	Fr.	- 5 12 19 26 -	Fr.	- 2 9 16 23 30
Sa.	- 7 14 21 28 -	Sa.	- 4 11 18 25 -	Sa.	- 4 11 18 25 -	Sa.	1 8 15 22 29 -	Sa.	- 6 13 20 27 -	Sa.	- 3 10 17 24 -

JULY		AUGUST		SEPTEMBER		OCTOBER		NOVEMBER		DECEMBER	
Su.	- 2 9 16 23 30	Su.	- - 6 13 20 27	Su.	- 3 10 17 24 -	Su.	- 1 8 15 22 29	Su.	- - 5 12 19 26	Su.	- 3 10 17 24 31
Mn.	- 3 10 17 24 31	Mn.	- - 7 14 21 28	Mn.	- 4 11 18 25 -	Mn.	- 2 9 16 23 30	Mn.	- - 6 13 20 27	Mn.	- 4 11 18 25 -
Tu.	- 4 11 18 25 -	Tu.	- 1 8 15 22 29	Tu.	- 5 12 19 26 -	Tu.	- 3 10 17 24 31	Tu.	- - 7 14 21 28	Tu.	- 5 12 19 26 -
Wd.	- 5 12 19 26 -	Wd.	- 2 9 16 23 30	Wd.	- 6 13 20 27 -	Wd.	- 4 11 18 25 -	Wd.	- 1 8 15 22 29	Wd.	- 6 13 20 27 -
Th.	- 6 13 20 27 -	Th.	- 3 10 17 24 31	Th.	- 7 14 21 28 -	Th.	- 5 12 19 26 -	Th.	- 2 9 16 23 30	Th.	- 7 14 21 28 -
Fr.	- 7 14 21 28 -	Fr.	- 4 11 18 25 -	Fr.	- 1 8 15 22 29 -	Fr.	- 6 13 20 27 -	Fr.	- 3 10 17 24 -	Fr.	1 8 15 22 29 -
Sa.	1 8 15 22 29 -	Sa.	- 5 12 19 26 -	Sa.	2 9 16 23 30 -	Sa.	- 7 14 21 28 -	Sa.	- 4 11 18 25 -	Sa.	2 9 16 23 30 -

CALENDAR 1962

JANUARY		FEBRUARY		MARCH		APRIL		MAY		JUNE	
Su.	- - 7 14 21 28	Su.	- - 4 11 18 25	Su.	- - 4 11 18 25	Su.	- 1 8 15 22 29	Su.	- - 6 13 20 27	Su.	- - 3 10 17 24
Mn.	- 1 8 15 22 29	Mn.	- - 5 12 19 26	Mn.	- - 5 12 19 26	Mn.	- 2 9 16 23 30	Mn.	- - 7 14 21 28	Mn.	- - 4 11 18 25
Tu.	- 2 9 16 23 30	Tu.	- - 6 13 20 27	Tu.	- - 6 13 20 27	Tu.	- 3 10 17 24 -	Tu.	- 1 8 15 22 29	Tu.	- - 5 12 19 26
Wd.	- 3 10 17 24 31	Wd.	- - 7 14 21 28	Wd.	- - 7 14 21 28	Wd.	- 4 11 18 25 -	Wd.	- 2 9 16 23 30	Wd.	- - 6 13 20 27
Th.	- 4 11 18 25 -	Th.	- 1 8 15 22 -	Th.	- 1 8 15 22 29	Th.	- 5 12 19 26 -	Th.	- 3 10 17 24 31	Th.	- - 7 14 21 28
Fr.	- 5 12 19 26 -	Fr.	- 2 9 16 23 -	Fr.	- 2 9 16 23 30	Fr.	- 6 13 20 27 -	Fr.	- 4 11 18 25 -	Fr.	- 1 8 15 22 29
Sa.	- 6 13 20 27 -	Sa.	- 3 10 17 24 -	Sa.	- 3 10 17 24 31	Sa.	- 7 14 21 28 -	Sa.	- 5 12 19 26 -	Sa.	- 2 9 16 23 30

LETTER POSTAGE

Not exceeding 1 oz. 3d.
2 oz. 4d.
Each additional 2 oz. 1d.
No letter to be above 2 ft. in length
or 18 ins. in width or depth.

In form of roll 3 feet 3 inches for
length and twice the diameter
combined (2 feet 8 inches for the greatest
dimension).

POST CARD RATE

For every postcard 2d.
" reply post card 5d.

PARCEL POST

Not exceeding 2 lbs. 1/6
3 lbs. 1/9
4 lbs. 2/-
5 lbs. 2/3
6 lbs. 2/6
7 lbs. 2/9
8 lbs. 3/-
11 lbs. 3/3
15 lbs. (max.) 3/6
Greatest length, 3 feet 6 inches.
Greatest length and girth combined,
6 feet.

REGISTERED PACKETS (PARCELS INCLUDED)

A fee of 1/- insures to the amount
of £10; £20 1/1; £40 1/2; £80 1/3;
£80 1/4; and so on up to £400 at the
rate of an additional 1d. for each £20.

REGISTERED NEWS. RATE

Not exceeding 6 oz. (per copy) .. 2d.
Every additional 6 oz. (per copy) 1d.
Maximum Weight 2 lbs.

PRINTED PAPER RATE

Not exceeding 2 oz. 2d.
" 4 oz. 4d.
Each additional 2 oz. 1d.
Sizes same as for letter postage.

BLIND LITERATURE RATE

Not exceeding 2 lbs. 3d.
" 5 " 1d.
" 8 " 1d.
" 11 " 2d.
" 15 " (max.) 2d.
Sizes same as for letter postage.

MONEY ORDERS

INLAND—Sums not exceeding
up to | £20, 1/2 | £40, 1/6
£10, 1/- | £30, 1/4 | £50, 1/8
No single order can be issued for a
sum exceeding £50.
No order may contain a fraction
or part of a penny.

POSTAL ORDERS

s. d. Chge.	s. d. Chge.
For 0 6... 2d.	For 11 0... 3d.
" 1 0... 2d.	" 12 0... 3d.
" 1 6... 3d.	" 13 0... 3d.
" 2 0... 3d.	" 14 0... 3d.
" 2 6... 3d.	" 15 0... 3d.
" 3 0... 3d.	" 16 0... 3d.
" 3 6... 3d.	" 17 0... 3d.
" 4 0... 3d.	" 18 0... 3d.
" 4 6... 3d.	" 19 0... 3d.
" 5 0... 3d.	" 20 0... 3d.
" 6 0... 3d.	" 21 0... 3d.
" 7 0... 3d.	" 40 0... 6d.
" 8 0... 3d.	" 60 0... 6d.
" 9 0... 3d.	" 80 0... 6d.
" 10 0... 3d.	" 100 0... 6d.

Orders must be cashed within six
months of last day of month in which
issued. Sender must fill in name of
person to whom Order is sent, and he
can also fill in the name of any par-
ticular Post Office and Order will
be cashed at that Office only.

INLAND TELEGRAMS

12 words 3/-; and every additional
word, 3d. Eire, 12 words for 3/6,
and every additional word, 3d.

BILLS AND PROMISSORY NOTES

BILLS OF EXCHANGE payable on demand or at sight, or on
presentation..... 2d.

BILL OF EXCHANGE of any other kind whatsoever (except a bank
note) and PROMISSORY NOTE of any kind whatsoever (except
a bank note)—drawn, or expressed to be payable, or actually
paid, or endorsed, or in any way negotiated in the United
Kingdom, where the amount or value of the money for
which the bill or note is drawn or made.

	s. d.
Does not exceed.....	£10..... 0 2
Exceeds £10 and does not exceed 25.....	0 3
" 25 " 50.....	0 6
" 50 " 75.....	0 9
" 75 " 100.....	1 0
And 1s. for every additional £100 or fractional part of £100.	

QUARTERLY TERMS

IN SCOTLAND	IN ENGLAND
Candlemas..... Feby. 2	Lady Day..... Mar. 25
Whitsunday..... May 15	Midsummer..... June 24
Lammas..... Aug. 1	Michaelmas..... Sept. 29
Martinmas..... Nov. 11	Christmas..... Dec. 25

BANK HOLIDAYS

New Year's Day, Good Friday, First Monday in May,
First Monday in August, and Christmas.

ACKNOWLEDGMENT:

May we express our thanks for the many helpful comments and letters of appreciation received each year
from customers concerning the Calendar.

This Calendar is specially compiled and produced by Stevensons' Dairy Farms. Copyright of all pictures reserved.