

1960

Calendar

1960

TWENTY-THIRD ISSUE



THE PLOUGHING MATCH

With the Compliments of . . .

J., J. & W. Stevenson

. . . your dairy people

Noteworthy . . .

Herd Successes

The year 1959 was perhaps one of the most successful we have experienced with our Ayrshire Herds and consequently we are featuring some of the stock, in this, the twenty-third issue of our Calendar.

Winning the National Progeny Trophy in the Spring of 1959 after gaining Second Place in 1958 and Third in 1957 was most satisfying. Bankend 'Parade', Sire of the ten cows in the team, and one of our best breeding bulls, has certainly left his mark in the Herds.

AYR AND LANARK BULL SALES—Ayr Bull Sale in November brought Championship Honours to the Bankend Herd for the fourth time in ten years. The Champion was First in the Class for Junior Bulls. To complete the 'Double,' at Lanark Bull Sale the following week, the Change Herd, which has consigned bulls to this Sale for over fifty years, won First Place in the class for Junior Bulls. In both instances our entries gained the highest prices. Full details of these achievements will be found in succeeding pages.

It was most encouraging to find buyers of former years again interested in our stock at the Sales and we take this opportunity to wish all customers old and new, success with their purchases.

One of the reasons for the success of the Change and Bankend Stock is undoubtedly the high butter-fat content of the milk produced, and although our retail customers may not appreciate the significance of 'Pedigrees' and 'Milk Records,' we are sure they realise the vital importance of obtaining for their families a Milk Supply which is rich in Butter-Fat and other valuable solids.

THE DAIRY—Our aim has always been to keep abreast of the times and so provide our customers with the best possible service.

The latest move in this direction is the installation of a new chilled-water cooling system and an A.P.V. Para-flow H.T.S.T. Plant. Both outfits embody the latest developments in their respective fields and will be in operation early in 1960.

THE ROYAL HOTEL—Another phase in the modernisation of the hotel has just been completed. A spacious hall, contemporary in design, having special provision for heating, lighting and ventilation and with an excellent floor for dancing is now available. Parties of 150 can be seated for a meal or 200 for Meetings, Conferences, etc. There is an adjoining kitchen fully equipped to cater for this number and bar and buffet facilities adjacent.



Photo by *Scottish Farmer*

Dairy Technology Group

Plans for a Cocktail Bar have just been approved by the Licensing Court and the work will be completed in the Spring of 1960.

FROM THE VISITORS BOOK—We again had the pleasure of receiving many parties from home and abroad. In June we had the honour of a visit from the Scottish Section of the Society of Dairy Technology. The Chairman, Dr. J. F. Malcolm, O.B.E., M.Sc., Ph.D., formerly Bacteriologist of the West of Scotland Agricultural College was with the party of thirty-five which included representatives of the Dairy Trade and Kindred Organisations.

In July we had a group of Young Farmers from England on a study tour of Scottish farms. The party was under the leadership of Sir James Scott-Watson, K.T., C.B.E., M.C., LL.D., and the tour was sponsored by the National Farmers' Union of England.

In May we had Mr. Paul Nielsen, the Danish Consul in Glasgow, with some Danish Farm Co-operative Members, who were studying the Marketing of Farm Produce. A party of farmers from Ontario, also interested in Producers' Marketing Boards in this country, visited us in August.

15th Annual Staff Dance—11th November, 1959. " . . . Jacks (not) a dull boy."





"THE CRAIGS,"
GLENAFTON, NEW CUMNOCK

Stevenson's' Dairy Farms
CUMNOCK ————— Tel. 3255/6

*Trout in the burn grow great as herr'n,
The simple sheep can find their fair'n,
The wind blows clear about the cairn,
Wi' caller air;
The muircock an' the bareft bairn,
Are happy there.*
R. L. STEVENSON.

JANUARY

1960

FEBRUARY

SUN	3	10	17	24	31
MON	4	11	18	25	-
TUES	5	12	19	26	-
WED	6	13	20	27	-
THUR	7	14	21	28	-
FRI	1	8	15	22	29
SAT	2	9	16	23	30

SUN	-	7	14	21	28
MON	1	8	15	22	29
TUES	2	9	16	23	-
WED	3	10	17	24	-
THUR	4	11	18	25	-
FRI	5	12	19	26	-
SAT	6	13	20	27	-

We value YOUR CUSTOM and do OUR BEST to SERVE YOU WELL



SPRINGTIME ON AN OCHILTREE FARM

Stevensons' Dairy Farms

CUMNOCK

Tel. 3255/6

*Give fools their gold and knaves their power,
Let fortune's bubbles rise and fall;
Who sows a field, or trains a flower,
Or plants a tree is more than all.*

WHITTIER.

MARCH

1960

APRIL

SUN	-	6	13	20	27
MON	-	7	14	21	28
TUES	1	8	15	22	29
WED	2	9	16	23	30
THUR	3	10	17	24	31
FRI	4	11	18	25	-
SAT	5	12	19	26	-

SUN	-	3	10	17	24
MON	-	4	11	18	25
TUES	-	5	12	19	26
WED	-	6	13	20	27
THUR	-	7	14	21	28
FRI	1	8	15	22	29
SAT	2	9	16	23	30

OUR AIM — GOOD MILK — GOOD SERVICE — GOOD HEALTH



"HAPPY DAYS"
R.M.S.

Stevensons' Dairy Farms
CUMNOCK ————— Tel. 3255/6

*"... I do like to be beside the seaside,
I do like to be beside the sea."*
GLOVER-KIND.

MAY

1960

JUNE

SUN	1	8	15	22	29
MON	2	9	16	23	30
TUES	3	10	17	24	31
WED	4	11	18	25	-
THUR	5	12	19	26	-
FRI	6	13	20	27	-
SAT	7	14	21	28	-

SUN	-	5	12	19	26
MON	-	6	13	20	27
TUES	-	7	14	21	28
WED	1	8	15	22	29
THUR	2	9	16	23	30
FRI	3	10	17	24	-
SAT	4	11	18	25	-

CERTIFIED, TUBERCULIN TESTED and PASTEURISED MILK FRESH FROM OUR FARMS

CHANGUE and BANKEND

Ayrshire Herds

Established at
Changue, 1870

One of the Oldest Ayrshire Stocks

Milk Recorded
since 1910

LEADING HONOURS

at

AYR and LANARK PEDIGREE AYRSHIRE BULL SALES



Bankend 'Cable'

AYR—Nov. 3rd 1959

BANKEND 'CABLE' (144860)

SIRE—Bankend 'Parade' (100892) 'App.'
by Lessnessock 'Pendragon' (92322) 'App.'

DAM—Bankend 'Lady Flora 3rd' (32076)
by Barwheys 'Bulletin' (101876)

First Prize Junior Bull and Winner of 'The Craig
Championship Trophy' purchased by Aberdeen and
District Milk Marketing Board at the top price of
the Sale.

LANARK—Nov. 10th 1959

CHANGUE 'CHEER UP' (144857)

SIRE—Changue 'Valiant' (135633)
by Burnockstone 'Supreme Effort' (127654)

DAM—Changue 'Petula' (362828)
by Changue 'Majestic' (86415)

First Prize Junior Bull purchased by The Scottish
Milk Marketing Board at the top price of the Sale.



Changue 'Cheer Up'

NOTE—The BANKEND HERD was also placed SECOND in the SENIOR CLASS at Ayr with BANKEND 'CAREFREE' which was purchased by CAPTAIN BOWSER, Argaty, Doune, Perthshire. Incidentally we are indebted to Captain Bowser for the picture of his two Clydesdale Geldings in Ploughing Match array which appears on the cover page of this Calendar. They were first prize winners at the International Ploughing Contest at Edinburgh.



"THE CLIPPING"
AT PRIESTHILL, MUIRKIRK

Stevenson's Dairy Farms
CUMNOCK ————— Tel. 3255/6

*O, may thou ne'er forgather up,
Wi' ony blastit, moorland toop,
But aye keep mind to moop an' mell,
Wi' sheep o' credit like thysel!*
ROBERT BURNS.

JULY

1960

AUGUST

SUN	3	10	17	24	31
MON	4	11	18	25	-
TUES	5	12	19	26	-
WED	6	13	20	27	-
THUR	7	14	21	28	-
FRI	1	8	15	22	29
SAT	2	9	16	23	30

SUN	-	7	14	21	28
MON	1	8	15	22	29
TUES	2	9	16	23	30
WED	3	10	17	24	31
THUR	4	11	18	25	-
FRI	5	12	19	26	-
SAT	6	13	20	27	-

MILK BOTTLES ARE PRECIOUS ————— PLEASE RETURN THEM DAILY



"GOOD COMPANIONS"

Stevensons' Dairy Farms

CUMNOCK ————— Tel. 3255/6

*Three little maids from school are we,
Pett as a schoolgirl well can be.*

W. S. GILBERT.

SEPTEMBER

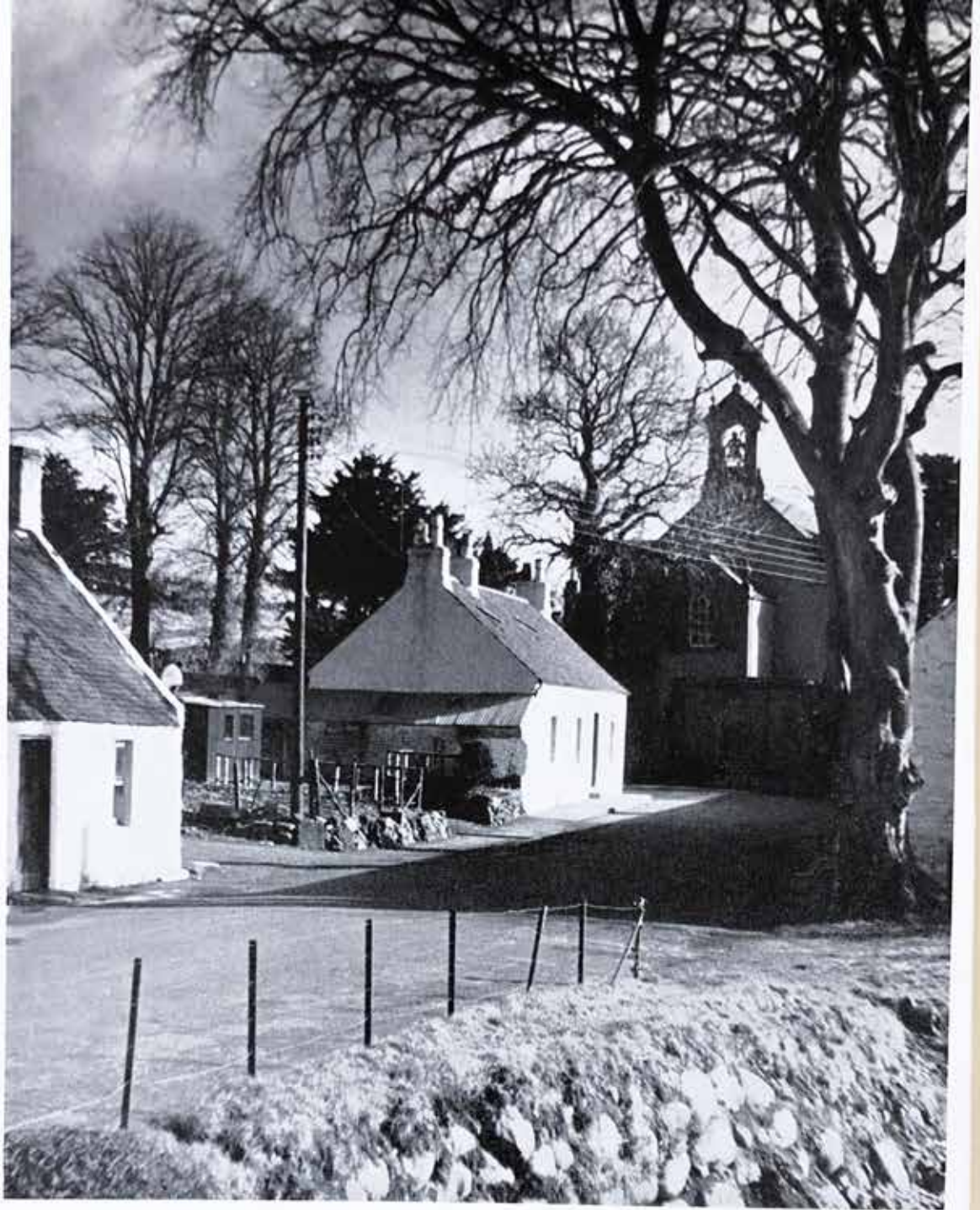
SUN	-	4	11	18	25
MON	-	5	12	19	26
TUES	-	6	13	20	27
WED	-	7	14	21	28
THUR	1	8	15	22	29
FRI	2	9	16	23	30
SAT	3	10	17	24	-

1960

OCTOBER

SUN	2	9	16	23	30
MON	3	10	17	24	31
TUES	4	11	18	25	-
WED	5	12	19	26	-
THUR	6	13	20	27	-
FRI	7	14	21	28	-
SAT	1	8	15	22	29

A wide range of FIRST QUALITY GOODS is available from our MODERN BAKERY—BRIDESCAKES a SPECIALITY



KIRKMICHAEL
(Ayrshire)

Photographed by Mr J. K. Muir, Cumnock and District Camera Club. Winning entry in our Calendar Picture Competition.

Stevensons' Dairy Farms
CUMNOCK ————— Tel. 3255/6

*Poems are made by fools like me,
But only God can make a tree.*
JOYCE KILMER.

NOVEMBER

SUN	-	6	13	20	27
MON	-	7	14	21	28
TUES	1	8	15	22	29
WED	2	9	16	23	30
THUR	3	10	17	24	-
FRI	4	11	18	25	-
SAT	5	12	19	26	-

1960



DECEMBER

SUN	-	4	11	18	25
MON	-	5	12	19	26
TUES	-	6	13	20	27
WED	-	7	14	21	28
THUR	1	8	15	22	29
FRI	2	9	16	23	30
SAT	3	10	17	24	31

THE ROYAL HOTEL for WEDDINGS, DANCES and SOCIAL FUNCTIONS

Breeding for . . .

Confirmation, High Yields and Butter Fat

MOTHER

BANKEND 'WHITE ROSE 3RD' (207275)

by Bankend 'Masterstroke' (86407) 'App.'

Milk Records—

20/7/52,	9819 lbs.	@ 4.83%	b.f. in 345 days
18/8/53,	12571 "	@ 4.69%	" " 297 "
14/9/54,	13768 "	@ 4.75%	" " 286 "
3/11/55,	15268 "	@ 4.53%	" " 314 "
1/1/57,	15184 "	@ 5.25%	" " 297 "
27/1/58,	13422 "	@ 4.59%	" " 341 "
17/4/59,	13422 "	@ 4.86%	" " 240 "

Still milking 28½ lbs.

SCOTTISH DAIRY SHOW, Feb. 1957:

'WHITE ROSE 3rd' was FIRST PRIZE in the MILKING TRIALS with a yield of 81.8 lbs. @ 5.02% b.f. and SECOND PRIZE for INSPECTION in the class for VETERAN COWS. She was also A MEMBER OF THE TEAM OF SIX COWS which won the 'CRAIG TROPHY.'

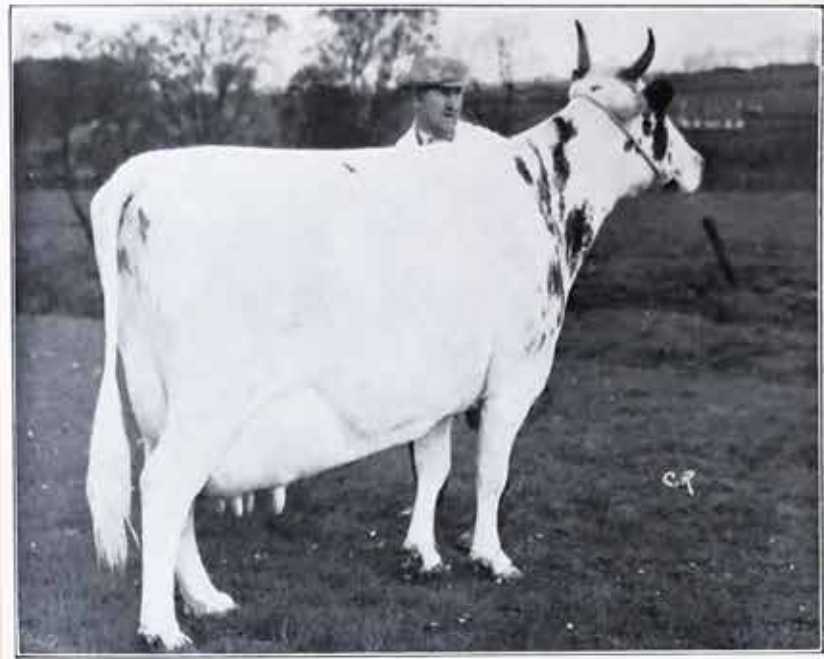
MAYBOLE SHOW, Aug. 1959: FIRST PRIZE INSPECTION MILK RECORD CLASS and WINNER of THE BARGOWER CUP.

'WHITE ROSE 3rd' is the dam of—

BANKEND 'SIGNET' (122716) FIRST PRIZE SENIOR BULL at AYR SALE, 1954 purchased by R. Dinnie, Glasforest, Aberdeen.

BANKEND 'TRUE LINE' (127902) exported to Mrs. Morton, Ingleside, New Zealand in 1955. Note: 'True Line's' progeny made the highest prices for Ayrshires sold in New Zealand last year.

BANKEND 'CHALLENGE' FIRST PRIZE SENIOR BULL at AYR SALE, March 1959.



Bankend 'White Rose 3rd'



Bankend 'Challenge'

and SON

BANKEND 'CHALLENGE' (142203)

Sire— Lessnessock 'Pendragon' (92322) 'App.'
by Low Milton 'Touchstone' (47541) 'App.'

Dam—Bankend 'White Rose 3rd' (207275)
by Bankend 'Masterstroke' (86407) 'App.'

FIRST PRIZE SENIOR BULL purchased by Mr. William Cottam, Rottington Hall, Whitehaven at SECOND TOP PRICE of the SALE.

HONOURS LIST:

Change and Bankend Herds have been leading prize winners at both Ayr and Lanark Sales for many years.

1946	Lanark	First Prize Senior	1950	Ayr	Third Prize Junior	1955	Ayr	First Prize Senior
	Ayr	First Prize Junior		Lanark	Second Prize Junior			Third Prize Junior
1947	Ayr	RESERVE CHAMPION	1951	Ayr	Second and Third Prize Junior	1956	Ayr	First Prize
		Second Prize Junior	1952	Lanark	First Prize Group of Three	1957	Ayr	First and Second Prizes
	Lanark	First and Third Prize Junior			Second Prize Junior	1958	Ayr	First Prize
1948	Ayr	CHAMPION	1953	Ayr	CHAMPION		Lanark	Third Prize Junior Bull
		First Prize Junior			RESERVE CHAMPION	1959	Ayr	First Prize Senior
	Lanark	First Prize Junior			First Prize Junior			CHAMPION
1949	Lanark	First Prize Junior	1954	Ayr	First Prize Senior			First Prize Junior
		Second Prize Junior		Lanark	Second Prize Junior		Lanark	Second Prize Senior
1950	Ayr	RESERVE CHAMPION	1955	Ayr	CHAMPION			First Prize Junior
		First and Second Prize Senior						

Stevensons' Dairy Farms

PARTNERS: J. STEVENSON, M.B.E. J. M. STEVENSON W. S. STEVENSON

Producers and Distributors
of
Certified, Tuberculin Tested
and Pasteurised Milk

Suppliers of Milk to Schools
Hospitals and Canteens

REGISTERED OFFICE:

42 AYR ROAD
CUMNOCK

TELEPHONE 3255/6

Bakers • Confectioners
and Caterers

Dairy Farms:
CHANGUE (Tel. 3027)
BANKEND (Tel. 3101)
CROFHEAD (Tel. 2241)

CALENDAR 1960

JANUARY	FEBRUARY	MARCH	APRIL	MAY	JUNE
Su. - 3 10 17 24 31	Su. - - 7 14 21 28	Su. - - 6 13 20 27	Su. - - 3 10 17 24	Su. - 1 8 15 22 29	Su. - - 5 12 19 26
Mn. - 4 11 18 25 -	Mn. - 1 8 15 22 29	Mn. - - 7 14 21 28	Mn. - - 4 11 18 25	Mn. - 2 9 16 23 30	Mn. - - 6 13 20 27
Tu. - 5 12 19 26 -	Tu. - 2 9 16 23 -	Tu. - 1 8 15 22 29	Tu. - - 5 12 19 26	Tu. - 3 10 17 24 31	Tu. - - 7 14 21 28
Wd. - 6 13 20 27 -	Wd. - 3 10 17 24 -	Wd. - 2 9 16 23 30	Wd. - - 6 13 20 27	Wd. - 4 11 18 25 -	Wd. - 1 8 15 22 29
Th. - 7 14 21 28 -	Th. - 4 11 18 25 -	Th. - 3 10 17 24 31	Th. - - 7 14 21 28	Th. - 5 12 19 26 -	Th. - 2 9 16 23 30
Fr. 1 8 15 22 29 -	Fr. - 5 12 19 26 -	Fr. - 4 11 18 25 -	Fr. - 1 8 15 22 29	Fr. - 6 13 20 27 -	Fr. - 3 10 17 24 -
Sa. 2 9 16 23 30 -	Sa. - 6 13 20 27 -	Sa. - 5 12 19 26 -	Sa. - 2 9 16 23 30	Sa. - 7 14 21 28 -	Sa. - 4 11 18 25 -

CALENDAR 1961

JANUARY	FEBRUARY	MARCH	APRIL	MAY	JUNE
Su. - 1 8 15 22 29	Su. - - 5 12 19 26	Su. - - 5 12 19 26	Su. - 2 9 16 23 30	Su. - - 7 14 21 28	Su. - - 4 11 18 25
Mn. - 2 9 16 23 30	Mn. - - 6 13 20 27	Mn. - - 6 13 20 27	Mn. - 3 10 17 24 31	Mn. - 1 8 15 22 29	Mn. - - 5 12 19 26
Tu. - 3 10 17 24 31	Tu. - - 7 14 21 28	Tu. - - 7 14 21 28	Tu. - 4 11 18 25 -	Tu. - 2 9 16 23 30	Tu. - - 6 13 20 27
Wd. - 4 11 18 25 -	Wd. - 1 8 15 22 -	Wd. - 1 8 15 22 29	Wd. - 5 12 19 26 -	Wd. - 3 10 17 24 31	Wd. - - 7 14 21 28
Th. - 5 12 19 26 -	Th. - 2 9 16 23 -	Th. - 2 9 16 23 30	Th. - 6 13 20 27 -	Th. - 4 11 18 25 -	Th. - 1 8 15 22 29
Fr. - 6 13 20 27 -	Fr. - 3 10 17 24 -	Fr. - 3 10 17 24 31	Fr. - 7 14 21 28 -	Fr. - 5 12 19 26 -	Fr. - 2 9 16 23 30
Sa. - 7 14 21 28 -	Sa. - 4 11 18 25 -	Sa. - 4 11 18 25 -	Sa. 1 8 15 22 29 -	Sa. - 6 13 20 27 -	Sa. - 3 10 17 24 -

LETTER POSTAGE

Not exceeding 1 oz. 3d.
" 2 oz. 4d.
Each additional 2 oz. 1d.
No letter to be above 2 ft. in length
or 18 ins. in width or depth.

In form of roll 3 feet 3 inches for
length and twice the diameter combined
(2 feet 8 inches for the greatest
dimension).

POST CARD RATE

For every postcard 2d.
" reply post card 5d.

PARCEL POST

Not exceeding 2 lbs. 1/6
" 3 lbs. 1/9
" 4 lbs. 2/-
" 5 lbs. 2/3
" 6 lbs. 2/6
" 7 lbs. 2/9
" 8 lbs. 3/-
" 11 lbs. 3/3
" 15 lbs. (max.) 3/6

Greatest length, 3 feet 6 inches.

Greatest length and girth combined,
6 feet.

REGISTERED PACKETS (PARCELS INCLUDED)

A fee of 1/- insures to the amount
of £10; £20 1/1; £40 1/2; £60 1/3;
£80 1/4; and so on up to £400 at the
rate of an additional 1d. for each £20.

REGISTERED NEWS. RATE

Not exceeding 6 oz. (per copy) .. 2 1/2d.
Every additional 6 oz. (per copy) 1 1/2d.
Maximum Weight 2 lbs.

PRINTED PAPER RATE

Not exceeding 2 oz. 2d.
" " 4 oz. 4d.
Each additional 2 oz. 1d.
Sizes same as for letter postage.

BLIND LITERATURE RATE

Not exceeding 2 lbs. 1/2d.
" 5 " 1d.
" 8 " 1 1/2d.
" 11 " 2d.
" 15 " (max.) 2 1/2d.
Sizes same as for letter postage.

MONEY ORDERS

INLAND - Sums not exceeding
up to | £20, 1/2 | £40, 1/6
£10, 1/- | £30, 1/4 | £50, 1/8

No single order can be issued for a
sum exceeding £50.

No order may contain a fraction
or part of a penny.

POSTAL ORDERS

s. d. Chge.	s. d. Chge.
For 0 6.... 2d.	For 11 0.... 3d.
" 1 0.... 2d.	" 12 0.... 3d.
" 1 6.... 3d.	" 13 0.... 3d.
" 2 0.... 3d.	" 14 0.... 3d.
" 2 6.... 3d.	" 15 0.... 3d.
" 3 0.... 3d.	" 16 0.... 3d.
" 3 6.... 3d.	" 17 0.... 3d.
" 4 0.... 3d.	" 18 0.... 3d.
" 4 6.... 3d.	" 19 0.... 3d.
" 5 0.... 3d.	" 20 0.... 3d.
" 6 0.... 3d.	" 21 0.... 3d.
" 7 0.... 3d.	" 40 0.... 6d.
" 8 0.... 3d.	" 60 0.... 6d.
" 9 0.... 3d.	" 80 0.... 6d.
" 10 0.... 3d.	" 100 0.... 6d.

Orders must be cashed within six
months of last day of month in which
issued. Sender must fill in name of
person to whom Order is sent, and he
can also fill in the name of any par-
ticular Post Office and Order will
be cashed at that Office only.

INLAND TELEGRAMS

12 words 3/-; and every additional
word, 3d. Eire, 12 words for 3/6.
and every additional word, 3d.

BILLS AND PROMISSORY NOTES

BILLS OF EXCHANGE payable on demand or at sight, or on
presentation..... 2d.

BILL OF EXCHANGE of any other kind whatsoever (except a bank
note) and PROMISSORY NOTE of any kind whatsoever (except
a bank note) - drawn, or expressed to be payable, or actually
paid, or endorsed, or in any way negotiated in the United
Kingdom, where the amount or value of the money for
which the bill or note is drawn or made.

	s. d.
Does not exceed.....	£10..... 0 2
Exceeds £10 and does not exceed	25..... 0 3
" 25 " "	50..... 0 6
" 50 " "	75..... 0 9
" 75 " "	100..... 1 0

And 1s. for every additional £100 or fractional part of £100.

QUARTERLY TERMS

IN SCOTLAND	IN ENGLAND
Candlemas..... Feby. 2	Lady Day..... Mar. 25
Whitsunday..... May 15	Midsummer..... June 24
Lammas..... Aug. 1	Michaelmas..... Sept. 29
Martinmas..... Nov. 11	Christmas..... Dec. 25

BANK HOLIDAYS

New Year's Day, Good Friday, First Monday in May,
First Monday in August, and Christmas.

ACKNOWLEDGMENT:

May we express our thanks for the many helpful comments and letters of appreciation received each year
from customers concerning the Calendar.