

ENGLAND

GOOD FRIDAY March 27
 MONDAY March 30
 MONDAY May 18
 MONDAY Aug 3
 CHRISTMAS Dec 25
 SATURDAY Dec 26

JANUARY

4 11 18 25
 5 12 19 26
 6 13 20 27
 7 14 21 28
 Th 1 8 15 22 29
 F 2 9 16 23 30
 S 3 10 17 24 31

MAY

3 10 17 24 31
 M 4 11 18 25
 T 5 12 19 26
 W 6 13 20 27
 Th 7 14 21 28
 F 1 8 15 22 29
 S 2 9 16 23 30

1959

NEW YEAR
 GOOD FRIDAY
 MONDAY
 MONDAY
 CHRISTMAS

APRIL

S 5 12 19 26
 M 6 13 20 27
 T 7 14 21 28
 W 1 8 15 22 29
 Th 2 9 16 23 30
 F 3 10 17 24 31
 S 4 11 18 25

AUGUST

S 2 9 16 23 30
 M 3 10 17 24 31
 T 4 11 18 25
 W 5 12 19 26
 Th 6 13 20 27
 F 7 14 21 28
 S 1 8 15 22 29

DECEMBER

6
 7
 T 1 8
 W 2 9
 Th 3 10



"Coming...?"

SEPTEMBER

S 6 13 20 27 30
 M 7 14 21 28
 T 1 8 15 22 29
 W 2 9 16 23 30

OCTOBER

S 4 11 18 25
 M 5 12 19 26
 T 6 13 20 27
 W 7 14 21 28
 Th 8 15 22 29

NOVEMBER

S 1 8 15 22 29
 M 2 9 16 23 30
 T 3 10 17 24
 W 4 11 18 25
 Th 5 12 19 26

With the Compliments of . . .

J., J. & W. STEVENSON

"The threshold is the place of expectation."

Goethe.

. . . your dairy people

Fine Weather

on both evenings contributed to the attendance and enabled everyone to move freely about the steading. Visitors were conducted through the Dairy in groups and the function of each piece of equipment was explained and, where possible, demonstrated.

1. Buses were chartered to enable visitors to get to and from the Farm conveniently.
2. Isobel Stevenson describes the first stage—Reception. Here the Milk is Sampled and Weighed on arrival from the Farms.
3. After the tour—a glass of milk or a cup of tea.

Photograph numbers 2 and 5 by *Farming News*.



4. A busy thoroughfare—right, the Staff Canteen where Milk Cookery Demonstrations were conducted by Miss Adams of the S.M.M.B.
5. Barbara Kerr demonstrates how bottles proceed through the Bottle Washing Machine.
6. At a Cattle Show?—No, a Farm Visit.

DISPLAYS and DEMONSTRATIONS



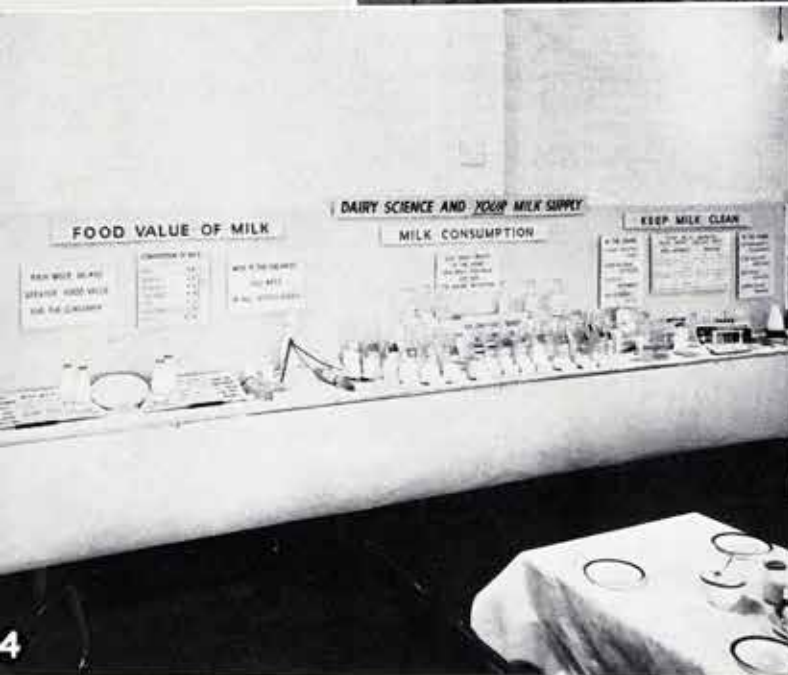
1. Our Bakery Department arranged this Display and provided 500 dozen Cakes and Scones for the Teas.

2. Mr Duncan of the Electricity Board discusses domestic refrigeration with Mr R. B. Lorimer, Town Chamberlain, and Mrs Lorimer.

3. A section of the shed which accommodated the Displays and in which Teas were served.

4. The College exhibit created considerable interest. Miss Orr and Mr McLarty of the Milk Utilisation Department were in attendance.

5. How much does a cow consume and produce (a) per day (b) per year? This display provided the answers, suitably illustrated.



Acknowledgment

Our thanks are due to the Scottish Milk Marketing Board, the West of Scotland Agricultural College, the South of Scotland Electricity Board, and Cumnock Town Council, for their valuable contributions to the success of the venture.



HORSE POWER

Stevensons' Dairy Farms
CUMNOCK ————— Tel. 3255/6

*Ye rigid ploughmen, bear in mind
Your labour is for future hours:
Advance—spare not—nor look behind—
Plough deep and straight with all your powers.
R. H. HOME.*

JANUARY

SUN	-	4	11	18	25
MON	-	5	12	19	26
TUES	-	6	13	20	27
WED	-	7	14	21	28
THUR	1	8	15	22	29
FRI	2	9	16	23	30
SAT	3	10	17	24	31

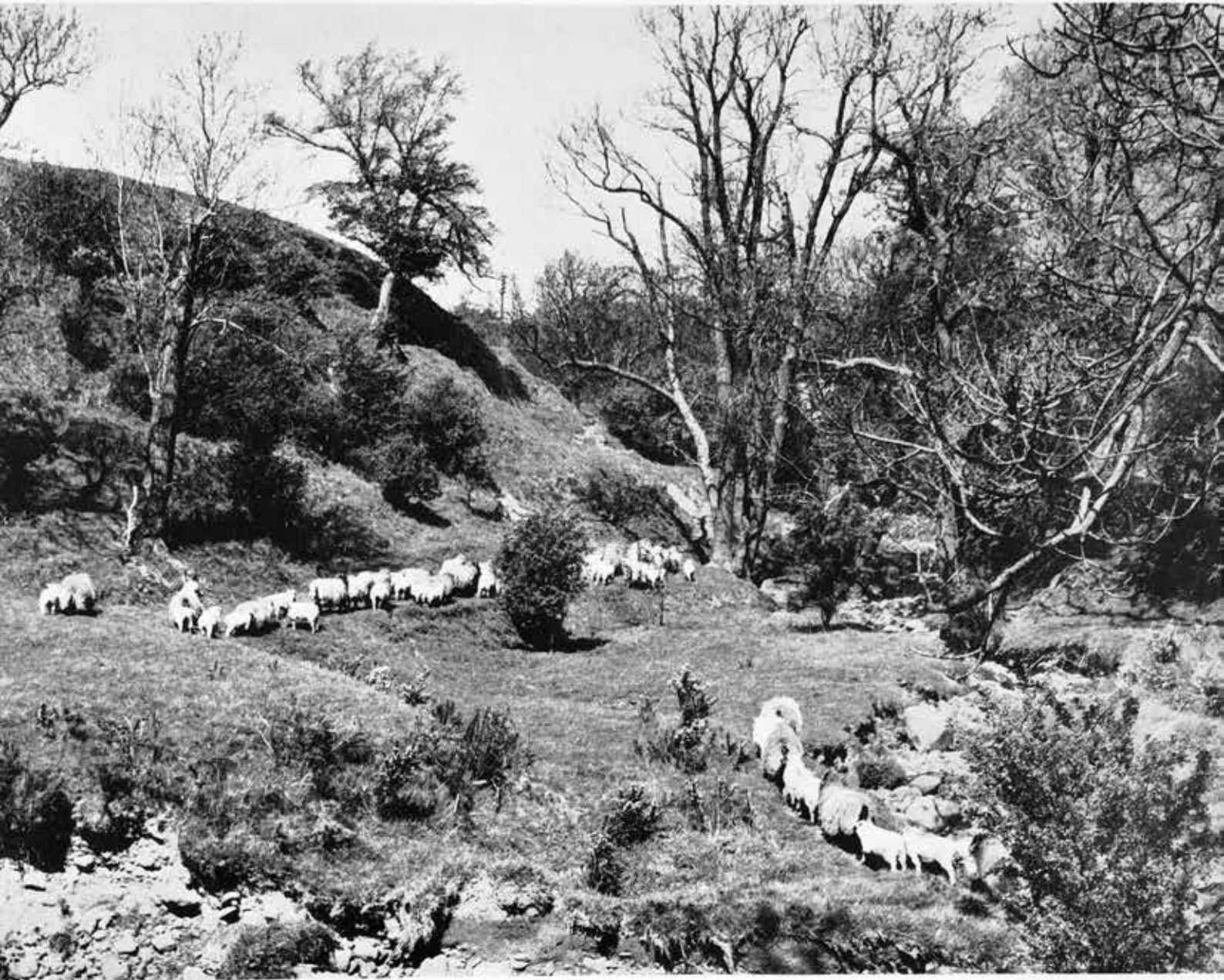
1959

FEBRUARY

SUN	-	1	8	15	22
MON	-	2	9	16	23
TUES	-	3	10	17	24
WED	-	4	11	18	25
THUR	-	5	12	19	26
FRI	-	6	13	20	27
SAT	-	7	14	21	28

The Royal Hotel for weddings, receptions and functions of all kinds.

'Phone Cumnock 3024



ROSEBURN GLEN, CUMNOCK

Stevensons' Dairy Farms
CUMNOCK ————— Tel. 3255/6

*In mony a neuk the primrose lies hid frae stranger een,
An' the broom on the knowes is wavin' wi' its cludin o'
gowd and green.*

LADY JOHN SCOTT.

MARCH

1959

APRIL

SUN	1	8	15	22	29
MON	2	9	16	23	30
TUES	3	10	17	24	31
WED	4	11	18	25	-
THUR	5	12	19	26	-
FRI	6	13	20	27	-
SAT	7	14	21	28	-

SUN	-	5	12	19	26
MON	-	6	13	20	27
TUES	-	7	14	21	28
WED	1	8	15	22	29
THUR	2	9	16	23	30
FRI	3	10	17	24	-
SAT	4	11	18	25	-

A complete range of top quality goods is produced in our Bakery



THE PUDDOCK BURN, CATRINE

Stevenson's Dairy Farms
CUMNOCK ————— Tel: 3255/6

*There the pools are bright and deep
Where the grey trout lies asleep
Up the River and over the lea,
That's the place for Billy and me.*

HOGG.

MAY

1959

JUNE

SUN	3	10	17	24	31
MON	4	11	18	25	-
TUES	5	12	19	26	-
WED	6	13	20	27	-
THUR	7	14	21	28	-
FRI	1	8	15	22	29
SAT	2	9	16	23	30

SUN	-	7	14	21	28
MON	1	8	15	22	29
TUES	2	9	16	23	30
WED	3	10	17	24	-
THUR	4	11	18	25	-
FRI	5	12	19	26	-
SAT	6	13	20	27	-

Rich Pastures and Healthy Stocks ensure the high quality of our Milk Supply



AN OCHILTREE LANDSCAPE

Stevenson's Dairy Farms
CUMNOCK ————— Tel. 3255/6

*Ane tae gnaw; ane tae saw;
Ane to pay the laird witha'.*
OLD SCOTS.

JULY

1959

AUGUST

SUN	-	5	12	19	26
MON	-	6	13	20	27
TUES	-	7	14	21	28
WED	1	8	15	22	29
THUR	2	9	16	23	30
FRI	3	10	17	24	31
SAT	4	11	18	25	-

SUN	2	9	16	23	30
MON	3	10	17	24	31
TUES	4	11	18	25	-
WED	5	12	19	26	-
THUR	6	13	20	27	-
FRI	7	14	21	28	-
SAT	1	8	15	22	29

Cream makes the Meal—and its Good Value



"A GARDEN IS A LOVESOME THING...."

Stevenson's Dairy Farms

CUMNOCK

Tel. 3255/6

AT HOME AT CHANGUE. "... the quiet peace of the beautiful garden extended an irresistible appeal!"
THE CUMNOCK CHRONICLE

SEPTEMBER

1959

OCTOBER

SUN	-	6	13	20	27
MON	-	7	14	21	28
TUES	1	8	15	22	29
WED	2	9	16	23	30
THUR	3	10	17	24	-
FRI	4	11	18	25	-
SAT	5	12	19	26	-

SUN	-	4	11	18	25
MON	-	5	12	19	26
TUES	-	6	13	20	27
WED	-	7	14	21	28
THUR	1	8	15	22	29
FRI	2	9	16	23	30
SAT	3	10	17	24	31

Our Dairy premises at Changue may be visited by customers at any time



GOOD COMPANIONS

"The little dog laughed to see such fun . . ."

Stevenson's Dairy Farms

CUMNOCK

Tel. 3255/6

NOVEMBER

1959

DECEMBER

SUN	1	8	15	22	29
MON	2	9	16	23	30
TUES	3	10	17	24	-
WED	4	11	18	25	-
THUR	5	12	19	26	-
FRI	6	13	20	27	-
SAT	7	14	21	28	-

SUN	-	6	13	20	27
MON	-	7	14	21	28
TUES	1	8	15	22	29
WED	2	9	16	23	30
THUR	3	10	17	24	31
FRI	4	11	18	25	-
SAT	5	12	19	26	-

Please Rinse and Return your empty Milk Bottles every Day

CHANGUE and BANKEND

Ayrshire Herds

Established at
Changue, 1870

One of the Oldest Ayrshire Stocks

Milk Recorded
since 1910

YOUNG STOCK EXPORTED IN 1958

To NORWAY—

In May of this year a Norwegian Buying Commission visited this country with the object of purchasing a number of young Ayrshire Bulls. Of the eleven selected, three were from our Bankend Herd.

BANKEND 'WEDGEWOOD' (141189) by Changue 'Unity' (132318)

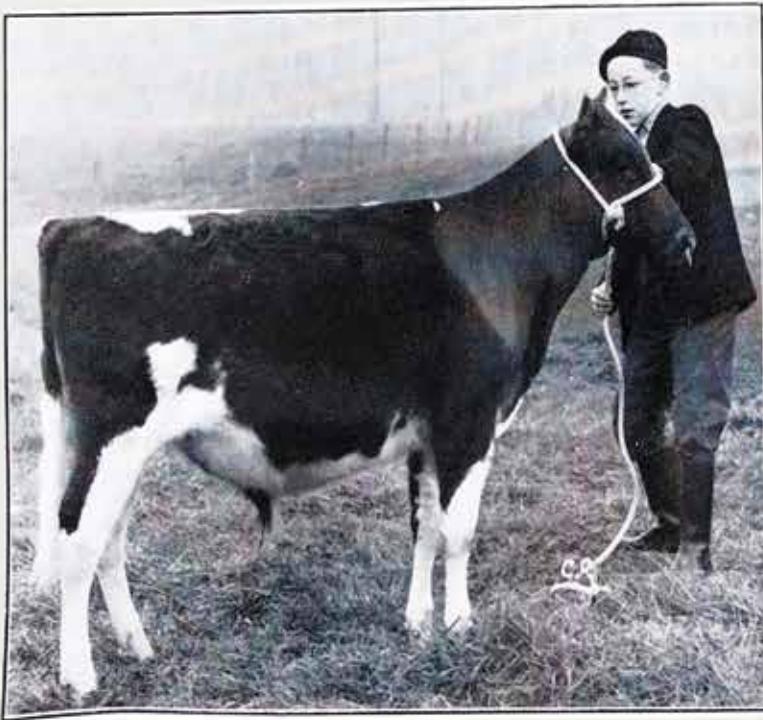
His Dam, Bankend 'Sunray 4th' (460749), gave 11629 lbs. milk at 4.08% b.f. in 337 days as a heifer and is now in her second lactation.

BANKEND 'WISDOM' (142127) by Bankend 'Parade' (100892) 'App.'

His Dam, Bankend 'White Rose 4th' (207276), now in her seventh lactation, has averaged 10472 lbs. milk at 4.19% b.f. in 6 lactations.

BANKEND 'CRUSADER' (142126) by Lessnessock 'Pendragon' (92322) 'App.'

His dam, Bankend 'Mary' (32451), now in her eleventh lactation, has averaged 10758 lbs. milk at 4.70% b.f. in 10 lactations.



Bankend "Classic"

To SOUTH AFRICA—

BANKEND 'CLASSIC'
(142884)

by Lessnessock 'Pendragon'

His Dam, Bankend 'Mayflower' (411999) gave 10333 lbs. milk at 4.14% b.f. as a heifer and is now in her second lactation. She was **Third Prize Heifer in Milk** at the Scottish Dairy Show in 1957.

Bankend 'Classic' was sold in November to Mr C. Malleson, Silverton, Transvaal.

We are always interested to learn of the progress of animals which have gone overseas from our Herds and recent reports from two purchasers of Bulls in New Zealand have been most encouraging. We understand that the progeny of both bulls are already showing considerable promise.

We were pleased to see many well known personalities in Local Government, Farming and Dairying Circles:—

1. Among those waiting to sample Full Cream Dairy Ices from the Board's Roving Milk Bar were Mr Frank J. M. Reid, Secretary, Scottish Association of Producer Retailers; Dr. Laird and Mr R. W. Paterson of the College Advisory Service and Mr H. D. Brown of Ochiltree Mains, Convener, Milk Committee, The National Farmers' Union.
2. Three-Year-Old Sheila Watt and her mother, from Coyllon.
3. Miss Sheila Demarco, in charge of the Roving Milk Bar (She dispensed over 2000 of those cones each evening!)
4. From L. to R.—Mr Ivy McCaig, County Clerk and Mr Greenlaw, Chief Sanitary Inspector; Mr Alex. Paterson of Messrs A. Paterson & Sons, Grain Merchants, Kilmarnock, Mr Jacob S. Murray, formerly of Dalgig and prominent Ayrshire Breeder; and Mr Stewart Gilmour, C.A., Secretary of Ayrshire Dairymen's Association and of the Ayr Area Executive N.F.U.



5. Bailie Cowan of Messrs Laverie & Laurie, and Mr Peter McClusky of Lochside Dairies, discuss a Bottling Machine with Morag Walker and Jessie Houston. Bailie Cowan is Chairman, Ayrshire Dairymen's Association.
6. Mr John G. Inglis (on the right), General Manager of the Scottish Milk Marketing Board, with Mr John Stevenson.

Photograph numbers 1, 2, and 3 by *Farming News*, and number 5 by *Ayr Advertiser*.

At Home at Changue

during

SCOTTISH WEEK, SEPTEMBER, 1958

Highlight of a Busy Year

For many years it has been our pleasure to welcome VISITORS from HOME and ABROAD but never before have we entertained on such a scale as in 1958. We had visitors from Iceland, Canada, the United States, Norway, Nigeria and Australia; but perhaps most important of all we had some 4,000 from Ayrshire.

The occasion was our third 'AT HOME,' held on the evenings of 2nd and 3rd September and arranged this time as part of the contribution of the National Farmers' Union to Scottish Week. We feel it is our duty to hold 'OPEN HOUSE' occasionally and let our customers see for themselves the conditions under which their milk is produced, bottled and distributed.

A variety of displays and demonstrations was organised. The West of Scotland College of Agriculture dealt with the Care of Milk at the Farm, in the Dairy and in the Home and the South of Scotland Electricity Board with the Economics of Domestic Refrigeration. The Scottish Milk Marketing Board organised a non-stop series of Milk Cookery Demonstrations, so popular that the "House Full" notice was in constant use, and the Board's Roving Milk Bar proved such an attraction that the Staff had to be augmented to cope with the demand for Full Cream Dairy Ices.



Photo by Scottish Farmer

The Hosts—An informal family group with Mr R. D. Hunter, Town Clerk of Cumnock, on the right.

Other displays dealt with the Quantity of Food Consumed Daily by a Cow and the amount of Cream, Butter and Cheese which could be manufactured from the milk produced; our Bakery Department had on show a full range of Bakery Goods; and, of course, members of Staff were standing by to demonstrate the Dairy Plant and Equipment and to explain the various processes. Many visitors took the opportunity to have a look at the Changue Herd grazing in fields adjacent to the Steading.

Not the least popular section was that in which Teas were served by the Hotel and Catering Staffs.

These features, most of which are illustrated on other pages of this Calendar, combined to provide for our guests a full and interesting evening and there were many expressions of appreciation and thanks.

The support which our efforts received far exceeded our expectations and it was most encouraging for us all—Staff and Partners alike—to see our Customers there in such large numbers.

An event of this kind could not have been organised and carried through successfully without the enthusiastic co-operation of a loyal staff and we gladly pay tribute to their untiring efforts on this memorable occasion.

Aye Ready

Come in the evening, or come in the morning,
Come when you're looked for,
or come without warning.

T. O. DAVIES.



Photo by Mr R. M. Patterson

Overseas Visitors—A Party of Native Chiefs from Northern Nigeria on a tour sponsored by the British Council.

Stevensons' Dairy Farms

Cumnock

CALENDAR 1959

JANUARY		FEBRUARY		MARCH		APRIL		MAY		JUNE	
Su.	4 11 18 25	Su.	1 8 15 22	Su.	1 8 15 22 29	Su.	5 12 19 26	Su.	3 10 17 24 31	Su.	7 14 21 28
Mn.	5 12 19 26	Mn.	2 9 16 23	Mn.	2 9 16 23 30	Mn.	6 13 20 27	Mn.	4 11 18 25	Mn.	1 8 15 22 29
Tu.	6 13 20 27	Tu.	3 10 17 24	Tu.	3 10 17 24 31	Tu.	7 14 21 28	Tu.	5 12 19 26	Tu.	2 9 16 23 30
Wd.	7 14 21 28	Wd.	4 11 18 25	Wd.	4 11 18 25	Wd.	1 8 15 22 29	Wd.	6 13 20 27	Wd.	3 10 17 24
Th.	1 8 15 22 29	Th.	5 12 19 26	Th.	5 12 19 26	Th.	2 9 16 23 30	Th.	7 14 21 28	Th.	4 11 18 25
Fr.	2 9 16 23 30	Fr.	6 13 20 27	Fr.	6 13 20 27	Fr.	3 10 17 24	Fr.	1 8 15 22 29	Fr.	5 12 19 26
Sa.	3 10 17 24 31	Sa.	7 14 21 28	Sa.	7 14 21 28	Sa.	4 11 18 25	Sa.	2 9 16 23 30	Sa.	6 13 20 27

CALENDAR 1960

JANUARY		FEBRUARY		MARCH		APRIL		MAY		JUNE	
Su.	3 10 17 24 31	Su.	7 14 21 28	Su.	6 13 20 27	Su.	3 10 17 24	Su.	1 8 15 22 29	Su.	5 12 19 26
Mn.	4 11 18 25	Mn.	1 8 15 22 29	Mn.	7 14 21 28	Mn.	4 11 18 25	Mn.	2 9 16 23 30	Mn.	6 13 20 27
Tu.	5 12 19 26	Tu.	2 9 16 23	Tu.	1 8 15 22 29	Tu.	5 12 19 26	Tu.	3 10 17 24 31	Tu.	7 14 21 28
Wd.	6 13 20 27	Wd.	3 10 17 24	Wd.	2 9 16 23 30	Wd.	6 13 20 27	Wd.	4 11 18 25	Wd.	1 8 15 22 29
Th.	7 14 21 28	Th.	4 11 18 25	Th.	3 10 17 24 31	Th.	7 14 21 28	Th.	5 12 19 26	Th.	2 9 16 23 30
Fr.	1 8 15 22 29	Fr.	5 12 19 26	Fr.	4 11 18 25	Fr.	1 8 15 22 29	Fr.	6 13 20 27	Fr.	3 10 17 24
Sa.	2 9 16 23 30	Sa.	6 13 20 27	Sa.	5 12 19 26	Sa.	2 9 16 23 30	Sa.	7 14 21 28	Sa.	4 11 18 25

LETTER POSTAGE

Not exceeding 1 oz. 3d.
 " " " 2 oz. 4d.
 Each additional 2 oz. 1d.
 No letter to be above 2 ft. in length or 18 ins. in width or depth.
 In form of roll 3 feet 3 inches for length and twice the diameter combined (2 feet 8 inches for the greatest dimension).

POST CARD RATE

For every postcard 2d.
 " " reply post card 5d.

PARCEL POST

Not exceeding 2 lbs. 1/6
 " 3 lbs. 1/9
 " 4 lbs. 2/-
 " 5 lbs. 2/3
 " 6 lbs. 2/6
 " 7 lbs. 2/9
 " 8 lbs. 3/-
 " 11 lbs. 3/3
 " 15 lbs. (max.) 3/6
 Greatest length, 3 feet 6 inches.
 Greatest length and girth combined, 6 feet.

REGISTERED PACKETS (PARCELS INCLUDED)

A fee of 1/- insures to the amount of £10; £20 1/1; £40 1/2; £60 1/3; £80 1/4; £400 2/8.

REGISTERED NEWS. RATE

Not exceeding 6 oz. (per copy) .. 2d.
 Every additional 6 oz. (per copy) 1d.
 Maximum Weight 2 lbs.

PRINTED PAPER RATE

Not exceeding 2 oz. 2d.
 " " 4 oz. 4d.
 Each additional 2 oz. 1d.
 Sizes same as for letter postage.

BLIND LITERATURE RATE

Not exceeding 2 lbs. 1d.
 " 5 " 1d.
 " 8 " 1d.
 " 11 " 2d.
 " 15 " (max.) 2d.
 Sizes same as for letter postage.

MONEY ORDERS

INLAND—Sums not exceeding
 up to | £20, 1/2 | £40, 1/6
 £10, 1/- | £30, 1/4 | £50, 1/8
 No single order can be issued for a sum exceeding £50.
 No order may contain a fraction or part of a penny.

POSTAL ORDERS

s. d.	Chge.	s. d.	Chge.
For 0 6	.. 2d.	For 11 0	.. 3d.
" 1 0	.. 2d.	" 12 0	.. 3d.
" 1 6	.. 3d.	" 13 0	.. 3d.
" 2 0	.. 3d.	" 14 0	.. 3d.
" 2 6	.. 3d.	" 15 0	.. 3d.
" 3 0	.. 3d.	" 16 0	.. 3d.
" 3 6	.. 3d.	" 17 0	.. 3d.
" 4 0	.. 3d.	" 18 0	.. 3d.
" 4 6	.. 3d.	" 19 0	.. 3d.
" 5 0	.. 3d.	" 20 0	.. 3d.
" 6 0	.. 3d.	" 21 0	.. 3d.
" 7 0	.. 3d.	" 40 0	.. 6d.
" 8 0	.. 3d.	" 60 0	.. 6d.
" 9 0	.. 3d.	" 80 0	.. 6d.
" 10 0	.. 3d.	" 100 0	.. 6d.

Orders must be cashed within six months of last day of month in which issued. Sender must fill in name of person to whom Order is sent, and he can also fill in the name of any particular Post Office and Order will be cashed at that Office only.

INLAND TELEGRAMS

12 words 3/-; and every additional word, 3d. Eire, 12 words for 3/6.

BILLS AND PROMISSORY NOTES

BILLS OF EXCHANGE payable on demand or at sight, or on presentation 2d.

BILL OF EXCHANGE of any other kind whatsoever (except a bank note) and PROMISSORY NOTE of any kind whatsoever (except a bank note) — drawn, or expressed to be payable, or actually paid, or endorsed, or in any way negotiated in the United Kingdom, where the amount or value of the money for which the bill or note is drawn or made.

	s. d.
Does not exceed	£10 0 2
Exceeds £10 and does not exceed 25	25 0 3
" 25	50 0 6
" 50	75 0 9
" 75	100 1 0

And 1s. for every additional £100 or fractional part of £100.

QUARTERLY TERMS

IN SCOTLAND		IN ENGLAND	
Candlemas	Feby. 2	Lady Day	Mar. 25
Whitsunday	May 15	Midsummer	June 24
Lammas	Aug. 1	Michaelmas	Sept. 29
Martinmas	Nov. 11	Christmas	Dec. 25

BANK HOLIDAYS

New Year's Day, Good Friday, First Monday in May, First Monday in August, and Christmas.

This Calendar is specially compiled and produced by Stevensons' Dairy Farms. Copyright of all pictures reserved.