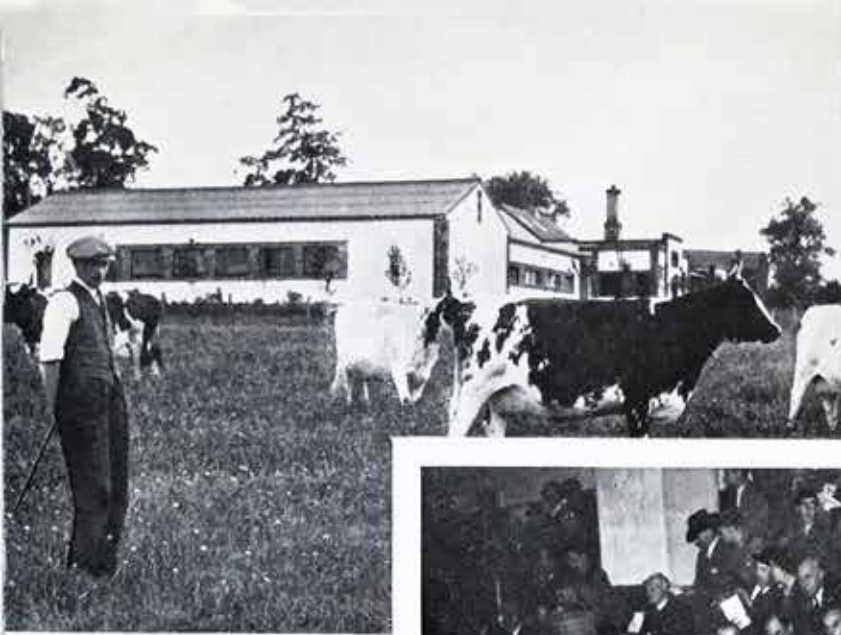


CALENDAR 1957
21st Anniversary Number



*Her Majesty The Queen in Cumnock
Tuesday, 3rd July, 1956*

STEVENSONS' DAIRY FARMS
With the Compliments of the Season



Above:
MR. WILLIAM STEVENSON
on a round of the stock at Changue.

Right:
MR. JAMES STEVENSON
Judging the Ayrshire classes at
the London Dairy Show, 1956.



PARTNERS..

The business trades as a partnership, with personal supervision throughout. Mr. John Stevenson is mainly concerned with the administrative and sales side, while Mr. James and Mr. William are responsible for management of the farms and the Pedigree Herds.

Below:
MR. JOHN STEVENSON
with a party of F.A.O.
delegates on a tour of the
premises at Changue (left
to right) — Messrs. W.
Barton (Scottish Milk Mar-
keting Board), A. A. Munoz
(Costa-Rica), I. E. Degen
(Chile), and L. Rukavina
(Yugoslavia).

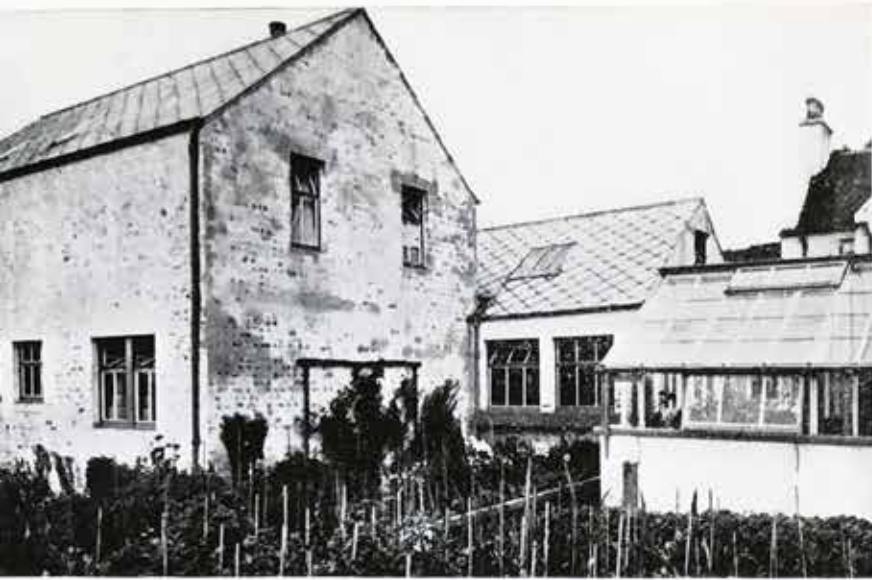


.. and STAFF

The nature of the business is such that it is difficult to get all members of the various Staffs together in one place at the same time. Our photograph includes the majority of those on the Dairy, Bakery, Restaurant, Shop, Office and Hotel Staffs—unfortunately the Farms are not represented. The entire organisation provides regular employment for a staff of 85.



GROWING UP

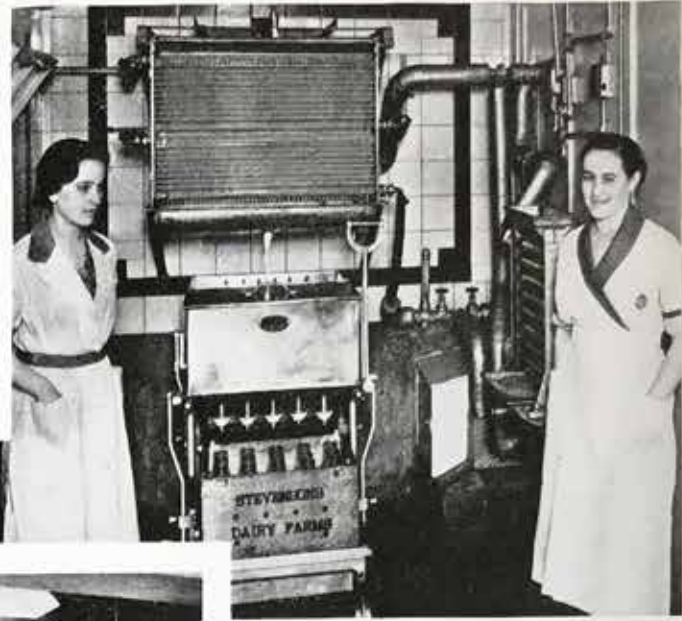


1938—The First Extension

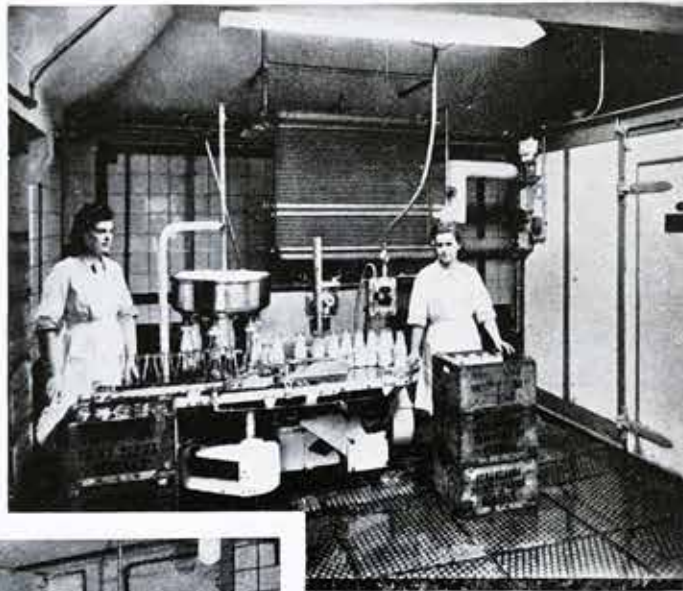
THE PREMISES

The growth of the business was most marked during the first fifteen years and to cope with this we did not hesitate to alter and improve as and when necessary.

The farm dairy was sufficient for our requirements until 1938 when the first extension, illustrated above, was built. There were further additions in 1942 and 1946 but the latest and most extensive were in 1952 when the existing dairy (bottom right) was completed.



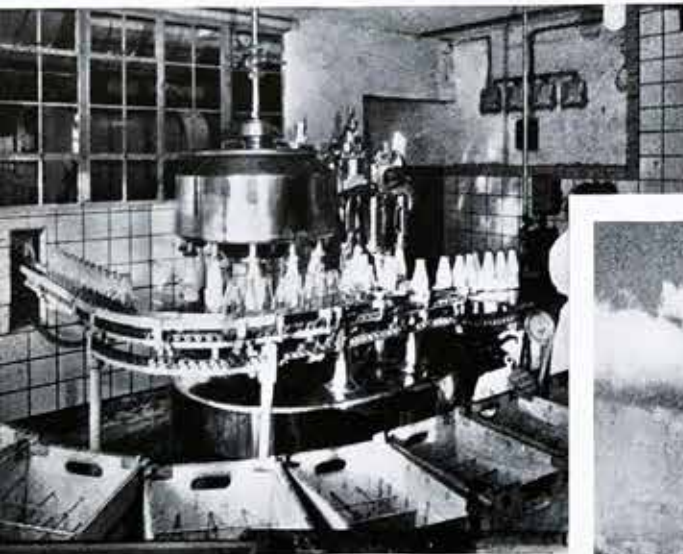
1938—Scotia Hand Filler



1942—Udec Gravity Filler

OPEN INVITATION

Customers and others interested are at liberty to inspect our plant and premises at any time, and each year many avail themselves of this invitation. We have entertained many distinguished visitors both from home and abroad and on two occasions, in 1939 and 1953, we arranged special "At-Home" days which were extremely well supported by customers. It is our intention to repeat this popular event in the Autumn.



1952—Gem Cemac Vacuum Filler

THE PLANT

We use filling and capping machines to illustrate the growth of the business in terms of plant. Equally interesting are the advances in bottle washing and sterilizing technique and the changes in refrigeration and storage methods.

TRANSPORT

There are now 16 vehicles engaged on distribution and all repairs and maintenance for these and the dairy plant is carried out in our own workshop.

1952—After Re-construction





THRESHING AT BANKEND

MECHANISATION ON THE FARM

Perhaps the most significant advance in recent years was the introduction of the Combine Harvester but it is not, as yet, a practical proposition on the average dairy holding in the West of Scotland which must continue to harvest in the usual way and employ what might be termed the "old fashioned" threshing mill.

There are, however, other forms of mechanisation which are a benefit to the dairy farmer, for example, the pick-up baler. We use it to bale the haycrop out of the rick and, as seen in our picture, in conjunction with the mill, to bale straw. This eases the problems of transport and storage and facilitates the handling of these bulky crops in the byre.

Stevenson's Dairy Farms
Cumnock.

Telephone : 3255-6

JANUARY, 1957

New 1st & 30th
Full Moon 16th

Sunday	- .	6	13	20	27
Monday	- .	7	14	21	28
Tuesday	- 1	8	15	22	29
Wednesday	2	9	16	23	30
Thursday	- 3	10	17	24	31
Friday	- 4	11	18	25	.
Saturday	- 5	12	19	26	.



GREENMILL SCHOOL, CUMNOCK

PRIMARY 1A—MISS RAE

MILK-IN-SCHOOLS

The design and layout of this modern school, and the facilities which it provides, place it in the fore-front of new schools in the West of Scotland.

The health of the child is now recognised as being of major importance in our educational system and in this milk plays no small part.

We have been entrusted with the supply of milk to schools in this area for almost twenty years now and at present we cater for 9,000 children. This important work, for which we are specially equipped, receives our most careful attention.

Stevenson's Dairy Farms
Cumnock.

Telephone : 3255-6

FEBRUARY, 1957 Full Moon 14th

Sunday	- .	3	10	17	24
Monday	- .	4	11	18	25
Tuesday	- .	5	12	19	26
Wednesday	. .	6	13	20	27
Thursday	- .	7	14	21	28
Friday	- 1	8	15	22	.
Saturday	- 2	9	16	23	.



NEWFIELD—TWIN LAMBS ON THE IN-BY FIELDS

THE SHEEP FARMS

Progress in farming is, of necessity, slow and this applies especially to sheep holdings. Consequently, when results are achieved, it can be a most satisfying experience.

The progressive improvement of the farms of Muirdyke and Newfield is perhaps best expressed in terms of stock.

When these marginal farms were acquired in 1922 they carried fewer than nine score of Black Face ewes, producing B.F. lambs which were sold in the store market.

There are now fully fourteen score B.F. ewes, producing Greyface lambs. The lamb crop has more than doubled and last year 60% were graded off the hill.

Stevenson's Dairy Farms
Cumnock.

Telephone : 3255-6

MARCH, 1957

*New 1st & 31st
Full Moon 16th*

<i>Sunday</i>	-	3	10	17	24	31
<i>Monday</i>	-	4	11	18	25	.
<i>Tuesday</i>	-	5	12	19	26	.
<i>Wednesday</i>		6	13	20	27	.
<i>Thursday</i>	-	7	14	21	28	.
<i>Friday</i>		1	8	15	22	29
<i>Saturday</i>		2	9	16	23	30



"I am not amused."

IRENE PATERSON, MAUCLINE

... Who can tell what a baby thinks?
Who can follow the gossamer links ...

J. G. HOLLAND.

APRIL, 1957

Full Moon 14th
New Moon 29th

<i>Sunday</i>	- .	7	14	21	28
<i>Monday</i>	- 1	8	15	22	29
<i>Tuesday</i>	- 2	9	16	23	30
<i>Wednesday</i>	3	10	17	24	.
<i>Thursday</i>	- 4	11	18	25	.
<i>Friday</i>	- 5	12	19	26	.
<i>Saturday</i>	- 6	13	20	27	.

Stevenson's Dairy Farms
Cumnock.

Telephone : 3255-6



THE DAILY ROUND—COYLTON

THE ROUNDS STAFF

It seems to us appropriate in this Anniversary Year to place on record our appreciation of the work of the Staff.

There is much more to a Roundsman's job than appears on the surface and it takes several years of experience to acquire the special qualities which enable him to give efficient service. The majority of our Roundsmen have been with us for 10 years and there are a few with 15 years service. Some of those men started as delivery boys on leaving school.

We are sure customers would wish to join us in paying tribute to them for the unfailing service which we and they have received.

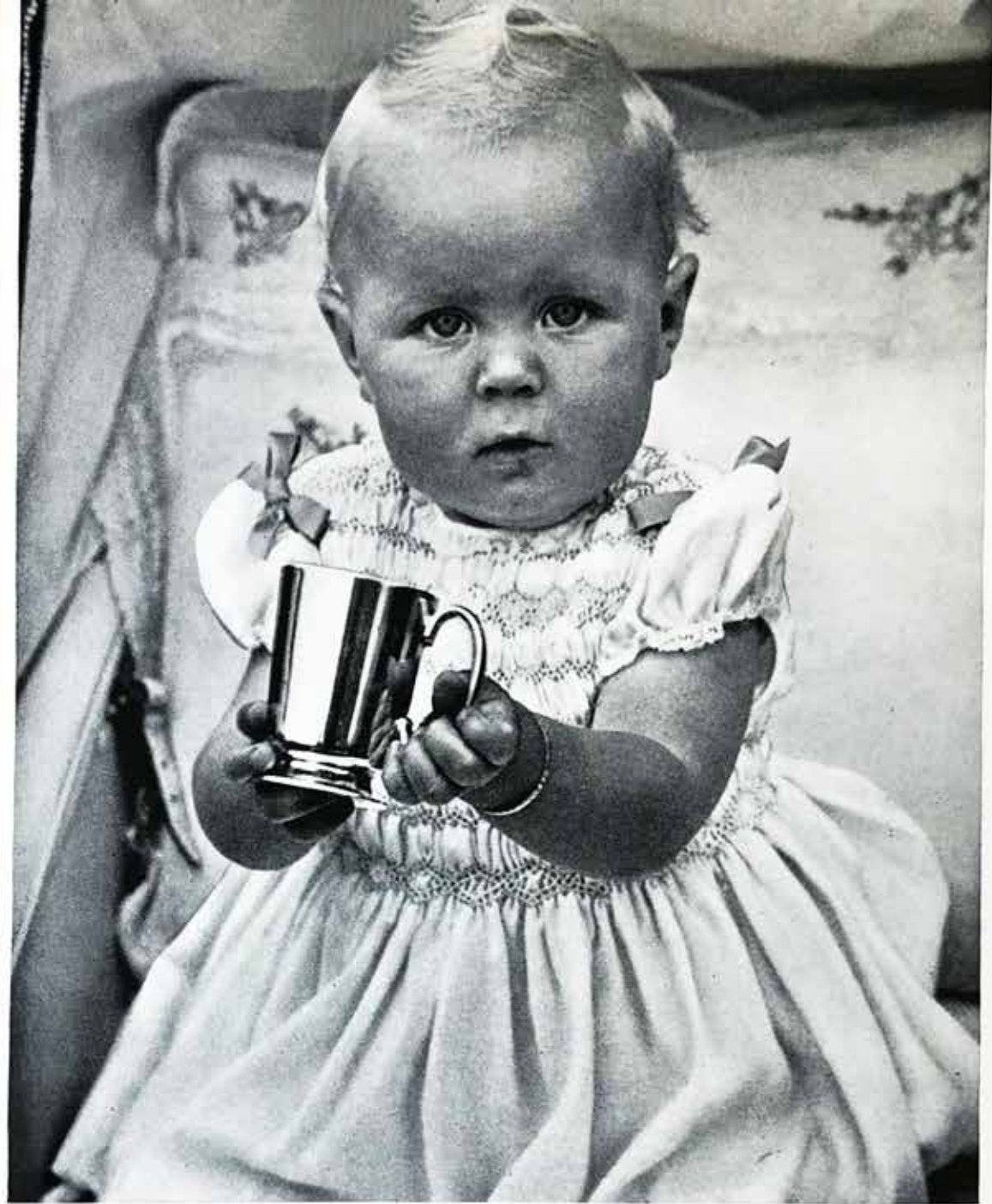
Stevenson's
Dairy Farms
Cumnock.

Telephone : 3255-6

MAY, 1957

Full Moon 13th
New Moon 29th

Sunday	- .	5	12	19	26
Monday	- .	6	13	20	27
Tuesday	- .	7	14	21	28
Wednesday	1	8	15	22	29
Thursday	- 2	9	16	23	30
Friday	- 3	10	17	24	31
Saturday	- 4	11	18	25	.



SEE WHAT I'VE WON!

CUMNOCK CARNIVAL 1956

The Baby Show is now an established feature of the Carnival Programme, attracting, every year, a very large entry.

The Competition was introduced by us in 1948 and it has been our pleasure to sponsor it every year since then, providing the principal prizes and the Trophy for the Best Baby in the Show.

Baby McMurdo, the worthy winner in 1956, is the daughter of Mr. and Mrs. Thomas McMurdo, 36 Skerrington Place, Cumnock, both of whom are, by co-incidence, former members of our Staff.

Stevenson's
Dairy Farms
Cumnock.

Telephone : 3255-6

JUNE, 1957

Full Moon 12th
New Moon 27th

<i>Sunday</i>	-	2	9	16	23	30
<i>Monday</i>	-	3	10	17	24	.
<i>Tuesday</i>	-	4	11	18	25	.
<i>Wednesday</i>		5	12	19	26	.
<i>Thursday</i>	-	6	13	20	27	.
<i>Friday</i>	-	7	14	21	28	.
<i>Saturday</i>		1	8	15	22	29

CHANGUE AND BANKEND

PEDIGREE AYRSHIRE HERDS

(Established at
Change 1867)

One of the Oldest "Ayrshire" Stocks



**YOUNG BULLS and HEIFERS
exported to NEW ZEALAND
and SOUTHERN RHODESIA**

BANKEND 'UNION'

(130390)

(born—15/2/55)

Dam—Bankend 'Whim' (58866)
by Smithston 'Indomitable' (56968) App.

Sire —Bankend 'Rebate' (113683)
by Barwehys 'Bulletin' (101876)

FIRST PRIZE FEBRUARY BULL at AYR SHOW
and SALE, March, 1956; purchased by Mr. J. G. Donald,
Featherstone, New Zealand

CHANGUE 'UNCHALLENGED'

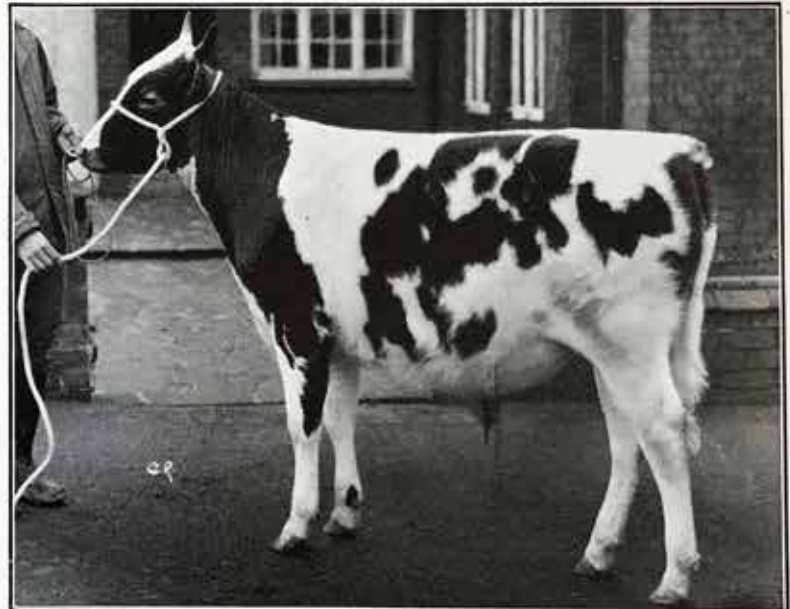
(131167)

(born—17/4/55)

Dam—Change 'Mint 5th' (36367)
by Lessnessock 'Needle' (39031)

Sire —Bankend 'Masterstroke' (86407)
by Bankend 'Kitchener' (69145) App.

Consigned with six heifers from the herds, to Mr. J. MacIntyre,
Shamva, Southern Rhodesia



BANKEND 'PEARL'

(403912)

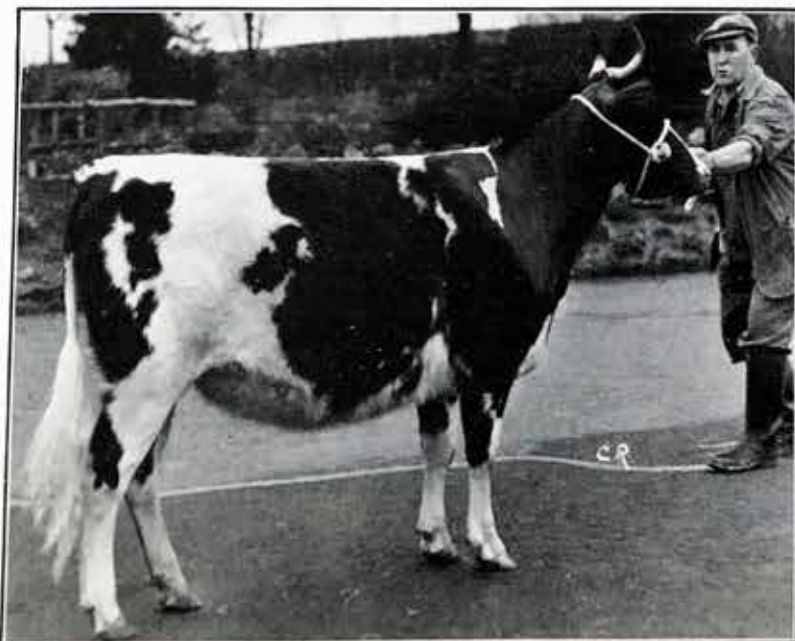
(born 11/2/54)

Dam—Bankend 'Peach 2nd' (262276)
by Change 'Liberator' (74531) App.

Sire —Lessnessock 'Wonder Cop' (109875)
by Lessnessock 'Inkspot' (99390)

One of the six heifers consigned to Southern Rhodesia

**BRED for CONFORMATION
and PERFORMANCE**



CHANGUE AND BANKEND

PEDIGREE AYRSHIRE HERDS

(Established at
Changue 1867)

One of the Oldest "Ayrshire" Stocks

TYPICAL STOCK COWS

BANKEND 'WHIM' (58866)

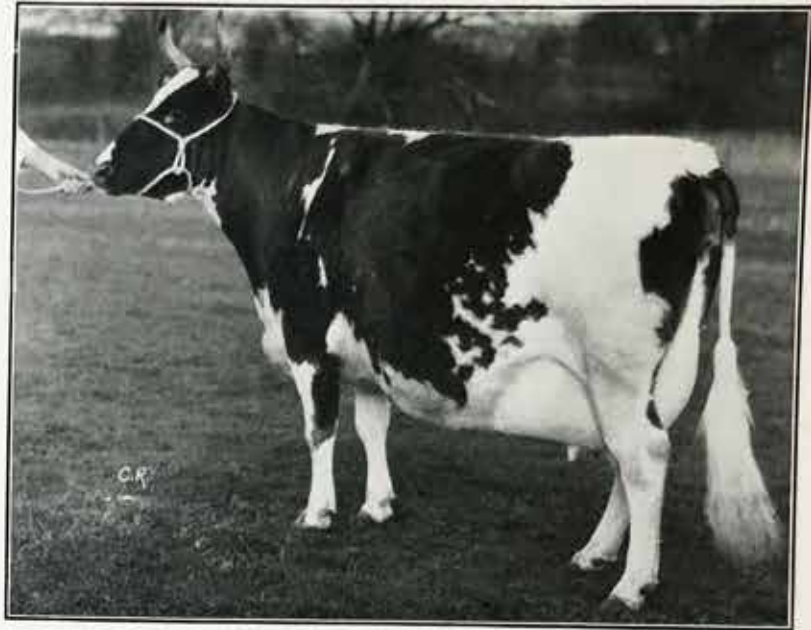
(born—10/6/46)

Dam—Low Milton 'Whim' (69436)
by Harleyholm 'Signet' (40717)

Sire — Smithston 'Indomitable' (56968) App.
by Netherton 'Noble Art' (36374) App.

MILK RECORD AVERAGE FOR EIGHT LACTATIONS
9394 lbs. at 4.18% b.f. in 244 days

Bankend 'Whim' is the dam of Bankend 'Union' which was
exported to New Zealand. (See overleaf)



BANKEND 'PATSY 2nd' (368257)

(born—5/7/53)

Dam—Bankend 'Patsy' (78232)
by Bankend 'Kitchener' (69145) App.

Sire — Bankend 'Parade' (100892)
by Lessnessock 'Pendragon' (92322)

MILK RECORD AS A HEIFER

Calved, 13/4/56—8232 lbs. at 4.44% b.f. in 245 days
(still milking 24½ lbs. at 4.1%)

THE FARMS

CHANGUE : BANKEND : CROFTHED : MUIRDYKE : NEWFIELD

The farming interests of the business at present extend to almost 1,000 acres, of which 642 are arable. The economy of the farms is based on the pedigree Ayrshire herds, with sheep as a subsidiary enterprise.

The Ayrshire herd, now 340 strong, was established at Changue 90 years ago and is one of the oldest stocks in the Country.

Over the years the herds have earned a reputation for high yields, good butter-fat and long life—the annual lactation average for upwards of 115 cows and heifers is consistently in excess of 1,000 gallons at over 4% butterfat.

Animals from the herds have figured in prize lists at local and national shows and young bulls consigned to Ayr and Lanark have frequently won leading honours. Details and photographs are a feature of our calendar each year.

Bred for Conformation and Performance

A Proud Day for Cumnock



Provost John Edgar welcoming the Royal Couple



The Queen signing the Visitors' Book with the Provost and Mr. R. D. Hunter, Town Clerk, in attendance.

Pictures on this page and the Front Cover are re-produced by courtesy of "The Cumnock Chronicle."

THE QUEEN AND THE DUKE OF EDINBURGH received a tremendous welcome when they arrived in Cumnock on the afternoon of Tuesday, 3rd July, 1956. Woodroad Park provided a beautiful setting for the Royal occasion and the great day will be remembered by many, perhaps most of all by the thousands of school children who thronged the Park and cheered again and again.

The Queen's Private Secretary described the setting as "magnificent" and the welcome as "wonderful."

Stevenson's Dairy Farms
Cumnock.

Telephone : 3255-6

JULY, 1957

Full Moon 11th
New Moon 27th

Sunday	-	.	7	14	21	28
Monday	-	1	8	15	22	29
Tuesday	-	2	9	16	23	30
Wednesday	3	10	17	24	31	
Thursday	-	4	11	18	25	.
Friday	-	5	12	19	26	.
Saturday	-	6	13	20	27	.



AYRSHIRE LANDSCAPE

WEST PARK, near JOPPA, COYLTON

*What is life if, full of care,
 We have no time to stand and stare?
 No time to stand beneath the boughs
 And stare as long as sheep or cows.*

W. H. DAVIES.

Stevenson's
Dairy Farms
 Cumnock.

Telephone : 3255-6

AUGUST, 1957

Full Moon 10th
 New Moon 25th

<i>Sunday</i>	- .	4	11	18	25
<i>Monday</i>	- .	5	12	19	26
<i>Tuesday</i>	- .	6	13	20	27
<i>Wednesday</i>	. .	7	14	21	28
<i>Thursday</i>	- 1	8	15	22	29
<i>Friday</i>	- 2	9	16	23	30
<i>Saturday</i>	- 3	10	17	24	31



"That's me caught a fish!"

ALLAN AND MURRAY

Ah! happy years! once more who would not be a boy?

BYRON.

SEPTEMBER, 1957 Full Moon 9th
New Moon 23rd

<i>Sunday</i>	-	1	8	15	22	29
<i>Monday</i>	-	2	9	16	23	30
<i>Tuesday</i>	-	3	10	17	24	.
<i>Wednesday</i>	-	4	11	18	25	.
<i>Thursday</i>	-	5	12	19	26	.
<i>Friday</i>	-	6	13	20	27	.
<i>Saturday</i>	-	7	14	21	28	.

Stevenson's
Dairy Farms
Cumnock.

Telephone: 3255-6



BARONY POWER STATION, AUCHINLECK

NEW HORIZONS

Progress in Agriculture can be real and significant but never spectacular. Not so with Industry, which seems to proclaim each development in terms of tall chimneys and massive concrete structures.

This power station, first of its kind in Britain, and the new shaft at Barony Pit, tapping fresh seams of coal, are indications that the people of this district can look to the future with confidence.

Stevenson's Dairy Farms
Cumnock.

Telephone : 3255-6

OCTOBER, 1957

Full Moon 8th
New Moon 23rd

<i>Sunday</i>	- .	6	13	20	27
<i>Monday</i>	- .	7	14	21	28
<i>Tuesday</i>	- 1	8	15	22	29
<i>Wednesday</i>	2	9	16	23	30
<i>Thursday</i>	- 3	10	17	24	31
<i>Friday</i>	- 4	11	18	25	.
<i>Saturday</i>	- 5	12	19	26	.



THE DAIRY BUILDINGS AT CHANGUE

TWENTY-ONE TODAY

5th NOVEMBER, 1957

Looking back it is difficult to say what prompted us to enter the retail trade—the idea probably sprang from our father's expressed wish to have a dairy shop in town.

In any case, when our little venture was launched in November, 1936, it certainly never occurred to us, working away in the confined space of the farm dairy, that one day alongside the steading would stand an up-to-date Creamery, embodying all that is best in modern dairy technology.

But success cannot be measured in terms of stone and stainless steel alone and we acknowledge the help of an efficient and loyal staff in all that has been achieved.

Stevensons' Farms
Dairy Farms
Cumnock.

Telephone : 3255-6

NOVEMBER, 1957 Full Moon 7th
New Moon 21st

<i>Sunday</i>	- .	3	10	17	24
<i>Monday</i>	- .	4	11	18	25
<i>Tuesday</i>	- .	5	12	19	26
<i>Wednesday</i>	. .	6	13	20	27
<i>Thursday</i>	- .	7	14	21	28
<i>Friday</i>	- 1	8	15	22	29
<i>Saturday</i>	- 2	9	16	23	30



WOODROAD PARK, CUMNOCK

*By sports like these are all their cares beguiled;
The sports of children satisfy the child.*
GOLDSMITH.

Stevenson's Dairy Farms
Cumnock.

Telephone : 3255-6

DECEMBER, 1957 *Full Moon 7th
New Moon 21st*

<i>Sunday</i>	-	1	8	15	22	29
<i>Monday</i>	-	2	9	16	23	30
<i>Tuesday</i>	-	3	10	17	24	31
<i>Wednesday</i>		4	11	18	25	.
<i>Thursday</i>	-	5	12	19	26	.
<i>Friday</i>	-	6	13	20	27	.
<i>Saturday</i>	-	7	14	21	28	.

HOTEL ROYAL

—A New Venture

For some years now the need to extend our Cumnock premises has been a major problem and when the Hotel Royal was offered for sale we felt it provided a solution to some of our difficulties. The Hotel occupies the two upper floors of the block of buildings in which our existing premises are situated.

Since we took over in May, 1956 certain alterations have been completed. Our first objective was to modernise the Hotel, providing facilities for functions of all kinds and improving the bedroom accommodation. Later, it will be possible to enlarge the Shop and the Restaurant.

Below: The Hotel.



Below:

Mrs. Alexander receiving gifts from the Firm and the Staff on her retirement after 24 years service with the Stevenson family. The Staff presentation was made by Miss Mary McCrindle who has, herself, given over 20 years service. The Secretary of the Social Club, Mr. R. F. Faulds, is on the left.



Above: The Hotel Dining Room.

The Staff Social Club

For the past 14 years the staffs in the various sections of the business have been meeting regularly under the auspices of the Social Club, conducted and financed by members themselves. We are, of course, delighted to co-operate in every way, believing that opportunities for relaxation and fellowship promote that team spirit which is so essential in business.

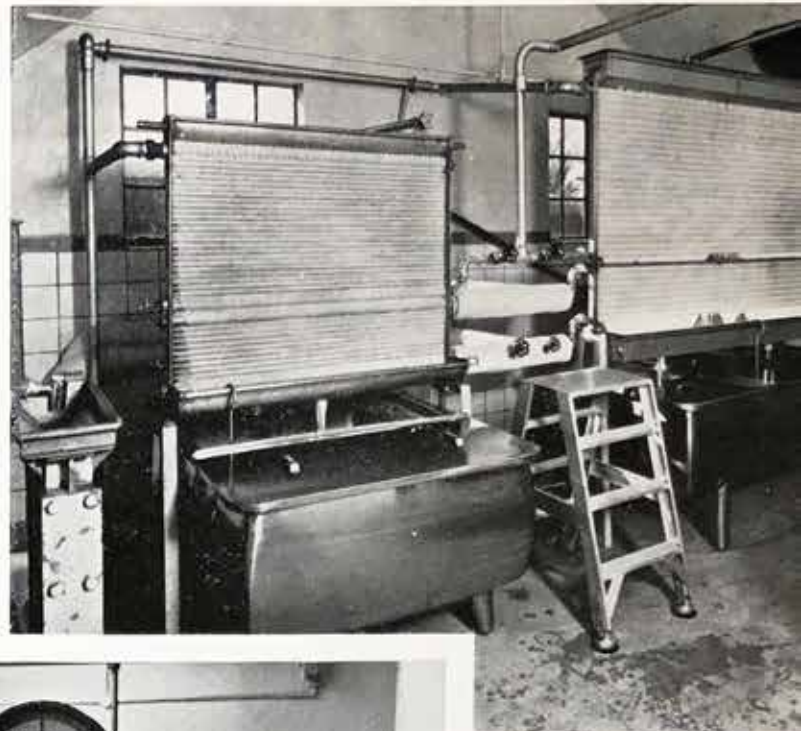
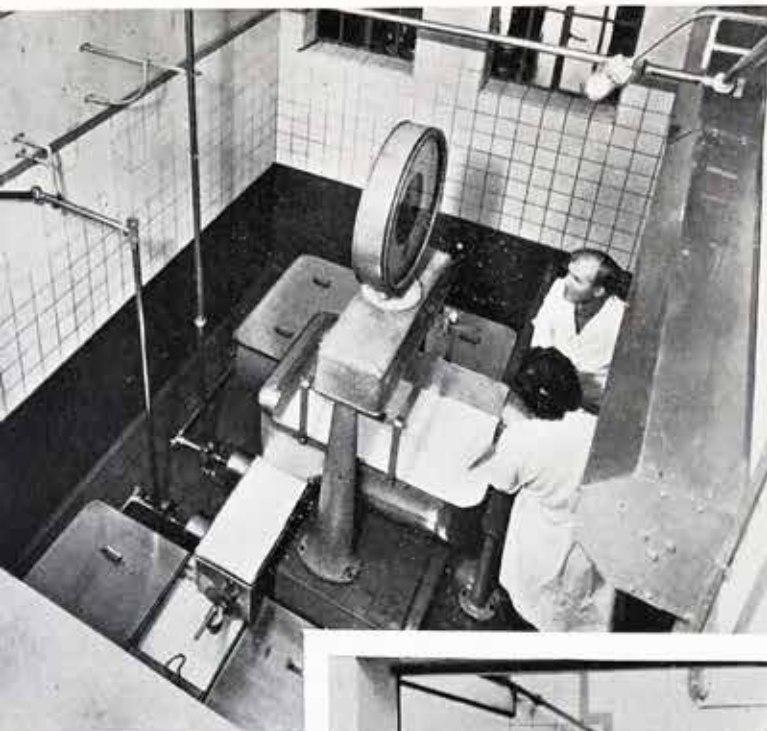
Membership is open to wives and families and the monthly outing, the main feature of the Club's syllabus, is arranged to suit the varied interests of young and old alike.

Special occasions, such as marriage or retirement, are always suitably recognised.

Below: The Children's Christmas Party.



DAIRY PLANT and PERSONNEL



Above: Milk Reception.

Above: Cooling Plant.

THE DAIRY STAFF

An interesting feature of the business is the length of service of so many members of our Staff.

The combined service of the four senior girls in this photograph is 56 years: all nine have been with us since leaving school. (Contd. on right).

Below: Pasteurisers.



THE DAIRY STAFF (Contd.)

Mr. McCulloch, on the left, joined the Staff in 1940 and Mr. Marshall, right, in 1939—17 and 18 years of service respectively.

This is a record of which they and we are justly proud.

The Plant illustrated on this page was installed in 1951 and has been featured and described in earlier issues of our Calendar.

Below: Cold Store



Twenty-First Anniversary

5th NOVEMBER, 1957



Twenty-one years is not a long time in the life of a business, but these are the significant years during which foundations are laid and character formed. Thus, we may look on our twenty-first birthday as little more than the end of the beginning.

We have had our problems, of course, and there have been many changes to make (growing up is an interesting experience) but throughout the years, one thing has remained constant—our desire to provide a first class article and in every way to merit the confidence and goodwill of our customers. We look forward to serving you for many years to come.

HISTORICAL NOTE

From "The Daily Mail" of 4th November, 1936

BROTHERS' MILK BAR

Old Cumnock, which has already earned a certain degree of fame for enterprise in providing a Bathing Pool, will witness tomorrow the opening of the first Milk Bar of modern equipment run by dairy farmers in Scotland.

It is a notable example of private enterprise on lines encouraged by the Scottish Milk Marketing Board.

The promoters are three brothers: Messrs. J., J. & W. Stevenson, who conduct four farms in the district. The Bar will provide milk shakes of a wide range of flavours and will also offer patrons an old-fashioned "quencher" in the form of "sour-dook."

PUBLIC HOUSE SITE

Associated with the Bar are a Dairy and Restaurant, the whole being intended as a direct outlet for dairy produce from these farms.

Social reformers will see progress in the fact that the Milk Bar occupies central and prominent premises formerly run as a Public House.

Apart from the Milk Bar, this enterprise gives the town its first regular dairy shop. Hitherto all Cumnock milk supplies have been drawn from farmers' carts.

Scotland's Milk Marketing Board are giving the enterprise an inaugural blessing. The Manager, Mr. T. G. Henderson, will perform the opening ceremony. The Provost, Mrs. E. Hughes, who is a daughter of the Socialist pioneer, the late Mr. J. Keir Hardie, will preside.

Stevensons' Dairy Farms

Cumnock

CALENDAR 1957.

JANUARY.		FEBRUARY.		MARCH.		APRIL.		MAY.		JUNE.	
Su.	6 13 20 27	Su.	3 10 17 24	Su.	3 10 17 24 31	Su.	7 14 21 28	Su.	5 12 19 26	Su.	2 9 16 23 30
Mn.	7 14 21 28	Mn.	4 11 18 25	Mn.	4 11 18 25	Mn.	8 15 22 29	Mn.	6 13 20 27	Mn.	3 10 17 24
Tu.	1 8 15 22 29	Tu.	5 12 19 26	Tu.	5 12 19 26	Tu.	2 9 16 23 30	Tu.	7 14 21 28	Tu.	4 11 18 25
Wd.	2 9 16 23 30	Wd.	6 13 20 27	Wd.	6 13 20 27	Wd.	3 10 17 24	Wd.	1 8 15 22 29	Wd.	5 12 19 26
Th.	3 10 17 24 31	Th.	7 14 21 28	Th.	7 14 21 28	Th.	4 11 18 25	Th.	2 9 16 23 30	Th.	6 13 20 27
Fr.	4 11 18 25	Fr.	1 8 15 22	Fr.	1 8 15 22 29	Fr.	5 12 19 26	Fr.	3 10 17 24 31	Fr.	7 14 21 28
Sa.	5 12 19 26	Sa.	2 9 16 23	Sa.	2 9 16 23 30	Sa.	6 13 20 27	Sa.	4 11 18 25	Sa.	1 8 15 22 29

JULY.		AUGUST.		SEPTEMBER.		OCTOBER.		NOVEMBER.		DECEMBER.	
Su.	7 14 21 28	Su.	4 11 18 25	Su.	1 8 15 22 29	Su.	6 13 20 27	Su.	3 10 17 24	Su.	1 8 15 22 29
Mn.	1 8 15 22 29	Mn.	5 12 19 26	Mn.	2 9 16 23 30	Mn.	7 14 21 28	Mn.	4 11 18 25	Mn.	2 9 16 23 30
Tu.	2 9 16 23 30	Tu.	6 13 20 27	Tu.	3 10 17 24	Tu.	1 8 15 22 29	Tu.	5 12 19 26	Tu.	3 10 17 24 31
Wd.	3 10 17 24 31	Wd.	7 14 21 28	Wd.	4 11 18 25	Wd.	2 9 16 23 30	Wd.	6 13 20 27	Wd.	4 11 18 25
Th.	4 11 18 25	Th.	1 8 15 22 29	Th.	5 12 19 26	Th.	3 10 17 24 31	Th.	7 14 21 28	Th.	5 12 19 26
Fr.	5 12 19 26	Fr.	2 9 16 23 30	Fr.	6 13 20 27	Fr.	4 11 18 25	Fr.	1 8 15 22 29	Fr.	6 13 20 27
Sa.	6 13 20 27	Sa.	3 10 17 24 31	Sa.	7 14 21 28	Sa.	5 12 19 26	Sa.	2 9 16 23 30	Sa.	7 14 21 28

CALENDAR 1958.

JANUARY.		FEBRUARY.		MARCH.		APRIL.		MAY.		JUNE.	
Su.	5 12 19 26	Su.	2 9 16 23	Su.	2 9 16 23 30	Su.	6 13 20 27	Su.	4 11 18 25	Su.	1 8 15 22 29
Mn.	6 13 20 27	Mn.	3 10 17 24	Mn.	3 10 17 24 31	Mn.	7 14 21 28	Mn.	5 12 19 26	Mn.	2 9 16 23 30
Tu.	7 14 21 28	Tu.	4 11 18 25	Tu.	4 11 18 25	Tu.	1 8 15 22 29	Tu.	6 13 20 27	Tu.	3 10 17 24
Wd.	1 8 15 22 29	Wd.	5 12 19 26	Wd.	5 12 19 26	Wd.	2 9 16 23 30	Wd.	7 14 21 28	Wd.	4 11 18 25
Th.	2 9 16 23 30	Th.	6 13 20 27	Th.	6 13 20 27	Th.	3 10 17 24	Th.	1 8 15 22 29	Th.	5 12 19 26
Fr.	3 10 17 24 31	Fr.	7 14 21 28	Fr.	7 14 21 28	Fr.	4 11 18 25	Fr.	2 9 16 23 30	Fr.	6 13 20 27
Sa.	4 11 18 25	Sa.	1 8 15 22	Sa.	1 8 15 22 29	Sa.	5 12 19 26	Sa.	3 10 17 24 31	Sa.	7 14 21 28

LETTER POSTAGE.

Not exceeding 2 oz. 2½d.
 Each additional 2 oz. or part thereof 1½d.
 No letter to be above 2 feet in length or 18 ins. in width or depth.
 In form of roll 3 feet 3 inches for length and twice the diameter combined (2 feet 8 inches for the greatest dimension).

POST CARD RATE.

For every post card 2d.
 " reply post card 4d.

PARCEL POST.

Not exceeding 2 lbs. 1/4
 " 3 lbs. 1/6
 " 4 lbs. 1/9
 " 5 lbs. 2/-
 " 6 lbs. 2/3
 " 7 lbs. 2/6
 " 8 lbs. 2/9
 " 11 lbs. 3/-
 " 15 lbs. 3/6
 Greatest length, 3 feet 6 inches.
 Greatest length and girth combined, 6 feet.

REGISTERED PACKETS (PARCELS INCLUDED).

A fee of 1/- insures to the amount of £10; £20 1/1; £40 1/2; £60 1/3; £80 1/4; £400 2/8.

REGISTERED NEWS. RATE.

Not exceeding 6 oz. (per copy) 2d.
 For every additional 4 oz. (per copy) 1d.
 Maximum Weight 2 lbs.

PRINTED PAPER RATE.

Not exceeding 4 oz. 2d.
 For each additional 2 oz. or part thereof up to 2 lb. 1d.
 Sizes same as for letter postage.

BLIND LITERATURE RATE.

Not exceeding 2 lbs. ½d.
 " 5 " 1d.
 " 8 " 1½d.
 " 11 " 2d.
 " 15 " (Max.) 2½d.
 Sizes same as for letter postage.

MONEY ORDERS.

INLAND.—Sums not exceeding
 up to | £20, 1/2 | £40, 1/6
 £10, 1/- | £30, 1/4 | £50, 1/8
 No single order can be issued for a sum exceeding £50.
 No order may contain a fraction or part of a penny.

POSTAL ORDERS.

s. d. Charge	s. d. Charge
For 0 6.....1½d.	For 11 0.....3d.
" 1 0.....1½d.	" 12 0.....3d.
" 1 6.....2d.	" 13 0.....3d.
" 2 0.....2d.	" 14 0.....3d.
" 2 6.....2d.	" 15 0.....3d.
" 3 0.....2d.	" 16 0.....3d.
" 3 6.....2d.	" 17 0.....3d.
" 4 0.....2d.	" 18 0.....3d.
" 4 6.....2d.	" 19 0.....3d.
" 5 0.....2d.	" 20 0.....3d.
" 6 0.....3d.	" 21 0.....3d.
" 7 0.....3d.	" 40 0.....6d.
" 8 0.....3d.	" 60 0.....6d.
" 9 0.....3d.	" 80 0.....6d.
" 10 0.....3d.	" 100 0.....6d.

Orders must be cashed within six months of last day of month in which issued. Sender must fill in name of person to whom Order is sent, and he can also fill in the name of any particular Post Office and Order will be cashed at that Office only.

INLAND TELEGRAMS.

12 words 3/-; and every additional word, 3d. Eire, 12 words for 3/6.

BILLS AND PROMISSORY NOTES.

BILL OF EXCHANGE payable on demand, or at sight, or on presentation 2d
 BILL OF EXCHANGE of any other kind whatsoever (except a bank note) and PROMISSORY NOTE of any kind whatsoever (except a bank note)—drawn, or expressed to be payable, or actually paid, or endorsed, or in any way negotiated in the United Kingdom, where the amount or value of the money for which the bill or note is drawn or made
 Does not exceed..... £10..... 0 2
 Exceeds £10 and does not exceed 25..... 0 3
 " 25 " 50..... 0 6
 " 50 " 75..... 0 9
 " 75 " 100..... 1 0
 And 1s. for every additional £100 or fractional part of £100.

QUARTERLY TERMS.

IN SCOTLAND.		IN ENGLAND.	
Candlemas.....	Feb. 2	Lady Day.....	Mar. 25
Whitsunday.....	May 15	Midsummer.....	June 24
Lammas.....	Aug. 1	Michaelmas.....	Sept 29
Martinmas.....	Nov. 11	Christmas.....	Dec. 25

BANK HOLIDAYS.

New Year's Day, Good Friday, First Monday in May
 First Monday in August, and Christmas.

This Calendar is specially compiled and produced by Stevensons' Dairy Farms. Copyright of all pictures reserved.