

1956

Calendar

(Nineteenth Issue)

1956



JUST BORN

With the Compliments of—

**Stevenson's Dairy Farms,
Cumnock.**



TO ALL "OUR" BABIES—GOOD HEALTH AND HAPPINESS IN 1956.

*He is so little to be so large!
Why, a train of cars, or a whale-back barge
Couldn't carry the freight of the monstrous weight
Of all his qualities, good and great.*

E. V. COOKE.

Stevenson's Dairy Farms
Cumrook.

Telephone : 3255-6

JANUARY, 1956

New Moon 13th
Full Moon 27th

<i>Sunday</i>	-	1	8	15	22	29
<i>Monday</i>	-	2	9	16	23	30
<i>Tuesday</i>	-	3	10	17	24	31
<i>Wednesday</i>		4	11	18	25	.
<i>Thursday</i>	-	5	12	19	26	.
<i>Friday</i>	-	6	13	20	27	.
<i>Saturday</i>	-	7	14	21	28	.



Milk




Milk

A FAMILIAR FACE.

THE MILK GIRL

Miss Zoe Newton provides a common link between the two major industries in our district, Mining and Agriculture. During her visit to the 1955 Scottish Dairy Show, Miss Newton, formerly a Land Girl, took an active part in a display presented by the Young Farmers' Clubs. Later in the year, she was present at the introduction of the Milk in Mines Scheme at Manor Powis Colliery, Alloa, where she spent some time underground. Both at the Dairy Show and at the Colliery Miss Newton's pluck was greatly admired.

Stevenson's Dairy Farms
Cumnock.

Telephone : 3255-6

FEBRUARY, 1956 New Moon 11th
Full Moon 26th

Sunday	- .	5	12	19	26
Monday	- .	6	13	20	27
Tuesday	- .	7	14	21	28
Wednesday	1	8	15	22	29
Thursday	- 2	9	16	23	.
Friday	- 3	10	17	24	.
Saturday	- 4	11	18	25	.



HERALDING THE SPRING.

*Little Lamb, who made thee?
 Dost thou know who made thee?
 Gave thee life and bid thee feed,
 By the stream and o'er the mead;
 Gave thee clothing of delight,
 Softest clothing, woolly, bright;
 Gave thee such a tender voice,
 Making all the vales rejoice?
 Little Lamb, who made thee?
 Dost thou know who made thee?*

WILLIAM BLAKE.

Stevenson's Farms
 Dairy Farms
 Cumnock.

Telephone : 3255-6

MARCH, 1956

New Moon 12th
 Full Moon 26th

<i>Sunday</i>	- .	4	11	18	25
<i>Monday</i>	- .	5	12	19	26
<i>Tuesday</i>	- .	6	13	20	27
<i>Wednesday</i>	. .	7	14	21	28
<i>Thursday</i>	- 1	8	15	22	29
<i>Friday</i>	- 2	9	16	23	30
<i>Saturday</i>	- 3	10	17	24	31



THE SWIMMING LESSON.

*I do be thinking God must laugh
The time he makes a boy;
All element the creatures are,
And Devilment and joy.*

WINIFRED M. LETTS.

Stevensons' Dairy Farms
Cumnock.

Telephone : 3255-6

APRIL, 1956

New Moon 11th
Full Moon 25th

<i>Sunday</i>	-	1	8	15	22	29
<i>Monday</i>	-	2	9	16	23	30
<i>Tuesday</i>	-	3	10	17	24	.
<i>Wednesday</i>		4	11	18	25	.
<i>Thursday</i>	-	5	12	19	26	.
<i>Friday</i>	-	6	13	20	27	.
<i>Saturday</i>	-	7	14	21	28	.



"MUMMY, HERE'S THE MILKMAN."

Every Mother knows . . .

that the source of her family's milk supply is of vital importance. Our Customers enjoy the benefits of a modern and efficient service backed by a life-times' experience in the Dairy Trade.

On the Production side, the Changue and Bank-end Herds, founded over 80 years ago, maintain a leading position in the "Ayrshire" world and are noted for their high yields of Milk and Butter Fat.

On the Distribution side, in the course of 20 years, we have established at Changue a Working Dairy acknowledged by those in authority as one of the best of its kind in the Country.

At every stage we observe the strictest Standards of Hygiene and our supplies are regularly sampled and tested to ensure that the quality is maintained. Perhaps most important of all, there is Personal Supervision throughout the entire organisation.

Stevenson's Dairy Farms
Cumnock.

Telephone : 3255-6

MAY, 1956

*New Moon 10th
Full Moon 24th*

<i>Sunday</i>	-	6	13	20	27	
<i>Monday</i>	-	7	14	21	28	
<i>Tuesday</i>	-	1	8	15	22	29
<i>Wednesday</i>	-	2	9	16	23	30
<i>Thursday</i>	-	3	10	17	24	31
<i>Friday</i>	-	4	11	18	25	.
<i>Saturday</i>	-	5	12	19	26	.



CUMNOCK OLD CHURCH SUNDAY SCHOOL TRIP.

*He who gives a child a treat
Makes joy-bells ring in heaven's street.*

JOHN MASEFIELD.

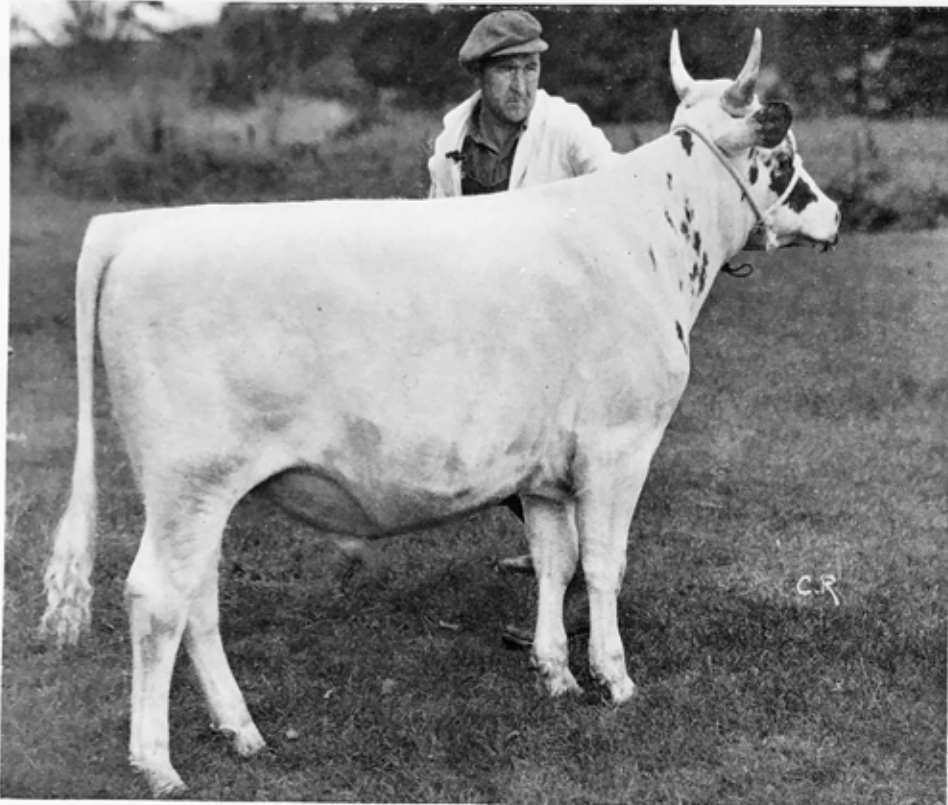
Stevenson's Dairy Farms
Cumnock.

Telephone : 3255-6

		JUNE, 1956				<i>New Moon 8th</i>	<i>Full Moon 23rd</i>
<i>Sunday</i>	- .	3	10	17	24		
<i>Monday</i>	- .	4	11	18	25		
<i>Tuesday</i>	- .	5	12	19	26		
<i>Wednesday</i>	. .	6	13	20	27		
<i>Thursday</i>	- .	7	14	21	28		
<i>Friday</i>	- 1	8	15	22	29		
<i>Saturday</i>	- 2	9	16	23	30		

Craig Championship Cup Won Outright by the Bankend Herd

AJR (NOV.) SHOW AND SALE 1955



BANKEND "TOP LINE" (127899)
(Born—7th September, 1954)

SIRE—Bankend "Masterstroke" (86407)
by Bankend "Kitchener" (69145) App.

DAM—Bankend "Queen of the May 3rd"
(158121)
by Willoxton "Loadstone" (73383)

MILK RECORD OF DAM—

Calved	lbs. Milk	% Fat	Days
29/6/51	12343	3.91	357
3/9/52	13440	4.04	319
18/9/53	12158	4.11	319
7/9/54	14665	4.07	326

Calved again 27/9/55. Calving Index, 388 days.

BANKEND "TOP LINE" was First Prize Senior Bull and Winner of the Craig Championship Cup. He was purchased by Mr. T. H. Cottam, Rottington Hall, Whitehaven, Cumberland.

"TOP LINE" was also FIRST PRIZE Ayrshire Bull and CHAMPION of the Young Stock Section at KILMARNOCK FOAL SHOW, 1955.

HONOURS LIST

The Change and Bankend Herds have won many leading honours at both Ayr and Lanark Sales during the past ten years.

- 1946—Lanark—First Prize Senior
Ayr —First Prize Junior
- 1947—Ayr —Reserve Champion
—Second Prize Junior
Lanark—First and Third Prize Junior
- 1948—Ayr —Champion
—First Prize Junior
Lanark—First Prize Junior
- 1949—Lanark—First Prize Senior
—Second Prize Junior
- 1950—Ayr —Reserve Champion
—First and Second Prize Senior
—Third Prize Junior
Lanark—Second Prize Junior
- 1951—Ayr —Second and Third Prize Junior
- 1952—Lanark—First Prize Group of Three
—Second Prize Junior
- 1953—Ayr —Champion
—Reserve Champion
—First Prize Junior
—First Prize Senior
- 1954—Ayr —First Prize Senior
Lanark—Second Prize Junior
- 1955—Ayr —Champion
—First Prize Senior
—Third Prize Junior



Mr. John Hughes, Herdsman at Bankend, being congratulated by Mrs. Hughes and members of the Farm Staff on bringing home the Trophy. Mr. James Stevenson is on the left of the picture.

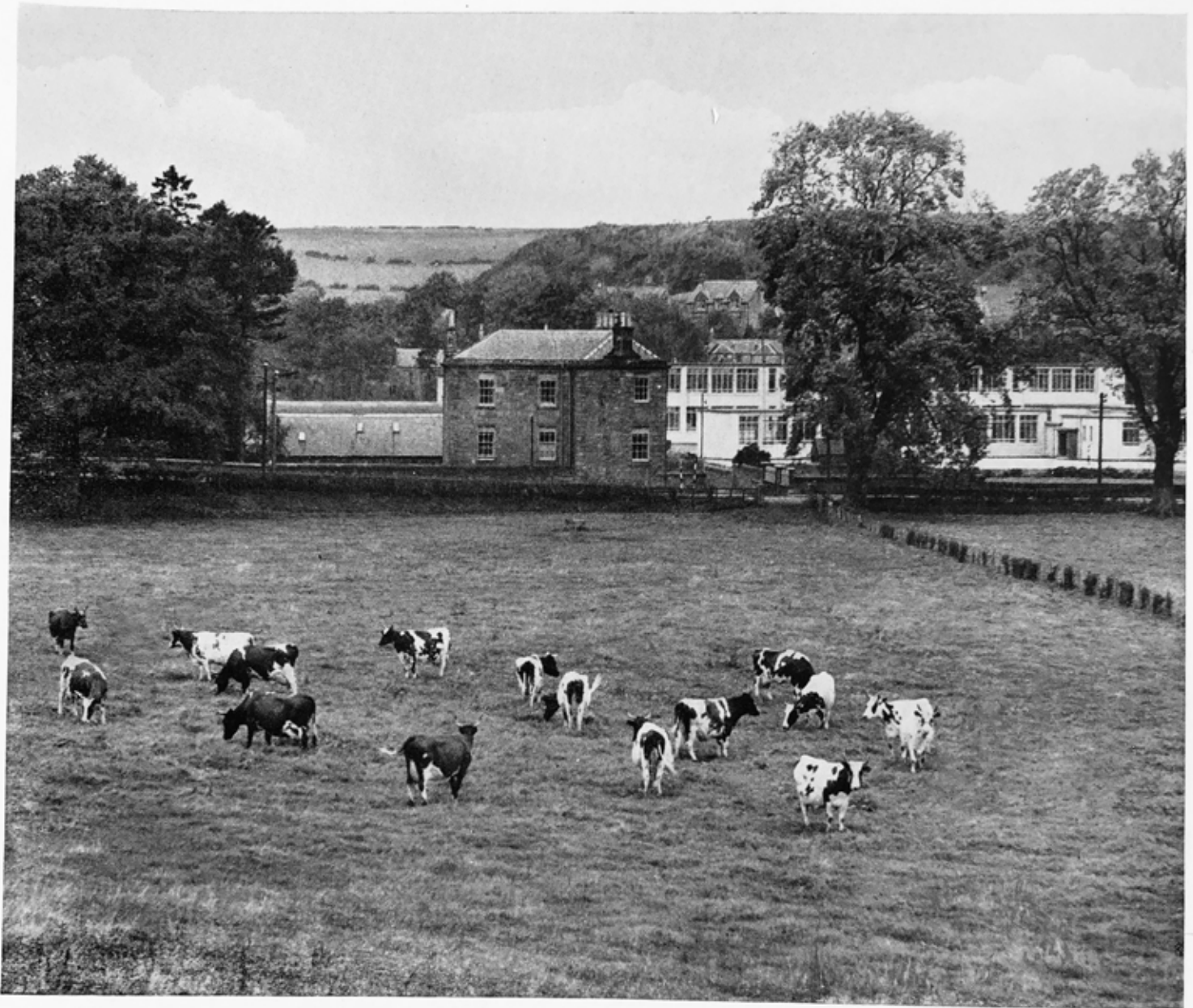
CHANGE AND BANKEND AYRSHIRES

are **Bred for Conformation and Performance**

High Yielding Cows

from

The Changue and Bankend Herds



PHOTOGRAPHED AT BANKEND, OCTOBER, 1955.

The following are some interesting facts concerning this group of sixteen outstanding Ayrshire cows, all of which are at present in the herds and giving milk from four quarters. Records are as at mid-November, with 10 Cows still milking.

TOTAL PRODUCTION—MILK—1,890,521, lbs. (844 tons)

—Butter fat—77,012 lbs. (34½ tons)

AVERAGE PRODUCTION—12,158 lbs. milk with 495.26 lbs. butter fat

—The butter fat average is 4.07% and the calving index, 413 days

Ages range from 12 to 18 and average 13¾ years. The combined age of the group is 221 years. Fourteen of the animals are members of the Ayrshire Cattle Herd Book Society's 100,000 lbs. Club. The remaining two will qualify early in January, 1956.

CHANGUE AND BANKEND AYRSHIRES

are Bred for Production and Longevity



NEAR SUNDRUM, COYLTON.

*The burning beams down from his face
 Sa fervently can beat,
 That man and beast now seeks a place
 To save them fra the heat.*

ALEXANDER HUME.

*Stevenson's Dairy Farms
 Cumnock.*

Telephone : 3255-6

JULY, 1956

*New Moon 8th
 Full Moon 22nd*

<i>Sunday</i>	-	1	8	15	22	29
<i>Monday</i>	-	2	9	16	23	30
<i>Tuesday</i>	-	3	10	17	24	31
<i>Wednesday</i>		4	11	18	25	.
<i>Thursday</i>	-	5	12	19	26	.
<i>Friday</i>		6	13	20	27	.
<i>Saturday</i>		7	14	21	28	.



HARVESTING AT CHANGUE.

*The summer days are come again;
Once more the glad earth yields
Her golden wealth of ripening grain,
And breath of clover fields.*

SAMUEL LONGFELLOW.

Stevenson's Dairy Farms
Cumnock.

Telephone : 3255-6

AUGUST, 1956

New Moon 6th
Full Moon 21st

<i>Sunday</i>	-	5	12	19	26
<i>Monday</i>	-	6	13	20	27
<i>Tuesday</i>	-	7	14	21	28
<i>Wednesday</i>	1	8	15	22	29
<i>Thursday</i>	- 2	9	16	23	30
<i>Friday</i>	- 3	10	17	24	31
<i>Saturday</i>	- 4	11	18	25	.



ISLA AND ERNEST.

... in life the firmest friend,
The first to welcome, foremost to defend.

BYRON.

Stevenson's Dairy Farms
CUMNOCK.

Telephone : 3255-6

SEPTEMBER, 1956 New Moon 4th
Full Moon 20th

<i>Sunday</i>	-	2	9	16	23	30
<i>Monday</i>	-	3	10	17	24	.
<i>Tuesday</i>	-	4	11	18	25	.
<i>Wednesday</i>		5	12	19	26	.
<i>Thursday</i>	-	6	13	20	27	.
<i>Friday</i>	-	7	14	21	28	.
<i>Saturday</i>	1	8	15	22	29	.



WEST GATES, DUMFRIES HOUSE.

*Shadows are in reality, when the sun is shining,
the most conspicuous thing in a landscape.*

RUSKIN.

*Stevenson's Dairy Farms
Cumnock.*

Telephone : 3255-6

OCTOBER, 1956

New Moon 4th
Full Moon 19th

<i>Sunday</i>	-	7	14	21	28	
<i>Monday</i>	-	1	8	15	22	29
<i>Tuesday</i>	-	2	9	16	23	30
<i>Wednesday</i>	-	3	10	17	24	31
<i>Thursday</i>	-	4	11	18	25	.
<i>Friday</i>	-	5	12	19	26	.
<i>Saturday</i>	-	6	13	20	27	.



COUNTRY FOLK.

*They love their land, because it is their own,
And scorn to give aught other reason why;
Would shake hands with a king upon his throne,
And think it a kindness to his majesty.*

F. G. HALLOCK.

*Stevenson's Dairy Farms
Cumnock.*

Telephone : 3255-6

NOVEMBER, 1956 *New Moon 2nd
Full Moon 18th*

<i>Sunday</i>	- .	4	11	18	25
<i>Monday</i>	- .	5	12	19	26
<i>Tuesday</i>	- .	6	13	20	27
<i>Wednesday</i>	. .	7	14	21	28
<i>Thursday</i>	- 1	8	15	22	29
<i>Friday</i>	- 2	9	16	23	30
<i>Saturday</i>	- 3	10	17	24	.



'THE FROLIC ARCHITECTURE OF THE SNOW'

AUCHINLECK ROAD, CUMNOCK.

*And though abroad the sharp winds blow
And skies are chill and frosts are keen,
Home closer draws her circle now
And warmer glows her light within.*

SAMUEL LONGFELLOW.

*Stevenson's Dairy Farms
Cumnock.*

Telephone : 3255-6

DECEMBER, 1956

New Moon 2nd
Full Moon 17th

<i>Sunday</i>	-	2	9	16	23	30
<i>Monday</i>	-	3	10	17	24	31
<i>Tuesday</i>	-	4	11	18	25	.
<i>Wednesday</i>		5	12	19	26	.
<i>Thursday</i>	-	6	13	20	27	.
<i>Friday</i>	-	7	14	21	28	.
<i>Saturday</i>	1	8	15	22	29	.

Stevensons' Dairy Farms

Cumnock

CALENDAR 1956.

JANUARY.		FEBRUARY.		MARCH.		APRIL.		MAY.		JUNE.	
Su.	- 1 8 15 22 29	Su.	- - 5 12 19 26	Su.	- - 4 11 18 25	Su.	- 1 8 15 22 29	Su.	- - 6 13 20 27	Su.	- - 3 10 17 24
Mn.	- 2 9 16 23 30	Mn.	- - 6 13 20 27	Mn.	- - 5 12 19 26	Mn.	- 2 9 16 23 30	Mn.	- - 7 14 21 28	Mn.	- - 4 11 18 25
Tu.	- 3 10 17 24 31	Tu.	- - 7 14 21 28	Tu.	- - 6 13 20 27	Tu.	- 3 10 17 24 -	Tu.	- 1 8 15 22 29	Tu.	- - 5 12 19 26
Wd.	- 4 11 18 25 -	Wd.	- 1 8 15 22 29	Wd.	- - 7 14 21 28	Wd.	- 4 11 18 25 -	Wd.	- 2 9 16 23 30	Wd.	- - 6 13 20 27
Th.	- 5 12 19 26 -	Th.	- 2 9 16 23 -	Th.	- 1 8 15 22 29	Th.	- 5 12 19 26 -	Th.	- 3 10 17 24 31	Th.	- - 7 14 21 28
Fr.	- 6 13 20 27 -	Fr.	- 3 10 17 24 -	Fr.	- 2 9 16 23 30	Fr.	- 6 13 20 27 -	Fr.	- 4 11 18 25 -	Fr.	- 1 8 15 22 29
Sa.	- 7 14 21 28 -	Sa.	- 4 11 18 25 -	Sa.	- 3 10 17 24 31	Sa.	- 7 14 21 28 -	Sa.	- 5 12 19 26 -	Sa.	- 2 9 16 23 30

CALENDAR 1957.

JANUARY.		FEBRUARY.		MARCH.		APRIL.		MAY.		JUNE.	
Su.	- - 6 13 20 27	Su.	- - 3 10 17 24	Su.	- 3 10 17 24 31	Su.	- - 7 14 21 28	Su.	- - 5 12 19 26	Su.	- 2 9 16 23 30
Mn.	- - 7 14 21 28	Mn.	- - 4 11 18 25	Mn.	- 4 11 18 25 -	Mn.	- 1 8 15 22 29	Mn.	- - 6 13 20 27	Mn.	- 3 10 17 24 31
Tu.	- 1 8 15 22 29	Tu.	- - 5 12 19 26	Tu.	- 5 12 19 26 -	Tu.	- 2 9 16 23 30	Tu.	- - 7 14 21 28	Tu.	- 4 11 18 25 -
Wd.	- 2 9 16 23 30	Wd.	- - 6 13 20 27	Wd.	- 6 13 20 27 -	Wd.	- 3 10 17 24 -	Wd.	- 1 8 15 22 29	Wd.	- 5 12 19 26 -
Th.	- 3 10 17 24 31	Th.	- - 7 14 21 28	Th.	- 7 14 21 28 -	Th.	- 4 11 18 25 -	Th.	- 2 9 16 23 30	Th.	- 6 13 20 27 -
Fr.	- 4 11 18 25 -	Fr.	- 1 8 15 22 -	Fr.	- 1 8 15 22 29 -	Fr.	- 5 12 19 26 -	Fr.	- 3 10 17 24 31	Fr.	- 7 14 21 28 -
Sa.	- 5 12 19 26 -	Sa.	- 2 9 16 23 -	Sa.	- 2 9 16 23 30 -	Sa.	- 6 13 20 27 -	Sa.	- 4 11 18 25 -	Sa.	- 1 8 15 22 29 -

LETTER POSTAGE.

Not exceeding 2 oz. 2½d.
 Each additional 2 oz. or part thereof 1½d.
 No letter to be above 2 feet in length or 18 ins. in width or depth.
 In form of roll 3 feet 3 inches for length and twice the diameter combined (2 feet 8 inches for the greatest dimension).

POST CARD RATE.

For every post card 2d.
 " reply post card 4d.

PARCEL POST.

Not exceeding 2 lbs. 1/3
 " 3 lbs. 1/5
 " 4 lbs. 1/8
 " 5 lbs. 1/11
 " 6 lbs. 2/1
 " 7 lbs. 2/3
 " 8 lbs. 2/6
 " 11 lbs. 2/8
 " 15 lbs. 2/9
 Greatest length, 3 feet 6 inches.
 Greatest length and girth combined, 6 feet.

REGISTERED PACKETS (PARCELS INCLUDED).

A fee of 6d. (in addition to the postage) insures to the amount of £5; 7d., £20; 8d., £40; 9d., £60; 10d., £80; 2/2, £400. Each packet must be marked with the word "Registered," and with the amount of the fee.

REGISTERED NEWS. RATE.

Not exceeding 4 oz. (per copy) ... 1½d.
 For every additional 4 oz. (per copy) ½d.
 Maximum Weight 2 lbs.

PRINTED PAPER RATE.

Not exceeding 2 oz. 1½d.
 For each additional 2 oz. or part thereof up to 2 lb. 1d.
 Sizes same as for letter postage.

BLIND LITERATURE RATE.

Not exceeding 2 lbs. ½d.
 " 5 " 1d.
 " 8 " 1½d.
 " 11 " 2d.
 " 15 " (Max.) 2½d.
 Sizes same as for letter postage.

MONEY ORDERS.

INLAND.—Sums not exceeding
 up to | £20, 10d. | £40, 1/2
 £10, 8d. | £30, 1/- | £50, 1/4
 No single order can be issued for a sum exceeding £50.
 No order may contain a fraction or part of a penny.

POSTAL ORDERS.

s. d. Charge	s. d. Charge
For 0 6.....1½d.	For 10 0.....3d.
" 1 0.....1½d.	" 11 0.....3d.
" 1 6.....2d.	" 12 0.....3d.
" 2 0.....2d.	" 13 0.....3d.
" 2 6.....2d.	" 14 0.....3d.
" 3 0.....2d.	" 15 0.....3d.
" 3 6.....2d.	" 16 0.....3d.
" 4 0.....2d.	" 17 0.....3d.
" 4 6.....2d.	" 18 0.....3d.
" 5 0.....2d.	" 19 0.....3d.
" 6 0.....3d.	" 20 0.....3d.
" 7 0.....3d.	" 21 0.....3d.
" 8 0.....3d.	" 40 0.....6d.
" 9 0.....3d.	

Orders must be cashed within six months of last day of month in which issued. Sender must fill in name of person to whom Order is sent, and he can also fill in the name of any particular Post Office and Order will be cashed at that Office only.

INLAND TELEGRAMS.

12 words 3/-; and every additional word, 3d. Eire, 12 words for 3/6.

BILLS AND PROMISSORY NOTES.

BILL OF EXCHANGE payable on demand, or at sight, or on presentation 2d.
BILL OF EXCHANGE of any other kind whatsoever (except a bank note) and **PROMISSORY NOTE** of any kind whatsoever (except a bank note)—drawn, or expressed to be payable, or actually paid, or endorsed, or in any way negotiated in the United Kingdom, where the amount or value of the money for which the bill or note is drawn or made
 Does not exceed..... s. d.
 Exceeds £10 and does not exceed 25..... 0 2
 " 25 " 50..... 0 6
 " 50 " 75..... 0 9
 " 75 " 100..... 1 0
 And 1s. for every additional £100 or fractional part of £100.

QUARTERLY TERMS.

IN SCOTLAND.		IN ENGLAND.	
Candlemas.....	Feby. 2	Lady Day.....	Mar. 25
Whitsunday.....	May 15	Midsummer.....	June 24
Lammas.....	Aug. 1	Michaelmas.....	Sept. 29
Martinmas.....	Nov. 11	Christmas.....	Dec. 25

BANK HOLIDAYS.

New Year's Day, Good Friday, First Monday in May, First Monday in August, and Christmas.

This Calendar is specially compiled and produced by Stevensons' Dairy Farms. Copyright of all pictures reserved.