

# Calendar 1954

Seventeenth Issue



*Yet it seemeth but a day  
Since the summer flowers were here . . . .  
W. W. ROW*

THE ROCK GARDEN AT CHANGUE



With Greetings from —

*Stevenson's*  
*Dairy Farms*  
**Cumnock.**





THE "BIG MILL"—ROSEBURN.

*Where the tilled earth, with all its fields set free,  
Naked and yellow from the harvest lies,  
By many a loft and busy granary,  
The hum and tumult of the threshers rise;  
There the tanned farmers labour without slack,  
Till twilight deepens round the spouting mill,  
Feeding the loosened sheaves, or with fierce will  
Pitching waist-deep upon the dusty stack.*

ARCHIBALD LAMPMAN.

*Stevenson's*  
*Dairy Farms*  
CUMNOCK.

Telephone: 3255-6

## JANUARY, 1954

New Moon 5th  
Full Moon 19th

<i>Sunday</i>	-	3	10	17	24	31
<i>Monday</i>	-	4	11	18	25	.
<i>Tuesday</i>	-	5	12	19	26	.
<i>Wednesday</i>		6	13	20	27	.
<i>Thursday</i>	-	7	14	21	28	.
<i>Friday</i>	-	1	8	15	22	29
<i>Saturday</i>		2	9	16	23	30





TO FRESH PASTURES—NEWFIELD.

*Sooth't were a pleasant life to lead,  
 With nothing in the world to do  
 But just to blow a shepherd's reed,  
 The silent season thro',  
 And just to drive a flock to feed,—  
 Sheep—quiet, fond and few!*

LAMAN BLANCHARD.

*Stevenson's Dairy Farms  
 Cumnoek.*

Telephone: 3255-6

MARCH, 1954

New Moon 5th  
 Full Moon 19th

Sunday -	.	7	14	21	28
Monday	1	8	15	22	29
Tuesday	2	9	16	23	30
Wednesday	3	10	17	24	31
Thursday	4	11	18	25	.
Friday -	5	12	19	26	.
Saturday	6	13	20	27	.





TO FRESH PASTURES—NEWFIELD.

*Sooth't were a pleasant life to lead,  
 With nothing in the world to do  
 But just to blow a shepherd's reed,  
 The silent season thro',  
 And just to drive a flock to feed,—  
 Sheep—quiet, fond and few!*

LAMAN BLANCHARD.

*Stevenson's Dairy Farms  
 Cumnock.*

Telephone: 3255-6

MARCH, 1954

New Moon 5th  
 Full Moon 19th

<i>Sunday</i> -	.	7	14	21	28
<i>Monday</i> -	1	8	15	22	29
<i>Tuesday</i> -	2	9	16	23	30
<i>Wednesday</i>	3	10	17	24	31
<i>Thursday</i> -	4	11	18	25	.
<i>Friday</i> -	5	12	19	26	.
<i>Saturday</i> -	6	13	20	27	.





BABY PATERSON, MAUCLINE

*What is the little one thinking about?  
 Very wonderful things, no doubt;  
 Unwritten history! Unfathomed mystery!  
 Yet she laughs and cries, and eats and drinks,  
 And chuckles and crows, and nods and winks,  
 As if her head were as full of kinks  
 And curious riddles as any sphinx.*

HOLLAND

*Stevenson's Dairy Farms*  
 Cumnock.

Telephone: 3255-6

MAY, 1954

New Moon 2nd  
 Full Moon 17th

<i>Sunday</i>	-	2	9	16	23	30
<i>Monday</i>	-	3	10	17	24	31
<i>Tuesday</i>	-	4	11	18	25	.
<i>Wednesday</i>		5	12	19	26	.
<i>Thursday</i>	-	6	13	20	27	.
<i>Friday</i>	-	7	14	21	28	.
<i>Saturday</i>	1	8	15	22	29	.





WOODHEAD COTTAGE, CUMNOCK  
*A familiar landmark, recently destroyed by fire*

*A ring o' wa's the hale encloses  
 Frae sheep or men  
 An' there the auld hoosie beeks an' dozes  
 A' by her lane.*

R. L. STEVENSON.

## APRIL, 1954

*New Moon 3rd  
 Full Moon 18th*

<i>Sunday</i>	- .	4	11	18	25
<i>Monday</i>	- .	5	12	19	26
<i>Tuesday</i>	- .	6	13	20	27
<i>Wednesday</i>	. .	7	14	21	28
<i>Thursday</i>	- 1	8	15	22	29
<i>Friday</i>	- - 2	9	16	23	30
<i>Saturday</i>	- 3	10	17	24	.

*Stevenson's Dairy Farms  
 Cumnock.*

Telephone: 3255-6





BABY PATERSON, MAUCLINE

*What is the little one thinking about?  
 Very wonderful things, no doubt;  
 Unwritten history! Unfathomed mystery!  
 Yet she laughs and cries, and eats and drinks,  
 And chuckles and crows, and nods and winks,  
 As if her head were as full of kinks  
 And curious riddles as any sphinx.*

HOLLAND

*Stevenson's Dairy Farms*  
 Cumnock.

Telephone: 3255-6

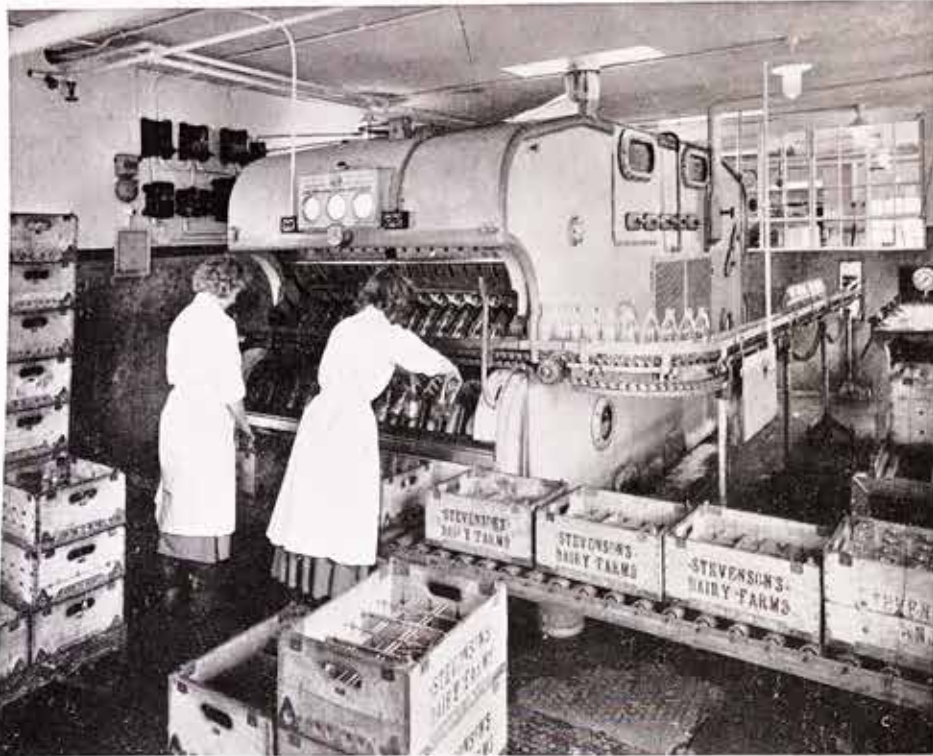
MAY, 1954

New Moon 2nd  
 Full Moon 17th

<i>Sunday</i>	-	2	9	16	23	30
<i>Monday</i>	-	3	10	17	24	31
<i>Tuesday</i>	-	4	11	18	25	.
<i>Wednesday</i>		5	12	19	26	.
<i>Thursday</i>	-	6	13	20	27	.
<i>Friday</i>	-	7	14	21	28	.
<i>Saturday</i>		1	8	15	22	29



# Features of Our Service



In this series we have already dealt with Milk Reception, Cooling, Pasteurising and Bottling; this year we describe the important functions of Bottle Washing and Cold Storage.

## Bottle Washing

The cleanliness of milk bottles is of supreme importance to trader and customer alike. With this in mind we have in use a modern Bottle Washing Machine (the largest and most costly piece of equipment in our dairy) which ensures that sterile bottles, cool, clean and sparkling are delivered to the Filling Machine.

The bottles are fed into pockets in which they are conveyed through the machine and subjected to the various processes. These pockets ensure that each bottle is accurately positioned over the high

pressure jets. After being well rinsed in the first section the bottles pass to the detergent tank where they are thoroughly soaked in a strong solution. In the next section the detergent is washed out with hot water (160°F.). The bottles then pass over a series of cooling jets which have the effect of gradually reducing their temperature to 60°F., ready for filling. Each bottle takes 15 minutes to pass through the various processes and this machine can deal with 4,000 per hour. On emerging from the washer the bottles are automatically placed on a moving belt which conveys them to the bottling plant.

## Cold Storage

To ensure that milk is maintained in the best possible condition after cooling and bottling, cold storage is essential, especially during the warm weather.

The floors, walls, ceiling and doors of the Cold Room are insulated with 4 ins. of cork and finished with smooth cement to facilitate cleaning. Around the walls are nests of coils in which the refrigerant is circulated. Electric fans, suitably placed, ensure that a continuous supply of cold air reaches every part of the chamber. The Refrigerating Unit is situated immediately outside the Store and is of sufficient capacity to maintain a constant temperature of 40°F.



## The Best Milk Costs No More





CROFHEAD MEADOW.

*If weather be fair and tidy thy grain,  
 Make speedy carriage, for fear of rain:  
 For tempest and showers deceiveth a many,  
 And lingering lubbers lose many a penny.*

THOMAS TUSSER.

JUNE, 1954

*New Moon 1st  
 Full Moon 19th  
 New Moon 30th*

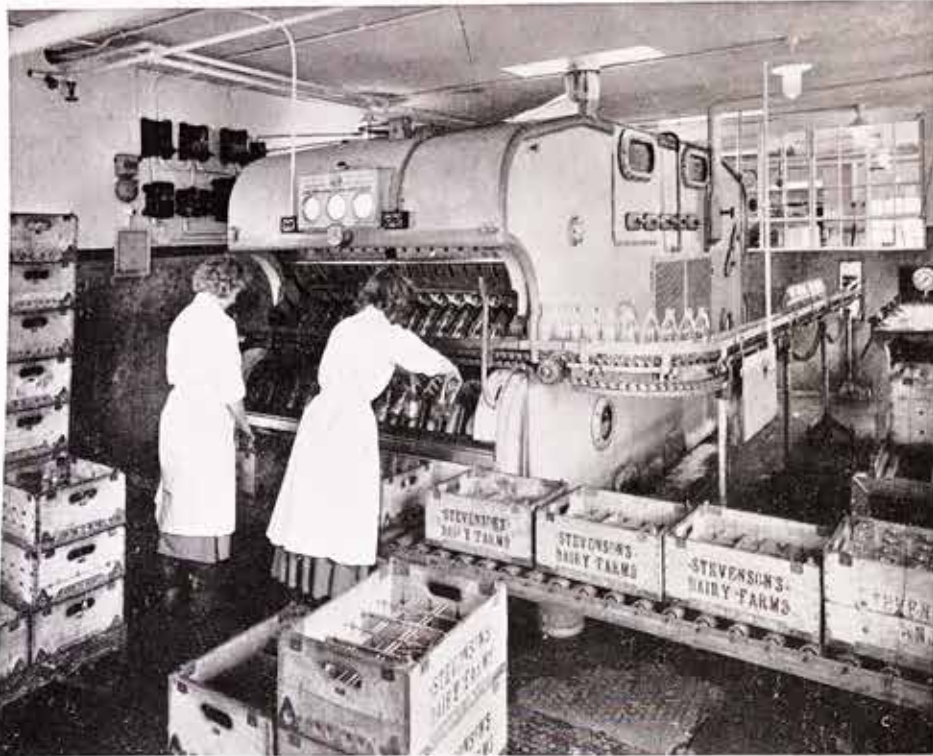
<i>Sunday</i>	- .	6	13	20	27
<i>Monday</i>	- .	7	14	21	28
<i>Tuesday</i>	- 1	8	15	22	29
<i>Wednesday</i>	2	9	16	23	30
<i>Thursday</i>	- 3	10	17	24	.
<i>Friday</i>	- - 4	11	18	25	.
<i>Saturday</i>	- 5	12	19	26	.

*Stevenson's Dairy Farms*  
 Cumnock.

Telephone: 3255-6



# Features of Our Service



In this series we have already dealt with Milk Reception, Cooling, Pasteurising and Bottling; this year we describe the important functions of Bottle Washing and Cold Storage.

## Bottle Washing

The cleanliness of milk bottles is of supreme importance to trader and customer alike. With this in mind we have in use a modern Bottle Washing Machine (the largest and most costly piece of equipment in our dairy) which ensures that sterile bottles, cool, clean and sparkling are delivered to the Filling Machine.

The bottles are fed into pockets in which they are conveyed through the machine and subjected to the various processes. These pockets ensure that each bottle is accurately positioned over the high

pressure jets. After being well rinsed in the first section the bottles pass to the detergent tank where they are thoroughly soaked in a strong solution. In the next section the detergent is washed out with hot water (160°F.). The bottles then pass over a series of cooling jets which have the effect of gradually reducing their temperature to 60°F., ready for filling. Each bottle takes 15 minutes to pass through the various processes and this machine can deal with 4,000 per hour. On emerging from the washer the bottles are automatically placed on a moving belt which conveys them to the bottling plant.

## Cold Storage

To ensure that milk is maintained in the best possible condition after cooling and bottling, cold storage is essential, especially during the warm weather.

The floors, walls, ceiling and doors of the Cold Room are insulated with 4 ins. of cork and finished with smooth cement to facilitate cleaning. Around the walls are nests of coils in which the refrigerant is circulated. Electric fans, suitably placed, ensure that a continuous supply of cold air reaches every part of the chamber. The Refrigerating Unit is situated immediately outside the Store and is of sufficient capacity to maintain a constant temperature of 40°F.



## The Best Milk Costs No More





THE OLD CHURCH SUNDAY SCHOOL TREAT—CHANGUE.

*To many a youth, and many a maid,  
Dancing in the chequered shade.  
And young and old come forth to play  
On a sunshine holiday.*

MILTON.

**JULY, 1954**

*Full Moon 16th  
New Moon 29th*

<i>Sunday</i>	- .	4	11	18	25
<i>Monday</i>	- .	5	12	19	26
<i>Tuesday</i>	- .	6	13	20	27
<i>Wednesday</i>	.	7	14	21	28
<i>Thursday</i>	- 1	8	15	22	29
<i>Friday</i>	- - 2	9	16	23	30
<i>Saturday</i>	- 3	10	17	24	31

*Stevenson's Dairy Farms  
Cumnock.*

Telephone: 3255-6



# CHANGUE AND BANKEND

PEDIGREE AYRSHIRE HERDS

(Established at  
Changee, 1867)

One of the Oldest "Ayrshire" Stocks

## AN OUTSTANDING DAIRY COW

2000 Galls. at 4.2% B.F. in 399 Days

9000 Galls. in first Six Lactations

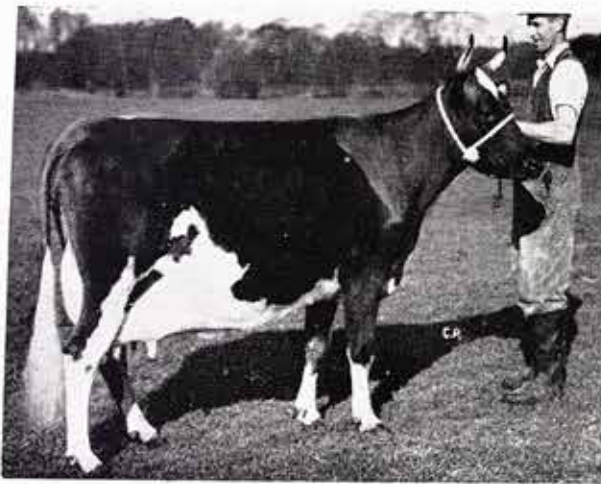
### BANKEND UNTOLD (87721)

DAM: Changee May (36166) App.

by Whitehill Unity (42818)

SIRE: Changee Lucky Lad (50442) App.

by Cowgrove 'Trademark' (43358)



From the facsimile of **UNTOLD'S** latest lactation, it will be seen that her highest daily yield was a modest 67 lbs. Her record of 20,517 lbs., when analysed, produced the remarkably level yield spread of:

Period	Lbs. Milk	% of Total Yield
1st Hundred Days	5742	27.99
2nd " "	5405	26.34
3rd " "	4620	22.52
4th " "	4750	23.15
	20517	100.

This valuable breed characteristic, contributing to health, longevity and profitability is present in many families in our Herds and it is our policy to have it firmly established.

**BANKEND UNTOLD** is the dam of:

**BANKEND NOMINATOR** (93712), Third Prize Junior Bull at Ayr Show and Sale, February, 1950, sold for 1050 gns;  
**BANKEND PEARLSTONE** (100893), Third Prize Junior Bull at Ayr Show and Sale, February, 1951, sold for 1400 gns;  
**BANKEND REBATE** (113683), at present on hire to the Scottish Milk Marketing Board, Southbar A.I. Centre.

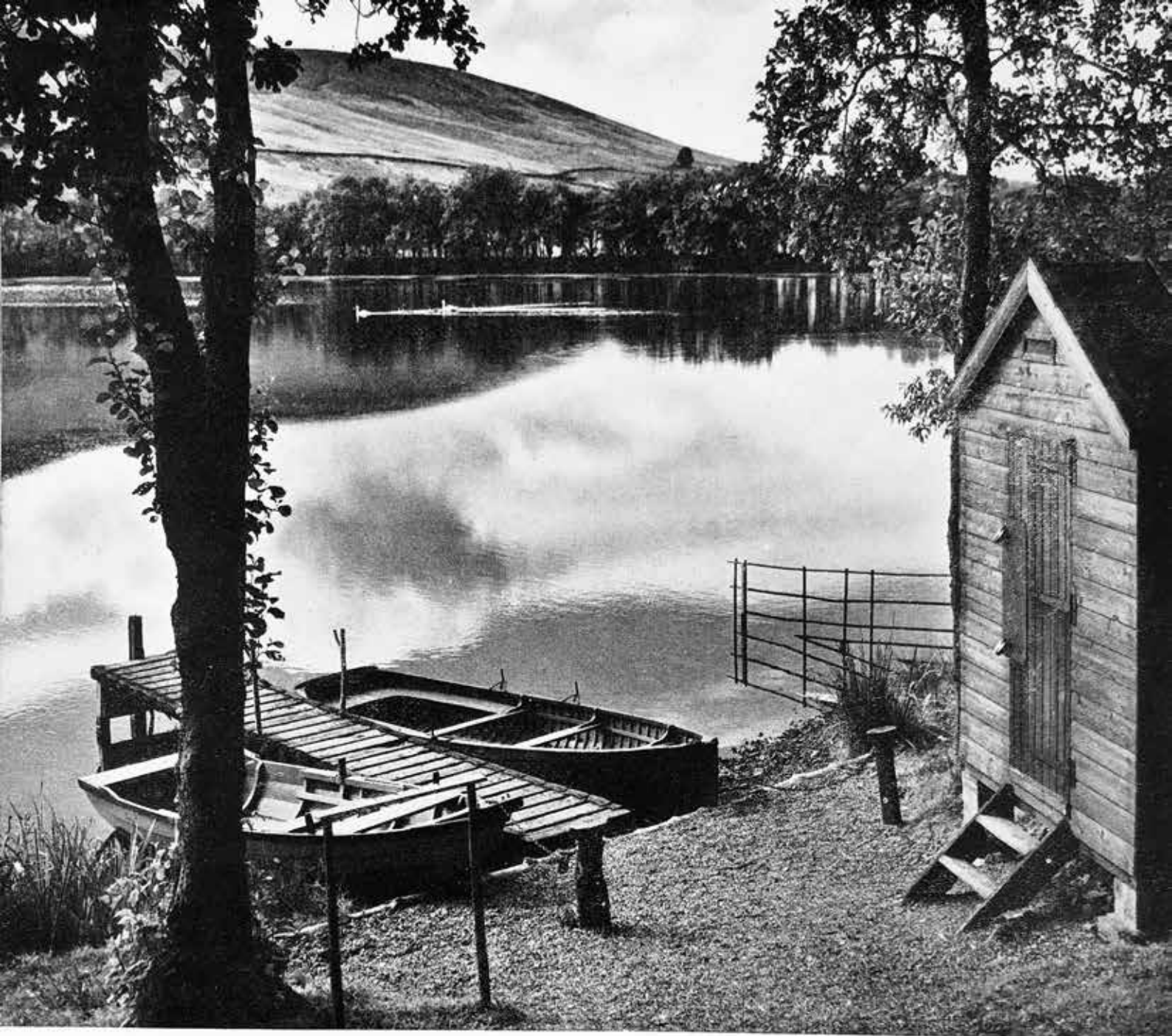
PREVIOUS YIELDS.						
YEAR	Date of Calving	Lbs. Milk	Per Cent. Butter Fat	Days in Milk	Sex of Calf	Size of Calf
1916-17	08/10/16	13274	4.17	354	B	Low Milkmaid 55354
1918	14/03/18	13504	4.25	299	H	Low Milkmaid 55354
1919-20	29/03/19	13781	4.20	316	B	Changee Liberator 42531
1920-21	5/10/20	14366	4.00	301	B	Changee Liberator 42531
1921-22	26/11/21	16111	4.30	331	B	Low Milkmaid 55354

1953						
No. of Lactation	Milk in lbs. daily	Lbs. of Milk for Period	Per Cent. of Fat	Lbs. of Butter Fat for Period	Days covered by Test	Remarks
6						
1st July 1952	52.0	1508	5.2	78.2	29	
2nd July	55.0	1485	4.5	66.8	24	
14th Aug	54.5	1150	4.1	47.1	20	
4th Sept.	64.0	1404	4.4	61.9	21	
2nd Oct.	64.0	1600	4.4	70.4	25	
14th Oct.	60.0	900	3.6	32.4	15	
16th Nov	53.0	1060	3.5	36.1	20	
26th Nov	51.0	1020	4.0	40.8	20	
13th Dec.	50.5	858	4.1	35.1	14	
30th Dec	53.0	901	5.0	45.0	14	
11th Jan 1953	48.0	816	4.4	35.9	14	
16th Feb	44.5	994	3.8	37.8	21	
24th Feb	46.5	834	4.2	35.1	18	
9th Mar	46.0	598	4.2	25.1	13	
11th April	45.0	1140	4.0	46.0	26	
29th April	49.0	1225	4.6	56.3	25	
23rd May	44.5	1188	4.1	48.7	24	
14th June	43.0	1045	3.4	35.4	25	
6th July	38.0	422	4.0	16.8	14	
Totals		20514		869.82	399	19 Tests
Average			4.24			

Completed Field as above 20514 lbs. Milk with 869.82 lbs. Butter Fat  
 Showing an Average of 4.24 % Butter Fat in 399 Days  
 Yield in 305 Days 16262 lbs. Milk 691.80 lbs. Butter Fat  
 \*Insert for twice daily xx For check daily xxx  
 Average Percentage Fat 4.24





THE BOATHOUSE, GLENBUCK.

*The sun looks down from quiet skies  
 To where a quiet water lies,  
 The silent trees stoop down to trees  
 . . . . . And all the water is at ease.*

A. A. MILNE.

SEPTEMBER, 1954 Full Moon 12th  
New Moon 27th

Sunday	-	.	5	12	19	26	
Monday	-	.	6	13	20	27	
Tuesday	-	.	7	14	21	28	
Wednesday	1		8	15	22	29	
Thursday	-	2	9	16	23	30	
Friday	-	-	3	10	17	24	.
Saturday	-	4	11	18	25	.	

Stevenson's Dairy Farms  
 Cumnock.

Telephone: 3255-6



# CHANGUE AND BANKEND

PEDIGREE AYRSHIRE HERDS

(Established at  
Change, 1867)

One of the Oldest "Ayrshire" Stocks

## AN OUTSTANDING DAIRY COW

2000 Galls. at 4.2% B.F. in 399 Days

9000 Galls. in first Six Lactations

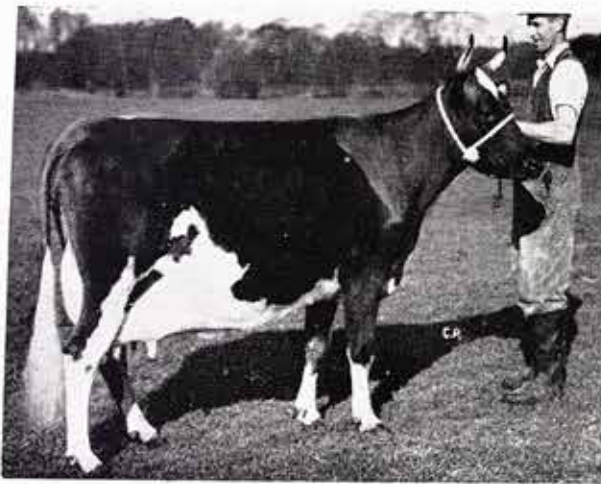
### BANKEND UNTOLD (87721)

DAM: Change May (36166) App.

by Whitehill Unity (42818)

SIRE: Change Lucky Lad (50442) App.

by Cowgrove 'Trademark' (43358)



From the facsimile of **UNTOLD'S** latest lactation, it will be seen that her highest daily yield was a modest 67 lbs. Her record of 20,517 lbs., when analysed, produced the remarkably level yield spread of:

Period	Lbs. Milk	% of Total Yield
1st Hundred Days	5742	27.99
2nd " "	5405	26.34
3rd " "	4620	22.52
4th " "	4750	23.15
	20517	100.

This valuable breed characteristic, contributing to health, longevity and profitability is present in many families in our Herds and it is our policy to have it firmly established.

**BANKEND UNTOLD** is the dam of:

**BANKEND NOMINATOR** (93712), Third Prize Junior Bull at Ayr Show and Sale, February, 1950, sold for 1050 gns;  
**BANKEND PEARLSTONE** (100893), Third Prize Junior Bull at Ayr Show and Sale, February, 1951, sold for 1400 gns;  
**BANKEND REBATE** (113683), at present on hire to the Scottish Milk Marketing Board, Southbar A.I. Centre.

PREVIOUS YIELDS.						
YEAR	Date of Calving	Lbs. Milk	Per Cent. Butter Fat	Days in Milk	Sex of Calf	Size of Calf
1916-17	08/10/16	13274	4.17	354	B	Low Milkmaid 55354
1918	14/10/18	13504	4.25	299	H	Low Milkmaid 55354
1919-20	29/10/19	12781	4.20	316	B	Change Liberator 42531
1920-21	5/11/20	14366	4.00	301	B	Change Liberator 42531
1921-22	26/11/21	16111	4.30	331	B	Low Milkmaid 55354

1953						
No. of Lactation	Milk in lbs. daily	Lbs. of Milk for Period	Per Cent. of Fat	Lbs. of Butter Fat for Period	Days covered by Test	Remarks
6						
1st July 1952	52.0	1508	5.2	48.82	29	
2nd July	55.0	1485	4.5	66.83	24	
14th Aug	54.5	1150	4.1	24.15	20	
4th Sept.	64.0	1404	4.4	61.91	21	
2nd Oct.	64.0	1600	4.4	40.40	25	
14th Oct.	60.0	900	3.6	32.40	15	
16th Nov	53.0	1060	3.5	34.10	20	
26th Nov	51.0	1020	4.0	40.80	20	
13th Dec.	50.5	858	4.1	35.18	14	
30th Dec	53.0	901	5.0	25.05	14	
11th Jan 1953	48.0	816	4.4	35.90	14	
16th Feb	44.5	994	3.8	34.84	31	
24th Feb	46.5	834	4.2	35.15	18	
9th Mar	46.0	598	4.2	25.12	13	
11th April	45.0	1140	4.0	46.80	26	
29th April	49.0	1225	4.6	56.35	25	
23rd May	44.5	1188	4.1	48.41	24	
14th June	43.0	1045	3.4	34.48	25	
6th July	38.0	422	4.0	28.88	14	
Totals		20514		869.82	399	19 Tests
Average			4.24			

Record closed 19th July  
 In calf to Bankend Parade 100892  
 Due to Galva December 1953

Completed Yield as above 20514 lbs. Milk with 869.82 lbs. Butter Fat  
 Showing an Average of 4.24 % Butter Fat in 399 Days  
 Yield in 305 Days 16262 lbs. Milk 694.80 lbs. Butter Fat  
 \*Insert for twice daily milk For check daily milk  
 Average Percentage Fat 4.24





HILLHEAD, COYLTON.

*Welcome to you, rich Autumn days,  
Ere come the cold leaf-picking wind.*

W. H. DAVIES

## OCTOBER, 1954

Full Moon 12th  
New Moon 26th

<i>Sunday</i>	-	3	10	17	24	31
<i>Monday</i>	-	4	11	18	25	.
<i>Tuesday</i>	-	5	12	19	26	.
<i>Wednesday</i>		6	13	20	27	.
<i>Thursday</i>	-	7	14	21	28	.
<i>Friday</i>	-	1	8	15	22	29
<i>Saturday</i>		2	9	16	23	30

*Stevenson's Dairy Farms*  
Cumnock.

Telephone: 3255-6





OONAH, MAGPIE AND SOOTY.

*Good company on a journey  
Makes the way seem shorter.*

IZAAK WALTON.

## NOVEMBER, 1954

Full Moon 10th  
New Moon 25th

Sunday	-	.	7	14	21	28
Monday	-	1	8	15	22	29
Tuesday	-	2	9	16	23	30
Wednesday	3	10	17	24	.	.
Thursday	-	4	11	18	25	.
Friday	-	5	12	19	26	.
Saturday	-	6	13	20	27	.

*Stevenson's Dairy Farms*  
Cumnock.

Telephone: 3255-6





WINTER LANDSCAPE—MILZEOCH, CUMNOCK.

*Hey-ho for the mistletoe,  
The silver frosts and the white snow!*

KATHARINE TYNAN.

*Stevenson's Dairy Farms  
Cumnock.*

Telephone: 3255-6

## DECEMBER, 1954

Full Moon 10th  
New Moon 25th

<i>Sunday</i> - . . .	5	12	19	26
<i>Monday</i> - . . .	6	13	20	27
<i>Tuesday</i> - . . .	7	14	21	28
<i>Wednesday</i> 1	8	15	22	29
<i>Thursday</i> - 2	9	16	23	30
<i>Friday</i> - - 3	10	17	24	31
<i>Saturday</i> - 4	11	18	25	.





AWARDED  
CERTIFICATES  
OF MERIT  
FOR  
CLEAN MILK

Partners  
J. STEVENSON  
J. M. STEVENSON  
W. S. STEVENSON

**Stevenson's** Dairy Farms

Telephones

Cumnock - - 3255-6  
Extension to Changue  
Bankend, Cumnock 3101  
Crofthead - - - 2241

Breeders of Pedigree  
Attested Ayrshire Cattle

Farms:

CHANGUE - BANKEND - CROFTHEAD - NEWFIELD AND  
MURDYKE - - - WORKING DAIRY AT CHANGUE

44-45 The Square  
**CUMNOCK**  
Ayrshire

January, 1954.

Calendar 1954.

Dear Customer,

For some time now it has been our custom to introduce our Calendar with an Open Letter, usually high-lighting recent developments in our Service or, perhaps, referring to some little improvement in the production of the Calendar itself. At the same time, we always welcome the opportunity of conveying, as we now do, our Seasonal Greetings.

It is our constant aim to be worthy of your patronage. With this in mind two evenings were set aside in July of last year to provide customers with an opportunity to inspect our Plant and Premises. The methods used and the measures taken to ensure that our milk supply is safe, sound and reliable were also demonstrated. Despite the incidence of holidays some 1,500 visitors availed themselves of this opportunity to spend an interesting evening on the farm. The success of the venture - which we shall certainly repeat - proved beyond doubt that the housewife is genuinely interested in the source of her milk supply.

During 1953 we also had many visitors from further afield. There were, in fact, 21 parties numbering almost 600 people. Particular mention may be made of a party of 40 Swedish Farmers who, despite the language difficulty, were most enthusiastic in their desire for knowledge of farming practice in this country. Their gift of a model of a Red and White Swedish Cow, as a memento of the occasion, seemed particularly appropriate.

This letter would be incomplete without reference to the November Sale of Pedigree Ayrshire Bulls at Ayr, where our entries gained the leading honours. It is not our purpose to go into detail here - particulars of the event will be found on another page - but we would like to record our appreciation of the messages of congratulation received from so many Ayrshire Breeders and friends.

In many respects 1953 was a notable year and as real progress depends so much on good team-work we readily acknowledge the contribution of our Staff in all that has been achieved.

We wish you and your family Health and Happiness in 1954.

Yours sincerely,

*J. J. & W. Stevenson*



# STEVENSONS' DAIRY FARMS

(J., J., & W. STEVENSON)

OFFICE, RESTAURANT, SHOP & BAKERY: 44-45 THE SQUARE,

## CUMNOCK

TELEPHONE 3255-6

### CALENDAR 1954.

JANUARY.		FEBRUARY.		MARCH.		APRIL.		MAY.		JUNE.	
Su.	3 10 17 24 31	Su.	7 14 21 28	Su.	7 14 21 28	Su.	4 11 18 25	Su.	2 9 16 23 30	Su.	6 13 20 27
Mn.	4 11 18 25	Mn.	1 8 15 22	Mn.	1 8 15 22 29	Mn.	5 12 19 26	Mn.	3 10 17 24 31	Mn.	7 14 21 28
Tu.	5 12 19 26	Tu.	2 9 16 23	Tu.	2 9 16 23 30	Tu.	6 13 20 27	Tu.	4 11 18 25	Tu.	1 8 15 22 29
Wd.	6 13 20 27	Wd.	3 10 17 24	Wd.	3 10 17 24 31	Wd.	7 14 21 28	Wd.	5 12 19 26	Wd.	2 9 16 23 30
Th.	7 14 21 28	Th.	4 11 18 25	Th.	4 11 18 25	Th.	1 8 15 22 29	Th.	6 13 20 27	Th.	3 10 17 24
Fr.	1 8 15 22 29	Fr.	5 12 19 26	Fr.	5 12 19 26	Fr.	2 9 16 23 30	Fr.	7 14 21 28	Fr.	4 11 18 25
Sa.	2 9 16 23 30	Sa.	6 13 20 27	Sa.	6 13 20 27	Sa.	3 10 17 24	Sa.	1 8 15 22 29	Sa.	5 12 19 26

JULY.		AUGUST.		SEPTEMBER.		OCTOBER.		NOVEMBER.		DECEMBER.	
Su.	4 11 18 25	Su.	1 8 15 22 29	Su.	5 12 19 26	Su.	3 10 17 24 31	Su.	7 14 21 28	Su.	5 12 19 26
Mn.	5 12 19 26	Mn.	2 9 16 23 30	Mn.	6 13 20 27	Mn.	4 11 18 25	Mn.	1 8 15 22 29	Mn.	6 13 20 27
Tu.	6 13 20 27	Tu.	3 10 17 24 31	Tu.	7 14 21 28	Tu.	5 12 19 26	Tu.	2 9 16 23 30	Tu.	7 14 21 28
Wd.	7 14 21 28	Wd.	4 11 18 25	Wd.	1 8 15 22 29	Wd.	6 13 20 27	Wd.	3 10 17 24	Wd.	1 8 15 22 29
Th.	1 8 15 22 29	Th.	5 12 19 26	Th.	2 9 16 23 30	Th.	7 14 21 28	Th.	4 11 18 25	Th.	2 9 16 23 30
Fr.	2 9 16 23 30	Fr.	6 13 20 27	Fr.	3 10 17 24	Fr.	1 8 15 22 29	Fr.	5 12 19 26	Fr.	3 10 17 24 31
Sa.	3 10 17 24 31	Sa.	7 14 21 28	Sa.	4 11 18 25	Sa.	2 9 16 23 30	Sa.	6 13 20 27	Sa.	4 11 18 25

### CALENDAR 1955.

JANUARY.		FEBRUARY.		MARCH.		APRIL.		MAY.		JUNE.	
Su.	2 9 16 23 30	Su.	6 13 20 27	Su.	6 13 20 27	Su.	3 10 17 24	Su.	1 8 15 22 29	Su.	5 12 19 26
Mn.	3 10 17 24 31	Mn.	7 14 21 28	Mn.	7 14 21 28	Mn.	4 11 18 25	Mn.	2 9 16 23 30	Mn.	6 13 20 27
Tu.	4 11 18 25	Tu.	1 8 15 22	Tu.	1 8 15 22 29	Tu.	5 12 19 26	Tu.	3 10 17 24 31	Tu.	7 14 21 28
Wd.	5 12 19 26	Wd.	2 9 16 23	Wd.	2 9 16 23 30	Wd.	6 13 20 27	Wd.	4 11 18 25	Wd.	1 8 15 22 29
Th.	6 13 20 27	Th.	3 10 17 24	Th.	3 10 17 24 31	Th.	7 14 21 28	Th.	5 12 19 26	Th.	2 9 16 23 30
Fr.	7 14 21 28	Fr.	4 11 18 25	Fr.	4 11 18 25	Fr.	1 8 15 22 29	Fr.	6 13 20 27	Fr.	3 10 17 24
Sa.	1 8 15 22 29	Sa.	5 12 19 26	Sa.	5 12 19 26	Sa.	2 9 16 23 30	Sa.	7 14 21 28	Sa.	4 11 18 25

#### LETTER POSTAGE.

Not exceeding 2 oz. .... 2½d.  
 The next 2 oz. .... ½d.  
 Each additional 2 oz. or fraction of 2 oz. .... 1d.  
 No letter to be above 2 feet in length or 18 ins. in width or depth.

#### POST CARD RATE.

For every post card ..... 2d.  
 " reply post card ..... 4d.

#### PARCEL POST.

Not exceeding 2 lbs. .... 1/-  
 " 3 lbs. .... 1/2  
 " 4 lbs. .... 1/4  
 " 5 lbs. .... 1/6  
 " 6 lbs. .... 1/8  
 " 7 lbs. .... 1/10  
 " 8 lbs. .... 1/11  
 " 11 lbs. .... 2/-  
 " 15 lbs. .... 2/1

Greatest length, 3 feet 6 inches.  
 Greatest length and girth combined, 6 feet

#### REGISTERED PACKETS

(PARCELS INCLUDED).

A fee of 6d. (in addition to the postage) insures to the amount of £5; 7d., £20; 8d., £40; 9d., £60; 10d., £80; 2/2, £400. Each packet must be marked with the word "Registered," and with the amount of the fee.

#### REGISTERED NEWS. RATE.

Not exceeding 4 oz. (per copy) .... 1½d.  
 For every additional 4 oz. (per copy) ½d.  
 Maximum Weight 2 lbs.

#### PRINTED PAPER RATE.

Not exceeding 4 oz. .... 1½d.  
 For each additional 2 oz. or fraction of 2 oz. up to 2 lb. .... ½d.

#### BLIND LITERATURE RATE.

Not exceeding 2 lbs. .... ½d.  
 " 5 " ..... 1d.  
 " 8 " ..... 1½d.  
 " 11 " ..... 2d.  
 " 15 " (Max.) ..... 2½d.

#### MONEY ORDERS.

INLAND.—Sums not exceeding  
 up to | £20, 10d. | £40, 1/2  
 £10, 8d. | £30, 1/- | £50, 1/4  
 No single order can be issued for a sum exceeding £50.  
 No order may contain a fraction or part of a penny.

#### POSTAL ORDERS.

s. d. Charge	s. d. Charge
For 0 6.....1½d.	For 10 0.....3d.
" 1 0.....1½d.	" 11 0.....3d.
" 1 6.....2d.	" 12 0.....3d.
" 2 0.....2d.	" 13 0.....3d.
" 2 6.....2d.	" 14 0.....3d.
" 3 0.....2d.	" 15 0.....3d.
" 3 6.....2d.	" 16 0.....3d.
" 4 0.....2d.	" 17 0.....3d.
" 4 6.....2d.	" 18 0.....3d.
" 5 0.....2d.	" 19 0.....3d.
" 6 0.....3d.	" 20 0.....3d.
" 7 0.....3d.	" 21 0.....3d.
" 8 0.....3d.	" 40 0.....6d.
" 9 0.....3d.	

Orders must be cashed within six months of last day of month in which issued. Sender must fill in name of person to whom Order is sent, and he can also fill in the name of any particular Money Order Office, and Order will be cashed at that Office only.

#### INLAND TELEGRAMS.

12 words 1/6; and every additional word, 1½d. Eire, 12 words for 2/-.

#### BILLS AND PROMISSORY NOTES.

BILL OF EXCHANGE payable on demand, or at sight, or on presentation ..... 2d

BILL OF EXCHANGE of any other kind whatsoever (except a bank note) and PROMISSORY NOTE of any kind whatsoever (except a bank note)—drawn, or expressed to be payable, or actually paid, or endorsed, or in any way negotiated in the United Kingdom, where the amount or value of the money for which the bill or note is drawn or made

	s. d.
Does not exceed.....	£10..... 0 2
Exceeds £10 and does not exceed 25.....	0 3
" 25 ".....	0 6
" 50 ".....	0 9
" 75 ".....	1 0
" 100 ".....	1 0

And 1s. for every additional £100 or fractional part of £100.

#### QUARTERLY TERMS.

IN SCOTLAND.		IN ENGLAND.	
Candlemas.....	Feby. 2	Lady Day.....	Mar. 25
Whitsunday.....	May 15	Midsummer.....	June 24
Lammas.....	Aug. 1	Michaelmas.....	Sept 29
Martinmas.....	Nov. 11	Christmas.....	Dec. 25

#### BANK HOLIDAYS.

New Year's Day, Good Friday, First Monday in May  
 First Monday in August, and Christmas.

This Calendar is specially compiled and produced by  
 Stevensons' Dairy Farms. Copyright of all pictures reserved.