

Calendar

(Sixteenth Production)

1953

1953



PROMISING YOUNGSTERS.

With the Compliments of—

Stebensons' Dairy Farms,
Cumnock.



TRAVELLING CLOUDS—NEW CUMNOCK.

*And always light, aerial, underneath
Goes the elate metre of her wheels.*
STEPHEN SPENDER.

JANUARY, 1953 New Moon—15th.
Full Moon—29th.

Sunday	-	•	4	11	18	25
Monday	-	•	5	12	19	26
Tuesday	-	•	6	13	20	27
Wednesday	•		7	14	21	28
Thursday	-	1	8	15	22	29
Friday	-	2	9	16	23	30
Saturday	-	3	10	17	24	31

*Stevenson's Dairy Farms
Cumnock.*

Telephone: 8255-6



GOOD COMPANIONS.

*Sweet childish days, that were as long
As twenty days are now.*

WORDSWORTH.

Stevenson's Dairy Farms
Cumnock.
Telephone: 3255-6

FEBRUARY, 1953 New Moon—14th.
Full Moon—28th.

<i>Sunday</i>	-	1	8	15	22	•
<i>Monday</i>	-	2	9	16	23	•
<i>Tuesday</i>	-	3	10	17	24	•
<i>Wednesday</i>		4	11	18	25	•
<i>Thursday</i>	-	5	12	19	26	•
<i>Friday</i>	-	6	13	20	27	•
<i>Saturday</i>	-	7	14	21	28	•



THE DAIRY BUILDINGS—CHANGUE.

The greater part of progress is
the desire to progress.

SENECA.

Stevenson's Dairy Farms
Cummoek.
Telephone: 3255-6

MARCH, 1953		New Moon—15th.		Full Moon—30th.	
<i>Sunday</i>	- 1 8 15 22 29				
<i>Monday</i>	- 2 9 16 23 30				
<i>Tuesday</i>	- 3 10 17 24 31				
<i>Wednesday</i>	4 11 18 25 •				
<i>Thursday</i>	- 5 12 19 26 •				
<i>Friday</i>	- - 6 13 20 27 •				
<i>Saturday</i>	- 7 14 21 28 •				

CHANGUE AND BANKEND

PEDIGREE AYRSHIRE HERDS

(Established at
Change, 1867)

One of the Oldest "Ayrshire" Stocks



MR. JAMES STEVENSON receiving the prize from J. B. Douglas, Esq.,
C.B.E., J.P., Chairman, Scottish Milk Marketing Board.

SCOTTISH MILK YIELD AND BUTTER FAT COMPETITION

sponsored by

British Oil and Cake Mills Ltd.

In this most exacting Competition open to all Dairy Breeders in Scotland, the team from the Bankend Herd won second place with an average yield of 13,346 lbs. of milk at 4.25% butter fat. The Ayrshire Breed provided the largest entry and the performance of the Bankend team was the best in that section.



THE BANKEND TEAM.

Photographed February, 1952.

For the purposes of the Competition, milk yields were calculated on 25% of the stock in a single herd. Below we give the average over-all performance of our three herds as certified by the Scottish Milk Records Association, for the same year, together with the corresponding figures for 1949 and 1950.

1949	98	Cows and Heifers	averaged	10185	lbs.	of milk	at 4.14%	butter fat	in 305 days.
1950	115	"	averaged	10760	"	"	at 4.13%	"	in 305 days.
1951	108	"	averaged	10869	"	"	at 4.19%	"	in 305 days.

NOTE.—These yields are produced on high lying land ranging from 400 to 750 feet above sea level.

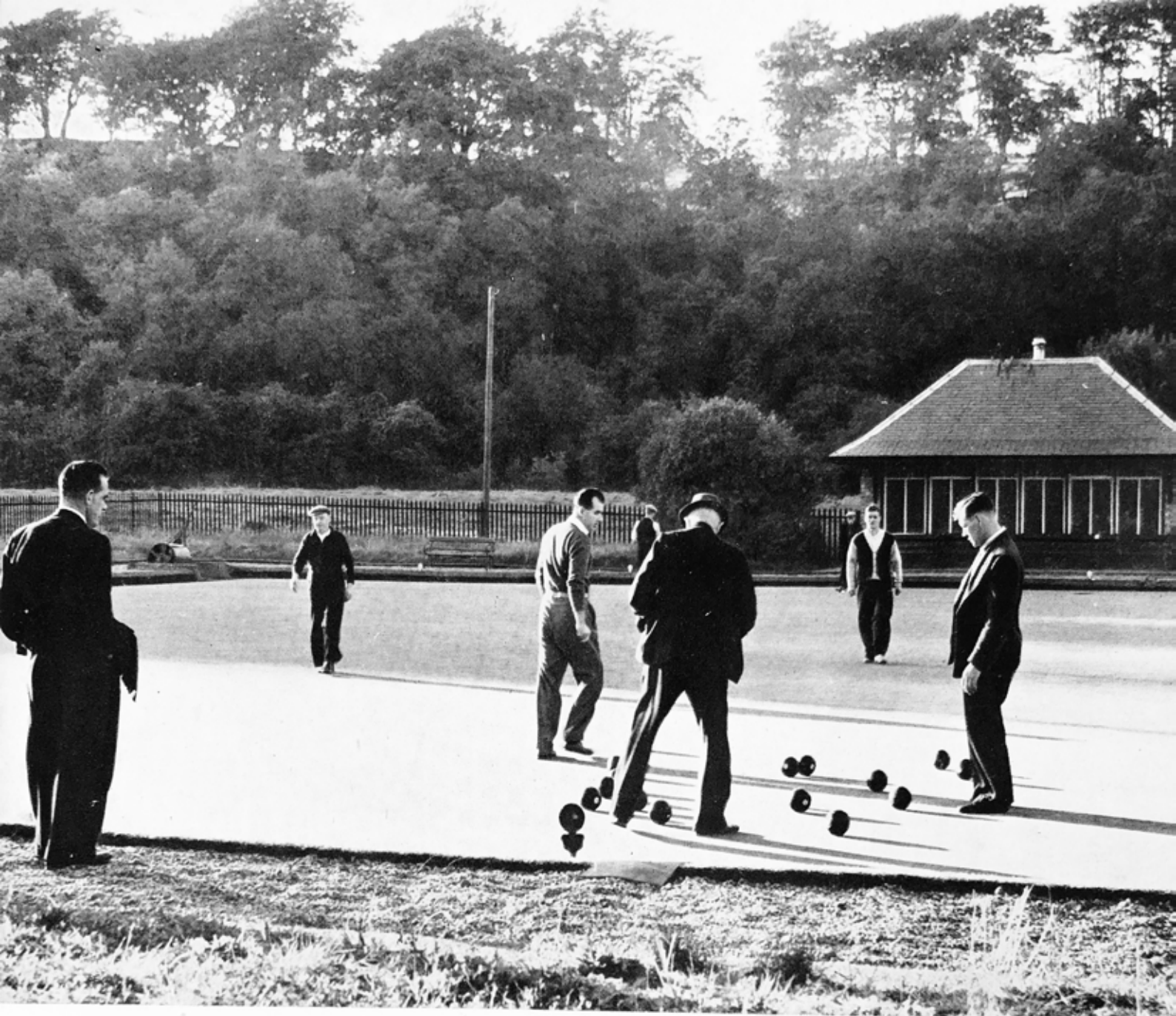


TWO AND TWO MADE FIVE!

*School-days, School-days,
 Dear old golden rule days,
 Readin' and writin' and 'rithmetic,
 Taught to the tune of the hick'ry stick!*
 W. D. COBB.

Stevenson's Dairy Farms
 Cumnoek
 Telephone: 8255-6

		APRIL, 1953				<i>New Moon—13th. Full Moon—29th.</i>	
<i>Sunday</i>	- .	5	12	19	26		
<i>Monday</i>	- .	6	13	20	27		
<i>Tuesday</i>	- .	7	14	21	28		
<i>Wednesday</i>	1	8	15	22	29		
<i>Thursday</i>	- 2	9	16	23	30		
<i>Friday</i>	- - 3	10	17	24	.		
<i>Saturday</i>	- 4	11	18	25	.		



LUGAR—The "End" of the Day.

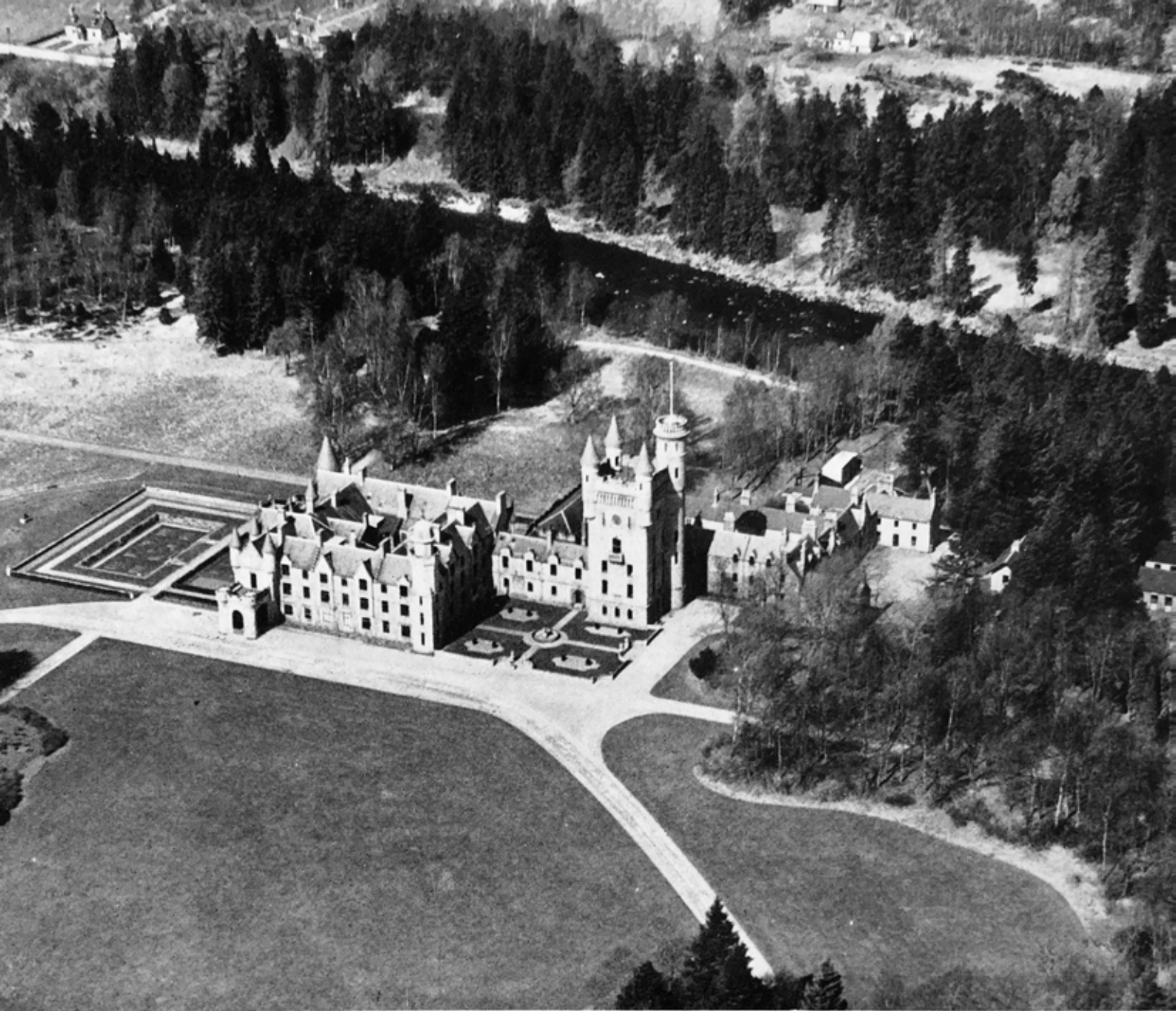
When fallen dews with spangles deck'd the
glade,
And the low sun had lengthen'd ev'ry shade.
POPE.

Stevenson's Dairy Farms
Cumnock.

Telephone: 3255-6

MAY, 1953 New Moon—13th.
Full Moon—28th.

Sunday -	3	10	17	24	31
Monday -	4	11	18	25	•
Tuesday -	5	12	19	26	•
Wednesday	6	13	20	27	•
Thursday -	7	14	21	28	•
Friday -	1	8	15	22	29
Saturday	2	9	16	23	30



BALMORAL CASTLE—"Four grey walls and four grey towers, Overlook a space of flowers." TENNYSON.

God Save
Our
Gracious Queen

Stevenson's Dairy Farms
Cumnock.

Telephone: 3255-6

JUNE, 1953 New Moon—11th
Full Moon—27th.

Sunday	-	•	7	14	21	28
Monday	-	1	8	15	22	29
Tuesday	-	2	9	16	23	30
Wednesday	3	10	17	24	•	
Thursday	-	4	11	18	25	•
Friday	-	5	12	19	26	•
Saturday	-	6	13	20	27	•



GLENBUCK LOCH, MUIRKIRK

*There's double beauty whenever a swan
Swims on a lake, with her double thereon.*

HOOD.

*Stevenson's Dairy Farms
Cumnock.*

Telephone: 3255-6

JULY, 1953 *New Moon—11th.
Full Moon—26th.*

<i>Sunday</i>	-	•	5	12	19	26
<i>Monday</i>	-	•	6	13	20	27
<i>Tuesday</i>	-	•	7	14	21	28
<i>Wednesday</i>	1		8	15	22	29
<i>Thursday</i>	-	2	9	16	23	30
<i>Friday</i>	-	3	10	17	24	31
<i>Saturday</i>	-	4	11	18	25	•



WHEN I GROW UP TO BE A MAN . . .

*boy's will is the wind's will
and the thoughts of youth are long, long
thoughts."*

LONGFELLOW.

*Stevenson's Dairy Farms
Cumnoek.*

Telephone: 3255-6

AUGUST, 1953

New Moon—9th.
Full Moon—24th.

Sunday	-	2	9	16	23	30
Monday	-	3	10	17	24	31
Tuesday	-	4	11	18	25	•
Wednesday		5	12	19	26	•
Thursday	-	6	13	20	27	•
Friday	-	7	14	21	28	•
Saturday	1	8	15	22	29	•



STACKING—BANKEND.

*Heap high the farmer's wintry hoard!
 Heap high the golden corn,
 No richer gift has Autumn poured
 From out her lavish horn!*

WHITTIER.

Stevenson's Dairy Farms
 Cumnoek.

Telephone 3255-6

SEPTEMBER, 1953 New Moon— 8th.
Full Moon—23rd.

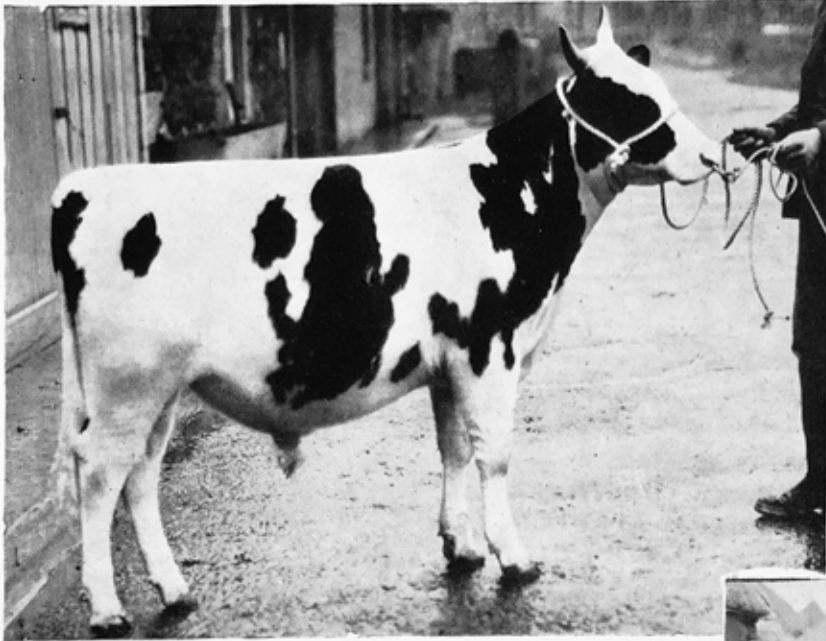
<i>Sunday</i>	-	•	6	13	20	27
<i>Monday</i>	-	•	7	14	21	28
<i>Tuesday</i>	-	1	8	15	22	29
<i>Wednesday</i>	2	9	16	23	30	
<i>Thursday</i>	-	3	10	17	24	•
<i>Friday</i>	-	4	11	18	25	•
<i>Saturday</i>	-	5	12	19	26	•

CHANGUE AND BANKEND

PEDIGREE AYRSHIRE HERDS

(Established at
Change, 1867)

One of the Oldest "Ayrshire" Stocks



BANKEND "QUARTZ."

BANKEND "QUARTZ" (107546).

Dam—Findowrie "Kitten" (42794).

Sire—Bankend "Kitchener" (69145).

(Approved Sire).

Purchased by Mr. W. D. Williams, Plas, Llangwyfan, Anglesey, at Ayr Show and Sale, November, 1952, for 540 guineas.

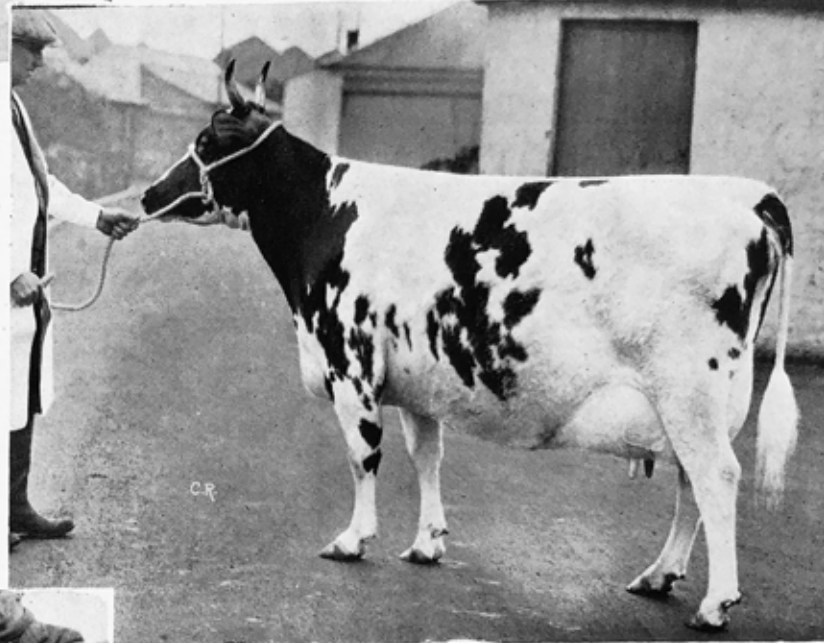
CHANGUE "CISSIE 2nd" (58874).

Dam—Changue "Choice 7th" (63618).

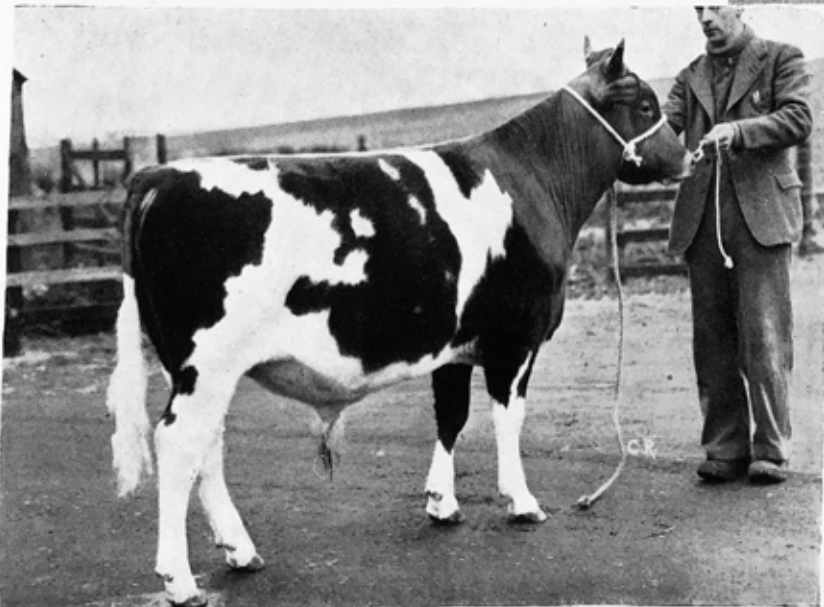
Sire—Low Milton "Wanderer" (55348).

(Approved Sire).

"Cissie 2nd", a member of the Changue "Choice" family, has averaged 11,961 lbs. of milk at 4.30% b.f. over her three lactations.



CHANGUE "CISSIE 2ND."



CHANGUE "QUAKER BOY."

CHANGUE "QUAKER BOY" (104985).

Dam—Changue "Clover 3rd" (32461).

Sire—Lessnessock "Pendragon" (92322).

Purchased by Mr. C. Hourston, North Mains of Barra, Oldmeldrum, Aberdeenshire, at Ayr Show and Sale, February, 1952, for 640 guineas.

Ayr and Lanark Spring and Autumn Sales.

The two Bulls illustrated above were our highest priced entries at the Ayr Sales in 1952. At the Lanark Sales, to which we have consigned Bulls for almost 50 years, our entries in November last gained Second Prize in the Junior Class and First Prize for the Group of Three.



LEARN YOUNG . . .

*How beautiful is youth, how brightly it gleams
With its illusions, aspirations, dreams.*

LONGFELLOW.

*Stevenson's Dairy Farms
Cumnock.*

Telephone: 8255-6

OCTOBER, 1953 *New Moon— 8th.
Full Moon—22nd.*

<i>Sunday</i>	-	•	4	11	18	25
<i>Monday</i>	-	•	5	12	19	26
<i>Tuesday</i>	-	•	6	13	20	27
<i>Wednesday</i>	•		7	14	21	28
<i>Thursday</i>	-	1	8	15	22	29
<i>Friday</i>	-	2	9	16	23	30
<i>Saturday</i>	-	3	10	17	24	31



AYR ROAD, CUMNOCK.

*No warmth, no cheerfulness, no healthful
ease,
No comfortable feel in any member—
No shade, no shine, no butterflies, no bees,
No fruits, no flowers, no leaves, no birds,
November!*

HOOD.

*Stevenson's
Dairy Farms
Cumnock.*

Telephone: 3255-6

NOVEMBER, 1953 New Moon—6th.
Full Moon—20th.

<i>Sunday</i>	-	1	8	15	22	29
<i>Monday</i>	-	2	9	16	23	30
<i>Tuesday</i>	-	3	10	17	24	•
<i>Wednesday</i>	-	4	11	18	25	•
<i>Thursday</i>	-	5	12	19	26	•
<i>Friday</i>	-	6	13	20	27	•
<i>Saturday</i>	-	7	14	21	28	•



WOODROAD PARK,
CUMNOCK.

*Come, ye maids of the vanity-box
Come, ye men of the stifling air;
The white wind waits at your door and knocks
The white snow calls you every where.*

WILSON MACDONALD.

*Stevenson's Dairy Farms
Cumnock.*

Telephone: 3255-6

DECEMBER, 1953

New Moon— 6th.
Full Moon—20th.

<i>Sunday</i>	-	.	6	13	20	27
<i>Monday</i>	-	.	7	14	21	28
<i>Tuesday</i>	-	1	8	15	22	29
<i>Wednesday</i>	-	2	9	16	23	30
<i>Thursday</i>	-	3	10	17	24	31
<i>Friday</i>	-	4	11	18	25	.
<i>Saturday</i>	-	5	12	19	26	.



Partners
J. STEVENSON
J. M. STEVENSON
W. S. STEVENSON

Telephones

Cumnock - - 3255-6
Extension to Changue
Bankend, Cumnock 3101
Crofthead - - - 2241

Breeders of Pedigree
Attested Ayrshire Cattle

Farms:

CHANGUE - BANKEND - CROFTHEAD AND NEWFIELD
WORKING DAIRY AT CHANGUE

44-45 The Square
CUMNOCK
Ayrshire

January, 1953.

Dear Customer,

Calendar 1953.

Here is your copy of our 1953 Calendar, with the usual array of local pictures and selected quotations. In the choice and arrangement of these, our aim is to give you something more than a calendar with a mere recital of dates and we hope that you and your friends will find this, the sixteenth issue, a source of interest and pleasure throughout the year.

In past years our Cover pictures have been in keeping with the Festive Season. This year, by way of a change, we have chosen a group of young calves, a subject of real farming flavour and one directly associated with MILK. These well-grown youngsters are symbolic of the Health and Vigour so essential in all young life. The Ayrshire herd at Changue of which they form part, has been established now for 85 years and the discerning Ayrshire Breeder may note certain characteristics of consistency and type generally attributed to sound breeding practice.

On the March page we reproduce a photograph of our Working Dairy at Changue. The buildings present rather a pleasing appearance and seem to bespeak their purpose. Those visiting the Dairy during the year were most impressed on seeing in operation the plant illustrated in last year's Calendar. It is indeed rewarding to find that the thought and effort expended on this major development in our business is so much appreciated - not least by those in authority.

This is Coronation year and as a tribute to our young and lovely Queen we have chosen for June a view of Her Majesty's Scottish Home. Let us pray that she may be granted the strength and the courage to fulfill her onerous duties in the years to come.

In conclusion, we should like to express our appreciation to members of staff who so willingly support us in our efforts to provide you with a really first class service. We unite with them in wishing you and your family, Good Health and Happiness in 1953.

Yours sincerely,

J. J. & W. Stevenson

AWARDED
CERTIFICATES
OF MERIT
FOR
CLEAN MILK

Partners
J. STEVENSON
J. M. STEVENSON
W. S. STEVENSON

Stevenson's Dairy Farms

Telephones

Cumnock . . . 2255-4
Extension to Changue
Bankend, Cumnock 3101
Crofthead . . . 2241

Breeders of Pedigree
Attested Ayrshire Cattle

Farms:

CHANGUE - BANKEND - CROFTHEAD AND NEWFIELD
WORKING DAIRY AT CHANGUE

44-45 The Square
CUMNOCK
Ayrshire

JANUARY, 1953

Sunday	4	11	18	25	
Monday	5	12	19	26	
Tuesday	6	13	20	27	
Wednesday	7	14	21	28	
Thursday	1	8	15	22	29
Friday	2	9	16	23	30
Saturday	3	10	17	24	31

FEBRUARY, 1953

Sunday	1	8	15	22	.
Monday	2	9	16	23	.
Tuesday	3	10	17	24	.
Wednesday	4	11	18	25	.
Thursday	5	12	19	26	.
Friday	6	13	20	27	.
Saturday	7	14	21	28	.

MARCH, 1953

Sunday	1	8	15	22	29
Monday	2	9	16	23	30
Tuesday	3	10	17	24	31
Wednesday	4	11	18	25	.
Thursday	5	12	19	26	.
Friday	6	13	20	27	.
Saturday	7	14	21	28	.

APRIL, 1953

Sunday	5	12	19	26	
Monday	6	13	20	27	
Tuesday	7	14	21	28	
Wednesday	1	8	15	22	29
Thursday	2	9	16	23	30
Friday	3	10	17	24	.
Saturday	4	11	18	25	.

MAY, 1953

Sunday	3	10	17	24	31
Monday	4	11	18	25	.
Tuesday	5	12	19	26	.
Wednesday	6	13	20	27	.
Thursday	7	14	21	28	.
Friday	1	8	15	22	29
Saturday	2	9	16	23	30

JUNE, 1953

Sunday	7	14	21	28	
Monday	1	8	15	22	29
Tuesday	2	9	16	23	30
Wednesday	3	10	17	24	.
Thursday	4	11	18	25	.
Friday	5	12	19	26	.
Saturday	6	13	20	27	.

JULY, 1953

Sunday	5	12	19	26	
Monday	6	13	20	27	
Tuesday	7	14	21	28	
Wednesday	1	8	15	22	29
Thursday	2	9	16	23	30
Friday	3	10	17	24	31
Saturday	4	11	18	25	.

AUGUST, 1953

Sunday	2	9	16	23	30
Monday	3	10	17	24	31
Tuesday	4	11	18	25	.
Wednesday	5	12	19	26	.
Thursday	6	13	20	27	.
Friday	7	14	21	28	.
Saturday	1	8	15	22	29

SEPTEMBER, 1953

Sunday	6	13	20	27	
Monday	7	14	21	28	
Tuesday	1	8	15	22	29
Wednesday	2	9	16	23	30
Thursday	3	10	17	24	.
Friday	4	11	18	25	.
Saturday	5	12	19	26	.

OCTOBER, 1953

Sunday	4	11	18	25	
Monday	5	12	19	26	
Tuesday	6	13	20	27	
Wednesday	7	14	21	28	
Thursday	1	8	15	22	29
Friday	2	9	16	23	30
Saturday	3	10	17	24	31

NOVEMBER, 1953

Sunday	1	8	15	22	29
Monday	2	9	16	23	30
Tuesday	3	10	17	24	.
Wednesday	4	11	18	25	.
Thursday	5	12	19	26	.
Friday	6	13	20	27	.
Saturday	7	14	21	28	.

DECEMBER, 1953

Sunday	6	13	20	27	
Monday	7	14	21	28	
Tuesday	1	8	15	22	29
Wednesday	2	9	16	23	30
Thursday	3	10	17	24	31
Friday	4	11	18	25	.
Saturday	5	12	19	26	.

This calendar is specially compiled and produced by
Stevenson's Dairy Farms. Copyright of all pictures reserved.