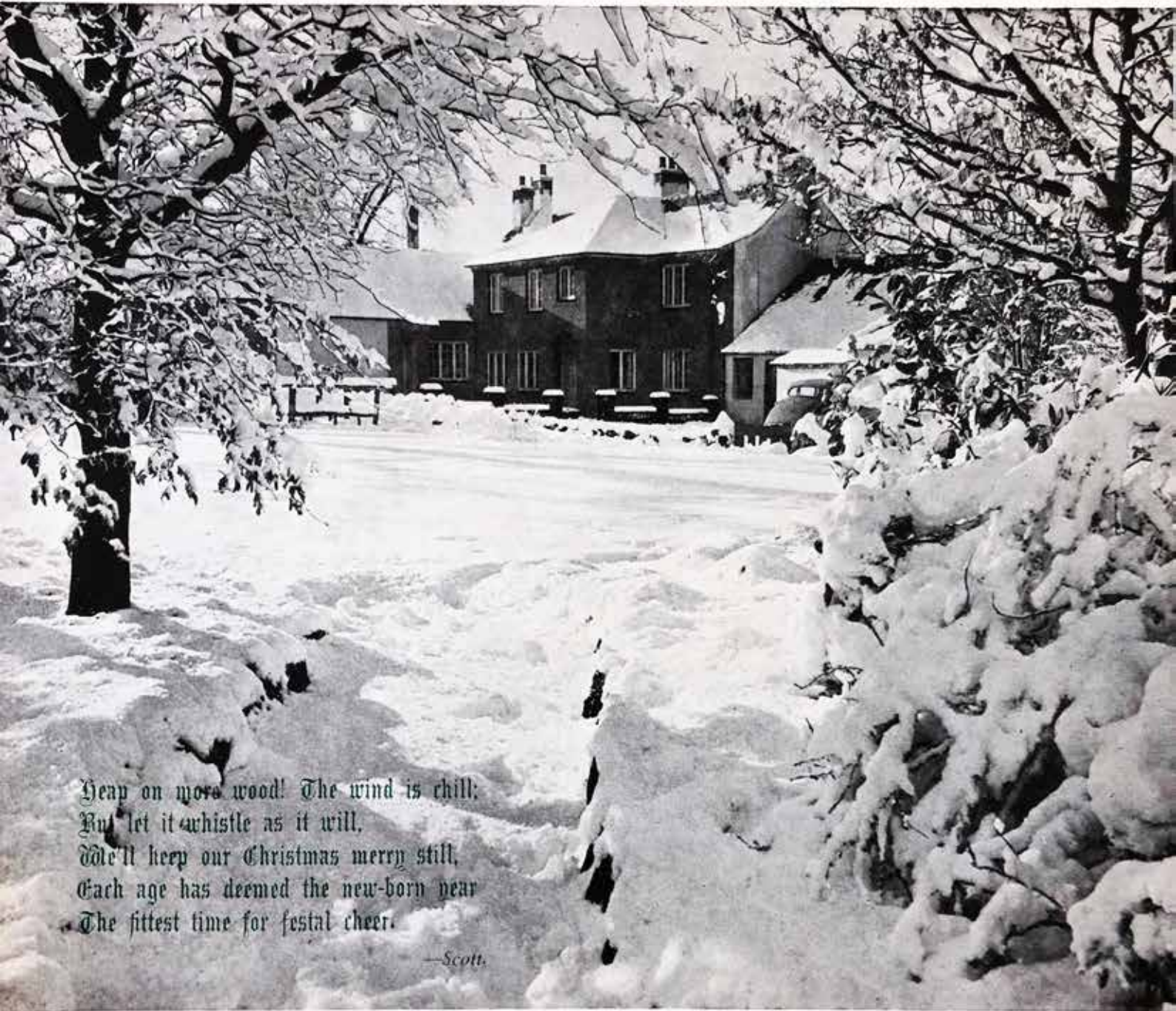


With the Compliments of \_\_\_\_\_



Heap on more wood! The wind is chill;  
But let it whistle as it will,  
Idle'll keep our Christmas merry still,  
Each age has deemed the new-born year  
The fittest time for festal cheer.

—Scott.

CHANGUE.

Stebensons' Dairy Farms,  
Cumnock.

Calendar

1952



WINTER KEEP.

*Now hairst-time is ower, and a fig for the laird,  
My rent's now secure for the toillin' o't;  
My fields a' are bare, and my crops in the yard,  
And I'm nae mair in doubts o' the spoillin' o't.*

ANDREW SCOTT.

*Stevenson's  
Dairy Farms  
Cumnock.*

Telephone: 3255-6.

## JANUARY, 1952

Full Moon—12th.  
New Moon—26th.

<i>Sunday</i>	-	•	6	13	20	27	
<i>Monday</i>	-	•	7	14	21	28	
<i>Tuesday</i>	-	1	8	15	22	29	
<i>Wednesday</i>	2	9	16	23	30		
<i>Thursday</i>	-	3	10	17	24	31	
<i>Friday</i>	-	-	4	11	18	25	•
<i>Saturday</i>	-	5	12	19	26	•	



ADDIE AND "WHISKERS."

*O for one hour of youthful joy!  
Give back my fourteenth spring!  
I'd rather laugh, a bright haired boy,  
Than reign a grey-beard king.*

OLIVER WENDELL HOLMES.

*Stevenson's Dairy Farms  
Cumnock.*

Telephone: 3255-6

## FEBRUARY, 1952

Full Moon—11th.  
New Moon—25th.

<i>Sunday</i>	-	•	3	10	17	24
<i>Monday</i>	-	•	4	11	18	25
<i>Tuesday</i>	-	•	5	12	19	26
<i>Wednesday</i>	•		6	13	20	27
<i>Thursday</i>	-	•	7	14	21	28
<i>Friday</i>	-		1	8	15	22
<i>Saturday</i>	-		2	9	16	23



"PLUNKERS"—OCHILTREE.

*The little ones, unbutton'd glowing hot,  
 Playing our games, and on the very spot:  
 As happy as we once, to kneel and draw  
 The chalky ring, and knuckle down at taw.*

WILLIAM COWPER.

*Stevenson's  
 Dairy Farms  
 Cumnock*

Telephone: 8255-6

APRIL, 1952 Full Moon—10th.  
New Moon—26th.

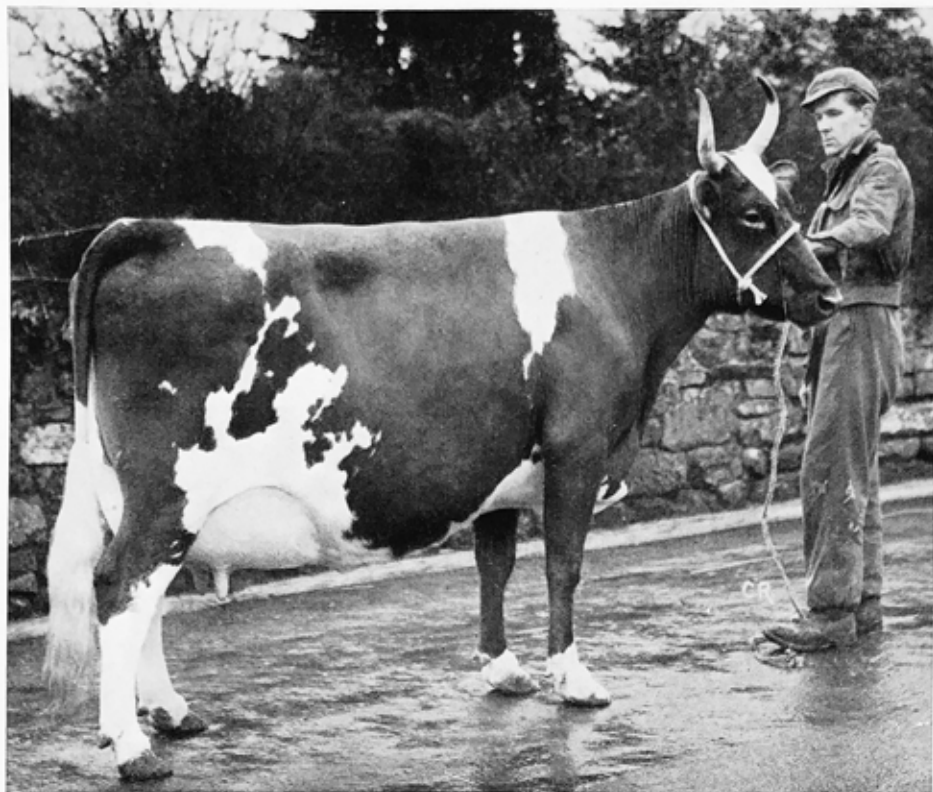
<i>Sunday</i>	-	•	6	13	20	27
<i>Monday</i>	-	•	7	14	21	28
<i>Tuesday</i>	-	1	8	15	22	29
<i>Wednesday</i>	-	2	9	16	23	30
<i>Thursday</i>	-	3	10	17	24	•
<i>Friday</i>	-	4	11	18	25	•
<i>Saturday</i>	-	5	12	19	26	•

# CHANGUE AND BANKEND

PEDIGREE AYRSHIRE HERDS

(Established at  
Change, 1867)

One of the Oldest "Ayrshire" Stocks



CHANGUE "CHOICE 5th"

## CHANGUE "CHOICE 5th" (36158)

Dam—Changue "Choice 4th" (73984);  
Sire—Logan Mains "Unamity" (41264).

### Milk Record—

Calved	
25/4/43,	682 gals at 4.55% b.f. in 35 weeks
	as a heifer.
14/4/44,	874 .. at 4.83% b.f. .. 36 ..
6/4/45,	965 .. at 4.41% b.f. .. 39 ..
20/3/46,	965 .. at 4.45% b.f. .. 41 ..
28/4/47,	10,570 lbs. at 4.52% b.f. .. 299 days
2/5/48,	10,486 .. at 4.59% b.f. .. 301 ..
10/7/49,	11,180 .. at 4.65% b.f. .. 310 ..

"Choice 5th" won the VETERAN'S TROPHY at AYR SHOW in April, 1948, and was also FIRST PRIZE Cow-in-milk at CATRINE SHOW in 1947.

She is the dam of CHANGUE "LIBERATOR" and CHANGUE "JUPITOR," two bulls presently being used in the herds.

## CHANGUE "CLOVER 3rd" (32461)

Dam—Changue "Choice 5th" (36158);  
Sire—Low Milton "Wanderer" (55348)

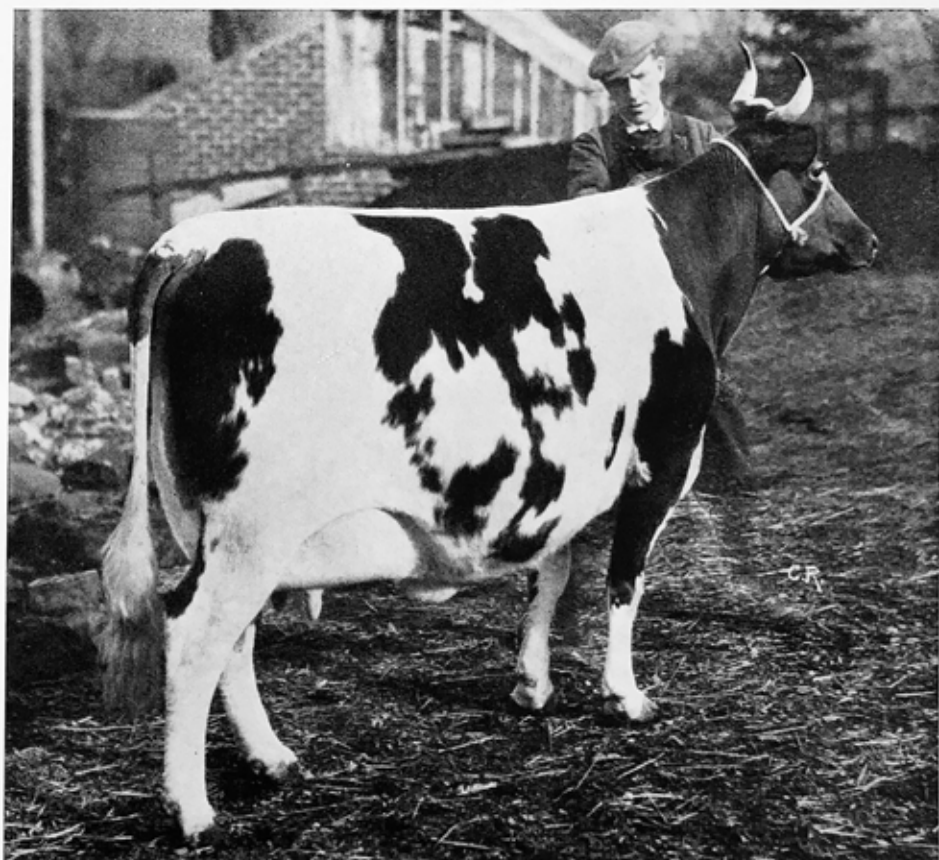
### Milk Record—

Calved	
27/12/48,	9,348 lbs. at 4.26% b.f. in 300 days
	as a heifer.
20/2/50,	10,299 .. at 4.23% b.f. .. 276 ..
	still milking 18½ lbs.

"Clover 3rd" was FIRST PRIZE Calving Heifer and CHAMPION of the YELD SECTION, MAYBOLE SHOW, October, 1948.

She is the dam of CHANGUE "MAIN-LINE," SECOND PRIZE SENIOR BULL at AYR, February (1950) SHOW AND SALE.

"CLOVER 3rd" is a full sister of "LIBERATOR" and a half sister of "JUPITOR."



CHANGUE "CLOVER 3rd"

A "CHOICE" LINE.



GLAISNOCK STREET, CUMNOCK, ON CARNIVAL DAY.

"Bank, whang, whang" goes the drum,  
 "tootle-te-tootle" the fife,  
 Oh, a day in the city square, there is no  
 such pleasure in life!

BROWNING.

## MAY, 1951

New Moon—6th.  
 Full Moon—21st.

Sunday	-	•	6	13	20	27
Monday	-	•	7	14	21	28
Tuesday	-	1	8	15	22	29
Wednesday	2	9	16	23	30	
Thursday	-	3	10	17	24	31
Friday	-	4	11	18	25	•
Saturday	-	5	12	19	26	•

Stevenson's Dairy Farms  
 Cumnock.

Telephone: 8255-6



ONE FOR "MAGPIE."

Three little maids from school are we,  
 Pert as a schoolgirl well can be,  
 Filled to the brim with girlish glee.

W. S. GILBERT.

*Stevenson's* Dairy Farms  
 Cumnoek.

Telephone: 8255-6

## MAY, 1952

Full Moon—9th.

New Moon—23rd.

<b>Sunday</b> -	•	4	11	18	25
<b>Monday</b> -	•	5	12	19	26
<b>Tuesday</b> -	•	6	13	20	27
<b>Wednesday</b> •		7	14	21	28
<b>Thursday</b> -	1	8	15	22	29
<b>Friday</b> -	2	9	16	23	30
<b>Saturday</b> -	3	10	17	24	31



THE RIVER AYR AT SORN CASTLE.

.....Towers, and battlements it sees,  
 Bosom'd high in tufted trees,

MILTON.

*Stevenson's Dairy Farms*  
 Cumnock.

Telephone: 3255-6

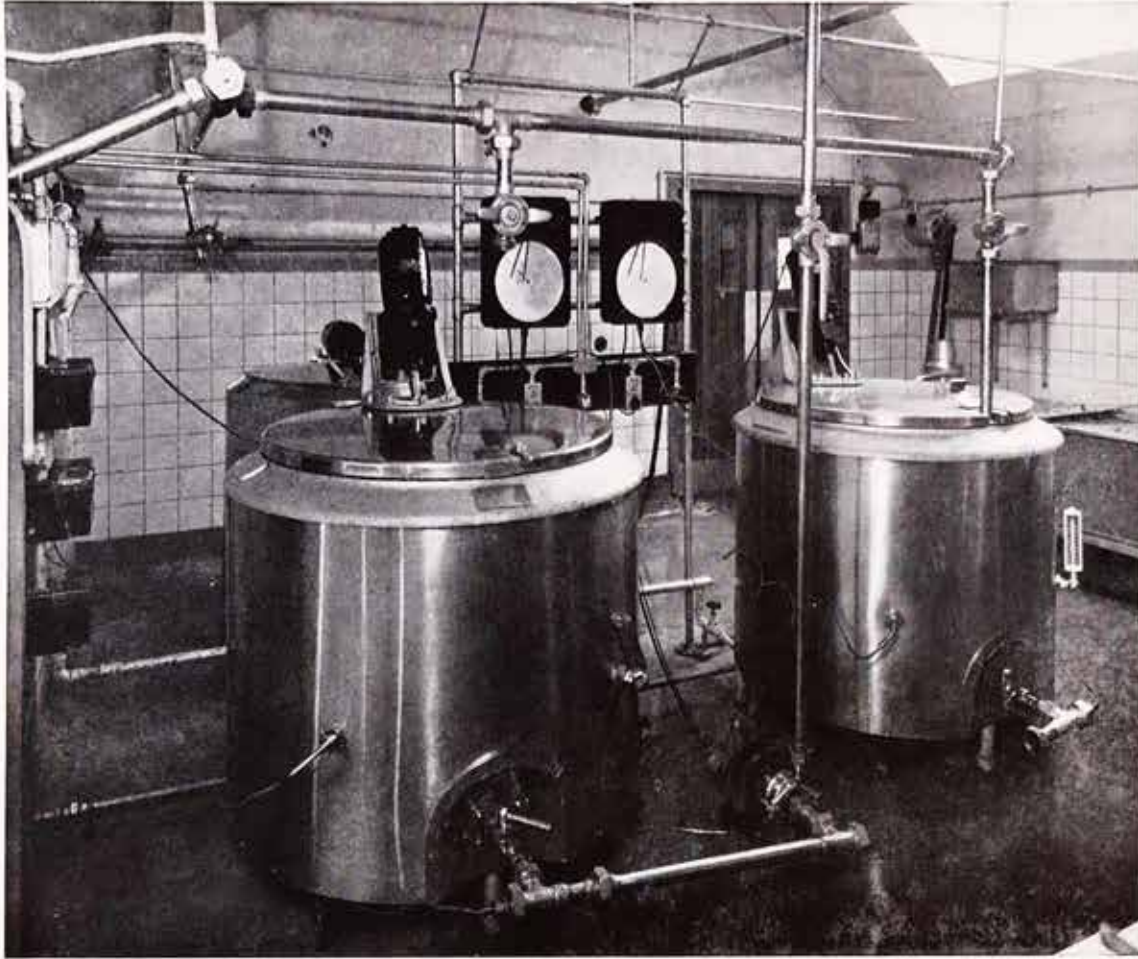
## JUNE, 1952

Full Moon—8th.  
 New Moon—22nd.

<i>Sunday</i>	-	1	8	15	22	29
<i>Monday</i>	-	2	9	16	23	30
<i>Tuesday</i>	-	3	10	17	24	•
<i>Wednesday</i>		4	11	18	25	•
<i>Thursday</i>	-	5	12	19	26	•
<i>Friday</i>	-	6	13	20	27	•
<i>Saturday</i>	-	7	14	21	28	•



## Additions to Plant and Premises.—Working Dairy, Changee.

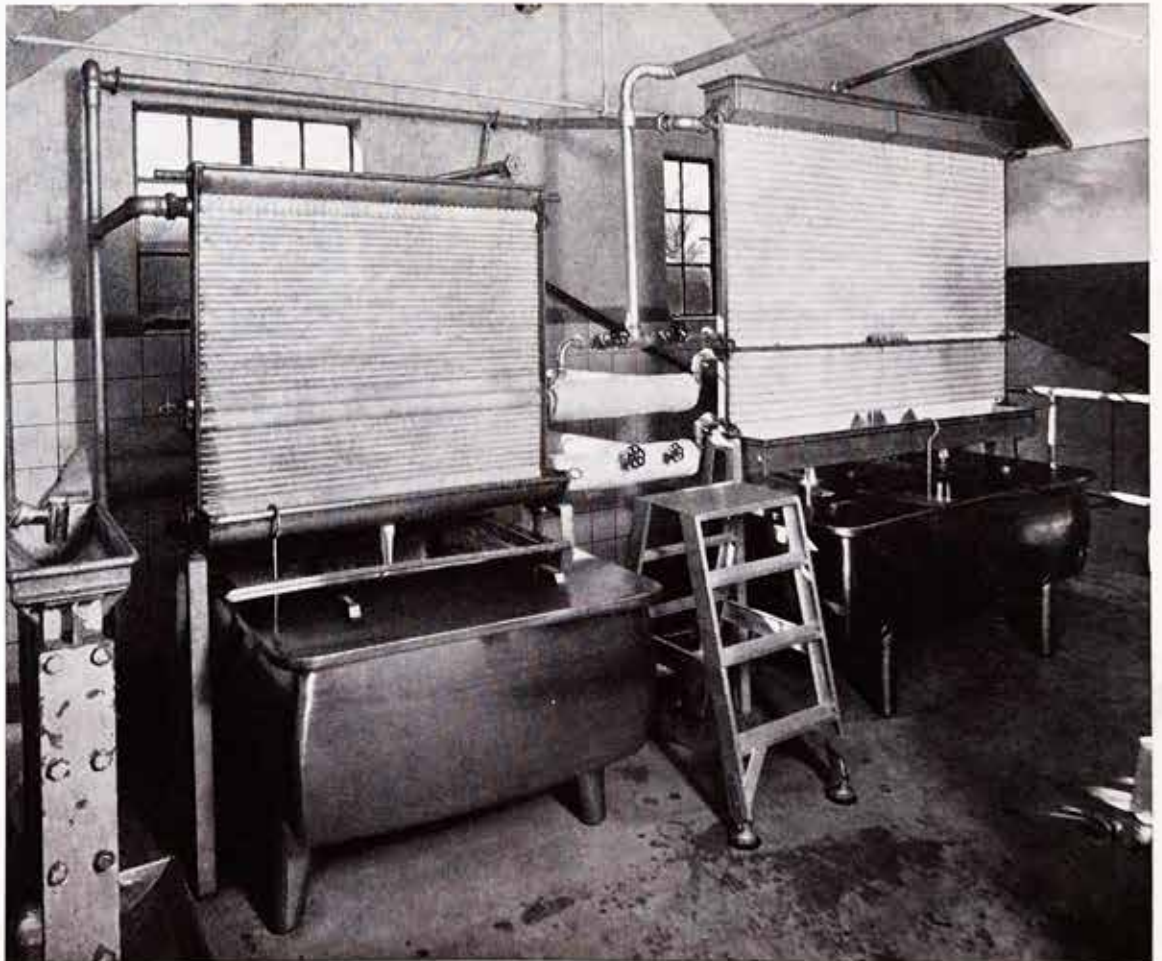


### *Pasteurisation*

*To comply with the Milk (Special Designations) (Scotland) Order, 1951, and in anticipation of further legislation, we have just completed an extensive programme of reconstruction at our dairy premises entailing several major additions to plant and equipment.*

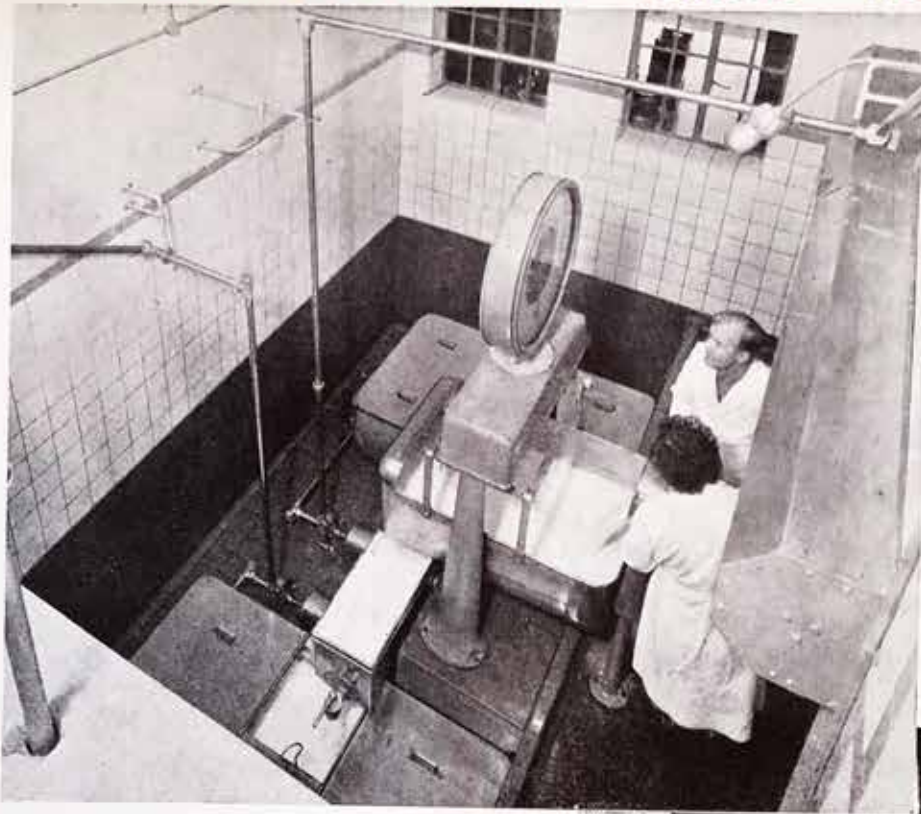
*The layout and construction of the buildings, together with the arrangement of the machinery, reflects all that is best in modern dairy technology*

*There are two principal grades of Milk designated in the new Order—Tuberculin Tested and Pasteurised. While the regulations do not specify separate processing plant for each grade, we have gone a stage further, providing duplicate equipment throughout. Two reception tanks, two refrigerators, and two bottling machines ensure that the two grades of Milk are kept entirely separate. Tuberculin Tested Milk is, of course, not heat-treated.*



### *Refrigeration*

# Additions to Plant and Premises.—Working Dairy, Changue.



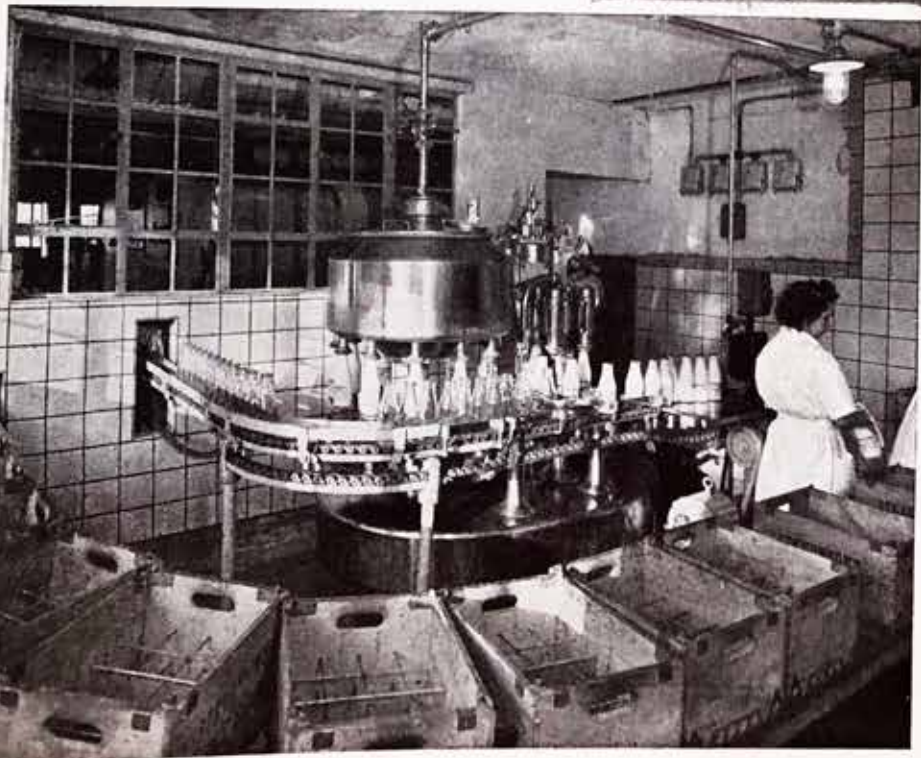
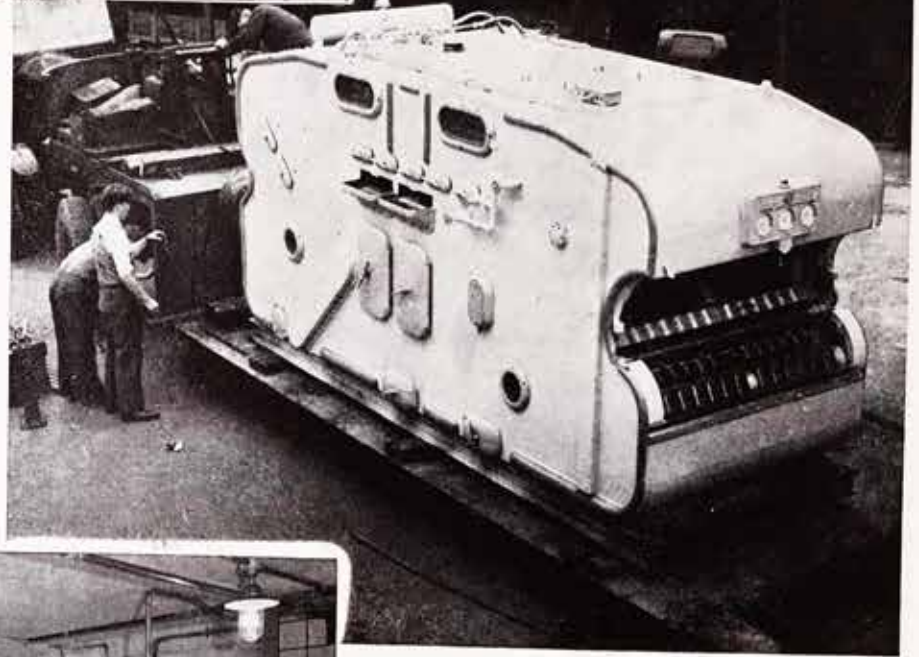
## Milk Reception

*Generous tiling in the processing section and stainless steel equipment throughout make for a high standard of hygiene. Moreover, the conveyance of the milk through the various stages from reception to arrival in the cold room in sealed bottles has been mechanised as far as possible, in order to increase efficiency and eliminate all risk of contamination.*

## Unloading New Bottle Washer

*Bottle washing, too, has been mechanised, the bottles being rinsed, washed, sterilised, cooled, and conveyed to the filler without ever being touched by hand.*

*As a further precaution in the protection of the pouring lip of the bottle, we are going over early in the year to the metal foil capping method for both grades of milk.*

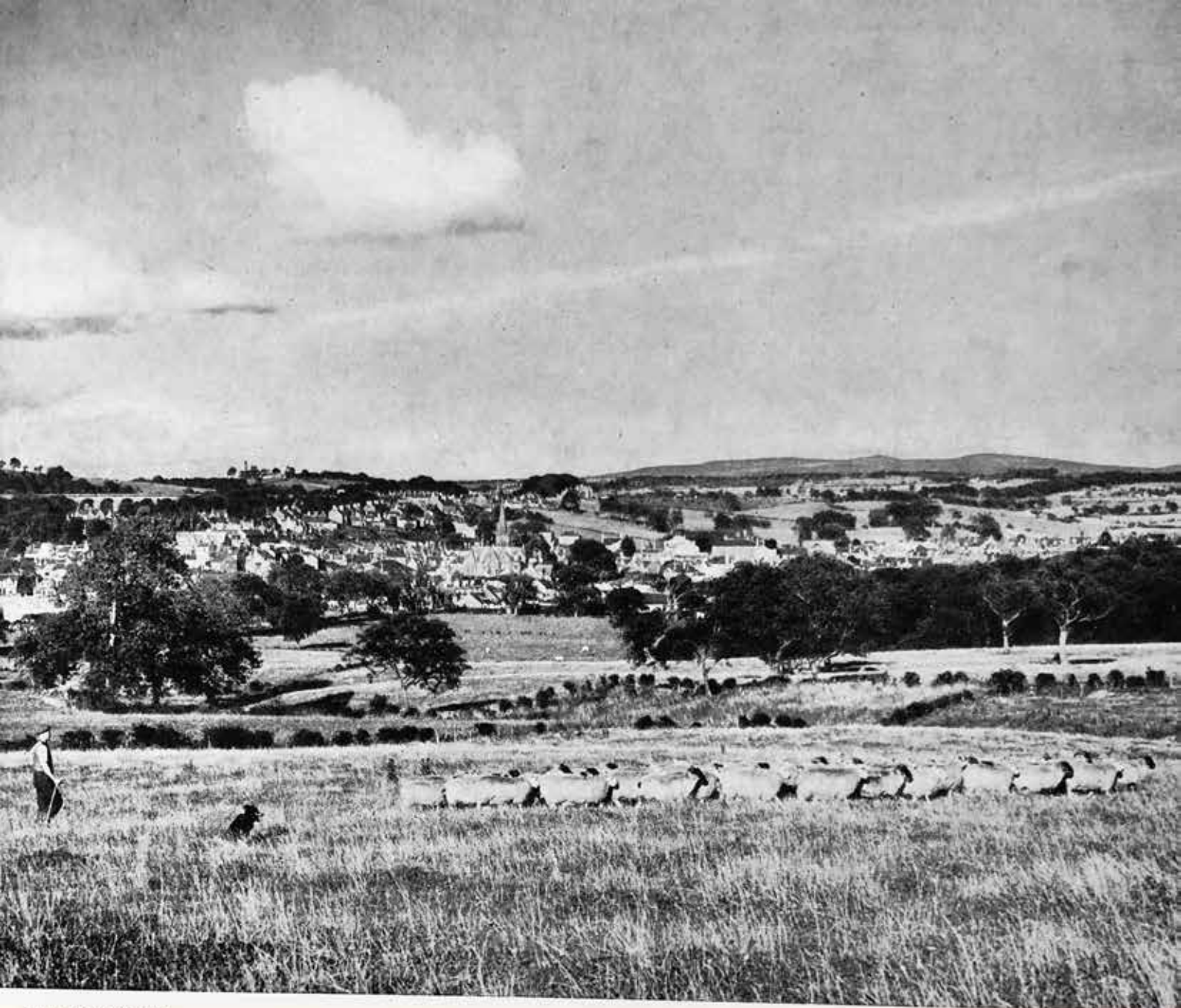


*On the operational side, the experience of a life-time in milk production is backed by a competent staff, thoroughly skilled in handling the technical equipment of a modern dairy, and trained to observe the essential principles of dairy hygiene.*

*A careful check is maintained on the quality of our supplies by regular submission of samples of incoming and finished milk for examination by the West of Scotland Agricultural College.*

*You have therefore the assurance that we are doing our best to provide a really high grade article; a safe milk of true flavour, rich in fat, and of good keeping quality.*

## Bottle Filling



OLD CUMNOCK.

*How happy is the shepherd's life,  
Far frae courts and free o' strife,  
Where the gimmers bleat and bae,  
And the lambkins answer mae.*

ANON.

*Stevenson's Dairy Farms  
Cumnock.*

Telephone: 3255-6

## JULY, 1952

Full Moon—7th.  
New Moon—21st.

<b>Sunday</b> -	•	6	13	20	27
<b>Monday</b> -	•	7	14	21	28
<b>Tuesday</b> -	1	8	15	22	29
<b>Wednesday</b>	2	9	16	23	30
<b>Thursday</b> -	3	10	17	24	31
<b>Friday</b> -	4	11	18	25	•
<b>Saturday</b> -	5	12	19	26	•



HARVESTING AT CHANGUE.

*The husky, rusty russel of the tassels of the corn,  
 And the raspin' of the tangled leaves as golden  
 as the morn;  
 The stubble in the furries—kindo' lonesome  
 like, but still  
 A-preachin' sermons to us of the barns they  
 growed to fill;*

JAMES WHITCOMB RILEY.

*Stevensons' Dairy Farms  
 Cumnoek.*

Telephone: 8255-6

AUGUST, 1952 *Full Moon—5th.  
 New Moon—20th.*

<b>Sunday-</b>	-	3	10	17	24	31
<b>Monday</b>	-	4	11	18	25	•
<b>Tuesday</b>	-	5	12	19	26	•
<b>Wednesday</b>		6	13	20	27	•
<b>Thursday</b>	-	7	14	21	28	•
<b>Friday-</b>		1	8	15	22	29
<b>Saturday</b>		2	9	16	23	30



IN GILMILNSCROFT WOODS.

*Where the hazel bank is steepest  
Where the shadow falls the deepest  
Where the clustering nuts fall free  
That's the way for Billy and me.*

JAMES HOGG.

SEPTEMBER, 1952 *Full Moon— 4th.  
New Moon—19th.*

<i>Sunday</i>	-	•	7	14	21	28
<i>Monday</i>	-	1	8	15	22	29
<i>Tuesday</i>	-	2	9	16	23	30
<i>Wednesday</i>	3	10	17	24	•	
<i>Thursday</i>	-	4	11	18	25	•
<i>Friday</i>	-	5	12	19	26	•
<i>Saturday</i>	-	6	13	20	27	•

*Stevenson's Dairy Farms  
Cumnock.*

Telephone 3255-6

# CHANGUE AND BANKEND

PEDIGREE AYRSHIRE HERDS

(Established at  
Change, 1867)

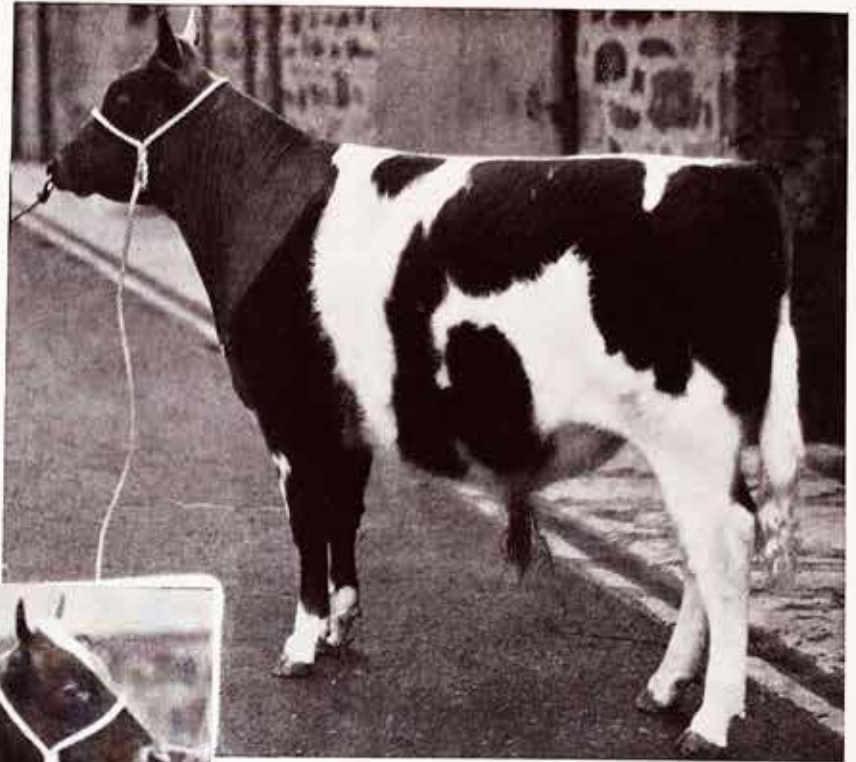
One of the Oldest "Ayrshire" Stocks

## BANKEND "PERFECTION" (100894).

Dam—Change "Miss Margaret 5th" (42575).  
Sire—Change "Liberator" (74531).

**SECOND PRIZE JUNIOR BULL**—Ayr Show and Sale, February, 1951. Purchased by Scottish Milk Marketing Board at 800 guineas for Southbar A.I. Centre.

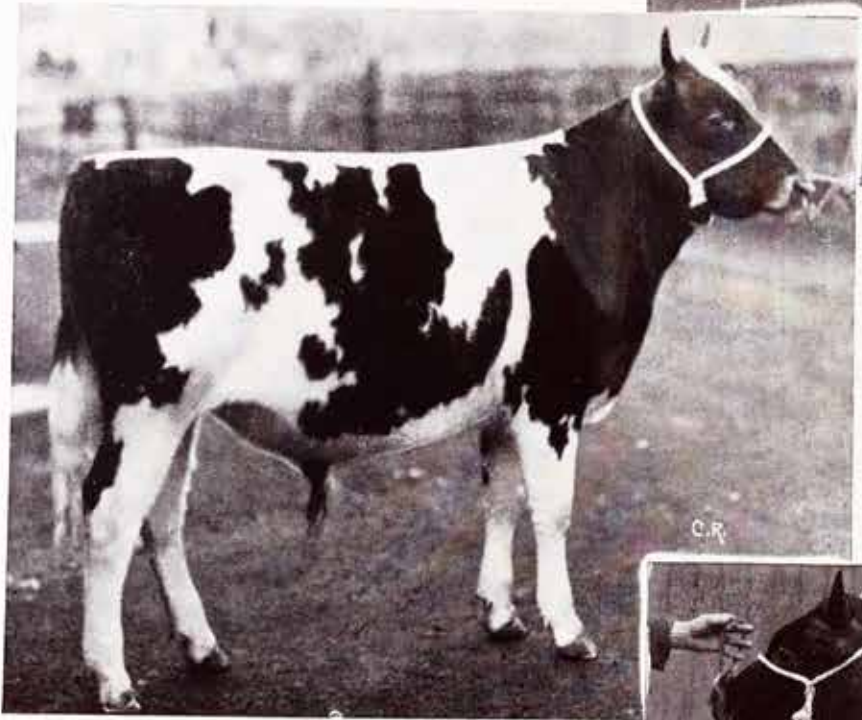
**SECOND PRIZE YEARLING BULL**—Ayr and Catrine Shows, April and May, 1951.



## BANKEND "PEARLSTONE" (100893).

Dam—Bankend "Untold" (87721).  
Sire—Change "Liberator" (74531).

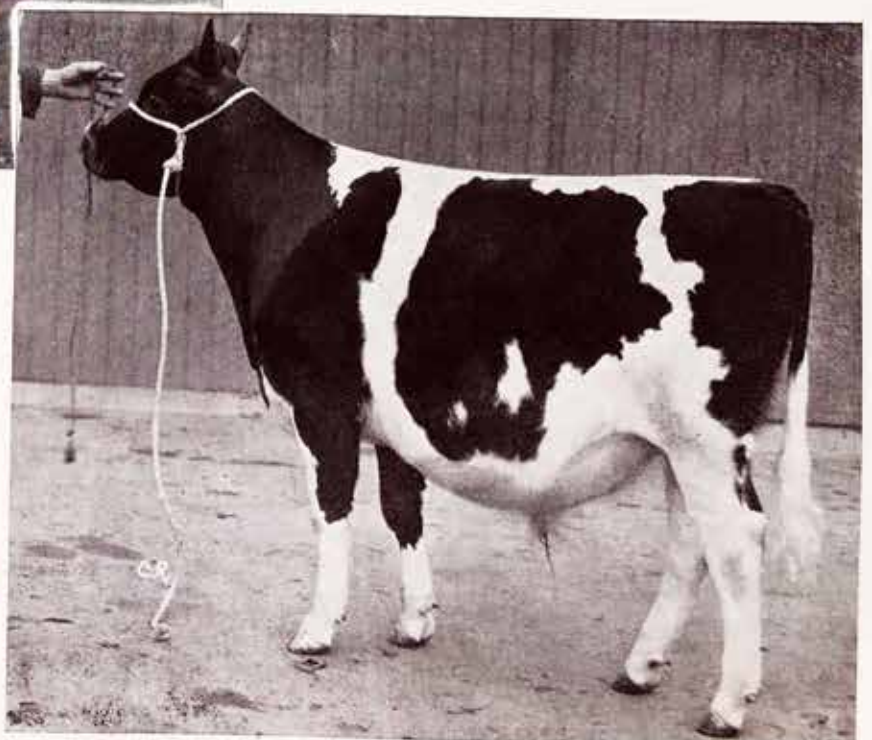
**THIRD PRIZE JUNIOR BULL**—Ayr Show and Sale, February, 1951. Purchased by Mr. Robert Howie, Drumfork, Helensburgh, at 1,400 guineas.



## CHANGUE "PROSPERITY" (100914).

Dam—Change "Pricilla" (85236).  
Sire—Change "Liberator" (74531).

**THIRD PRIZE JUNIOR BULL**—Ayr Show and Sale, November, 1951. Purchased by Messrs. F. Smith and Sons, Drayton Grange, Nuneaton, at 650 guineas.



Three young bulls SOLD IN 1951, all by our Senior Herd Sire CHANGUE "LIBERATOR".



THE POTATO HARVEST.

"The glory of the farmer is that, in the division of labours, it is his part to create. ....He stands close to nature; he obtains from the earth the bread and the meat."

EMERSON.

Stevenson's  
Dairy Farms  
Cumnoek.

Telephone: 3255-6

OCTOBER, 1952 Full Moon—3rd.  
New Moon—18th.

Sunday	-	•	5	12	19	26
Monday	-	•	6	13	20	27
Tuesday	-	•	7	14	21	28
Wednesday	1		8	15	22	29
Thursday	-	2	9	16	23	30
Friday	-	3	10	17	24	31
Saturday	-	4	11	18	25	•



YOUNG FARMERS.

*Why the boys should drive away  
 Little sweet maidens from the play  
 Or love to banter and fight so well  
 That's the thing I never could tell.*

JAMES HOGG.

*Stevenson's Dairy Farms  
 Cumnoek.  
 Telephone: 3255-6*

NOVEMBER, 1952 *Full Moon—1st.  
 New Moon—17th.*

<i>Sunday</i>	-	2	9	16	23	30
<i>Monday</i>	-	3	10	17	24	•
<i>Tuesday</i>	-	4	11	18	25	•
<i>Wednesday</i>		5	12	19	26	•
<i>Thursday</i>	-	6	13	20	27	•
<i>Friday</i>	-	7	14	21	28	•
<i>Saturday</i>		1	8	15	22	29





.....WHERE LUGAR FLOWS."

Good King Wenceslas looked out,  
 On the Feast of Stephen;  
 When the snow lay round about,  
 Deep and crisp and even.

NEALE.

*Stevenson's Dairy Farms*  
 CUMNOCK.

Telephone: 3255-6

DECEMBER, 1952		Full Moon—1st.	New Moon—17th.
<i>Sunday</i>	- •	7	14 21 28
<i>Monday</i>	- 1	8	15 22 29
<i>Tuesday</i>	- 2	9	16 23 30
<i>Wednesday</i>	3	10	17 24 31
<i>Thursday</i>	- 4	11	18 25 •
<i>Friday</i>	- - 5	12	19 26 •
<i>Saturday</i>	- 6	13	20 27 •



Partners  
 J. STEVENSON  
 J. M. STEVENSON  
 W. S. STEVENSON

**Stevenson's** Dairy Farms

Telephones

Cumnock - - 3255-6  
 Extension to Changue  
 Bankend, Cumnock 3101  
 Crofthead - - - 2241

Breeders of Pedigree  
 Attested Ayrshire Cattle

Farms:

CHANGUE - BANKEND - CROFHEAD AND NEWFIELD  
 WORKING DAIRY AT CHANGUE

44-45 The Square  
**CUMNOCK**  
 Ayrshire

January, 1952.

Dear Customer,

### Calendar, 1952.

*We again welcome this opportunity to thank you for your custom during the past year and to wish you the Compliments of the Season.*

*This is the fifteenth issue of our Calendar and we hope the selection of views and verse will again meet with general approval. By way of a change a touch of colour has been introduced, and we think the effect is brighter.*

*We receive many interesting and encouraging comments on our Calendar each year which are much appreciated. Last year we had rather an unusual request from the Editor of "The Family Herald," a popular Canadian weekly, for permission to reproduce the March and April pictures on the cover page of his Journal, a compliment we readily accepted.*

*From the same country we had an interesting letter from a Catrine native who emigrated when a young man. Referring to the view of Catrine, he writes, "That picture brings back a lot of pleasant memories to me. It shows the very place where I was born seventy-two years ago, and where I served my time as a blacksmith. It's the first picture of the auld Toon I have had the pleasure of seeing in all those years."*

*These and many other references add considerably to the enjoyment of producing each number. May we express the hope that the Calendar will continue to revive happy memories for Customers in the years to come.*

*Wishing you and yours all the best in 1952.*

*Yours sincerely,*

*J. J. & W. Stevenson*



Partners  
J. STEVENSON  
J. M. STEVENSON  
W. S. STEVENSON

Telephones  
Cumnock - - 3255-6  
Extension to Changue  
Bankend, Cumnock 3101  
Crofthead - - - 2241

## Breeders of Pedigree Attested Ayrshire Cattle

Farms:

CHANGUE - BANKEND - CROFTHEAD AND NEWFIELD  
WORKING DAIRY AT CHANGUE

44-45 The Square  
**CUMNOCK**  
Ayrshire

### JANUARY, 1952

Sunday	6	13	20	27	
Monday	7	14	21	28	
Tuesday	1	8	15	22	29
Wednesday	2	9	16	23	30
Thursday	3	10	17	24	31
Friday	4	11	18	25	.
Saturday	5	12	19	26	.

### FEBRUARY, 1952

Sunday	3	10	17	24	
Monday	4	11	18	25	
Tuesday	5	12	19	26	
Wednesday	6	13	20	27	
Thursday	7	14	21	28	
Friday	1	8	15	22	29
Saturday	2	9	16	23	.

### MARCH, 1952

Sunday	2	9	16	23	30	
Monday	3	10	17	24	31	
Tuesday	4	11	18	25	.	
Wednesday	5	12	19	26	.	
Thursday	6	13	20	27	.	
Friday	7	14	21	28	.	
Saturday	1	8	15	22	29	.

### APRIL, 1952

Sunday	6	13	20	27	
Monday	7	14	21	28	
Tuesday	1	8	15	22	29
Wednesday	2	9	16	23	30
Thursday	3	10	17	24	.
Friday	4	11	18	25	.
Saturday	5	12	19	26	.

### MAY, 1952

Sunday	4	11	18	25	
Monday	5	12	19	26	
Tuesday	6	13	20	27	
Wednesday	7	14	21	28	
Thursday	1	8	15	22	29
Friday	2	9	16	23	30
Saturday	3	10	17	24	31

### JUNE, 1952

Sunday	1	8	15	22	29
Monday	2	9	16	23	30
Tuesday	3	10	17	24	.
Wednesday	4	11	18	25	.
Thursday	5	12	19	26	.
Friday	6	13	20	27	.
Saturday	7	14	21	28	.

### JULY, 1952

Sunday	6	13	20	27	
Monday	7	14	21	28	
Tuesday	1	8	15	22	29
Wednesday	2	9	16	23	30
Thursday	3	10	17	24	31
Friday	4	11	18	25	.
Saturday	5	12	19	26	.

### AUGUST, 1952

Sunday	3	10	17	24	31	
Monday	4	11	18	25	.	
Tuesday	5	12	19	26	.	
Wednesday	6	13	20	27	.	
Thursday	7	14	21	28	.	
Friday	1	8	15	22	29	.
Saturday	2	9	16	23	30	.

### SEPTEMBER, 1952

Sunday	7	14	21	28	
Monday	1	8	15	22	29
Tuesday	2	9	16	23	30
Wednesday	3	10	17	24	.
Thursday	4	11	18	25	.
Friday	5	12	19	26	.
Saturday	6	13	20	27	.

### OCTOBER, 1952

Sunday	5	12	19	26	
Monday	6	13	20	27	
Tuesday	7	14	21	28	
Wednesday	1	8	15	22	29
Thursday	2	9	16	23	30
Friday	3	10	17	24	31
Saturday	4	11	18	25	.

### NOVEMBER, 1952

Sunday	2	9	16	23	30	
Monday	3	10	17	24	.	
Tuesday	4	11	18	25	.	
Wednesday	5	12	19	26	.	
Thursday	6	13	20	27	.	
Friday	7	14	21	28	.	
Saturday	1	8	15	22	29	.

### DECEMBER, 1952

Sunday	7	14	21	28	
Monday	1	8	15	22	29
Tuesday	2	9	16	23	30
Wednesday	3	10	17	24	31
Thursday	4	11	18	25	.
Friday	5	12	19	26	.
Saturday	6	13	20	27	.

This calendar is specially compiled and produced by  
Stevensons' Dairy Farms. Copyright of all pictures reserved.