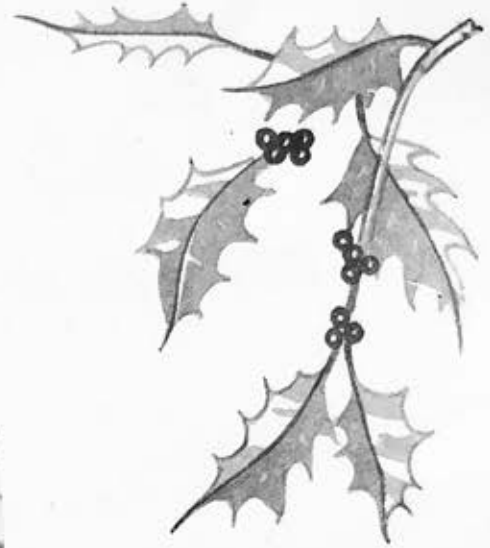


# A Guid New Year



## 1951

*It's no in titles nor in rank;  
It's no in wealth like Lon'on bank,  
To purchase peace and rest;  
It's no in makin' muckle, mair;  
It's no in books, it's no in lear,  
To make us truly blest;  
If happiness hae not her seat  
An' centre in the breast,  
We may be wise, or rich or great,  
But never can be blest;  
Nae treasures nor pleasures  
Could make us happy lang;  
The heart ay's the part ay  
That makes us right or wrang.*

BURNS.

*Stevenson's*  
*Dairy Farms*  
Cumnock.



NETTA STANDRING AND  
MAJOR

*Love me little, love me long,  
Is the burden of my song.*

ANON.

*Stevenson's*  
*Dairy Farms*  
Cumnock.

Telephone: 3255-6

JANUARY, 1951 New Moon—7th.  
Full Moon—23rd.

<i>Sunday</i>	-	•	7	14	21	28
<i>Monday</i>	-	1	8	15	22	29
<i>Tuesday</i>	-	2	9	16	23	30
<i>Wednesday</i>	3	10	17	24	31	
<i>Thursday</i>	-	4	11	18	25	•
<i>Friday</i>	-	5	12	19	26	•
<i>Saturday</i>	-	6	13	20	27	•



"AMONG THE BRAES O' BALLOCHMYLE."

*With careless step I onward stray'd,  
 My heart rejoic'd in nature's joy,  
 When, musing in a lonely glade,  
 A maiden fair I chanc'd to spy;  
 Her look was like the morning's eye,  
 Her air like nature's vernal smile;  
 Perfection whisper'd, passing by,  
 "Behold the lass o' Ballochmyle!"*  
 BURNS.

FEBRUARY, 1951 New Moon— 6th.  
Full Moon—21st.

Sunday	-	•	4	11	18	25
Monday	-	•	5	12	19	26
Tuesday	-	•	6	13	20	27
Wednesday	•		7	14	21	28
Thursday	-	1	8	15	22	•
Friday	-	2	9	16	23	•
Saturday	-	3	10	17	24	•

*Stevenson's Dairy Farms*  
 Cumnock

Telephone: 8255-6



MURRAY had a little lamb.

*Shout round me, let me hear thy shouts,  
thou happy Shepherd-boy.*

WORDSWORTH.

*Stevenson's Dairy Farms  
Cumnock.*

Telephone: 8255-6

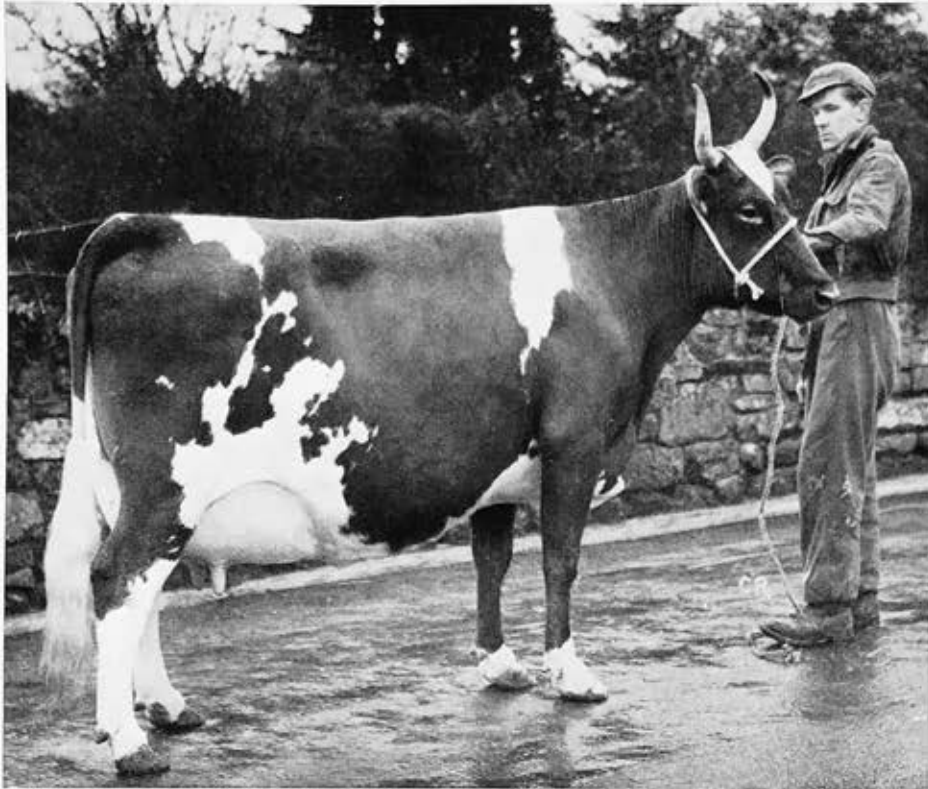
MARCH, 1951		<i>New Moon—7th.</i>		<i>Full Moon—23rd.</i>	
<i>Sunday</i>	- .	4	11	18	25
<i>Monday</i>	- .	5	12	19	26
<i>Tuesday</i>	- .	6	13	20	27
<i>Wednesday</i>	•	7	14	21	28
<i>Thursday</i>	- 1	8	15	22	29
<i>Friday</i>	- - 2	9	16	23	30
<i>Saturday</i>	- 3	10	17	24	31

# CHANGUE AND BANKEND

PEDIGREE AYRSHIRE HERDS

(Established at  
Change, 1867)

One of the Oldest "Ayrshire" Stocks



CHANGUE "CHOICE 5th"

## CHANGUE "CHOICE 5th" (36158)

Dam—Changue "Choice 4th" (73984);  
Sire—Logan Mains "Unamity" (41264).

### Milk Record—

Calved	
25/4/43,	682 gals at 4.55% b.f. in 35 weeks
	as a heifer.
14/4/44,	874 .. at 4.83% b.f. .. 36 ..
6/4/45,	965 .. at 4.41% b.f. .. 39 ..
20/3/46,	965 .. at 4.45% b.f. .. 41 ..
28/4/47,	10,570 lbs. at 4.52% b.f. .. 299 days
2/5/48,	10,486 .. at 4.59% b.f. .. 301 ..
10/7/49,	11,180 .. at 4.65% b.f. .. 310 ..

"Choice 5th" won the VETERAN'S TROPHY at AYR SHOW in April, 1948, and was also FIRST PRIZE Cow-in-milk at CATRINE SHOW in 1947.

She is the dam of CHANGUE "LIBERATOR" and CHANGUE "JUPITOR," two bulls presently being used in the herds.

## CHANGUE "CLOVER 3rd" (32461)

Dam—Changue "Choice 5th" (36158);  
Sire—Low Milton "Wanderer" (55348)

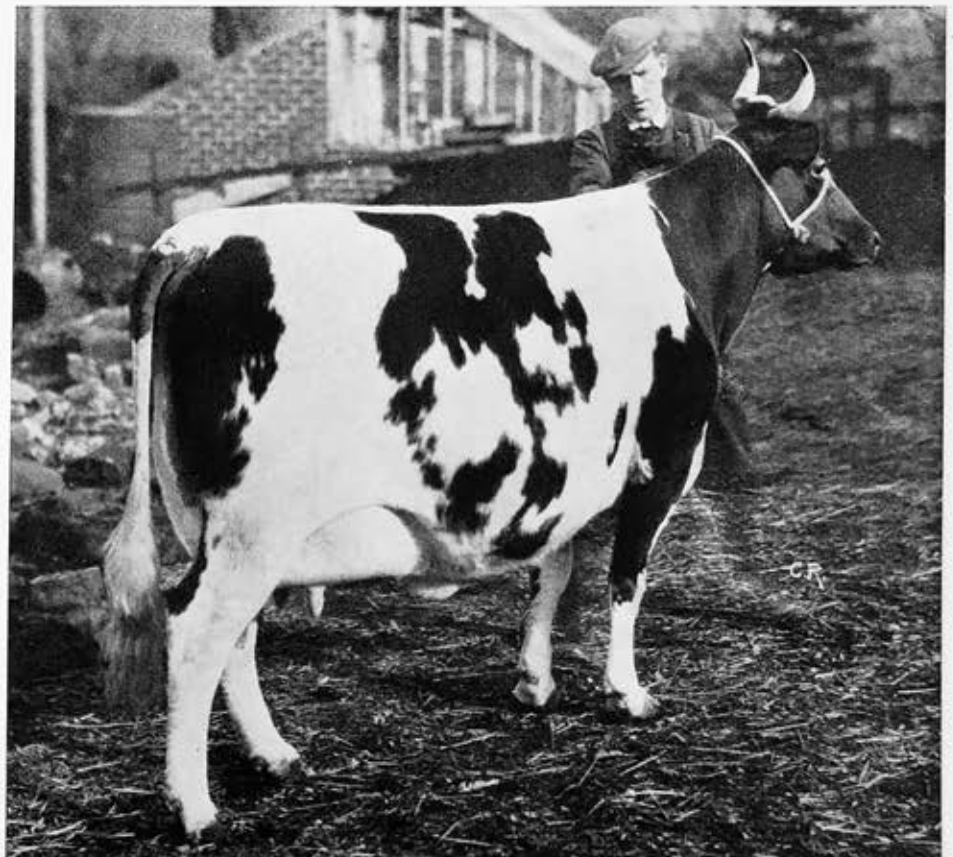
### Milk Record—

Calved	
27/12/48,	9,348 lbs. at 4.26% b.f. in 300 days
	as a heifer.
20/2/50,	10,299 .. at 4.23% b.f. .. 276 ..
	still milking 18½ lbs.

"Clover 3rd" was FIRST PRIZE Calving Heifer and CHAMPION of the YELD SECTION, MAYBOLE SHOW, October, 1948.

She is the dam of CHANGUE "MAIN-LINE," SECOND PRIZE SENIOR BULL at AYR, February (1950) SHOW AND SALE.

"CLOVER 3rd" is a full sister of "LIBERATOR" and a half sister of "JUPITOR."



CHANGUE "CLOVER 3rd"

A "CHOICE" LINE.



GLAISNOCK STREET, CUMNOCK, ON CARNIVAL DAY.

"Bank, whang, whang" goes the drum,  
 "tootle-te-tootle" the fife,  
 Oh, a day in the city square, there is no  
 such pleasure in life!

BROWNING.

## MAY, 1951

New Moon—6th.  
 Full Moon—21st.

Sunday	-	•	6	13	20	27
Monday	-	•	7	14	21	28
Tuesday	-	1	8	15	22	29
Wednesday	2	9	16	23	30	
Thursday	-	3	10	17	24	31
Friday	-	4	11	18	25	•
Saturday	-	5	12	19	26	•

Stevenson's  
 Dairy Farms  
 Cumnock.

Telephone: 8255-6



CARNIVAL WINNER

*Mary had a little lamb,  
 Its fleece was white as snow,  
 And everywhere that Mary went  
 The lamb was sure to go.*

—SARAH HALE

## MAY, 1950

<i>Sunday</i>	-	•	7	14	21	28
<i>Monday</i>	-	1	8	15	22	29
<i>Tuesday</i>	-	2	9	16	23	30
<i>Wednesday</i>	3	10	17	24	31	
<i>Thursday</i>	-	4	11	18	25	•
<i>Friday</i>	-	5	12	19	26	•
<i>Saturday</i>	-	6	13	20	27	•

*Stevenson's Dairy Farms*  
 Cumnock.

Telephone: 3255-6



WAR MEMORIAL, AUCHINLECK.

*God rest you, happy gentlemen,  
Who laid your good lives down,  
Who took the khaki and the gun  
Instead of cap and gown.  
God bring you to a fairer place  
Than even Oxford town.*

WINIFRED M. LETT.

*Stevenson's Dairy Farms  
Cumnock.*

Telephone: 3255-6

JUNE, 1951

New Moon—4th.

Full Moon—19th.

<i>Sunday</i>	-	•	3	10	17	24
<i>Monday</i>	-	•	4	11	18	25
<i>Tuesday</i>	-	•	5	12	19	26
<i>Wednesday</i>	•		6	13	20	27
<i>Thursday</i>	-	•	7	14	21	28
<i>Friday</i>	-		1	8	15	22
<i>Saturday</i>	-		2	9	16	23
					29	30



# Social Club Activities

Members of staff in the various sections of the business get together every month under the auspices of the Social Club, and the photographs on this page convey the fine spirit which prevails on those friendly occasions. The activities of the Club are organised and financed entirely by the members themselves.



**Five-a-Side Final.**

A popular summer outing for all ages is the Sports meeting at Changue  
**The Gir's "Get Ready."**

**Mystery Tour — Musical Interlude.**

This annual event never fails to attract a full turn out.



**Happy  
Family**

A recent addition to the Club Syllabus is the Christmas Party for the families of the staff.



NEWFIELD-  
Reseeded  
Hill Land.

*West of Scotland Agricultural College  
Students Outing to Changue Feb., 1950*



Inspecting the Farm Buildings.



A student puts a question.

Mr. Jas. Montgomerie demonstrating.



**Programme**

During the forenoon the party, under the leadership of Principal Kirkwood, were shown over the dairy premises, where they saw the cooling, bottling and washing plant in operation. Later the reseeded land at Newfield was inspected. After lunch, there was a demonstration on an Ayrshire cow, followed by stock-judging. Finally, the lay-out and construction of recent extensions to the farm buildings were explained by the College Advisory officer.





THE PUDDOCK BURN, CATRINE.

Where the pools are bright and deep,  
 Where the grey trout lies asleep,  
 Up the river and over the lea,  
 That's the way for Billy and me.

JAMES HOGG.

*Stevenson's Dairy Farms*  
 Cumnoek.

Telephone: 3255-6

JULY, 1951

New Moon—4th.  
 Full Moon—18th.

Sunday-	-	1	8	15	22	29
Monday	-	2	9	16	23	30
Tuesday	-	3	10	17	24	31
Wednesday		4	11	18	25	•
Thursday	-	5	12	19	26	•
Friday	-	6	13	20	27	•
Saturday	-	7	14	21	28	•



CATRINE—WHERE COTTON IS KING.

*All these trust to their hands . . .  
 Without these cannot a city be inhabited . . .  
 . . . they will maintain the fabric of the  
 world  
 And all their prayer is in the work of  
 their craft.*

ECCLESIASTICUS.

*Stevenson's Dairy Farms  
 Cumnock.*

Telephone: 3255 6

AUGUST, 1951		New Moon—2nd. Full Moon—17th.			
<i>Sunday</i>	- •	5	12	19	26
<i>Monday</i>	- •	6	13	20	27
<i>Tuesday</i>	- •	7	14	21	28
<i>Wednesday</i>	1	8	15	22	29
<i>Thursday</i>	- 2	9	16	23	30
<i>Friday</i>	- - 3	10	17	24	31
<i>Saturday</i>	- 4	11	18	25	•

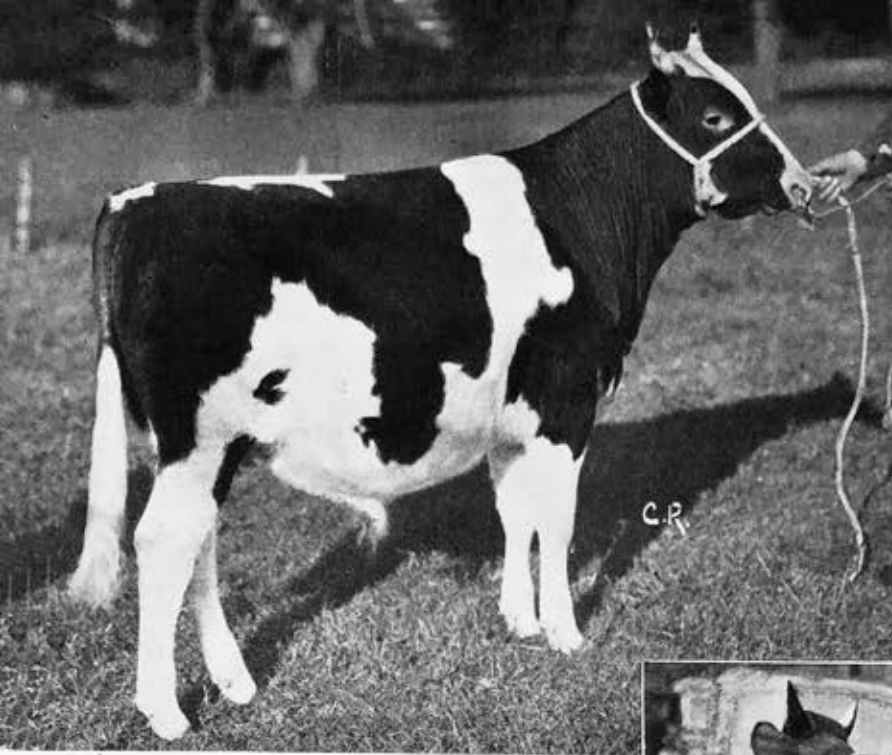


HARVESTING AT BANKEND—Cumnock in the Background.

*Neive about, an' neive about,  
The sower sows the grain;  
But sheave about, an' sheave about,  
He wins it back again.*  
W. D. COCKER.

*Stevenson's Dairy Farms*  
Cumnock.  
Telephone: 3255-6

SEPTEMBER, 1951		<i>New Moon—1st.</i>		<i>Full Moon—15th.</i>	
<i>Sunday</i>	- 2 9 16 23 30				
<i>Monday</i>	- 3 10 17 24				•
<i>Tuesday</i>	- 4 11 18 25				•
<i>Wednesday</i>	5 12 19 26				•
<i>Thursday</i>	- 6 13 20 27				•
<i>Friday</i>	- 7 14 21 28				•
<i>Saturday</i>	1 8 15 22 29				•



BANKEND "NEWSBOY"

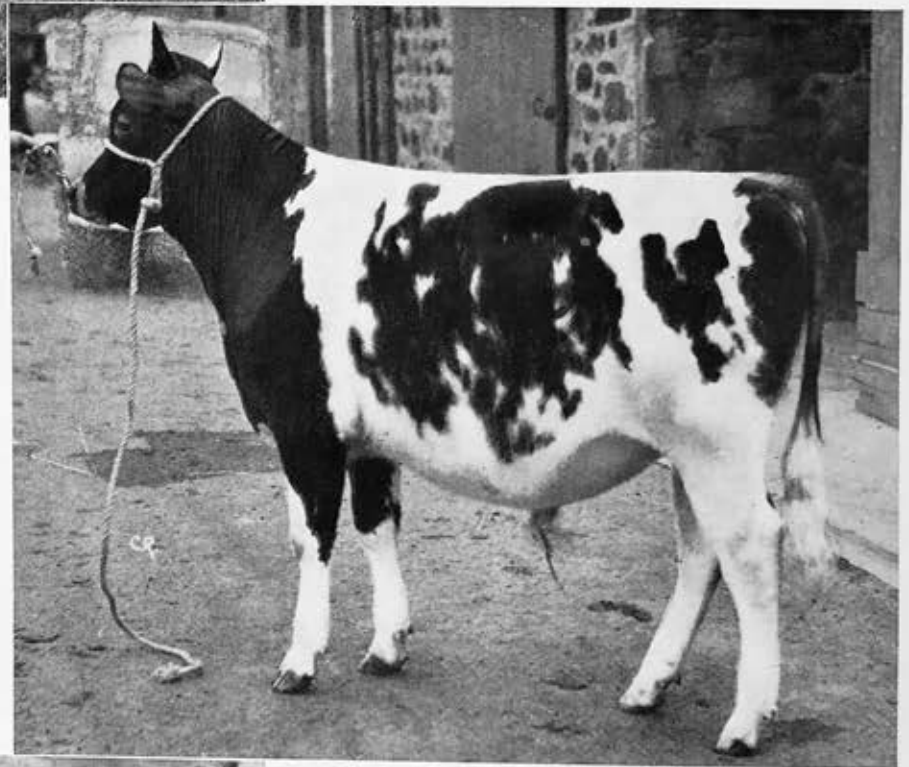
## SOLD FOR EXPORT

### BANKEND "NUTCRACKER"

Dam—Changue "Peach 3rd" (42580)  
Sire—Changue "Liberator" (74531)

This bull together with BANKEND "NOMINEE" was purchased at Ayr (Feb.) Sale by A. W. Montgomerie & Sons, Ltd., for export to HONG KONG. Another bull CHANGUE "NONESUCH" was purchased by the British Livestock Commission for export to CANADA.

During the year we also sold three heifers for export to KENYA COLONY.



BANKEND "NUTCRACKER"

## A LEVEL PRODUCER

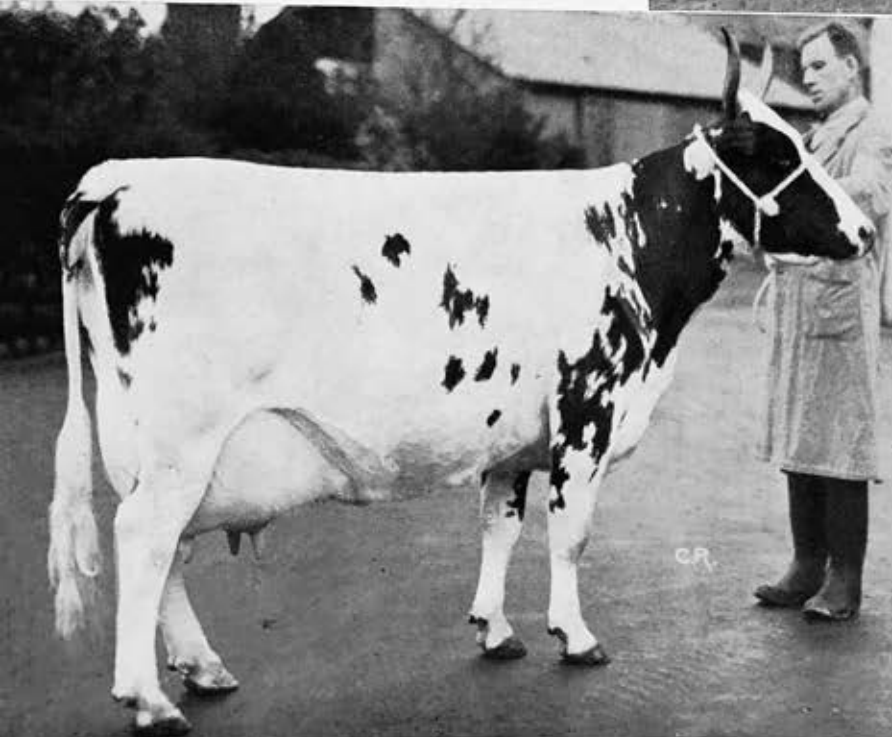
### CHANGUE "QUAVER 5th" (63629)

Dam—Changue "Quaver 3rd" (92843)  
Sire—Lessnessock "San Mario" (45248)

#### Milk Record:

Calved 20/4/45.	9,111 lbs.	at 4.27% b.f.	in 319 days	as a heifer
.. 17/5/46.	9,141 ..	at 4.27% b.f.	.. 287 ..	
.. 2/6/47.	11,152 ..	at 4.34% b.f.	.. 312 ..	
.. 21/6/48.	12,324 ..	at 4.20% b.f.	.. 299 ..	
.. 11/11/49.	16,213 ..	at 4.47% b.f.	.. 339 ..	

Note.—During her 1949/50 lactation "Quaver's" HIGHEST RECORDED YIELD was 59 lbs. Her record of 16,213 LBS. OF MILK AND 724 LBS. BUTTERFAT was spread evenly over the lactation. This VALUABLE BREED CHARACTERISTIC is present in many families in our herds, and it is our policy to establish it.



CHANGUE "QUAVER 5th"

Photograph taken at commencement of fifth lactation

## AYR AND LANARK BULL SALES (1950)

### BANKEND "NEWSBOY"

Dam—Bankend "Stately Maid" (58863)

Sire—Changue "Limousine" (79482)

FIRST PRIZE Senior Bull and RESERVE CHAMPION at Ayr (Nov.) Sale, CHANGUE bulls were 5th in the SENIOR CLASS and 7th in the JUNIOR CLASS at the same sale.

At AYR (Fed.) Sale a CHANGUE BULL was 2nd in the SENIOR CLASS and a BANKEND one 3rd in the JUNIOR CLASS.

At LANARK (Nov.) Sale a CHANGUE BULL was 2nd in the JUNIOR CLASS. This bull made the highest price of the sale.



RUMINATING—Near Bankend.

*Oh, the sweet contentment  
The countryman doth find.*

JOHN CHALKHILL.

*Stevenson's Dairy Farms  
Cumnoek.*

Telephone: 3255-6

OCTOBER, 1951

New Moon—1st.  
Full Moon—15th.  
New Moon—31st.

<i>Sunday</i>	-	•	7	14	21	28
<i>Monday</i>	-	1	8	15	22	29
<i>Tuesday</i>	-	2	9	16	23	30
<i>Wednesday</i>	-	3	10	17	24	31
<i>Thursday</i>	-	4	11	18	25	•
<i>Friday</i>	-	5	12	19	26	•
<i>Saturday</i>	-	6	13	20	27	•



ORCHARDTON, OCHILTREE.

*Poor little foal, of an oppresséd race!  
I love the languid patience of thy face.*  
S. COLERIDGE.

*Stevenson's Dairy Farms*  
Cumnock.  
Telephone: 3255-6

NOVEMBER, 1951		<i>Full Moon—13th.</i>		<i>New Moon—29th.</i>	
<i>Sunday</i>	- •	4	11	18	25
<i>Monday</i>	- •	5	12	19	26
<i>Tuesday</i>	- •	6	13	20	27
<i>Wednesday</i>	•	7	14	21	28
<i>Thursday</i>	- 1	8	15	22	29
<i>Friday</i>	- 2	9	16	23	30
<i>Saturday</i>	- 3	10	17	24	•





THE SOCIAL CLUB'S CHRISTMAS PARTY.

And he who gives a child a treat  
 Makes joy-bells ring in Heaven's street.  
 MASEFIELD.

DECEMBER, 1951 Full Moon—13th  
 New Moon—28th.

<i>Sunday</i>	-	2	9	16	23	30
<i>Monday</i>	-	3	10	17	24	31
<i>Tuesday</i>	-	4	11	18	25	•
<i>Wednesday</i>	-	5	12	19	26	•
<i>Thursday</i>	-	6	13	20	27	•
<i>Friday</i>	-	7	14	21	28	•
<i>Saturday</i>	1	8	15	22	29	•

*Stevenson's Dairy Farms*  
 Cumnoek.

Telephone: 3255-6



Partners  
 J. STEVENSON  
 J. M. STEVENSON  
 W. S. STEVENSON

**Stevenson's** Dairy Farms

Telephones

Cumnock - - 3255-6  
 Extension to Changue  
 Bankend, Cumnock 3101  
 Crofthead - - - 2241

Breeders of Pedigree  
 Attested Ayrshire Cattle

Farms:

CHANGUE - BANKEND - CROFHEAD AND NEWFIELD  
 WORKING DAIRY AT CHANGUE

44-45 The Square  
**CUMNOCK**  
 Ayrshire

January, 1951

Dear Customer,

### Calendar, 1951

*It is a real pleasure for us each year to select the pictures and quotations for the Calendar, and we always look forward to handing over our little gift when the time comes.*

*It isn't possible in one Calendar to have all the rounds represented, but we do try to give each district a turn. This year we include Catrine for the first time and we hope our friends there approve of the choice of subjects. We are particularly pleased on this occasion to devote two pages to the activities of the Social Club. The success of the Club during past years has given us the greatest satisfaction, and we are always ready to be of whatever assistance we can in fostering its wellbeing.*

*During the next year or so great changes will take place in the dairy trade. The new Milk Bill requires all milk OTHER THAN CERTIFIED AND T.T. GRADES to be pasteurised, and at present we are making alterations to our plant and premises in order to comply with the new regulations when they come into effect.*

*It has always been our aim to keep pace with the latest developments in dairying technique, and so be able to provide you with a first-class service. Our new premises when completed will uphold the reputation we have enjoyed in the past, and will be amongst the best of their kind in the country.*

*Milk is now much more plentiful, and it is expected that the manufacture of cream will be permitted early in the New Year. We are pleased to inform you we shall be in a position to supply both double and single cream immediately the Ministry of Food give their permission. We expect also to be able to meet the ever-growing demand for buttermilk.*

*In thanking you once more for your continued custom, may we assure you that we do our best at all times to serve you well.*

With compliments and best wishes.

Yours sincerely,

*J. J. & W. Stevenson*

# STEVENSONS' DAIRY FARMS

(J., J., & W. STEVENSON)

OFFICE, RESTAURANT, SHOP & BAKERY: 44-45 THE SQUARE,

## CUMNOCK

TELEPHONE 3255-6

**Producers and Distributors of Good Milk**

*Working Dairy at Changue*

**Bakers, Caterers and Restaurateurs**

**Breeders of Pedigreed Attested Ayrshire Cattle**

*Farms: Changue (Tele. 3255) Bankend (Tele. 3101)*

*Crofthead (Tele. 2241.) and Newfield.*

JANUARY, 1951		New Moon—7th	Full Moon—17th
Sunday	7 14 21 28		
Monday	1 8 15 22 29		
Tuesday	2 9 16 23 30		
Wednesday	3 10 17 24 31		
Thursday	4 11 18 25		
Friday	5 12 19 26		
Saturday	6 13 20 27		

FEBRUARY, 1951		New Moon—6th	Full Moon—21st
Sunday	4 11 18 25		
Monday	5 12 19 26		
Tuesday	6 13 20 27		
Wednesday	7 14 21 28		
Thursday	1 8 15 22		
Friday	2 9 16 23		
Saturday	3 10 17 24		

MARCH, 1951		New Moon—7th	Full Moon—19th
Sunday	4 11 18 25		
Monday	5 12 19 26		
Tuesday	6 13 20 27		
Wednesday	7 14 21 28		
Thursday	1 8 15 22 29		
Friday	2 9 16 23 30		
Saturday	3 10 17 24 31		

APRIL, 1951		New Moon—6th	Full Moon—21st
Sunday	1 8 15 22 29		
Monday	2 9 16 23 30		
Tuesday	3 10 17 24		
Wednesday	4 11 18 25		
Thursday	5 12 19 26		
Friday	6 13 20 27		
Saturday	7 14 21 28		

MAY, 1951		New Moon—6th	Full Moon—21st
Sunday	6 13 20 27		
Monday	7 14 21 28		
Tuesday	1 8 15 22 29		
Wednesday	2 9 16 23 30		
Thursday	3 10 17 24 31		
Friday	4 11 18 25		
Saturday	5 12 19 26		

JUNE, 1951		New Moon—6th	Full Moon—19th
Sunday	3 10 17 24		
Monday	4 11 18 25		
Tuesday	5 12 19 26		
Wednesday	6 13 20 27		
Thursday	7 14 21 28		
Friday	1 8 15 22 29		
Saturday	2 9 16 23 30		

JULY, 1951		New Moon—6th	Full Moon—18th
Sunday	1 8 15 22 29		
Monday	2 9 16 23 30		
Tuesday	3 10 17 24 31		
Wednesday	4 11 18 25		
Thursday	5 12 19 26		
Friday	6 13 20 27		
Saturday	7 14 21 28		

AUGUST, 1951		New Moon—7th	Full Moon—17th
Sunday	5 12 19 26		
Monday	6 13 20 27		
Tuesday	7 14 21 28		
Wednesday	1 8 15 22 29		
Thursday	2 9 16 23 30		
Friday	3 10 17 24 31		
Saturday	4 11 18 25		

SEPTEMBER, 1951		New Moon—7th	Full Moon—19th
Sunday	2 9 16 23 30		
Monday	3 10 17 24		
Tuesday	4 11 18 25		
Wednesday	5 12 19 26		
Thursday	6 13 20 27		
Friday	7 14 21 28		
Saturday	1 8 15 22 29		

OCTOBER, 1951		New Moon—13th	Full Moon—15th	New Moon—11th
Sunday	7 14 21 28			
Monday	1 8 15 22 29			
Tuesday	2 9 16 23 30			
Wednesday	3 10 17 24 31			
Thursday	4 11 18 25			
Friday	5 12 19 26			
Saturday	6 13 20 27			

NOVEMBER, 1951		Full Moon—13th	New Moon—20th
Sunday	4 11 18 25		
Monday	5 12 19 26		
Tuesday	6 13 20 27		
Wednesday	7 14 21 28		
Thursday	1 8 15 22 29		
Friday	2 9 16 23 30		
Saturday	3 10 17 24		

DECEMBER, 1951		Full Moon—13th	New Moon—20th
Sunday	2 9 16 23 30		
Monday	3 10 17 24 31		
Tuesday	4 11 18 25		
Wednesday	5 12 19 26		
Thursday	6 13 20 27		
Friday	7 14 21 28		
Saturday	1 8 15 22 29		

*This calendar is specially compiled and produced by  
Stevenson's Dairy Farms. Copyright of all pictures reserved.*