

With the Season's Greetings



Calendar 1950

*Here's a health tae ye a' your days,
Plenty o' meat an' plenty o' claes
Parritch an' a bane spune
An' anither tattie when ane's dune.*

Old Scots.

Stevenson's Dairy Farms
Cumnock.

Telephone 8255.



CRAIGDARROCH—NEW CUMNOCK

"————— in the country places
 Where the plain old men have rosy faces
 And the young fair maidens
 Quiet eyes:
 Where essential silence cheers and blesses
 And forever in the hill recesses
 Her more lovely music
 Broods and dies."

—R. L. STEVENSON

JANUARY, 1950

Sunday	-	1	8	15	22	29
Monday	-	2	9	16	23	30
Tuesday	-	3	10	17	24	31
Wednesday		4	11	18	25	•
Thursday	-	5	12	19	26	•
Friday	-	6	13	20	27	•
Saturday	-	7	14	21	28	•

Stevenson's
Dairy Farms
Cumnock.

Telephone: 3255-6



AYRSHIRE KEEPER

*I thocht I kent o' poachin' juist as muckle's
ither men,
But there is still a two-three things I doot
I dinna ken.*

—G. K. MENZIES.

FEBRUARY, 1950

<i>Sunday</i>	-	•	5	12	19	26	
<i>Monday</i>	-	•	6	13	20	27	
<i>Tuesday</i>	-	•	7	14	21	28	
<i>Wednesday</i>	1		8	15	22	•	
<i>Thursday</i>	-	2	9	16	23	•	
<i>Friday</i>	-	-	3	10	17	24	•
<i>Saturday</i>	-	4	11	18	25	•	

Stevenson's
Dairy Farms
Cumnock.

Telephone: 3255-6



COYLTON CRONIES

*Thou straggler into loving arms,
 Young climber-up of knees,
 When I forget thy thousand ways
 Then life and all shall cease.*

—MARY LAMB

*Stevenson's Dairy Farms
 Cumnoek.*

Telephone: 3255-6

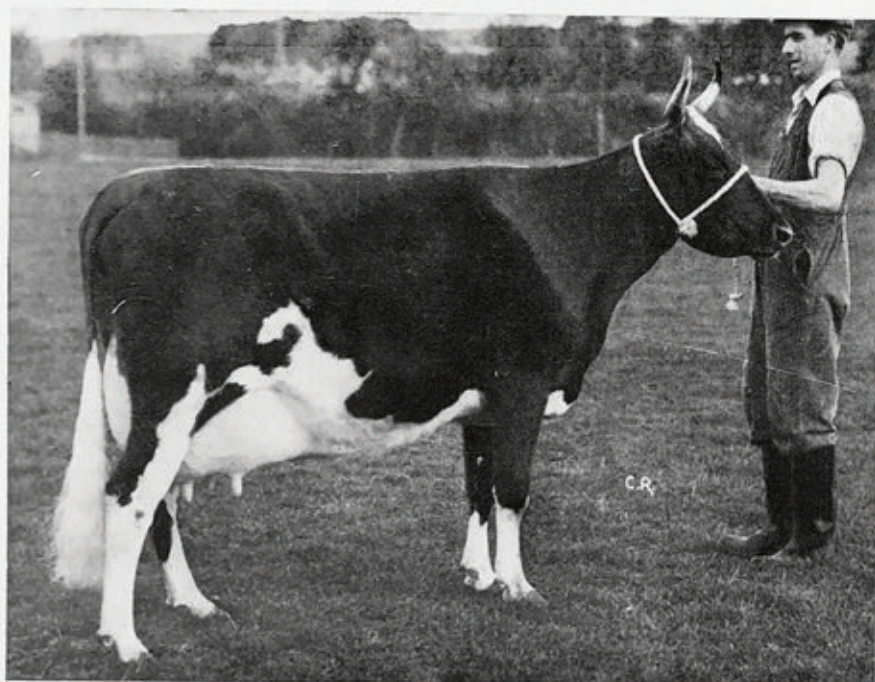
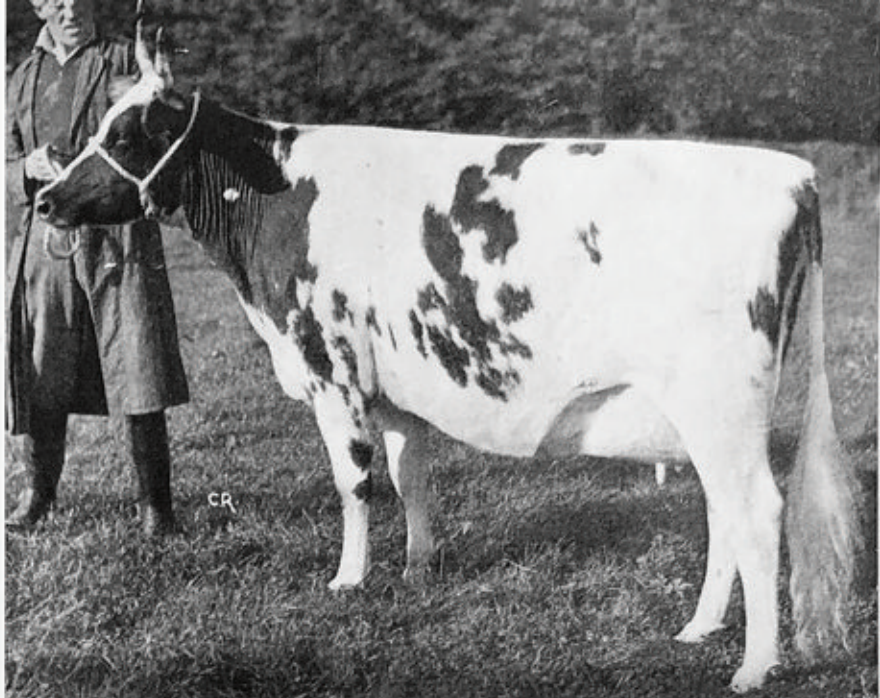
MARCH, 1950

<i>Sunday</i>	-	•	5	12	19	26
<i>Monday</i>	-	•	6	13	20	27
<i>Tuesday</i>	-	•	7	14	21	28
<i>Wednesday</i>	1		8	15	22	29
<i>Thursday</i>	-	2	9	16	23	30
<i>Friday</i>	-	3	10	17	24	31
<i>Saturday</i>	-	4	11	18	25	•

**A YOUNG MEMBER OF
THE "CHOICE" FAMILY**

CHANGUE "CISSIE 2nd" (58874)
Sire—Low Milton "Wanderer" (55348)
by—Harleyholm "Signet" (40717)
Dam—Changue "Choice 7th" (63618)
by—Lessnessock "San Mario" (45248)
Calved 1st September, 1949.

The Dam of this heifer was **SECOND** in the **INSPECTION CLASS** for Senior Cows and gained a **CERTIFICATE OF MERIT** in the Milking Trials at the **SCOTTISH DAIRY SHOW**, November, 1948.



A HIGH YIELDER—13219lbs. AS A HEIFER

BANKEND "UNTOLD" (87721)
Sire—Changue "Lucky Lad" (50442)
by—Cowgrove "Trademark" (43358)
Dam—Changue "May" (36166)
by—Whitehill "Unity" (42818)

Milk Record

Calved 14/11/46, 13219lbs. at 4.17% b.f. in 357 days as a heifer
.. 14/3/48, 12547lbs. at 4.25% b.f. in 299 days
.. 29/3/49, 10652lbs. at 4.17% b.f. in 250 days still milking 32lbs.

**A MEMBER OF THE "PANSY"
FAMILY**

CHANGUE "PANSY 5th" (42578)
Sire—Lessnessock "San Mario" (45248)
by—Auchenbrain "By Play" (42053)
Dam—Changue "Pansy" (44571)
by—Hobsland "Golden Tip" (27989)

Milk Record

Calved 1/4/45, 746gals at 4.14% b.f. in 42 weeks as a heifer
.. 15/3/46, 9314lbs. at 4.04% b.f. in 331 days
.. 9/4/47, 9808lbs. at 4.78% b.f. in 312 days
.. 17/7/48, 12050lbs. at 3.98% b.f. in 323 days

**QUALITY STOCK —
QUALITY MILK**





THE END OF A PERFECT DAY

The days that make us happy make us wise.

—MASEFIELD

Stevenson's
Dairy Farms
Cumnock.

Telephone: 3255-6

APRIL, 1950

<i>Sunday</i>	-	2	9	16	23	30
<i>Monday</i>	-	3	10	17	24	•
<i>Tuesday</i>	-	4	11	18	25	•
<i>Wednesday</i>		5	12	19	26	•
<i>Thursday</i>	-	6	13	20	27	•
<i>Friday</i>	-	7	14	21	28	•
<i>Saturday</i>		1	8	15	22	29



CARNIVAL WINNER

*Mary had a little lamb,
 Its fleece was white as snow,
 And everywhere that Mary went
 The lamb was sure to go.*

—SARAH HALE

MAY, 1950

Sunday-	-	•	7	14	21	28
Monday	-	1	8	15	22	29
Tuesday	-	2	9	16	23	30
Wednesday	3	10	17	24	31	
Thursday	-	4	11	18	25	•
Friday	-	5	12	19	26	•
Saturday	-	6	13	20	27	•

Stevenson's
 Dairy Farms
 Cumnoek.

Telephone: 3255-6



OCHILTREE LANDSCAPE

*When June is come, then all the day
I'll sit with my love in the scented hay,
And watch the sunshot palaces high
That the white clouds build in the breezy
sky.*

—ROBERT BRIDGES

Stevenson's
Dairy Farms
Cumnock.

Telephone: 3255-6

JUNE, 1950

Sunday -	- •	4	11	18	25
Monday	- •	5	12	19	26
Tuesday	- •	6	13	20	27
Wednesday	•	7	14	21	28
Thursday	- 1	8	15	22	29
Friday -	- 2	9	16	23	30
Saturday	- 3	10	17	24	•



AWARDED
CERTIFICATES
OF MERIT
FOR
CLEAN MILK



Partners
J. STEVENSON
J. M. STEVENSON
W. S. STEVENSON

Stevenson's Dairy Farms

Telephones

Cumnock - - 3255-6
Extension to Changue
Bankend, Cumnock 3101
Crofthead - - 2241

Breeders of Pedigree
Attested Ayrshire Cattle

Farms:

CHANGUE - BANKEND - CROFTHEAD AND NEWFIELD
WORKING DAIRY AT CHANGUE

44-45 The Square
CUMNOCK
Ayrshire

January, 1950.

Dear Customer,

Calendar, 1950.

How the years roll on; it is Calendar time once more, and here is your copy of our thirteenth production. It is similar to last year's edition which was so well received. The pictures have again been carefully chosen, and we hope you find our selection as interesting as formerly. If your district is not represented on this occasion, then better luck next time!

We are often asked why we produce such an elaborate Calendar, and whether we consider it is worth all the time and trouble. This is a difficult question to answer, but judging by the measure of acceptance with which each issue is met, and the fact that the Calendar finds a place of honour in so many homes, we believe the work of production is appreciated.

It is worth while for other reasons, the extent of our service is such that we cannot maintain personal contact with all customers, and it is our desire to avoid becoming a soul-less organisation. The Calendar provides a direct link between your home and our home, and it gives us an opportunity annually to thank you for your custom.

Wishing all a Bright and Happy New Year.

Yours sincerely,

J. J. & W. Stevenson



AN AYRSHIRE LASS.
Give us each day our daily bread.

Stevenson's

Dairy Farms

Cumnock

Telephone: 3255-6

*Tuberculin Tested Milk
is
Nature's Best Food
in its
Most Health-giving Form.*

AUGUST, 1949

Sunday	-	•	7	14	21	28
Monday	-	1	8	15	22	29
Tuesday	-	2	9	16	23	30
Wednesday	3	10	17	24	31	
Thursday	-	4	11	18	25	•
Friday	-	5	12	19	26	•
Saturday	-	6	13	20	27	•



GLENHEAD FARM

*Princes and lords may flourish or may fade
 A breath can make them, as a breath has
 made,
 But a bold peasantry, their Country's
 pride
 When once destroyed, can never be
 supplied.*

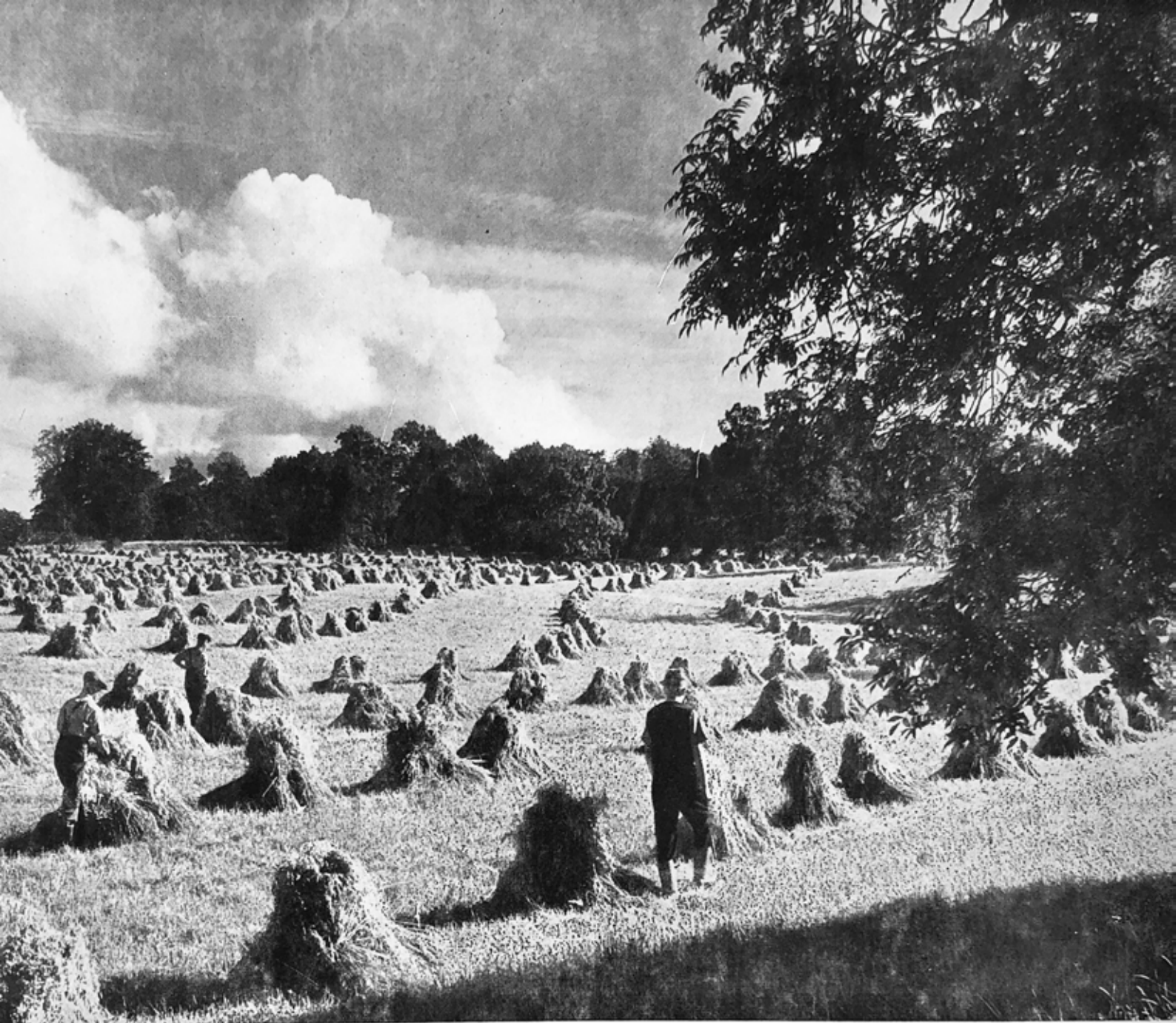
—GOLDSMITH

*Stevenson's Dairy Farms
 Cumnoek.*

Telephone: 3255-6

JULY, 1950

<i>Sunday</i>	-	2	9	16	23	30
<i>Monday</i>	-	3	10	17	24	31
<i>Tuesday</i>	-	4	11	18	25	•
<i>Wednesday</i>		5	12	19	26	•
<i>Thursday</i>	-	6	13	20	27	•
<i>Friday</i>	-	7	14	21	28	•
<i>Saturday</i>		1	8	15	22	29



HARVEST EVENING NEAR GARRALLAN

*Earth is here so kind, that just tickle her
with a hoe and she laughs with a harvest.*
—DOUGLAS JERROLD

*Stevenson's Dairy Farms
Cumnoek.*

Telephone: 3255-6

AUGUST, 1950

<i>Sunday</i>	-	•	6	13	20	27
<i>Monday</i>	-	•	7	14	21	28
<i>Tuesday</i>	-	1	8	15	22	29
<i>Wednesday</i>	-	2	9	16	23	30
<i>Thursday</i>	-	3	10	17	24	31
<i>Friday</i>	-	4	11	18	25	•
<i>Saturday</i>	-	5	12	19	26	•



IN THE PLAYPARK, SORN

*By sports like these are all their cares
beguil'd,*

The sports of children satisfy the child.

—GOLDSMITH

SEPTEMBER, 1950

<i>Sunday</i>	-	•	3	10	17	24	
<i>Monday</i>	-	•	4	11	18	25	
<i>Tuesday</i>	-	•	5	12	19	26	
<i>Wednesday</i>	•		6	13	20	27	
<i>Thursday</i>	-	•	7	14	21	28	
<i>Friday</i>	-	-	1	8	15	22	29
<i>Saturday</i>	-	2	9	16	23	30	

Stevenson's Dairy Farms
Cumnock.

Telephone: 3255-6

MOTHER AND SON

BANKEND "MARCELLUS" (VOL. 73)

Sire—Bargower "Silver Fleet" (67298)

by—Bargower "Silver Ace" (54771)

Dam—Low Milton "Whim" (69436)

by—Harleyholm "Signet" (40717)

5th in SENIOR CLASS and HIGHEST PRICED BULL at AYR SHOW & SALE, Nov., 1949.

Purchased by Messrs. Keir & Cawder Estates, Ltd.

Note:

The BANKEND HERD consigned the FIRST PRIZE JUNIOR BULL, in 1946, RESERVE CHAMPION in 1947, and the CHAMPION in 1948.



Some Prizes won by the Herds in 1949.

NEW CUMNOCK.—First, Cow-in-milk; First, Uncalved Cow; Second, Two-year-old Heifer; First, Pairs; First, Group of Four; Craig Challenge Cup for Confined Championship. Dalgig Trophy for Open Championship.

DALRYMPLE.—First, Four-year-old Cow-in-milk; Second, Aged Cow; Second, Bull.

MAYBOLE.—First, Heifer Stirk; Second, Pair Yield Heifers; Third, Cow-in-calf.

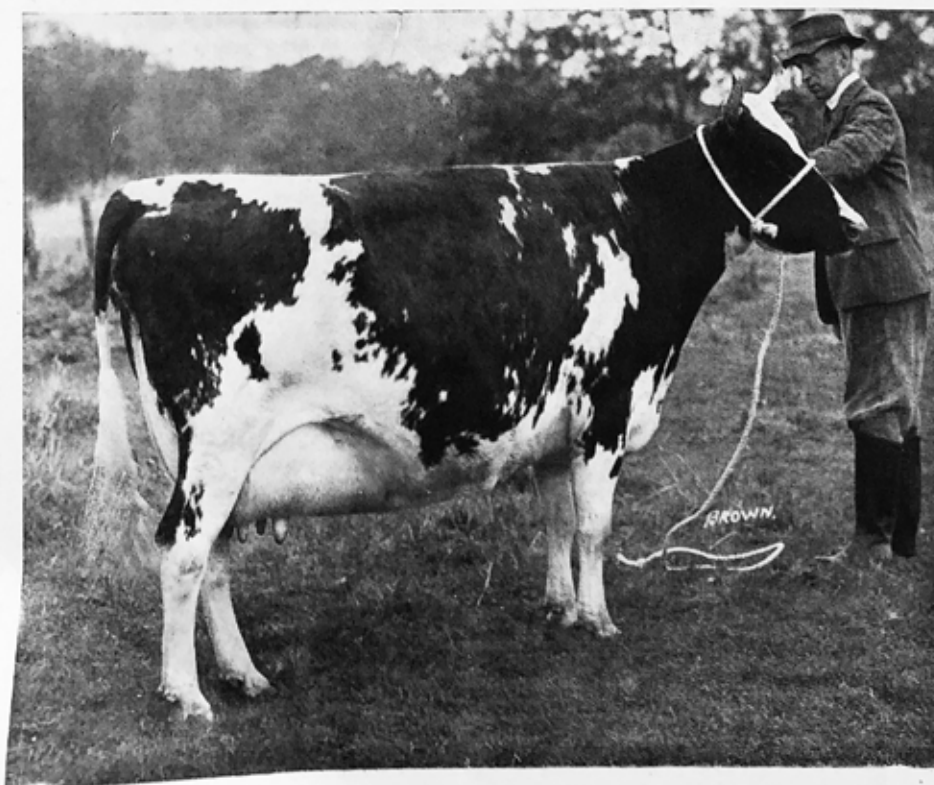
KILMARNOCK.—First, Pair Yield Heifers; Third, Cow-in-calf.

LONDON DAIRY SHOW.—Heifers—8th in Inspection Class (30 Competing) and Certificate of Merit.

LANARK SHOW & SALE.—FIRST, SENIOR BULL; SECOND, JUNIOR BULL.

Note:

The CHANGUE HERD consigned the FIRST AND THIRD PRIZE JUNIOR BULLS in 1946 and 1948 and the FIRST PRIZE JUNIOR BULL in 1947.



LOW MILTON "WHIM" (69436)

Sire—Harleyholm "Signet" (40717)

by—Auchenbrain "Clydesdale" (36752)

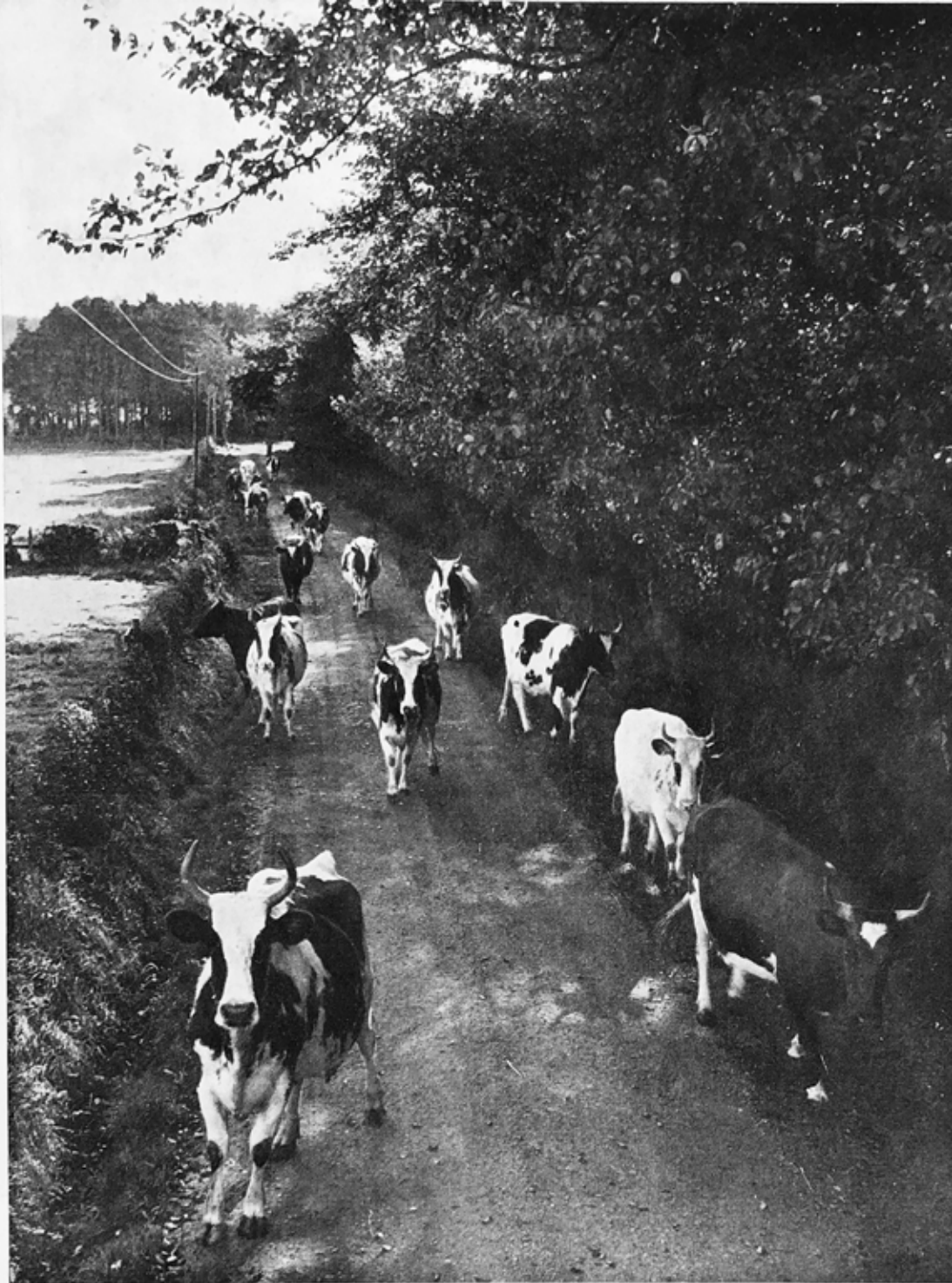
Dam—Low Milton "Queen of May" (94537)

by—Low Milton "Majestic" (36106)

Milk Record

Calved 10/6/46, 8605lbs. at 4.11% b.f. in 262 days as a heifer
.. 8/5/47, 10009lbs. at 4.11% b.f. in 359 days
.. 28/9/48, 11453lbs. at 4.23% b.f. in 292 days
.. 18/9/49.

"WHIM" is out of the same dam as BANKEND "KITCHENER" (69145), one of the SIREs AT PRESENT IN USE IN THE HERD.



AYRSHIRES IN A COUNTRY
LANE—CHANGUE

*Aye it's in the highways
The feck o' life maun gang
But aye it's frae the byways
Comes hame the happy sang.*
—WALTER WINGATE

OCTOBER, 1950

<i>Sunday</i>	-	1	8	15	22	29
<i>Monday</i>	-	2	9	16	23	30
<i>Tuesday</i>	-	3	10	17	24	31
<i>Wednesday</i>		4	11	18	25	•
<i>Thursday</i>	-	5	12	19	26	•
<i>Friday</i>	-	6	13	20	27	•
<i>Saturday</i>	-	7	14	21	28	•

Stevenson's Dairy Farms
Cumnock.

Telephone: 3255-6



GOOD MORNING — GOOD MILK

Life is an opportunity for service; not as little as we dare, but as much as we can.

—B. F. WESTCOTT

Stevenson's Dairy Farms
Cumnock.

Telephone: 3255-6

NOVEMBER, 1950

Sunday	-	•	5	12	19	26
Monday	-	•	6	13	20	27
Tuesday	-	•	7	14	21	28
Wednesday	1		8	15	22	29
Thursday	-	2	9	16	23	30
Friday	-	3	10	17	24	•
Saturday	-	4	11	18	25	•



FROSTY MORNING—NEAR TRABBOCH.

*That time of year that may'st in me behold
 When none, or few, or yellow leaves do
 hang
 Upon those boughs that shake against the
 cold —
 Bare ruined choirs where late the sweet
 birds sang.*

—SHAKESPEARE

*Stevenson's Dairy Farms
 Cumnock.*

Telephone: 3255-6

DECEMBER, 1950

Sunday -	3	10	17	24	31
Monday -	4	11	18	25	•
Tuesday -	5	12	19	26	•
Wednesday	6	13	20	27	•
Thursday -	7	14	21	28	•
Friday -	1	8	15	22	29
Saturday	2	9	16	23	30

STEVENSONS' DAIRY FARMS

(J., J., & W. STEVENSON)

OFFICE, RESTAURANT, SHOP & BAKERY: 44-45 THE SQUARE,

CUMNOCK

TELEPHONE 3255-6

Producers and Distributors of Good Milk

Working Dairy at Changue

Breeders of Pedigreed Attested Ayrshire Cattle

Bakers, Caterers and Restaurateurs

Farms: Changue (Tele. 3255) Bankend (Tele. 3101)

Crofthead (Tele. 2241.) and Newfield.

JANUARY, 1950	
Sunday	1 8 15 22 29
Monday	2 9 16 23 30
Tuesday	3 10 17 24 31
Wednesday	4 11 18 25 .
Thursday	5 12 19 26 .
Friday	6 13 20 27 .
Saturday	7 14 21 28 .

MAY, 1950	
Sunday	. 7 14 21 28
Monday	1 8 15 22 29
Tuesday	2 9 16 23 30
Wednesday	3 10 17 24 31
Thursday	4 11 18 25 .
Friday	5 12 19 26 .
Saturday	6 13 20 27 .

SEPTEMBER, 1950	
Sunday	. 3 10 17 24
Monday	. 4 11 18 25
Tuesday	. 5 12 19 26
Wednesday	. 6 13 20 27
Thursday	. 7 14 21 28
Friday	1 8 15 22 29
Saturday	2 9 16 23 30

FEBRUARY, 1950	
Sunday	. 5 12 19 26
Monday	. 6 13 20 27
Tuesday	. 7 14 21 28
Wednesday	1 8 15 22 .
Thursday	2 9 16 23 .
Friday	3 10 17 24 .
Saturday	4 11 18 25 .

JUNE, 1950	
Sunday	. 4 11 18 25
Monday	. 5 12 19 26
Tuesday	. 6 13 20 27
Wednesday	. 7 14 21 28
Thursday	1 8 15 22 29
Friday	2 9 16 23 30
Saturday	3 10 17 24 .

OCTOBER, 1950	
Sunday	1 8 15 22 29
Monday	2 9 16 23 30
Tuesday	3 10 17 24 31
Wednesday	4 11 18 25 .
Thursday	5 12 19 26 .
Friday	6 13 20 27 .
Saturday	7 14 21 28 .

MARCH, 1950	
Sunday	. 5 12 19 26
Monday	. 6 13 20 27
Tuesday	. 7 14 21 28
Wednesday	1 8 15 22 29
Thursday	2 9 16 23 30
Friday	3 10 17 24 31
Saturday	4 11 18 25 .

JULY, 1950	
Sunday	2 9 16 23 30
Monday	3 10 17 24 31
Tuesday	4 11 18 25 .
Wednesday	5 12 19 26 .
Thursday	6 13 20 27 .
Friday	7 14 21 28 .
Saturday	1 8 15 22 29 .

NOVEMBER, 1950	
Sunday	. 5 12 19 26
Monday	. 6 13 20 27
Tuesday	. 7 14 21 28
Wednesday	1 8 15 22 29
Thursday	2 9 16 23 30
Friday	3 10 17 24 .
Saturday	4 11 18 25 .

APRIL, 1950	
Sunday	2 9 16 23 30
Monday	3 10 17 24 .
Tuesday	4 11 18 25 .
Wednesday	5 12 19 26 .
Thursday	6 13 20 27 .
Friday	7 14 21 28 .
Saturday	1 8 15 22 29 .

AUGUST, 1950	
Sunday	. 6 13 20 27
Monday	. 7 14 21 28
Tuesday	1 8 15 22 29
Wednesday	2 9 16 23 30
Thursday	3 10 17 24 31
Friday	4 11 18 25 .
Saturday	5 12 19 26 .

DECEMBER, 1950	
Sunday	3 10 17 24 31
Monday	4 11 18 25 .
Tuesday	5 12 19 26 .
Wednesday	6 13 20 27 .
Thursday	7 14 21 28 .
Friday	1 8 15 22 29 .
Saturday	2 9 16 23 30 .

*This calendar is specially compiled and produced by
Stevensons Dairy Farms. Copyright of all pictures reserved.*