



POOSIE NANSIE'S, MAUCLINE.

*Ae night at e'en a merry core  
 O' randle, gangrel bodies,  
 In Poosie Nansie's held the splore,  
 To drink their orra duddies,  
 —BURNS.*

**Stevenson's**  
 Dairy Farms  
**Cumnock**

Telephone: 3255.6

*Awarded Certificates of Merit  
 for the  
 Production of Clean Milk  
 by the  
 West of Scotland Agricultural  
 College.*

<i>JANUARY, 1949</i>						
<b>Sunday</b>	-	•	<b>2</b>	<b>9</b>	<b>16</b>	<b>23 30</b>
<b>Monday</b>	-	•	<b>3</b>	<b>10</b>	<b>17</b>	<b>24 31</b>
<b>Tuesday</b>	-	•	<b>4</b>	<b>11</b>	<b>18</b>	<b>25 •</b>
<b>Wednesday</b>	•		<b>5</b>	<b>12</b>	<b>19</b>	<b>26 •</b>
<b>Thursday</b>	-	•	<b>6</b>	<b>13</b>	<b>20</b>	<b>27 •</b>
<b>Friday</b>	-	•	<b>7</b>	<b>14</b>	<b>21</b>	<b>28 •</b>
<b>Saturday</b>	-	<b>1</b>	<b>8</b>	<b>15</b>	<b>22</b>	<b>29 •</b>



ROBIN.

*The world is so full of a number of things,  
I'm sure we should all be as happy as kings.*

—R. L. STEVENSON.

Stevenson's  
Dairy Farms  
Cumnock

Telephone: 3255.6

*The Source of Your Milk Supply  
is of  
Vital Importance  
to the  
Health of the Household.*

*FEBRUARY, 1949*

<b>Sunday</b>	-	•	<b>6</b>	<b>13</b>	<b>20</b>	<b>27</b>
<b>Monday</b>	-	•	<b>7</b>	<b>14</b>	<b>21</b>	<b>28</b>
<b>Tuesday</b>	-	1	<b>8</b>	<b>15</b>	<b>22</b>	•
<b>Wednesday</b>	2	<b>9</b>	<b>16</b>	<b>23</b>	•	•
<b>Thursday</b>	-	3	<b>10</b>	<b>17</b>	<b>24</b>	•
<b>Friday</b>	-	4	<b>11</b>	<b>18</b>	<b>25</b>	•
<b>Saturday</b>	-	5	<b>12</b>	<b>19</b>	<b>26</b>	•



ROSE BURN, CUMNOCK.

*Straight mine eye hath caught new pleasure,  
While the landscape round it measures,  
Russet lawns and fallows gray,  
Where the nibbling flocks do stray.*  
—MILTON.

Stevenson's  
Dairy Farms  
Cumnock

Telephone: 3255-6

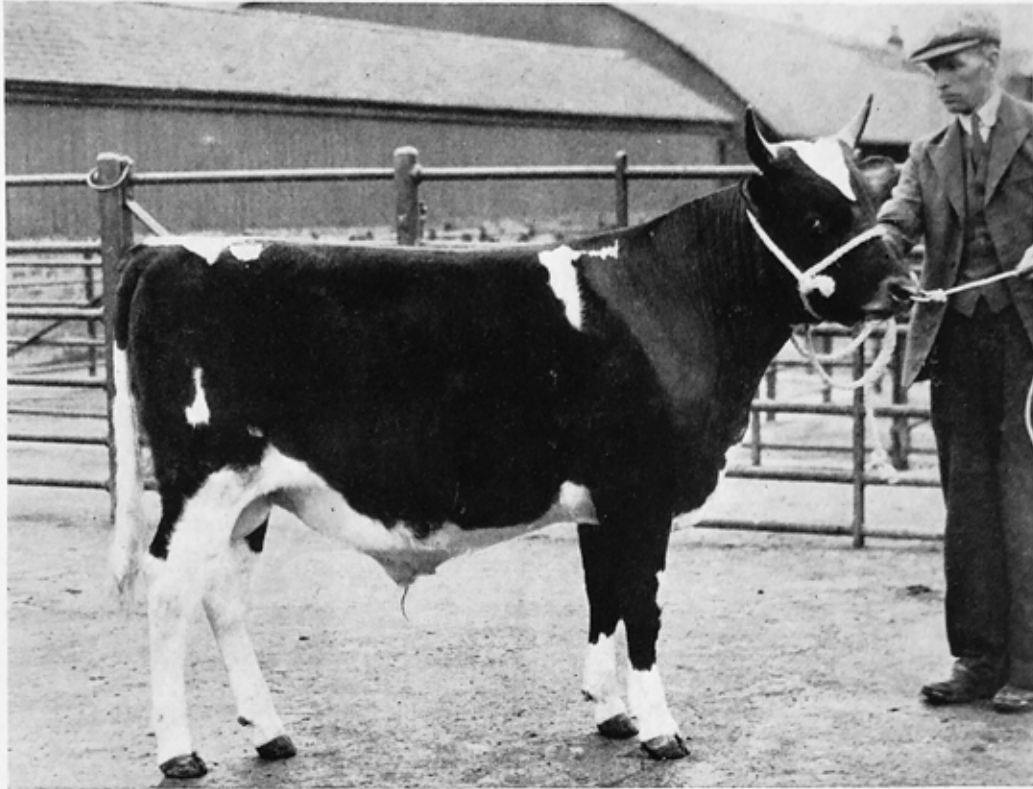
*Rich Pastures and Healthy Stocks  
Ensure the High Standard  
of our  
Milk Supply.*

MARCH, 1949

<b>Sunday</b>	-	•	<b>6</b>	<b>13</b>	<b>20</b>	<b>27</b>
<b>Monday</b>	-	•	<b>7</b>	<b>14</b>	<b>21</b>	<b>28</b>
<b>Tuesday</b>	-	1	<b>8</b>	<b>15</b>	<b>22</b>	<b>29</b>
<b>Wednesday</b>	2	<b>9</b>	<b>16</b>	<b>23</b>	<b>30</b>	
<b>Thursday</b>	-	3	<b>10</b>	<b>17</b>	<b>24</b>	<b>31</b>
<b>Friday</b>	-	4	<b>11</b>	<b>18</b>	<b>25</b>	•
<b>Saturday</b>	-	5	<b>12</b>	<b>19</b>	<b>26</b>	•

# *Ayr and Lanark Autumn Sales*

## *Leading Yearling Bulls*



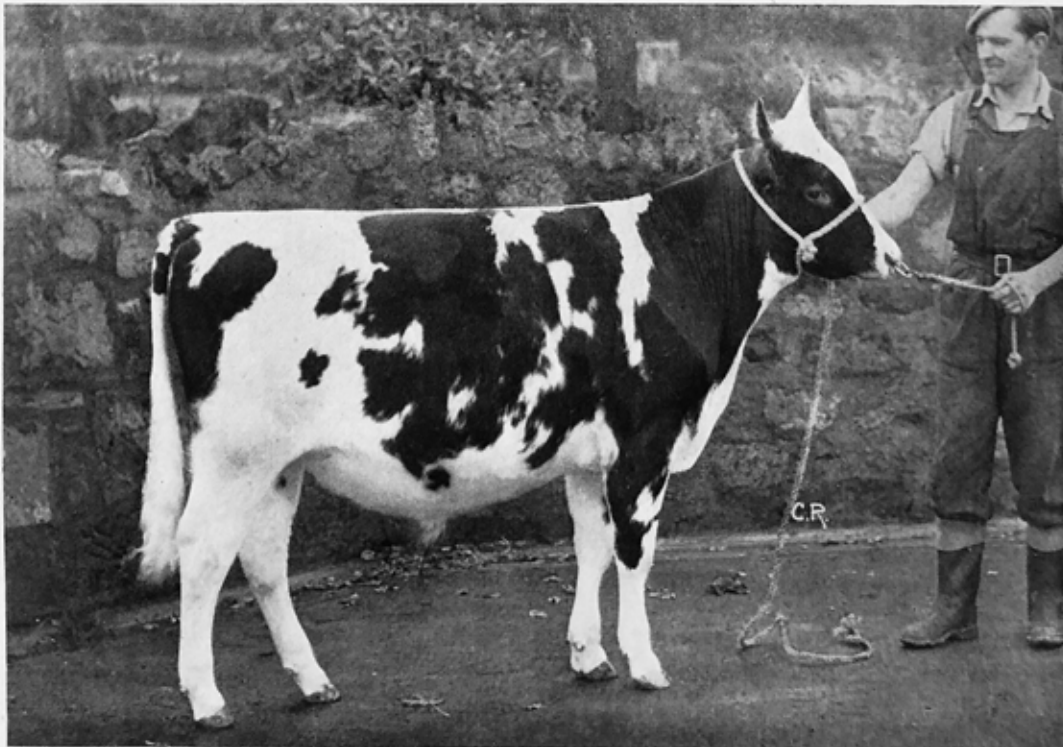
### **BANKEND "LIEUTENANT" (Vol. 72)**

Sire—Bankend "Brown King" (69139); Dam—Bankend "Lady Flora" (93263).

**FIRST PRIZE Senior Bull and MALE CHAMPION at AYR, November, 1948.**

Purchased by Miss Allan, Davenham Hall, Northwich, Cheshire.

**The BANKEND HERD consigned the FIRST PRIZE Senior Bull at this sale in 1946 and SECOND PRIZE Junior Bull and RESERVE CHAMPION in 1947.**



### **CHANGUE "LOCHIVAR" (Vol. 72)**

Sire—Bankend "Kitchener" (69145); Dam—Changue "Mayflower" (85223).

**FIRST PRIZE Junior Bull at Lanark, November, 1948.**

Purchased by Mr. Robert Lohar, Greenlees, Cambuslang.

**The CHANGUE HERD also consigned the FIRST PRIZE Junior Bull at this sale in 1946 and 1947.**



EARLY SPRING NEAR NEW CUMNOCK.

*Knows he who tills this lonely field,  
To reap its scanty corn,  
What mystic fruit his acres yield  
At midnight and at morn.*  
—EMERSON.

Stevenson's  
Dairy Farms  
Cumnock

Telephone: 3255.6

In 1948  
Stock from Changue and Bankend  
Won Leading Honours  
at  
Shows and Sales.

APRIL, 1949

<b>Sunday</b>	-	•	<b>3</b>	<b>10</b>	<b>17</b>	<b>24</b>
<b>Monday</b>	-	•	<b>4</b>	<b>11</b>	<b>18</b>	<b>25</b>
<b>Tuesday</b>	-	•	<b>5</b>	<b>12</b>	<b>19</b>	<b>26</b>
<b>Wednesday</b>		•	<b>6</b>	<b>13</b>	<b>20</b>	<b>27</b>
<b>Thursday</b>	-	•	<b>7</b>	<b>14</b>	<b>21</b>	<b>28</b>
<b>Friday</b>	-	•	<b>1</b>	<b>8</b>	<b>15</b>	<b>22</b>
<b>Saturday</b>	-	•	<b>2</b>	<b>9</b>	<b>16</b>	<b>23</b>



SHEPHERD'S COTTAGE, GLENAFTON.

*Mine be a cot beside the hill :  
 A bee-hive's hum shall soothe my ear :  
 A willow brook, that turns a mill,  
 With many a fall shall linger near.*  
 —SAMUEL ROGERS.

Stevenson's

Dairy Farms

Cumnock

Telephone: 3255-6

*Our Premises are Equipped with the  
 Necessary Plant and Appliances  
 for the  
 Production of Milk  
 of the  
 Highest Quality*

MAY, 1949

<b>Sunday</b>	-	-	1	8	15	22	29
<b>Monday</b>	-	-	2	9	16	23	30
<b>Tuesday</b>	-	-	3	10	17	24	31
<b>Wednesday</b>	-	-	4	11	18	25	.
<b>Thursday</b>	-	-	5	12	19	26	.
<b>Friday</b>	-	-	6	13	20	27	.
<b>Saturday</b>	-	-	7	14	21	28	.



THE MILL DAM, OCHILTREE.

*And what is so rare as a day in June:  
Then, if ever, come perfect days.*  
—J. B. LOWELL.

Stevenson's

Dairy Farms

Cumnock

Telephone: 3255-6

Our Working Dairy at Changue  
May Be Visited by Customers  
At Any Time.

JUNE, 1949

<b>Sunday</b>	-	•	<b>5</b>	<b>12</b>	<b>19</b>	<b>26</b>
<b>Monday</b>	-	•	<b>6</b>	<b>13</b>	<b>20</b>	<b>27</b>
<b>Tuesday</b>	-	•	<b>7</b>	<b>14</b>	<b>21</b>	<b>28</b>
<b>Wednesday</b>	<b>1</b>		<b>8</b>	<b>15</b>	<b>22</b>	<b>29</b>
<b>Thursday</b>	-	<b>2</b>	<b>9</b>	<b>16</b>	<b>23</b>	<b>30</b>
<b>Friday</b>	-	<b>3</b>	<b>10</b>	<b>17</b>	<b>24</b>	<b>•</b>
<b>Saturday</b>	-	<b>4</b>	<b>11</b>	<b>18</b>	<b>25</b>	<b>•</b>

Dear Customer,

We have the pleasure to send you a copy of our 1949 Calendar. Once again the main feature is a selection of pictures from the districts in which we serve.

Some 400 new customers will be receiving their first S.D.F. calendar. This increase in our number is largely the result of an extension to our service in the Coylton area, where Messrs. Hodge and Lang's dairy business was acquired last summer. We take this opportunity to express our thanks to those customers for their co-operation during the change-over.

It is difficult to realise that in the course of business each morning we call on some 4,500 homes. Our rounds vans cover approximately 500 miles daily delivering something like 10,000 pints of milk. This goes on with clockwork regularity, and here we would record our appreciation of the work of a loyal and willing staff doing their best on our behalf to meet your requirements.

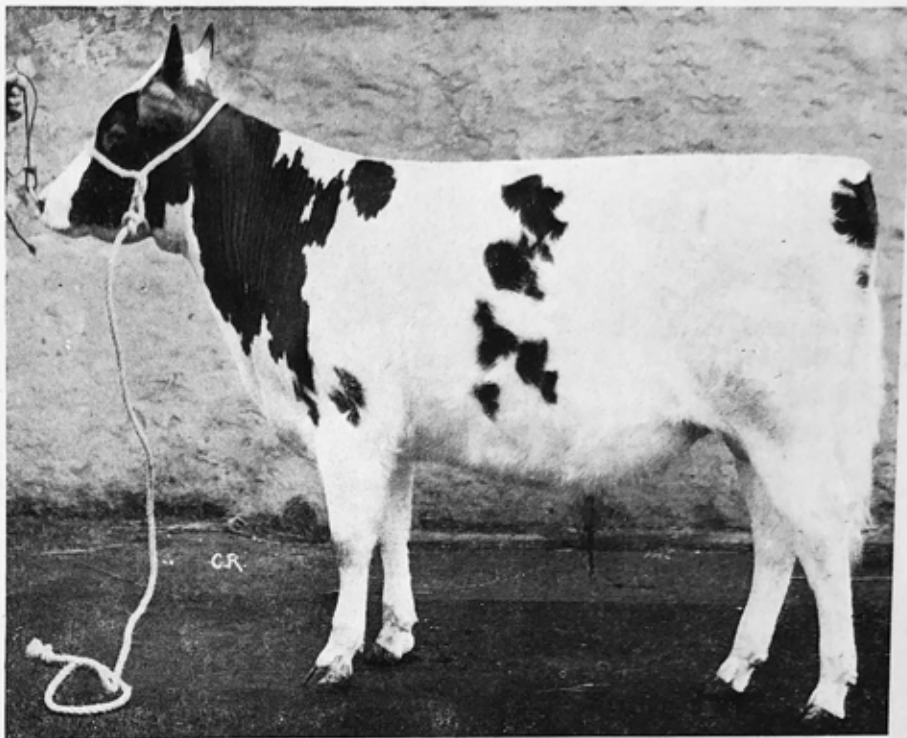
Many customers will remember the "At Home" at Changue in August, 1939. It is our intention to revive this, and once again give customers an opportunity to see over our premises and plant. Notice of the date will be given in the Press.

We like to think of our calendar each Christmas as a message from our home to your home—a message of goodwill, and at the same time an expression of appreciation of your continued custom.

Wishing all a Bright and Happy New Year.

J. J. & W. STEVENSON.

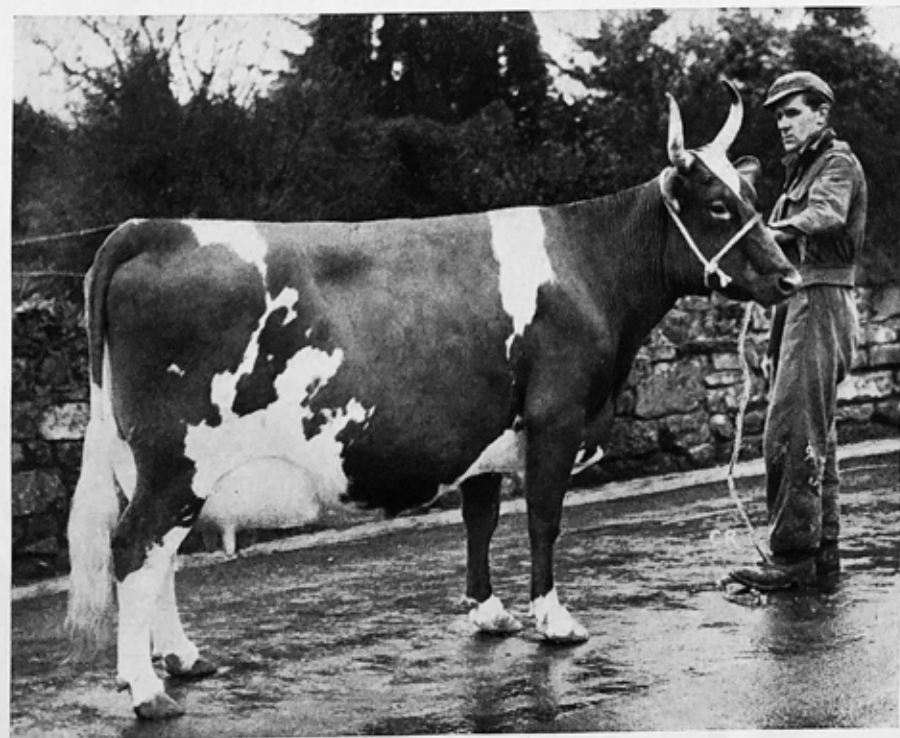
WINNERS AT AYR SHOW  
 (APRIL 28-29, 1948)



**CHANGUE "LEADING LIGHT" (Vol. 72)**

Sire—Low Milton "Wanderer" (55348); Dam—Changue "Mattie" (85499).  
 Purchased by Mr. David Murdoch, Treesmax, Dronagan, at Lanark Spring Show and Sale February, 1948, for 450 gns. (Top priced bull).

**FIRST PRIZE Junior Bull at AYR SHOW, April, 1948.**



**CHANGUE "CHOICE 5th" (36158)**

Sire—Logan Mains "Unanimity" (41624);  
 Dam—Changue "Choice 4th" (73984).

**Milk Record: "Choice 5th"**

6820 lbs at 4.55% b.f. in 248 days as a heifer  
 8740 lbs at 4.82% b.f. in 257 days  
 9650 lbs at 4.41% b.f. in 275 days  
 9650 lbs at 4.45% b.f. in 289 days  
 10570 lbs at 4.52% b.f. in 299 days  
 9388 lbs at 4.57% b.f. in 213 days still milking.

**Milk Record of Dam: "Choice 4th"**

8660 lbs at 4.09% b.f. in 309 days as a heifer  
 9370 lbs at 4.60% b.f. in 294 days  
 9730 lbs at 4.48% b.f. in 287 days  
 10200 lbs at 4.71% b.f. in 294 days  
 10670 lbs at 4.63% b.f. in 308 days  
 10670 lbs at 4.84% b.f. in 361 days

**FIRST PRIZE Cow-in-milk at CATRINE SHOW, May, 1947.**

**FIRST PRIZE Aged Cow, and WINNER of VETERAN'S TROPHY, AYR SHOW, April, 1948.**  
 Dam of CHANGUE "LIBERATOR" one of our herd sires.





STAIR INN, COYLTON.

*The righteous minds of innkeepers,  
Induce them now and then  
To crack a bottle with a friend  
Or treat unmoneyed men.*  
—G. K. CHESTERTON.

Stevenson's  
Dairy Farms  
Cumnock

Telephone: 3255-6

*We are Constantly Improving  
our  
Production and Processing Methods  
to  
Achieve a Better Service.*

<i>JULY, 1949</i>								
<b>Sunday</b>	-	•	<b>3</b>	<b>10</b>	<b>17</b>	<b>24</b>	<b>31</b>	
<b>Monday</b>	-	•	<b>4</b>	<b>11</b>	<b>18</b>	<b>25</b>	•	
<b>Tuesday</b>	-	•	<b>5</b>	<b>12</b>	<b>19</b>	<b>26</b>	•	
<b>Wednesday</b>	•	<b>6</b>	<b>13</b>	<b>20</b>	<b>27</b>	•	•	
<b>Thursday</b>	-	•	<b>7</b>	<b>14</b>	<b>21</b>	<b>28</b>	•	
<b>Friday</b>	-	•	<b>1</b>	<b>8</b>	<b>15</b>	<b>22</b>	<b>29</b>	•
<b>Saturday</b>	-	<b>2</b>	<b>9</b>	<b>16</b>	<b>23</b>	<b>30</b>	•	



AN AYRSHIRE LASS.  
Give us each day our daily bread.

Stevenson's

Dairy Farms

Cumnock

Telephone: 3255-6

*Tuberculin Tested Milk  
is  
Nature's Best Food  
in its  
Most Health-giving Form.*

AUGUST, 1949

<b>Sunday</b>	-	•	<b>7</b>	<b>14</b>	<b>21</b>	<b>28</b>
<b>Monday</b>	-	<b>1</b>	<b>8</b>	<b>15</b>	<b>22</b>	<b>29</b>
<b>Tuesday</b>	-	<b>2</b>	<b>9</b>	<b>16</b>	<b>23</b>	<b>30</b>
<b>Wednesday</b>	<b>3</b>	<b>10</b>	<b>17</b>	<b>24</b>	<b>31</b>	
<b>Thursday</b>	-	<b>4</b>	<b>11</b>	<b>18</b>	<b>25</b>	•
<b>Friday</b>	-	<b>5</b>	<b>12</b>	<b>19</b>	<b>26</b>	•
<b>Saturday</b>	-	<b>6</b>	<b>13</b>	<b>20</b>	<b>27</b>	•



SHANKSTON COTTAGE, CUMNOCK.

*O, to have a little house!  
To own the hearth and stool and all!  
The heaped-up sods upon the fire,  
The pile of turf against the wall.*  
—PADRAIC COLUM.

*Stevenson's*  
Dairy Farms  
*Cumnock*

Telephone: 3255.6

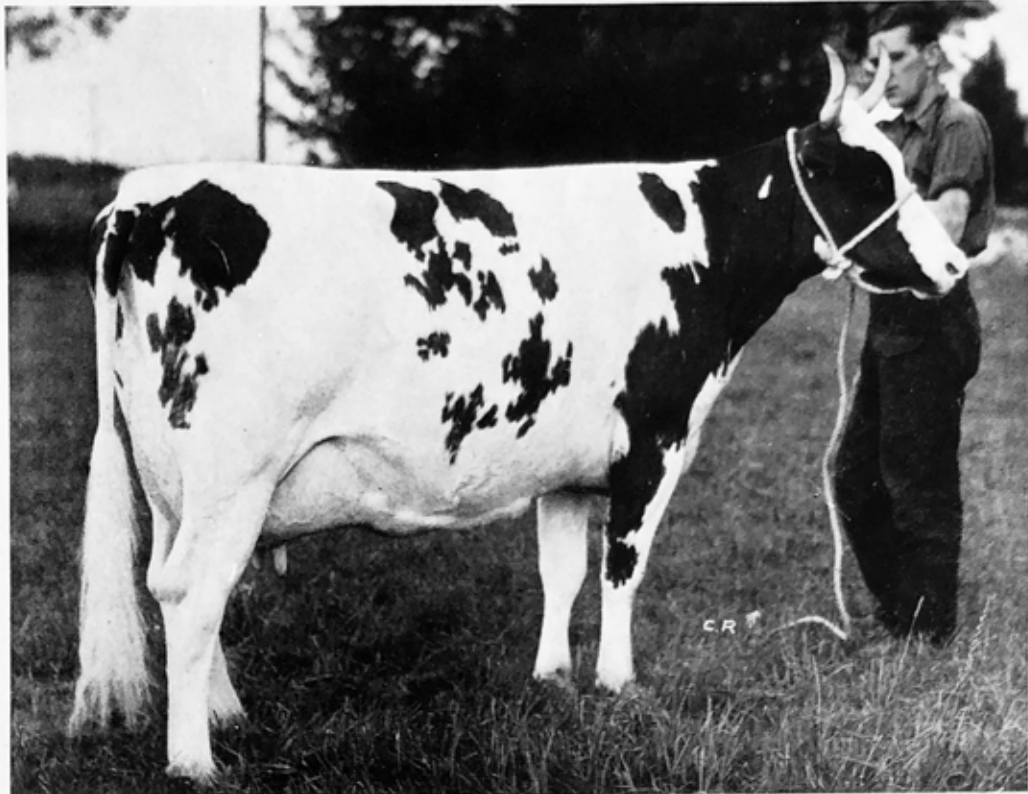
*Our Pedigree Attested Ayrshire Herd  
Is One of the Oldest  
in the  
Country.*

*(Established at Changue, 1867).*

*SEPTEMBER, 1949*

<b>Sunday</b>	-	.	4	11	18	25
<b>Monday</b>	-	.	5	12	19	26
<b>Tuesday</b>	-	.	6	13	20	27
<b>Wednesday</b>	.		7	14	21	28
<b>Thursday</b>	-	1	8	15	22	29
<b>Friday</b>	-	2	9	16	23	30
<b>Saturday</b>	-	3	10	17	24	.

# Mother and Son



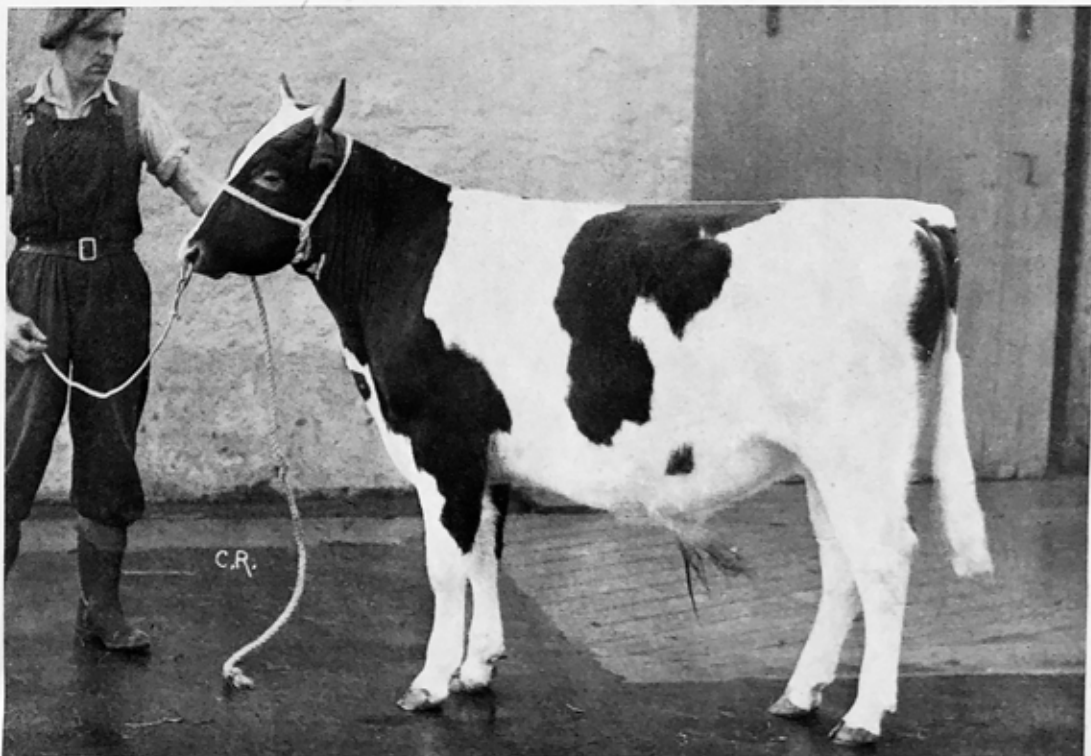
## CHANGUE "CHOICE 7th" (63618).

Sire—Lessnessock "San Mario" (45248), Dam—Changue "Choice 4th" (73984).

Milk Record: "Choice 7th."  
8680 lbs at 4.22% b.f. in 322 days  
as a heifer  
10485 lbs at 4.74% b.f. in 315 days  
11251 lbs at 4.47% b.f. in 300 days

Milk Record of Dam: "Choice 4th"  
8660 lbs at 4.09% b.f. in 309 days  
as a heifer  
9370 lbs at 4.60% b.f. in 294 days  
9730 lbs at 4.48% b.f. in 287 days  
10200 lbs at 4.71% b.f. in 294 days  
10670 lbs at 4.63% b.f. in 308 days  
10670 lbs at 4.84% b.f. in 361 days

"Choice 7th" was **SECOND** in the **INSPECTION CLASS** for Senior Cows and gained a **CERTIFICATE OF MERIT** in the Milking Trials at the **SCOTTISH DAIRY SHOW, November 16—20, 1948.**

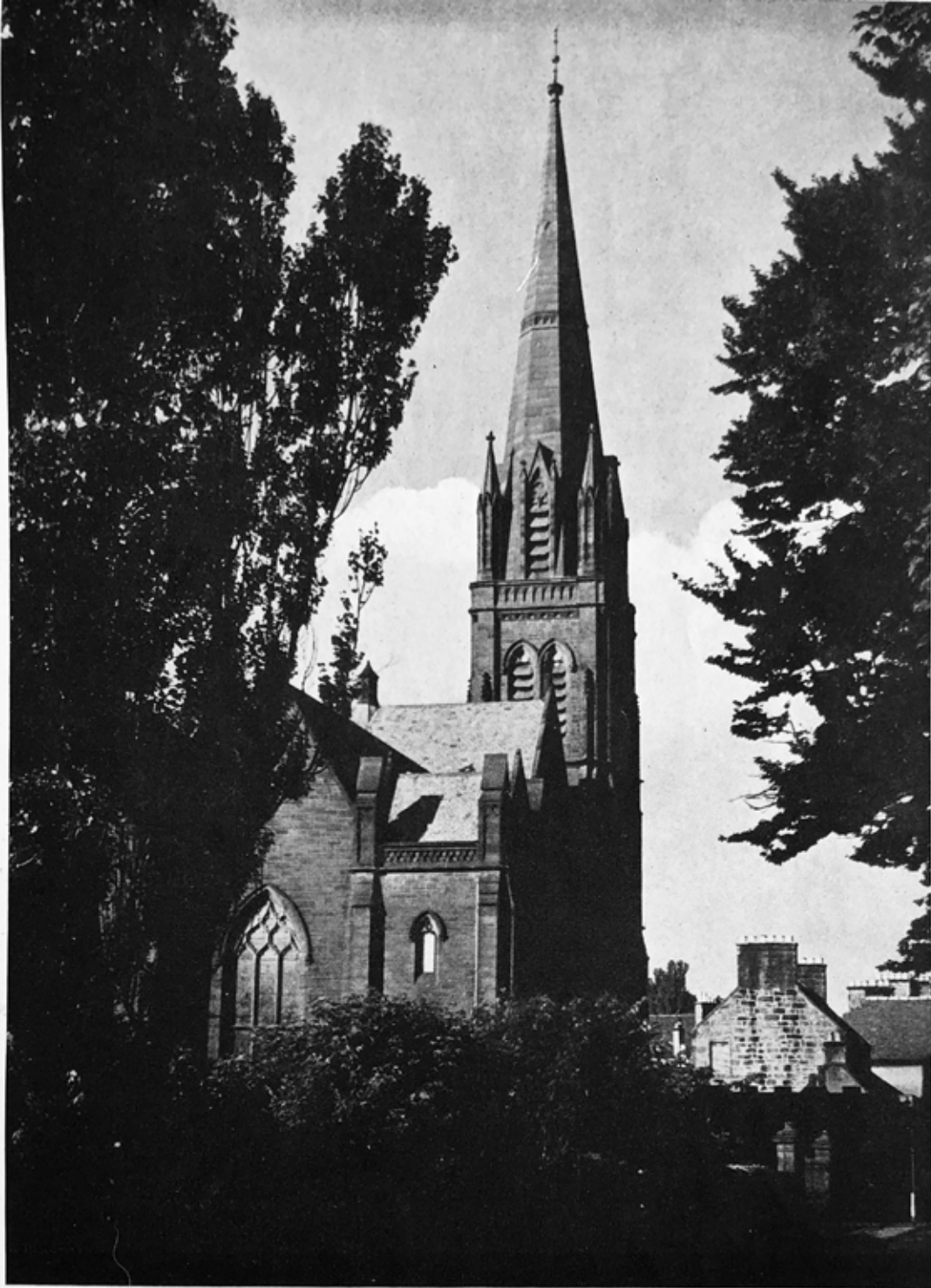


## CHANGUE "LIMOUSINE" (VOL. 72)

Sire—Birnieknowe "Templar" (66411), Dam—Changue "Choice 7th" (63618).

**SECOND PRIZE Junior Bull and RESERVE MALE CHAMPION, MAYBOLE SHOW, October, 1948.**

Purchased by Mr. David Paterson, Lagg, at Ayr Show and Sale in November, 1948, for 1000 gns., the figure paid for his sire at the same sale in 1946.



CRICHTON MEMORIAL,  
CUMNOCK.  
*Tapering spires whose silent fingers  
point to heaven.*  
—COLERIDGE.

Stevenson's  
Dairy Farms  
Cumnock

Telephone: 3255.6

When in Cumnock  
"MEAT" at Stevenson's.

Morning Coffee,  
Lunch,  
Afternoon Tea.

OCTOBER, 1949

<b>Sunday</b>	-	•	<b>2</b>	<b>9</b>	<b>16</b>	<b>23</b>	<b>30</b>
<b>Monday</b>	-	•	<b>3</b>	<b>10</b>	<b>17</b>	<b>24</b>	<b>31</b>
<b>Tuesday</b>	-	•	<b>4</b>	<b>11</b>	<b>18</b>	<b>25</b>	•
<b>Wednesday</b>	•		<b>5</b>	<b>12</b>	<b>19</b>	<b>26</b>	•
<b>Thursday</b>	-	•	<b>6</b>	<b>13</b>	<b>20</b>	<b>27</b>	•
<b>Friday</b>	-	•	<b>7</b>	<b>14</b>	<b>21</b>	<b>28</b>	•
<b>Saturday</b>	-	1	<b>8</b>	<b>15</b>	<b>22</b>	<b>29</b>	•



MILL STREAM, OCHILTREE.

*More water glideth by the mill.  
Than wots the miller of.*  
—SHAKESPEARE.

*Stevenson's*  
Dairy Farms  
*Cumnock*

Telephone: 3255.6

*We Offer You the Benefits  
of  
Specialised Knowledge in the Dairy  
Trade  
Plus  
A Modern and Efficient Service.*

*NOVEMBER, 1949*

<b>Sunday</b>	-	•	<b>6</b>	<b>13</b>	<b>20</b>	<b>27</b>
<b>Monday</b>	-	•	<b>7</b>	<b>14</b>	<b>21</b>	<b>28</b>
<b>Tuesday</b>	-	<b>1</b>	<b>8</b>	<b>15</b>	<b>22</b>	<b>29</b>
<b>Wednesday</b>	<b>2</b>	<b>9</b>	<b>16</b>	<b>23</b>	<b>30</b>	
<b>Thursday</b>	-	<b>3</b>	<b>10</b>	<b>17</b>	<b>24</b>	<b>•</b>
<b>Friday</b>	-	<b>4</b>	<b>11</b>	<b>18</b>	<b>25</b>	<b>•</b>
<b>Saturday</b>	-	<b>5</b>	<b>12</b>	<b>19</b>	<b>26</b>	<b>•</b>



DECEMBER MORNING, STAIR BRIDGE.

*When daisies go, shall winter time  
 Silver the simple grass with rime,  
 Autumnal frosts enchant the pool  
 And make the cart-ruts beautiful.*  
 —R. L. STEVENSON.

Stevenson's  
 Dairy Farms  
 Cumnock

Telephone: 3255.6

*Our Milk is Delivered  
 to  
 Customers  
 Within a Few Hours  
 of  
 Production.*

DECEMBER, 1949

<b>Sunday</b>	-	•	<b>4</b>	<b>11</b>	<b>18</b>	<b>25</b>
<b>Monday</b>	-	•	<b>5</b>	<b>12</b>	<b>19</b>	<b>26</b>
<b>Tuesday</b>	-	•	<b>6</b>	<b>13</b>	<b>20</b>	<b>27</b>
<b>Wednesday</b>	•		<b>7</b>	<b>14</b>	<b>21</b>	<b>28</b>
<b>Thursday</b>	-	<b>1</b>	<b>8</b>	<b>15</b>	<b>22</b>	<b>29</b>
<b>Friday</b>	-	<b>2</b>	<b>9</b>	<b>16</b>	<b>23</b>	<b>30</b>
<b>Saturday</b>	-	<b>3</b>	<b>10</b>	<b>17</b>	<b>24</b>	<b>31</b>

# STEVENSONS' DAIRY FARMS

(J., J., & W. STEVENSON)

OFFICE, RESTAURANT, SHOP & BAKERY: 44-45 THE SQUARE,

## CUMNOCK

Producers and Distributors of Good Milk, Bakers, Caterers and Restaurateurs

TELEPHONE 3255-6

JANUARY, 1949						
Sunday	-	2	9	16	23	30
Monday	-	3	10	17	24	31
Tuesday	-	4	11	18	25	.
Wednesday	-	5	12	19	26	.
Thursday	-	6	13	20	27	.
Friday	-	7	14	21	28	.
Saturday	-	1	8	15	22	29

MAY, 1949						
Sunday	-	1	8	15	22	29
Monday	-	2	9	16	23	30
Tuesday	-	3	10	17	24	31
Wednesday	-	4	11	18	25	.
Thursday	-	5	12	19	26	.
Friday	-	6	13	20	27	.
Saturday	-	7	14	21	28	.

SEPTEMBER, 1949						
Sunday	-	4	11	18	25	.
Monday	-	5	12	19	26	.
Tuesday	-	6	13	20	27	.
Wednesday	-	7	14	21	28	.
Thursday	-	1	8	15	22	29
Friday	-	2	9	16	23	30
Saturday	-	3	10	17	24	.

FEBRUARY, 1949						
Sunday	-	6	13	20	27	.
Monday	-	7	14	21	28	.
Tuesday	-	1	8	15	22	.
Wednesday	-	2	9	16	23	.
Thursday	-	3	10	17	24	.
Friday	-	4	11	18	25	.
Saturday	-	5	12	19	26	.

JUNE, 1949						
Sunday	-	5	12	19	26	.
Monday	-	6	13	20	27	.
Tuesday	-	7	14	21	28	.
Wednesday	-	1	8	15	22	29
Thursday	-	2	9	16	23	30
Friday	-	3	10	17	24	.
Saturday	-	4	11	18	25	.

OCTOBER, 1949						
Sunday	-	2	9	16	23	30
Monday	-	3	10	17	24	31
Tuesday	-	4	11	18	25	.
Wednesday	-	5	12	19	26	.
Thursday	-	6	13	20	27	.
Friday	-	7	14	21	28	.
Saturday	-	1	8	15	22	29

MARCH, 1949						
Sunday	-	6	13	20	27	.
Monday	-	7	14	21	28	.
Tuesday	-	1	8	15	22	29
Wednesday	-	2	9	16	23	30
Thursday	-	3	10	17	24	31
Friday	-	4	11	18	25	.
Saturday	-	5	12	19	26	.

JULY, 1949						
Sunday	-	3	10	17	24	31
Monday	-	4	11	18	25	.
Tuesday	-	5	12	19	26	.
Wednesday	-	6	13	20	27	.
Thursday	-	7	14	21	28	.
Friday	-	1	8	15	22	29
Saturday	-	2	9	16	23	30

NOVEMBER, 1949						
Sunday	-	6	13	20	27	.
Monday	-	7	14	21	28	.
Tuesday	-	1	8	15	22	29
Wednesday	-	2	9	16	23	30
Thursday	-	3	10	17	24	.
Friday	-	4	11	18	25	.
Saturday	-	5	12	19	26	.

APRIL, 1949						
Sunday	-	3	10	17	24	.
Monday	-	4	11	18	25	.
Tuesday	-	5	12	19	26	.
Wednesday	-	6	13	20	27	.
Thursday	-	7	14	21	28	.
Friday	-	1	8	15	22	29
Saturday	-	2	9	16	23	30

AUGUST, 1949						
Sunday	-	7	14	21	28	.
Monday	-	1	8	15	22	29
Tuesday	-	2	9	16	23	30
Wednesday	-	3	10	17	24	31
Thursday	-	4	11	18	25	.
Friday	-	5	12	19	26	.
Saturday	-	6	13	20	27	.

DECEMBER, 1949						
Sunday	-	4	11	18	25	.
Monday	-	5	12	19	26	.
Tuesday	-	6	13	20	27	.
Wednesday	-	7	14	21	28	.
Thursday	-	1	8	15	22	29
Friday	-	2	9	16	23	30
Saturday	-	3	10	17	24	31

This calendar is specially compiled and produced by  
Stevensons' Dairy Farms. Copyright of all pictures reserved.

From quiet homes and first beginnings,  
Out to the undiscovered ends,  
There's nothing worth the wear of winning  
But laughter and the love of friends.  
—BELLOC.